

El Paso Community College District 2022 Redistricting

Drawing Committee Presentation

BICKERSTAFF HEATH DELGADO ACOSTA LLP

**3711 S. MoPac Expressway
Building One, Suite 300
Austin, Texas 78746
(512) 472-8021**

www.bickerstaff.com

©2021
 **Bickerstaff**
Heath Delgado Acosta LLP

REDISTRICTING

Applicable Law

Three Principles, plus

**“One person – one vote”
(equal population)**

**Voting Rights Act § 2
(nondiscrimination)**

***Shaw v. Reno*
(limits use of race)**

Redistricting

One Person - One Vote

- U.S. Constitution – single-member districts must have *approximately equal populations*
- Rule of thumb: **total deviation < 10%**
 - Compare most populous and least populous districts to “ideal”-sized district
 - Add both departures from ideal together

Example Deviation Calculation

<u>District</u>	<u>Ideal district</u>	<u>District total pop.</u>	<u>Difference</u>	<u>Deviation</u>
A	10,000	11,000	1000	+ 10.0 percent
B	10,000	10,750	750	+ 7.5 percent
C	10,000	10,250	250	+ 2.5 percent
D	10,000	8,000	- 2000	- 20.0 percent
<hr/>				
Totals:	40,000	40,000	net= 0	net= 0 percent

Total maximum deviation = difference between most populous and least populous districts = 10 percent + 20 percent = 30 percent.

What Population Do You Use?

Total Population

- To determine one person - one vote

VAP

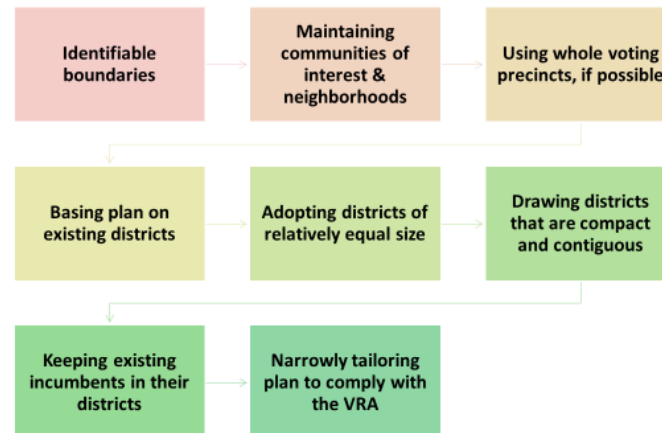
(Voting Age Population)

- To measure voting rights issues

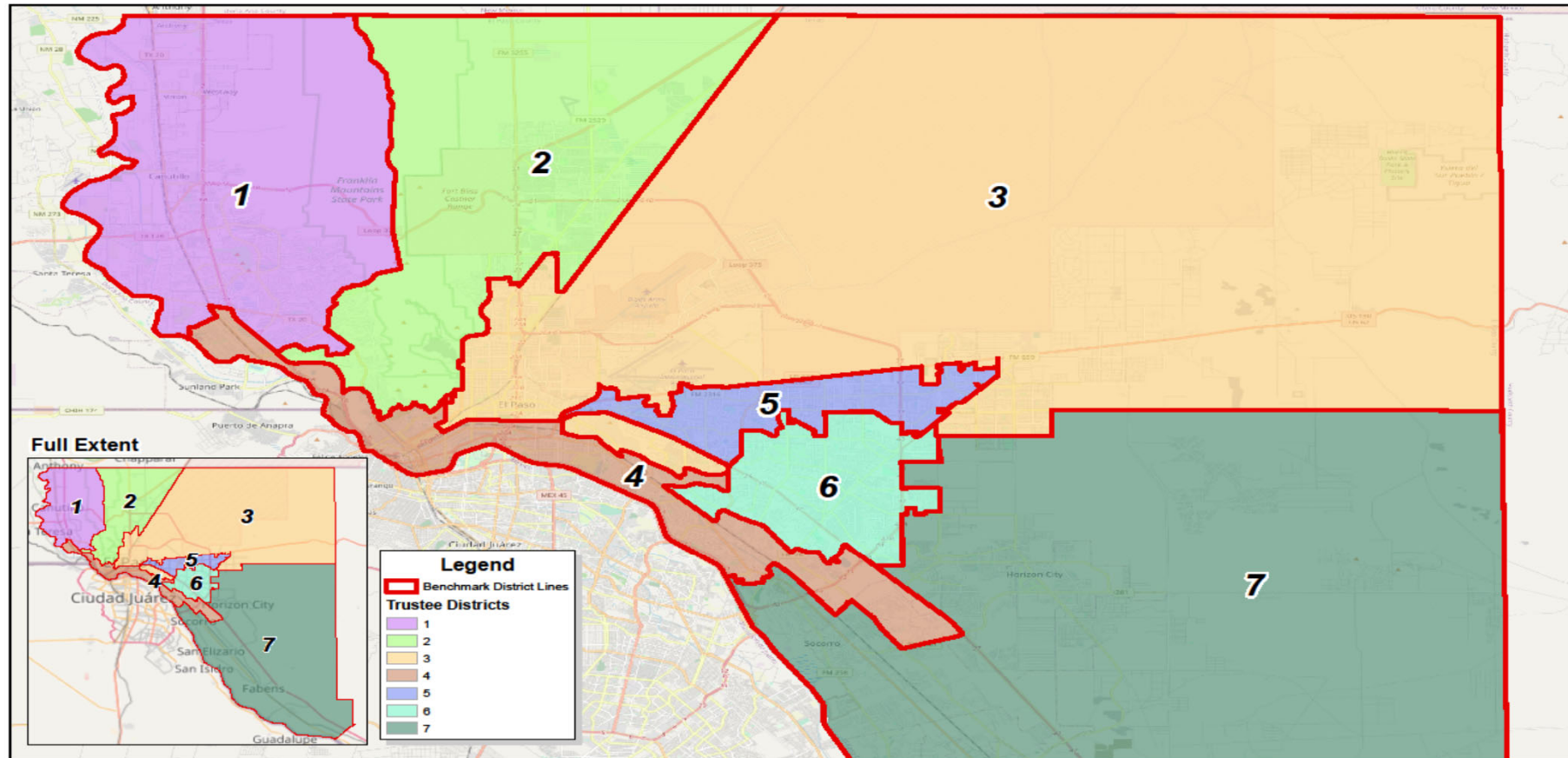
Section 2 of the Voting Rights Act

- No discrimination on basis of race or language minority status
- Generally, avoid *cracking or packing*
- *Cracking or fracturing* is dividing minority voters to fragment their voting power.
- *Packing* is concentrating minority voters when dividing them would permit the group to elect their candidates of choice in more than one district
- Other practices can also violate Section 2

Adopt Criteria



Current Trustee Districts



El Paso Community College Trustee Districts - Initial Assessment

© 2022 Bickerstaff Heath Delgado Acosta LLP
Data Source: Roads, Water and other
features obtained from the 2020
Tiger/line files, U.S. Census Bureau



**El Paso Community College District
Overall Deviation For Current Trustee Districts
Using 2020 Census Data**

El Paso Community College: Trustee Districts - Initial Assessment



Demographics Report - Summary 2020 Census Total Population

District	Persons	Ideal Size	Deviation	Hispanic % of Total Population	Non-Hispanic White % of Total Population	Non-Hispanic Black % of Total Population	Non-Hispanic Asian % of Total Population	Non-Hispanic Other % of Total Population
1	122,991	123,665	-0.55%	74.69%	19.09%	1.90%	2.26%	2.05%
2	126,097	123,665	1.97%	69.98%	18.32%	6.16%	2.12%	3.42%
3	144,385	123,665	16.75%	77.19%	13.81%	4.36%	1.57%	3.07%
4	104,163	123,665	-15.77%	91.67%	5.80%	1.03%	0.53%	0.97%
5	110,695	123,665	-10.49%	84.70%	9.93%	2.83%	0.91%	1.62%
6	112,993	123,665	-8.63%	88.11%	7.72%	2.09%	0.90%	1.19%
7	144,333	123,665	16.71%	93.53%	4.12%	1.00%	0.28%	1.08%
TOTAL:				82.64%	11.35%	2.82%	1.24%	1.96%

Ideal Size: $865,657 / 7 = 123,665$

Total Population: 865,657

Overall Deviation: 32.52%

Some percentages may be subject to rounding errors.

**El Paso Community College District
Overall Deviation For Current Trustee Districts
Using 2020 Census Data**

El Paso Community College: Trustee Districts - Initial Assessment



Demographics Report - Summary 2020 Census Voting Age Population

District	Total VAP*		Hispanic % of Total VAP	Non-Hispanic Anglo % of Total VAP	Non-Hispanic Black % of Total VAP	Non-Hispanic Asian % of Total VAP	Non-Hispanic Other % of Total VAP
1	93,315		72.64%	21.13%	1.95%	2.36%	1.91%
2	95,048		66.94%	20.90%	6.50%	2.43%	3.22%
3	106,042		76.59%	14.58%	4.37%	1.82%	2.64%
4	81,124		91.08%	6.34%	1.13%	0.59%	0.86%
5	83,279		83.27%	11.15%	3.01%	1.02%	1.55%
6	85,938		87.17%	8.59%	2.17%	0.98%	1.08%
7	100,216		93.15%	4.48%	1.06%	0.31%	1.00%
	644,962		81.27%	12.61%	2.94%	1.38%	1.79%

* VAP - Voting Age Population

Some percentages may be subject to rounding errors.