

Digital Seniors.
Learn to master your tablets and smartphones.
/ Page 30

Motorcycle Repair.
Service and maintain shocks, clutches, tires, ignition systems.
/ Page 39

CSI for Children.
Solve mysteries by hidden clues and hard evidence.
/ Page 26

Blueprint Reading. How to read building and construction plans.
/ Page 41

Texas Peace Officer. Due process, criminal justice, history of policing.
/ Page 17

Chair Pilates. Chair-based, low impact, safe fitness with an energy boost.
/ Page 14

3D Printing. The printing process, its potential and pitfalls.
/ Page 22

Auto Body Work. Hand & power tools, techniques, shop safety.
/ Page 40

Fast-Track English. Quick paced, independent study.
/ Page 37

Senior Tai Chi. Calm, slow movements and controlled breathing.
/ Page 32

Coding for Kids. Tech language & visual-based apps.
/ Page 29

Speak in Spanish. For seniors brand new to the language.
/ Page 32

SummerCE Classes 2025



**El Paso Community College Summer 2025
Workforce and Continuing Education Classes**
Register online for classes starting May 5 at
epcc.edu/academics/continuingeducation

EPCC Workforce and Continuing Education Schedule Summer 2025

The El Paso County Community College District Board of Trustees



Dr William Serrata
College President



Mr Brian Haggerty
Chair of the Board, District 2



Dr Carmen Olivas Graham
Vice Chair of the Board, Dist 5



Ms Bonnie Soria Najera
Board Secretary, District 7



Mr John E Uxer, Jr
Trustee, District 1



Mrs Belen Robles
Trustee, District 3



Mr Jesus Mendez
Trustee, District 4



Vacant
Trustee, District 6

Contents

04 / Business, Computers, Technical Education

Computer Business Applications
Computer Skills
Cisco Academy
Business Management / Technical Education
Real Estate
Professional Floral Design Certificate
Online Courses
New Career Training Programs Online

09 / Health and Fitness

CPR and First Aid
Ekg Technician
Emergency Medical Services
Emergency Medical Technician
General Health Courses
Health Ed2Go Courses
Medication Aide
Nursing Refresher
Nursing Assistant
Pharmacy Technician
Phlebotomy Technician
Journey to Wellness
Wellness Ed2Go Courses
Fitness
Massage Therapy
Continuing Education for Massage Therapists
Cosmetology Instructor Certificate
Nail Technician

17 / Law Enforcement

18 / Civilian Firearms Courses

19 / Motorcycle Rider Courses

20 / Personal Enrichment

Home and Garden
Creative Arts
Music
Culinary Arts
Online Courses
Exam Preparation
Personal Development
Young Adult Courses

26 / Childrens College

Academic Enrichment
Black Rocket
Snapology
Arts
Sports and Fitness
Performing Arts
Young Rembrandts
Cooking
Children's and Teen ESL Program

30 / Senior Adult Program

Arts
Computers
Dance and Exercise
Languages
Music
Personal Enrichment
Wellness

36 / SBMI : Small Business Management Institute Session Descriptions

37 / Language Institute

39 / Center for Corporate and Workforce Training

Corporate and Workforce Trainings
Institute for Customer Service Excellence : Southwest Region
Automotive Technology
Auto Collision and Repair
Building Trades Academy
Electrical Technology
Construction Technology
Welding Technology
Logistics

49 / General Information

Registration and Payment
Refunds
Parking on Campus
Senior Adult Program
Bacterial Meningitis Vaccine Requirement
Financial Assistance
Frequently Asked Questions
CE Transcripts and Certificates of Completion
Locations
Key to Codes
Staff
How to Register

Courses are subject to change.

Go to epcc.edu/academics/continuingeducation for up-to-date course information. Submit your CE Registration Form to our Admissions Department at admissions@epcc.edu for processing.

Business / Computers / Technical Education

Leticia Guerra, Director.

Email us at mlerma14@epcc.edu or call us at 915 **831-6682**. Go to epcc.edu/academics/continuingeducation to learn about new course offerings.

You must have your login credentials on the first day of class, and you must be 17 years of age to register in these classes.

Computer Business Applications

These accelerated 4-hour courses provide refresher training for on-the-go professionals, but are not recommended for introductory training.

Introduction to Microsoft Excel. / \$ 45 / 4 hrs

Course **CAT 042**.

35820 Sat 9am to 1pm **Jun 21** Admin Svc Ctr B-485

Power Point Basics. / \$ 45 / 4 hrs

Course **CAT 018**.

35821 Sat 9am to 1pm **Jul 12** Valle Verde B-161

Foundation of Microsoft Word. / \$ 45 / 4 hrs

Course **CAT 043**.

35822 Sat 9am to 1pm **Jun 14** Admin Svc Ctr B-485



Computer Skills

Introduction to Computers. / \$ 323 / 48 hrs / 4.8 CEUs

Provides an overview of computer information systems. Introduces computer hardware, software, procedures, and human resources. Explores the integration of application usage and provides exploration on the impact within the business community and society as a whole. **No class on July 4.** Call 915 831-2056 for more information.

Course **CAT 003**. Equivalent to WECM course ITSC 1001.

Conc 35823 Mon to Thu 530 to 750pm **Jul 14 to Aug 14** Valle Verde AST-365 (Lab Mon to Thu)

Introduction to Excel. / \$ 100 / 12 hrs / 1.2 CEUs

Designed for those with little or no functional knowledge of Excel, as well as those who regularly use Excel at a basic level but wish to enhance their skills.

Course **CAT 051**. Equivalent to WECM course ITSW 1022.

35824 Mon Wed 6 to 8pm **Jun 16 to Jul 2** Admin Svc Ctr B-485

Introduction to PowerPoint. / \$ 100 / 12 hrs / 1.2 CEUs

Designed for students who wish to gain a foundational understanding of Microsoft PowerPoint that is necessary to create and develop engaging multimedia presentations. **Prerequisite:** Knowledge of Microsoft Word.

Course **CAT 052**. Equivalent to WECM course ITSW 1037.

35825 Tue Thu 6 to 8pm **Jul 8 to Jul 24** Valle Verde B-123

Introduction to Word. / \$ 100 / 12 hrs / 1.2 CEUs

Provides instruction in the various aspects of the Word processing package. Create, edit, and print documents such as letters, resumes, and reports using the popular software program. **Prerequisite:** Knowledge of Windows.

Course **CAT 053**. Equivalent to WECM course POFI 1024.

35826 Tue Thu 6 to 8pm **Jun 10 to Jun 26** Valle Verde B-123

Microsoft Office 365 Essentials. / \$ 186 / 24 hrs

Master Microsoft Office 365 easily! Gain essential skills in PowerPoint, Word, and Excel to become more marketable. No shortcuts, just a convenient way to enhance your productivity and stay up-to-date with 21st-century business needs. **Prerequisite:** Basic computer skills including typing, navigating windows, using web browsers, and downloading files from email.

Course **CAT 050**.

35827 Mon Wed 6 to 8pm **Jul 7 to Aug 13** Admin Svc Ctr B-485

Operating System Security. / \$ 431 / 64 hrs / 6.4 CEUs

Provides instruction on how to safeguard computer operating systems by demonstrating server support skills and designing and implementing a security system. Identifies security threats and monitors network security implementations. Uses industry best practices to configure operating systems to security standards. **No class on July 4.**

Course **CAT 027**. Equivalent to WECM course ITSY 2000.

Conc 35828 Tue Thu 2 to 450pm **Jun 9 to Aug 14** Valle Verde AST-347 (Lab Mon to Fri)

Beginning Web Programming. / \$ 431 / 64 hrs / 6.4 CEUs

Develop skills in web programming including mark-up and scripting languages. **Prerequisite:** CAT 003, Introduction to Computers. **No class on July 4.**

Course **CAT 022**. Equivalent to WECM course ITSE 1011.

Conc 35829 12am to 1159pm **Jun 9 to Aug 15** Online (Lab Mon to Sat)

Computer Fundamentals. / \$ 45 / 4 hrs

This introductory course provides essential skills and knowledge for navigating computers with confidence. You will learn fundamental computer skills including typing techniques to boost efficiency and productivity. In hands-on exercises you'll gain proficiency navigating file systems using Explorer, handling downloads, organizing files effectively and managing email. You will also explore safe browsing practices to navigate the web securely, and learn how to protect personal information while shopping online. By the end of the course you'll navigate the digital landscape easily and stay safe online.

Course **CAT 054.**

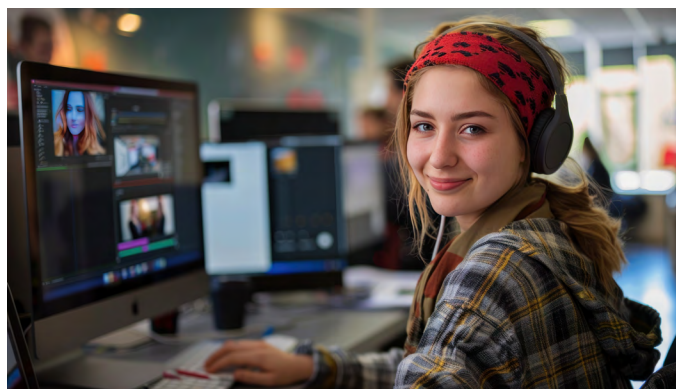
35830	Sat 830 to 1230pm	Jul 12	Admin Svc Ctr B-485
35831	Sat 830 to 1230pm	Jul 26	Admin Svc Ctr B-485

Adobe Photoshop CC. / \$ 180 / 24 hrs / 2.4 CEUs

Provides the fundamentals to master the world's leading photo retouching, color painting, and image editing program. Photoshop excels as a graphics production tool for whether you are an artist who needs to create color images, or a photographer who wants to retouch proofs, or a designer editing photo montages for print and the web. **Prerequisite:** Working knowledge of Windows.

Course **CAT 005.** Equivalent to WECM course GRPH 1051.

35832	Tue Thu	6 to 9pm	Jul 29 to Aug 21	Valle Verde B-164
-------	---------	----------	-------------------------	-------------------



Introduction to PC Operating Systems. / \$ 431

/ 64 hrs / 6.4 CEUs

Studies the introduction to personal computer operating systems including installation, configuration, file management, memory and storage management, control of peripheral devices, and use of utilities. **No class on July 4.**

Course **CAT 021.** Equivalent to WECM course ITSC 1005.

Conc 35833	Mon Wed 11 to 120pm	Jun 9 to Aug 15	Valle Verde AST-341 (Lab Mon to Fri)
------------	---------------------	------------------------	---

Cisco Academy

Students must purchase their own supplies and textbooks. Email dnajera5@epcc.edu for more information, or call **915 831-2056**.

CCNA 1: Introduction to Networks. / \$ 431

/ 64 hrs / 6.4 CEUs

Covers networking architecture, structure, and functions, and introduces the principles and structure of IP addressing and the fundamentals of Ethernet concepts, media, and operations. **Prerequisite:** CAT 003, Introduction to Computers. **No class on July 4.**

Course **CAT 007.** Equivalent to WECM course ITCC 1014.

35834	Mon Wed 530 to 650pm	Jun 9 to Aug 13	Valle Verde AST-341 (Lab Mon to Thu)
-------	----------------------	------------------------	---

CCNA 2: Switching, Routing, and Wireless Essentials.

/ \$ 431 / 64 hrs / 6.4 CEUs

Describes the architecture, components, and operations of routers and switches in small networks, and introduces (WLAN) wireless local area networks and security concepts. Provides an in-depth understanding of how routers and switches operate and are implemented in the LAN environment.

Prerequisite: CAT 007, CCNA 1: Introduction to Networks.

No class on Jul 4.

Course **CAT 008.** Equivalent to WECM course ITCC 1044.

Conc 35835	Tue Thu 530 to 820pm	Jun 9 to Aug 14	Valle Verde AST-341 (Lab Mon to Thu)
------------	----------------------	------------------------	---

CCNA 3: Enterprise Networking, Security, and

Automation. / \$ 431 / 64 hrs / 6.4 CEUs

Describes the architecture, components, operations, and security to scale for large, complex networks, including (WAN) wide area network technologies. Emphasizes network security concepts and introduces network virtualization and automation. **Prerequisite:** CAT 008, CCNA 2: Switching, Routing, and Wireless Essentials. **No class on July 4.**

Course **CAT 009.** Equivalent to WECM course ITCC 2020.

Conc 35836	Mon Wed 1 to 350pm	Jun 9 to Aug 15	Valle Verde AST-365 (Lab Mon to Fri)
------------	--------------------	------------------------	---

Business Management / Technical Education

Business Entrepreneurship. / \$ 115 / 12 hrs / 1.2 CEUs

This course provides an introduction to the principles of entrepreneurship. Topics include identifying potential business opportunities, self-growth and readiness, the role of an entrepreneurship process, an overview of ecommerce and drop ship models similar to amazon fba, an overview of how to invest stocks, and how to start your own entrepreneurship group and venture growth. Upon completion students will have real world understanding of the entrepreneurial process and issues faced by the entrepreneur.

Course **MGT 225.** Equivalent to WECM course BUSG 1008.

35837	Tue Thu	6 to 8pm	Jun 17 to Jul 3	Admin Svc Ctr B-485
-------	---------	----------	------------------------	---------------------

Introduction to Accounting I. Online with virtual lab.

/ \$ 323 / 48 hrs / 4.8 CEUs

Studies analyzing, classifying, and recording business transactions in a manual and computer environment. Emphasizes understanding the complete accounting cycle, preparing financial statements and bank reconciliations, and payroll procedures and reporting. **Prerequisite:** Knowledge of computerized skills. **No class on July 4.**

Course **MGT 809.** Equivalent to WECM course ACNT 1003.

Conc 35838	12am to 1159pm	Jun 9 to Aug 15	Online (Lab 12am to 1159pm)
------------	----------------	------------------------	----------------------------------

Court Reporter Certification Preparation.

Online with virtual lab. / \$ 368 / 48 hrs / 4.8 CEUs

Preparation for the Texas CSR and RPR examinations using mock exams. Designed to be repeated. **Prerequisite:** CRTR 2435, Accelerated Machine Shorthand. **No class on July 4.**

Course **PIE 450.** Equivalent to WECM course CRTR 2031.

Conc 35839	12am to 1159pm	Jun 9 to Aug 15	Online (Lab 12am to 1159pm)
------------	----------------	------------------------	----------------------------------

Court Reporting Briefs. Online. / \$ 125 / 16 hrs

Will provide students additional skills and knowledge to enhance speed building by learning stenography briefs. **No class on July 4.**

Course **PIE 214.**

35840	12am to 1159pm	Jun 9 to Jul 18	Online
-------	----------------	------------------------	--------

Customs Broker : License Prep Course I.

/ \$ 375 / 30 hrs / 3.0 CEUs

This course reviews selected topics included in the Custom Broker Exam, covering subjects under course objectives, and familiarizes students with custom brokerage operations.

Course **CBL 718**. Equivalent to WECM course IBUS 2003.

35841 Tue Wed Thu 6 to 8pm **Jun 10 to Jul 10** Valle Verde B-150

Customs Broker : License Prep Course II.

/ \$ 375 / 30 hrs / 3.0 CEUs

Course II complements course I by reviewing the remaining topics included in the CBP Customs Brokerage Test, familiarizing students with custom brokerage operations, to include rules of origin, valuation, trade agreements, and other topics used by Custom Brokers in daily operations.

Course **CBL 719**. Equivalent to WECM course IBUS 2003.

35842 Tue Wed Thu 6 to 8pm **Jul 15 to Aug 14** Valle Verde B-150

New / Fundamentals Payroll Certification

/ \$ 750 / 30 hrs / 3.0 CEUs

The Fundamental Payroll Certification is intended to provide authoritative information regarding the fundamental of payroll and is to be used as a training tool for entry-level Payroll Practitioners, Sales Professionals and Consultants serving the payroll industry, Systems Analysts and or Engineers who write, maintain, and update the payroll programs and Payroll Service Providers and Clients Representative. **Textbook fee is included.**

No class on July 5.

Course **MGT 872**. Equivalent to WECM course ACNT 1015.

35843 Sat 830 to 1130am **Jun 14 to Aug 23** Valle Verde B-124

New / Certified Payroll Professional Exam Prep. Course

/ \$ 850 / 35 hrs / 3.5 CEUs

Validate your knowledge and skills with the CPP Certified Payroll Professional designation -- three little letters that demonstrate you have taken the hard road to continue your education. Embrace your continued growth in payroll with a certification that not only proves your dedication to this profession but will also open many doors in your future endeavors. **Textbook fee is included. No class on July 5.**

Course **MGT 873**. Equivalent to WECM course ACNT 1044.

35844 Sat 1230 to 4pm **Jun 14 to Aug 23** Valle Verde B-124

American Sign Language I. / \$ 125 / 16 hrs / 1.6 ceus

Establishes good foundation of basic ASL American Sign Language. Learn ASL vocabulary and grammar to converse with hearing-impaired individuals.

No class on July 4.

Course **PIE 857**. Equivalent to WECM course SLNG 1003.

35846 Sat 9 to 11am **Jun 7 to Jul 26** Valle Verde B-187



Preparation for the Texas Landscape Irrigation Exam.

/ \$ 377 / 42 hrs / 4.2 CEUs

Study of applicable codes, laws, regulations, terminology, components, installation methods, design principles, hydraulics control systems, and related information necessary for licensure and practice. Classroom instruction, lab exercises, and practical field experiences. Emphasizes design, installation, maintenance, and repair of sprinkler and irrigation systems. Prepares the student for Texas Landscape Irrigation License Exam. **Textbook fee is included.**

Course **SDG 705**. Equivalent to WECM course HALT 1033.

35847 Tue Thu 6 to 9pm **Jun 10 to Jul 24** Valle Verde A-1510

Real Estate

The requirement for a real estate salesperson's license in the State of Texas is 180 contact hours. Go to trec.texas.gov for more information.

There are six mandatory 30-hour courses in Spring, Summer, and Fall.

- 1 Principles of Real Estate I
- 2 Principles of Real Estate II
- 3 Law of Agency
- 4 Law of Contracts
- 5 Promulgated Contract Forms
- 6 Real Estate Finance

Principles of Real Estate I. / \$ 250 / 30 hrs / 3.0 CEUs

Provides instruction for fundamental real estate principles and practices in Texas. Includes TRELA, TREC, federal, state, and local laws and regulations relating to housing and real estate in general, including discrimination.

Course **RES 813**. Equivalent to WECM course RELE 1002.

35849 Mon Wed 6 to 9pm **Jun 2 to Jul 2** Valle Verde B-105

Principles of Real Estate II. / \$ 250 / 30 hrs / 3.0 CEUs

Required course for application of a salesperson's license. Covers fundamental principles and practices of real estate. Emphasis will be placed on real estate contracts, mortgage theory and law, deed of trust, taxes and assessment, and closing transaction. This course provides coverage of real estate leases / property management, investments, and land-use control. It includes a review of topics covered in Real Estate I. **No class on July 5.**

Course **RES 814**. Equivalent to WECM course RELE 1039.

35848 Sat 12 to 3pm **Jul 14 to Aug 23** Valle Verde B-104

Real Estate Finance. / \$ 250 / 30 hrs / 3.0 CEUs

Required course for application of a salesperson's license. Provides an overview of the US monetary system, primary and secondary money markets, sources of mortgage loans, federal government programs, loan applications, processes and procedure, closing costs, alternative instruments, law affecting mortgage lending and the State Housing Agency. **No class on July 5.**

Course **RES 855**. Equivalent to WECM course RELE 1020.

35850 Sat 9am to 12pm **Jun 14 to Aug 23** Valle Verde B-105

Law of Agency. / \$ 250 / 30 hrs / 3.0 CEUs

Studies the creation of principal-agent relationship, the authority of an agent, agent fiduciary duties, agency disclosure requirements and agency termination. The course examines other real estate employment and regulatory requirements as related to the real estate profession and agency. Legal principles will be reinforced by case studies and student participation.

Course **RES 815.** Equivalent to WECM course RELE 2002.

35851 Tue Thu 6 to 9pm **Jun 3 to Jul 3** Valle Verde B-104

Law of Contracts. / \$ 250 / 30 hrs / 3.0 CEUs

Required course for application of a salesperson's license. Includes studies of Texas Real Estate Commission rules, an emphasis on elements of contracts, offer and acceptance, and remedies of breach of contracts.

Course **RES 852.** Equivalent to WECM course RELE 1012.

35852 Tue Thu 6 to 9pm **Jul 8 to Aug 7** Valle Verde B-110

Promulgated Contract Forms. / \$ 250

/ 30 hrs / 3.0 CEUs

This course includes but is not limited to unauthorized practice of law, broker-lawyer committee, current promulgated and approval forms, commission rules governing use forms and care studies involving use of forms.

Course **RES 816.** Equivalent to WECM course RELE 1000.

35854 Mon Wed 6 to 9pm **Jul 7 to Aug 6** Valle Verde B-104



Professional Floral Design Certificate

If you have a creative nature and a strong desire to own your business or work in a floral shop, this program is designed to meet your needs.

- 1** Floral Design **2** Floral Design II **3** Sympathy Floral Techniques
4 Wedding Floral Techniques **5** Flower Shop Management

Sympathy Floral Techniques. / \$ 180 / 15 hrs / 1.5 CEUs

Unique styles and techniques pertinent to sympathy floral designs will be taught. The use of color and how to combine different flowers for different effects, traditional and modern ways will be introduced. The course will also teach how to use accessories, appropriate use for sympathy cards, and developing a good working relationship with funeral floral buyers or funeral directors. **(Supplies included in fee.)**

Course **SDG 915.** Equivalent to WECM course FMKT 1010.

35856 Tue Thu 6 to 9pm **Jun 3 to Jun 17** Valle Verde B-151

Flower Shop Management. / \$ 160 / 21 hrs / 2.1 CEUs

Modern principles and practices used in the management and operations of retail florist shops. Topics include the structure of the industry, shop location, business plan organization, marketing methods, and management practices. **(Supplies included in fee.)**

Course **SDG 203.** Equivalent to WECM course FMKT 2035.

35857 Tue Thu 6 to 9pm **Jun 24 to Jul 15** Valle Verde B-151

Tropical Design. / \$ 160 / 16 hrs / 1.6 CEUs

During this course, the student will be taught some modern and fun design techniques and will learn about different tropical flowers and foliage varieties handling and care at the same time. **(Supplies included in fee.)**

Course **SDG 204.** Equivalent to WECM course FMKT 1005.

35845 Tue Thu 6 to 8pm **Jul 22 to Aug 14** Valle Verde B-151

EPCC in Partnership with ed2go

are offering the following online courses:

Please visit ED2GO at www.ed2go.com/epcc for many other course offerings.

Fundamental Courses 24 Hrs.

Business

- Administrative Assistant Fundamentals
- Become a Grant Writing Consultant
- Computer Skills for the Workplace
- Distribution and Logistics Management
- Fundamentals of Supervision and Management
- Business Budgeting for Beginner
- Getting Started with Google Workspace
- Personal Finance



Computer Programming

- Designing Effective Websites
- Introduction to C# Programming
- Introduction to CSS3 and HTML5
- Introduction to Java Programming
- Introduction to PC Security
- Introduction to Python 3 Programming



Computer Applications

- Introduction to Microsoft Access 2019
- Introduction to Microsoft Excel 2019
- Intermediate Microsoft Excel 2019

Career Training Programs Certification

Online Career Training Programs

These 6 to 18 month programs are online, self-paced instruction that prepare students for industry certification or any career. Below is a limited sample of courses that are been offered.

See ED2GO at careertraining.epcc.edu for more course offerings.

- Freight Broker/Agent Training (6 Months)
- Chartered Tax Professional (18 Months)
- Certified Residential Interior Designer (6 Months)
- Certified Paralegal (12 Months)
- Python Developer (6 Months)
- Certified Bookkeeper - Exam Included (6 Months)
- Certified Professional Life Coach (6 Months)
- Certified Java Developer (6 Months)

Call: 855-520-6806 for more information on the Career Training Programs

EPCC Employees: Staff Scholarship is available to pay for ED2GO online courses.

Need to reach out to mmlerma14@epcc.edu at extension 6682.

Health and Fitness

Cheryl Stiles, Director.

For more information, email cehealthprograms@epcc.edu or call 915 831-7820 or 915 831-7831.

General Information for Continuing Education Health Courses

These courses have prerequisites or admission requirements mandated by federal law, state law, and local clinical affiliates.

Course prerequisites include

- * **Immunizations.** Hepatitis B, Varicella, Measles, Mumps, Rubella, seasonal flu, Tetanus, Diphtheria, Pertussis or (TDAP), and the two-step tuberculosis skin test.
- * **Positive blood titers.** Students with a hospital clinical rotation must have positive blood titers for hepatitis B, varicella, measles mumps, and rubella. COVID-19 vaccinations may be required by some clinical facilities.
- * **Physical exam** by a physician, physician's assistant, or nurse practitioner licensed to practice in the United States.
- * **Background clearance.** Use the approved EPCC vendor American Databank, at elpasoex.com. Complete this once you have a seat reserved in class.
- * **Drug screen.** Use the approved EPCC vendor American Databank, at elpasoex.com. Complete this once you have a seat reserved in class.
- * **Basic Life Support Provider certification** from the American Heart Association.
- * **Community-Wide Orientation.** Go to epcc.admissionsorientation/community-wide-orientation for this.
- * **HIPAA training.** Go to epcc.edu/academics/health/hipaa for this.
- * **Course-specific requirements.** Some courses have reading level, high school diploma, or GED requirements. (Some classes require first aid certification.) Reading level can be proven by prior college coursework or by placement at college-level English language Arts Reading by TSIA2 or equivalent. Get tested at any EPCC Testing Services Center.
- * **Buy the Complio tracking system.** EMT students must purchase Complio from American Databank to help you be compliant with CPR, first aid, immunizations, physical exam, and other requirements. This system keeps your clinical data updated and compliant.

For information about requirements, call 915 831-7830.

BLS, BLS Renewal and First Aid

BLS: Basic Life Support. / \$ 66 / 5 hrs

This American Heart Association course presents initial CPR for infants, children, and adults, and includes foreign-body airway obstruction, barrier devices, and AED automated external defibrillation training. It meets EPCC specialized admission requirements for health students. **Book provided in class.** (Don't wear shorts, dresses, halter tops or skirts to class.)

Course **SDH 762.**

35554	Tue Thu 530pm to 8pm	Jun 3 and Jun 5	Admin Svc Ctr B-580
35555	Sat 8am to 1pm	Jun 7	Rio Grande A-245
35556	Fri 8am to 1pm	Jun 13	Admin Svc Ctr B-323
35557	Sat 8am to 1pm	Jun 14	Rio Grande A-245
35558	Sat 8am to 1pm	Jun 21	Rio Grande A-245
35559	Tue Thu 530pm to 8pm	Jun 24 and Jun 26	Admin Svc Ctr B-580
35560	Sat 8am to 1pm	Jul 12	Rio Grande A-245
35561	Tue Thu 530pm to 8pm	Jul 15 and Jul 17	Admin Svc Ctr B-580
35562	Sat 8am to 1pm	Jul 19	Rio Grande A-245
35563	Sat 8am to 1pm	Jul 26	Rio Grande A-245
35564	Sat 8am to 1pm	Aug 2	Rio Grande A-245
35565	Sat 8am to 1pm	Aug 9	Rio Grande A-245
35566	Tue Thu 530pm to 8pm	Aug 12 and Aug 14	Admin Svc Ctr B-580
35567	Sat 8am to 1pm	Aug 16	Rio Grande A-245
35568	Tue 8am to 1pm	Aug 19	Admin Svc Ctr B-323
35569	Sat 8am to 1pm	Aug 23	Rio Grande A-245

BLS Renewal. / \$ 64 / 4 hrs

Basic Life Support review updates CPR skills, extending certification two years. **Prerequisite:** Must be BLS certified. Bring current BLS provider card to class. **Book provided in class.** (Don't wear shorts, dresses, halter tops or skirts to class.)

Course **SDH 760.**

35588	Sat 8am to noon	Jun 7	Rio Grande B-205
35589	Wed 530pm to 930pm	Jun 11	Admin Svc Ctr B-580
35590	Fri 8am to noon	Jun 20	Admin Svc Ctr B-323
35591	Sat 8am to noon	Jun 28	Rio Grande B-205
35592	Wed 530pm to 930pm	Jul 9	Admin Svc Ctr B-580
35593	Sat 8am to noon	Jul 19	Rio Grande B-205
35594	Wed 530pm to 930pm	Jul 30	Admin Svc Ctr B-580
35595	Sat 8am to noon	Aug 9	Rio Grande B-205
35596	Thu 8am to noon	Aug 21	Admin Svc Ctr B-323
35597	Sat 8am to noon	Aug 23	Rio Grande B-205

***Must be BLS certified to enroll.** Bring current provider card to class.

First Aid. / \$ 75 / 8 hrs

Properly applied first aid may mean the difference between life and death. Emphasizes fundamental principles and skills of standard first aid. **Prerequisite:** Current BLS provider certification. **Note: Students will receive an instruction sheet in class with an Access Code to redeem First Aid e-book. Cost of e-book is included in tuition.** CPR card must be brought to class. **One hour lunch at instructor's discretion.**

Course **SDH 971.** *Equivalent to WECM course EMSP 1026.

35598	Tue Thu 530pm to 930pm	Jun 10 and Jun 12	Admin Svc Ctr B-580
35599	Sat 8am to 5pm	Jun 14	Rio Grande B-210
35600	Sat 8am to 5pm	Jun 21	Rio Grande B-210
35601	Sat 8am to 5pm	Jun 28	Rio Grande B-210
35602	Sat 8am to 5pm	Jul 12	Rio Grande B-205
35603	Tue Thu 530pm to 930pm	Jul 22 and Jul 24	Admin Svc Ctr B-580
35604	Sat 8am to 5pm	Jul 26	Rio Grande B-205
35605	Sat 8am to 5pm	Aug 2	Rio Grande B-205

35606	Sat 8am to 5pm	Aug 16	Rio Grande B-205
35607	Wed 8am to 5pm	Aug 20	Admin Svc Ctr B-323
35608	Sat 8am to 5pm	Aug 23	Rio Grande B-210

*Must be **BLS certified** to enroll. Bring current provider card to class.

CPR and First Aid for Industry. / \$ 95 / 8 hrs

Are you or your employees prepared to handle injuries that occur on the job? Introduces adult CPR and the basic principles of standard first aid. It will be customized to address the types of injuries which might occur in your workplace using the Emergency Care and Safety Institute Standards. The course can be taught at your location or at EPCC. The Emergency Care Safety Institute First Aid, CPR and AED textbook is included in the cost of the course. Call 915 831-7831 to schedule the course.

Course **SDH 252**. Equivalent to WECM course EMSP 1026.

Clases de RCP en Español

RCP : Resucitación Cardiopulmonar En Español.

/ \$ 66 / 5 hrs

Este curso de la Asociación Americana del Corazón incluye Resucitación Cardiopulmonar, o RCP, para infante y adulto, obstrucciones de las vías aéreas, barreras de protección personal y uso de desfibriladores externos automáticos. El libro se da en clase. El costo del libro está incluido en el precio del curso. Favor de no llevar puesto pantalón corto, falda ó vestido.

Course **SDH 762**.

35609	Sábado 8am to 1pm	Jun 7	Rio Grande A-232
35610	Viernes 8am to 1pm	Jul 25	Admin Svc Ctr B-323

Renovación de RCP. / \$ 64 / 4 hrs

Repaso del curso de proveedor de soporte vital básico para actualizar sus habilidades de RCP y extender la certificación por dos años.

Requisito previo: Tener una certificación BLS actual para inscribirse en esta clase. La tarjeta de proveedor de BLS actual debe traerse a clase. Nota: El libro se entregará en clase. El costo del libro está incluido en el precio del curso. Los estudiantes no deben usar pantalones cortos, vestidos ó faldas en clase.

Course **SDH 760.***

35611	Sábado 8am to noon	Jul 19	Rio Grande A-232
-------	--------------------	---------------	------------------



Dental

El Paso Community College offers the following dental courses to meet TSBDE (tsbde.texas.gov) continuing education requirements for professional development and patient safety.

- Coronal Polishing-8 hrs. \$237
- Pit and Fissure Sealant Application- 8hrs. \$249.50
- Nitrous Oxide Sedation Monitoring and Exam- 8hrs. \$200

For more information call (915) 831-7830.

Emergency Medical Services

ACLS : Advanced Cardiac Life Support.

/ \$ 240 / 12 hrs / 1.2 CEUs

Skill development for professional personnel practicing in critical care units, emergency departments, and paramedic ambulances. Establishes a system of protocols for management of patients experiencing cardiac difficulties.

Prerequisite: Must hold current BLS Provider certification. One hour lunch at instructor's discretion. **Textbook provided in class.**

Course **SDH 929**. Equivalent to WECM course EMSP 1019.

35612	Sat 8am to 5pm Sun 8am to noon	Jun 14 to Jun 15	Admin Svc Ctr B-323
35613	Sat 8am to 5pm Sun 8am to noon	Aug 2 to Aug 3	Admin Svc Ctr B-323

Advanced Cardiac Life Support Refresher.

/ \$ 160 / 8 hrs / 0.8 CEUs

Refresher course for professional personnel practicing in critical care units, emergency departments, and paramedic ambulances. Reviews the system of protocols for management of patients experiencing cardiac difficulties.

Prerequisite: Must hold current BLS Provider and ACLS certifications. One hour lunch at instructor's discretion. **Textbook provided in class.**

Course **SDH 886**. Equivalent to WECM course EMSP 2036.

35614	Sat 8am to 5pm	Jun 28	Admin Svc Ctr B-323
-------	----------------	---------------	---------------------

PALS : Pediatric Advanced Life Support.

/ \$ 330 / 16 hrs / 1.6 CEUs

A system of protocols for management of the pediatric patient experiencing difficulties in medical and trauma-related emergencies. Allows health care professionals involved in the care of pediatric patients to practice and improve their knowledge and skills in pediatric assessment and resuscitation.

Prerequisite: Must hold current BLS Provider certification. One hour lunch at instructor's discretion. **Textbook provided.**

Course **SDH 892**. Equivalent to WECM course EMSP 1047.

35615	Sat Sun 8am to 5pm	Jul 12 to Jul 13	Admin Svc Ctr B-323
-------	--------------------	-------------------------	---------------------

PALS : Pediatric Advanced Life Support Refresher.

/ \$ 160 / 8 hrs / 0.8 CEUs

A review of the PALS course allows health care professionals involved in the care of pediatric patients to review, practice, and improve their knowledge and skills in pediatric assessment and resuscitation. **Prerequisite:** Must hold current BLS Provider and PALS certifications. One hour lunch at instructor's discretion. **Textbook provided in class.**

Course **SDH 653**. Equivalent to WECM course EMSP 2036.

35616	Sat 8am to 5pm	Jul 26	Admin Svc Ctr B-323
-------	----------------	---------------	---------------------

Emergency Medical Technician

To register for the following concurrent EMT courses, students must email to cehealthprograms@epcc.edu the following prerequisites. Call 915 **831-7020** for more information.

- * High school diploma or GED.
 - * Proof of 12th grade reading level.
 - * BLS certification card certified within the last six months.
 - * Copy of current health insurance.
 - * Complio immunizations tracker.
- See page 9 for further requirements.

EMT Basic

This two-part course covers the principles and skills of pre-hospital emergency medical care. The clinical includes ambulance and hospital experience. Upon successful completion, student can take the State Certification Exam for EMT-Basic.

Student must enroll in SDH 884 and 872 concurrently.

Conc indicates a concurrent course open to both degree-plan and CE students. It is limited to age 17 or older. See page 51.

Emergency Medical Technician Basic.

/ \$ **685** / 160 hrs / 16.0 CEUs

Introduces the level of EMT Emergency Technician Basic. Includes skills necessary to provide emergency medical care at a basic life support level with an ambulance service or other specialized services. **Corequisite:** SDH 872, Clinical Emergency Medical Technology / Technician I. You are strongly urged to take Anatomy and Physiology if you plan to take advanced EMT courses.

Course **SDH 884**. Equivalent to WECM course EMSP 1001.

Conc 35617 Lab Mon Wed 8am to 1am **Jun 9 to Aug 15** MDP D-134
Lecture Fri 8am to 2am

Clinical Emergency Medical Technology / Technician I.

/ \$ **173.50** / 80 hrs / 8.0 CEUs

Provides a health-related, work-based learning experience enabling students to employ specialized occupational theory, skills, and concepts. A clinical professional provides direct supervision. **Corequisite:** SDH 884, EMT : Basic.

Course **SDH 872**. Equivalent to WECM course EMSP 1060.

Conc 35618 Mon to Sun TBA **Jun 9 to Aug 15** Mission Del Paso D-13



General Health Courses

Conc indicates a concurrent course open to both degree-plan and CE students. It is limited to age 17 or older. See page 53.

Essentials of Medical Terminology. Online.

/ \$ **324** / 32 hrs / 3.2 CEUs

Studies common medical terminology, word origin, structure, and application.

Course **AHP 792**. Equivalent to WECM course HPRS 1006.

Conc 35619 Online Time tba. **Jun 6 to Aug 8** Online

Essentials of Medical Terminology.

/ \$ **274** / 32 hrs / 3.2 CEUs

Studies common medical terminology, word origin, structure, and application.

Course **AHP 809**. Equivalent to WECM course HPRS 1006.

Conc 35620 Tue Thu 8am to 11am **Jul 14 to Aug 15** Rio Grande A-241

Interpretation of Lab Results. (Online.)

/ \$ **324** / 32 hrs / 3.2 CEUs

Introduces interpretation of commonly ordered laboratory test results used to evaluate patient's status.

Course **AHP 510**. Equivalent to WECM course HPRS 1009.

Conc 35621 Time TBA **Jun 9 to Aug 15** Online

El Paso Community College, in partnership with Ed2Go, offers 6-week online courses designed to assist you in beginning or advancing your health education. We are also offering wellness classes.

Here are a few examples.

- Spanish for Medical Professionals, I and II.
- Medical Math.
- Certificate in End Life Care.
- Certificate in Gerontology.
- Certificate in Infectious Diseases and Infection Control.
- Certificate in Healthy Aging.
- HIPAA Compliance.
- TEAS Prep Series.
- Lose Weight and Keep It Off.
- Introduction to Natural Healing.
- Certificate in Energy Medicine.
- Certificate in Complementary and Alternative Medicine.
- Certificate in Food, Nutrition, and Health.

Go to the Ed2go Catalog at ed2go.com/epcc for more information, details, and many more courses.

Medication Aide

Continuing Education Rules for Medication Aides.

The Texas Health and Human Services Commission (THHSC), requires that Medication Aides attend a seven-hour Medication Aide Update course to maintain certification. THHSC recommends that Medication Aides take the update course at least 90 days prior to the expiration date of their permit. Students must bring their Medication Aide permit number to class, so the hours can be reported to THHSC.

/ **Go to** txhhs.my.site.com/tulip/login for more information about the renewal licensing process and a link to the Tulip login page.

Medication Aide Update. / \$ 70 / 7 hrs / 0.7 CEUs

Fulfills the annual renewal requirements for Certified Medication Aides according to specifications of the Texas Health and Human Services Commission. Students must register 2 weeks before the start of class.

Course **AHP 802**. Equivalent to WECM course NURA 1041.

35622	Sat 9am to 5pm	Jun 7	Rio Grande A-236
35623	Sat 9am to 5pm	Aug 16	Rio Grande A-236

Medication Aide. / \$ 500 / 140 hrs / 14.0 CEUs

Approved by the Texas Health and Human Services Commission, this course prepares Certified Nurse Aides to administer routine medications to people in a Skilled Nursing Facility, MHMR facility, correctional institution, or personal care facility. The course is designed for individuals who work directly with patients in a health care setting under the supervision of a nurse. The course will also address the responsibilities associated with the preparation and administration of designated medications.

The course prerequisites are

- * Aged 18 years at minimum
- * High school diploma or GED
- * Social Security card and a Nurse Aide License
- * College level coursework/10th-grade reading level -- tested
- * Clearance letter from current employer stating student is free of communicable diseases and in suitable physical, and emotional health to safely administer medications
- * Employment in a long-term care facility allowing student to complete a 10-hour clinical at this location
- * Fingerprint-based criminal history check by the Department of Public Safety, paid for through the DPS vendor at dps.texas.gov/section/crime-records
- * Textbook and drug handbook, which must be brought to the first day of class. Buy these at the Rio Grande campus bookstore.

After these prerequisites are presented to the division office, students are admitted on a first-come first-served basis. Class is limited to 12 students.

Course **AHP 801**. Equivalent to WECM course NURA 1013.

Mon Tue 530 to 930pm	TBA-Fall 2025	Rio Grande A-236
----------------------	---------------	------------------

Nursing Refresher

Includes a 16-week online instruction course through Austin Community College, a skills lab review course, and a clinical preceptorship appropriate for both RNs and LVNs. Nurses review basic medical surgical nursing knowledge and skills in preparation for returning to the clinical setting.

Students will take an online theory portion with Austin Community College and the Nursing Skills Lab Review at EPCC, and for the clinical portion will be placed in a local hospital with a preceptor.

This course is designed for:

- Currently-licensed RN or LVN nurses who have been away from the clinical setting for a period of time, and who want a good medical or surgical refresher before going back to the clinical setting.
- Nurses applying for reinstatement of their Texas nursing license who need or are required to complete a nursing refresher course
- Nurses from another state or country applying for Texas nursing licensure, and are required to complete a nursing refresher course.

See page 9 for a list of prerequisites that need to be submitted to the Continuing Education office at the Administrative Services Center, Room B-425.

Reentry Nursing Update. Online. / 128 hrs

LVN Refresher Theory. Online. / 128 hrs

Interested students should contact Wendy Pickard, Nurse Reentry Program Coordinator at Austin Community College, at wpickard@austincc.edu or at (512) 223-7119. Go to continue.austincc.edu/nursing for further information on course and registration.

Professional Nursing Review. / \$ 200 / 18 hrs / 1.8 CEUs

Course **AHP 354**. Equivalent to WECM course RNSG 2030.

Times and dates TBA	Rio Grande Nursing Lab
---------------------	------------------------

Clinical : Licensed Practical / Vocational Nursing Training. / \$ 300 / 80 hrs / 8.0 CEUs

Course **AHP 803**. Equivalent to WECM course VNSG 1060.

Times and dates TBA.	Local hospital
----------------------	----------------

Clinical : Nursing Registered Nurse Training.

/ \$ 300 / 80 hrs / 8.0 CEUs

Course **AHP 804**. Equivalent to WECM course RNSG 1060.

Times and dates TBA.	Local hospital
----------------------	----------------

Call 915 831-7830 for further information.

Nursing Assistant

Interested in a health career? The nursing assistant course is an excellent starting place. Nursing assistants are the caregivers who help patients of all ages perform the most basic day-to-day tasks. Nursing assistant is one of the fastest growing occupations in the nation. **Prerequisites for this course are listed on page 9.** (Please contact division office for clarification of prerequisites.)

Student must have book on the first day of class. Student must be 17 years old by the first day of class.

Proof of prerequisites must be submitted to the Continuing Education office prior to registration. Call 915 **831-7831** or email cehealthprograms@epcc.edu for more information.

Nursing Assistant Theory. / \$ 350 / 112 hrs / 12.0 CEUs

Presents the concepts and skills required to provide basic patient care in a health care facility or in a person's home. Topics include patient's rights, communication, safety, observation, reporting, and assisting patients in maintaining basic comfort and safety. Emphasis on effective interaction with members of the health care team.

Course **AHP 117.** Equivalent to WECM course NURA 1091.

35624 Mon to Fri 8am to 3pm **Jun 16 to Jul 11** Rio Grande A-236

Nursing Assistant Clinical. / \$ 350 / 80 hrs / 8.0 CEUs

A work-based learning direct patient care experience that allows students to apply knowledge learned in the Nursing Assistant class. **Note:** Professional Practice Insurance fee is included in tuition.

Course **AHP 118.** Equivalent to WECM course NURA 1060.

35625 Mon to Fri 630am to 330pm **Jul 14 to Jul 25.....** Private facility

Pharmacy Technician

Conc indicates a concurrent course open to both degree-plan and CE students. It is limited to age 17 or older. See page 53.

Concurrent Pharmacy Courses

Pharmacy Terminology. / \$ 300 / 32 hrs / 3.2 CEUs

Provides a study of word origins and structure through the introduction of prefixes, suffixes, and root words as it relates to a pharmaceutical setting. Focuses on translation and recognition of commonly used pharmacy abbreviations.

Course **AHP 393.** Equivalent to WECM course PHRA 1015.

Conc 35626 Day and times TBA **Jun 9 to Aug 15** Online



Pharmacy Drug Therapy and Treatment. / \$ 682

/ 96 hrs / 9.6 CEUs

Studies therapeutic agents, their classifications, properties, actions, and effects on the human body and their role in the management of disease. Provides detailed information regarding drug dosage, side effects, interactions, toxicities, and incompatibilities.

Course **AHP 777.** Equivalent to WECM course PHRA 1041.

Conc 35627 Mon Wed 1030am to 1220pm **Jun 9 to Aug 15** Rio Grande J-655

Lab TBA

Hybrid online.

EKG Technician

EKG Technician. / \$ 420 / 48 hrs / 4.8 CEUs

Includes practice and background information on anatomy and physiology of the heart, disease processes, medical terminology, medical ethics, legal aspects of patient contact, and laboratory assisting electrocardiography. Students practice with equipment in hands-on labs, which include the function and proper use of an EKG machine, 12-lead placement with proper placement upon the normal anatomy of the chest wall, and other clinical practices. Recommended for healthcare professionals such as CNAs, phlebotomists, EMTs, and medical assistants. **Prerequisites:** Must hold current BLS certification.

Course **AHP 552.** Equivalent to WECM course ECRD 1011

35628 Mon Wed 9am to noon **Jun 16 to Aug 6** Admin Svc Ctr B-323

Phlebotomy Technician

Phlebotomy Technician : Theory. / \$ 400

/ 90 hrs / 9.0 CEUs

Prepares students for entry-level positions in phlebotomy and laboratory support services. Upon completion, students are eligible to sit for the phlebotomy technician examination offered by ASCP, the American Society of Clinical Pathology. The course presents principles and procedures, both theoretical and practical, associated with the collection of clinical blood specimens. Course includes anatomy and physiology of the cardiovascular system, specimen collection, processing and handling; laboratory operations (safety, QC, QA, etc), professionalism, ethics, legal issues, safety, infection control, and medical terminology. Skills learned include venipuncture, skin puncture, and special blood collections. **Prerequisites:** See page 9 for general requirements. Requires high school diploma or GED, and a tested 10th-grade reading level. **Corequisite:** You must take Phlebotomy Technician Clinical AHP 806 at the same time. Enrollment is limited to 24 students. Student must purchase the required textbook, scrubs, and an EPCC patch. For further information, call the division office at 915 831-7830.

Course **AHP 805.** Equivalent to WECM course PLAB 1023.

35629 Mon Wed 11am to 330pm **May 28 to Aug 6** Rio Grande J-731

35630 Tue Thu 11am to 330pm **May 27 to Aug 8** Rio Grande J-731

Phlebotomy Technician Clinical. / \$ 300

/ 120 hrs / 12.0 CEUs

This course must be taken concurrently with AHP 805, Phlebotomy Technician Theory. Students will demonstrate venous and capillary blood drawing techniques and procedures required to perform as an entry level Phlebotomy Technician, based on Clinical and Laboratory Standards Institute (CLSI). Students will be required to travel to various clinical sites and be available for clinicals 12-15 hours per week for clinicals. **Corequisite:** Student must also enroll in Phlebotomy Technician Theory, AHP 805. **NOTE: Professional Practice insurance fee is included in tuition.**

Course **AHP 806.** Equivalent to WECM course PLAB 1060.

35361 Mon Wed lab 4pm to 8pm **Jun 2 to Aug 22** Private facility
Mon to Sat, dates TBA

35632 Tue Thu lab 4pm to 8pm **Jun 2 to Aug 22** Private facility
Mon to Sat, dates TBA



Patient Care Technician

Patient Care Technician. / \$ 500 / 48 hrs / 4.8 CEUs

Prepares students for an entry-level position within a healthcare setting such as a hospital or subacute care setting. Patient Care Technicians care for injured, physically and mentally ill, disabled, and infirm patients. They perform routine tasks under the supervision of doctors, nurses and other medical professionals, monitor the patient's condition, and provide basic patient care. The PCT plays a vital role in the healthcare delivery team, and often have more patient contact than other team members, including doctors and nurses. **Prerequisites:** Nurse Assistant, Phlebotomy, and EKG Technician, or completion of courses in EMT and Medical Assistant.

Course **AHP 560**. Equivalent to WECM course NUPC 1020.

Mon Wed 230 to 430pm	TBA	Admin Svc Ctr B-323
----------------------	-----	---------------------

Journey to Wellness / Fitness

Stretch and Rest - Yin Yoga. / \$ 100 / 12 hrs

Yin Yoga involves holding passive poses for a long duration of time, which allows it to work deeply into our bodies. This type of yoga targets connective tissues such as ligaments, joints, and bones, as well as the deep fascia networks of the body and the meridians. Yin yoga is in contrast to Yang yoga, which targets the muscles. Instructor is Tracy Searight.

Course **AHW 112**. \$100

35633	Tue Thu 530 to 630pm	Jun 3 to Jul 10	Valle Verde G-102
35634	Tue Thu 530 to 630pm	Jul 15 to Aug 21	Valle Verde G-102

Summer Bodies. / \$ 100 / 12 hrs

Comprehensive course aimed at achieving fitness and wellness objective ahead of the summer season. Course adopts a holistic framework, integrating physiology, nutrition, and psychological wellbeing to promote lifestyle modification. Students will focus on enhancing body composition with specific emphasis on muscle toning and sculpting. No class on July 5 and August 30. Instructor is Luis Vazquez.

Course **AHW 120**.

35885	Sat 8 to 10am	Jun 14 to Jul 26	Mission Del Paso R-101
35886	Sat 8 to 10am	Aug 2 to Sep 13	Mission Del Paso R-101
35887	Mon to Thu 530 to 629pm	Jun 2 to Jun 19	Transmountain 1403
35888	Mon to Thu 530 to 629pm	Jun 23 to Jul 10	Transmountain 1403
35889	Mon to Thu 530 to 629pm	Jul 14 to Jul 31	Transmountain 1403
35890	Mon to Thu 530 to 629pm	Aug 4 to Aug 21	Transmountain 1403

Weightlifting Techniques. / \$ 100 / 12 hrs

A comprehensive course designed for individuals new to weightlifting, providing a solid foundation in proper techniques, safety practices, and effective training strategies. Students will learn foundation concepts, master advanced techniques, develop customized training protocols, and understand safety and injury protection. Instructor is Luis Vazquez.

Course **AHW 119**.

35893	Mon to Thu 630 to 7pm	Jun 2 to Jun 19	Transmountain 1403
35894	Mon to Thu 630 to 7pm	Jun 23 to Jul 10	Transmountain 1403
35895	Mon to Thu 630 to 7pm	Jul 14 to Jul 31	Transmountain 1403
35896	Mon to Thu 630 to 7pm	Aug 4 to Aug 21	Transmountain 1403

Belly Dance Fitness. / \$ 100 / 12 hrs

Introduces the fundamentals of belly dancing, providing a new type of fitness routine. Covers belly dance moves emphasizing proper posture and coordination, connecting with the pelvic floor while rooting the body. **No class on July 5 and 17.** Instructor is Sonia Flores.

Course **AHW 111**.

35891	Tue Thu 530 to 7pm	Jun 3 to Jun 26	Rio Grande J-703
35892	Tue Thu 530 to 7pm	Jul 1 to Jul 31	Rio Grande J-703

Hatha Yoga. / \$ 100 / 12 hrs

Hatha Yoga releases tension and creates energy. Through yoga, cultivate the natural beauty of your body by attaining a high level of health. Learn the fundamental postures and breathing techniques used in yoga philosophy. Positive side effects include increased vitality, mental stimulation and rejuvenation, body tissue elasticity, and stress and trauma relief. Develop a treatment awareness of the individual as a whole. Find the potential for a lifetime of stress relief, and the emergence of hidden beauty and a more positive attitude. Instructor is Maria Castillo.

Course **AHW 101**.

35639	Tue Thu 530 to 630pm	May 27 to Jul 3	Admin Svc Ctr B-323
35640	Tue Thu 530 to 630pm	Jul 8 to Aug 14	Admin Svc Ctr B-323

■ Chair Pilates. / \$ 100 / 12 hrs

Pilates is a complete fitness for a higher quality of life. This chair-based, low-impact, safe and comfortable class improves muscles, flexibility, posture, and overall health, and targets key muscle groups to promote alignment and mobility. Enjoy improved balance, reduced joint pain, and an energy boost. **No class on May 26.** Instructor is Maria Castillo.

Course **AHW 100**.

28128	Mon Wed 530 to 630pm	May 19 to Jun 30	Admin Svc Ctr B-323
35641	Mon Wed 530 to 630pm	Jul 7 to Aug 13	Admin Svc Ctr B-323

Zumba. / \$ 100 / 12 hrs

Cardio dance workout with a Latin flair--Ditch the workout and join the party! The hottest and most exciting workout sizzling its way across America! Inspired by cumbia, salsa, and merengue music, people are falling in love with the music, easy-to-follow steps and body benefiting results. **No class on May 26.** Instructor is Mari Lu Urrieta.

Course **AHW 103**.

28129	Mon to Thu 5 to 605pm	May 19 to Jun 5	Admin Svc Ctr A-437
28130	Mon to Thu 610 to 715pm	May 19 to Jun 5	Online
35642	Mon to Thu 5 to 6pm	Jun 9 to Jun 26	Admin Svc Ctr A-437
35643	Mon to Thu 6 to 7pm	Jun 9 to Jun 26	Online
35644	Mon to Thu 5 to 6pm	Jul 7 to Jul 24	Admin Svc Ctr A-437
35645	Mon to Thu 6 to 7pm	Jul 7 to Jul 24	Online
35646	Mon to Thu 5 to 6pm	Jul 28 to Aug 14	Admin Svc Ctr A-437
35647	Mon to Thu 6 to 7pm	Jul 28 to Aug 14	Online

Abdominal and Weight Toning. / \$ 100 / 12 hrs

Would you like to lose inches around your waist and see some toning and muscle definition in your arms and abdomen? We will work on the abdomen for the first 30 minutes and weight toning for the second 30 minutes. You will see results within weeks. Wear shorts or comfortable workout clothes. Bring a yoga mat and a pair of 7-pound dumb bell weights to class.

No class on May 26. Instructor is Sergio Uranga.

Course **AHW 104.**

28131	Mon Wed 6 to 655pm	May 19 to Jun 30	Valle Verde G-102
35648	Mon Wed 6 to 655pm	Jul 7 to Aug 13	Valle Verde G-102

Fitness Kickboxing. / \$ 100 / 12 hrs

Kickboxing develops skills necessary to improve cardiovascular fitness and safety awareness. Traditional kickboxing techniques will be introduced. Wear shorts or workout clothes, and bring a small towel and a water bottle to class.

No class on May 26. Instructor is Sergio Uranga.

Course **AHW 105.**

28132	Mon Wed 7 to 8pm	May 19 to Jun 30	Valle Verde G-102
35649	Mon Wed 7 to 8pm	Jul 7 to Aug 13	Valle Verde G-102

Martial Art / Kenpo Karate. / \$ 100 / 12 hrs

Develop self-discipline and self-confidence. Covers conditioning, basics, and self defense techniques. By the end of the class students will be leaner, stronger, able to defend in any situation. **Students must wear a black or white karate uniform.** Bring a small towel and a water bottle to class.

No class on July 5. Instructor is Sergio Uranga.

Course **AHW 106.**

35650	Sat 7 to 830am	Jun 7 to Aug 2	Valle Verde G-102
-------	----------------	-----------------------	-------------------

Golf. / \$ 100 / 6 hrs

Learn the fundamentals of golf and swing like a pro. Designed for all skill levels to improve the swing and lower the score. Class is held at Ascarate Park. **You must pay all park fees and buy your own range balls.** Instructor is PGA Golf professional Mike Smith.

Course **AHW 110.**

35651	Thu 630 to 8pm	Jun 5 to Jun 26	Ascarate Golf Course, 6900 Delta
-------	----------------	------------------------	----------------------------------

Weight Training. / \$ 138 / 48 hrs

Presents weight lifting skills and techniques, such as proper sitting, exercise, breathing, spotting, and safety procedures. Reviews the history, terminology, and principles of weight training.

Course **AHW 107.**

Conc 35652	Mon to Fri 9-1050am	Jul 14 to Aug 15	Valle Verde G-103
------------	---------------------	-------------------------	-------------------



Jogging. / \$ 138 / 48 hrs

Covers the basic skills of running, stretching form pace, and breathing. Includes student participation.

Course **AHW 109.**

Conc 35653	Mon to Fri 7 to 850am	Jun 9 to Jul 11	Valle Verde G-104
Conc 35654	Mon to Fri 7 to 850am	Jul 14 to Aug 15	Valle Verde G-104

Massage Therapy

The 525-hour Massage Therapy Certificate Program prepares students for state licensure through the Texas Department of Licensing and Regulation, emphasizing professionalism and safe practice. Administrative Service Center classes at 9050 Viscount are held in a state-of-the-art massage suite with classrooms, an internship room, and spa facilities. Students learn advanced techniques such as sports, prenatal, and spa massage.

The program admission requirements are

- : High school diploma or GED
- : 10th grade reading level or above
- : Current American Heart Association BLS certification
- : Current First Aid certification
- : Vaccination for meningitis if under 22 years old, and
- : Attendance at an orientation session

Note: BLS Provider and First Aid courses will be scheduled specifically for massage students two weeks before the start of the first massage course.

*Financial assistance may be available for individuals who qualify. Complete your Fafsa form, the Free Application for Federal Student Aid, at fafsa.ed.gov at least 8 weeks before registration.

Weekday Class: July 2025 to January 2026

Massage Therapy Fundamentals.

/ \$ 758 / 125 hrs / 12.5 CEUs

Course **MSSG 1011.**

18263	Mon to Thu 830am to 130pm	Sep 2 to Oct 14	Admin Svc Ctr B-128
-------	---------------------------	------------------------	---------------------

Massage Therapy Fundamentals II.

/ \$ 532 / 75 hrs / 7.5 CEUs

Course **MSSG 2011.**

18264	Mon Wed 830am to 130pm	Oct 15 to Nov 19	.Admin Svc Ctr B-128
-------	------------------------	-------------------------	----------------------

Mon to Thu 830am to 130pm **Nov 20 to Nov 26**

Kinesiology. / \$ 328 / 50 hrs / 5.0 CEUs

Course **MSSG 2013.**

35655	Tue Thu 230 to 538pm	Jul 8 to Aug 28	Admin Svc Ctr B-128
-------	----------------------	------------------------	---------------------

Anatomy and Physiology for Massage.

/ \$ 532 / 75 hrs / 7.5 CEUs

Course **MSSG 1013.**

18266	Tue Thu 230 to 538pm	Sep 2 to Nov 25	Admin Svc Ctr B-128
-------	----------------------	------------------------	---------------------

Health and Hygiene. / \$ 125 / 20 hrs / 2.0 ceus

Course **MSSG 1009.**

35656	Tue Thu 830am to 130pm	Jul 28 to Jul 31	Admin Svc Ctr B-128
-------	------------------------	-------------------------	---------------------

Hydrotherapy / Therapeutic Modalities.

/ \$ 125 / 20 hrs / 2.0 CEUs

Course **MSSG 1005.**

35657	Mon Wed 830am to 130pm	Aug 4 to Aug 13	Admin Svc Ctr B-128
-------	------------------------	------------------------	---------------------

Pathology for Massage. / \$ 276 / 40 hrs / 4.0 CEUsCourse **MSSG 2014.**35658 Tue Thu 830am to 130pm **Aug 5 to Aug 14** Admin Svc Ctr B-128
Mon to Thu 830am to 130pm **Aug 18 to Aug 21****Business Practices and Professional Ethics.**

/ \$ 300 / 45 hrs / 4.5 CEUs

Course **MSSG 1007.**18267 Tue Thu 830am to 130pm **Oct 16 to Nov 18** Admin Svc Ctr B-128**Internship Massage Therapy / Therapeutic Massage.**

/ \$ 374 / 75 hrs / 7.5 CEUs

Course **MSSG 2086.**Mon to Thu, Sat times tba **Dec 21** to Jan 10 Admin Svc Ctr B-141**Weekend Class : May 2025 to February 2026.****Massage Therapy Fundamentals.**

/ \$ 758 / 125 hrs / 12.5 CEUs

Course **MSSG 1011.**26967 Sat 830am to 1230pm **May 10 to Sep 21** Admin Svc Ctr B-128
Sun 9am to 1pm**Health and Hygiene. / \$ 125 / 20 hrs / 2.0 CEUs**Course **MSSG 1009.**26968 Sat 130 to 530pm **May 10 to Jun 14** Admin Svc Ctr B-128**Kinesiology. / \$ 328 / 50 hrs / 5.0 CEUs**Course **MSSG 2013.**26969 Wed 530 to 930pm **May 7 to Jul 30** Admin Svc Ctr B-128**Massage Therapy Fundamentals II.**

/ \$ 532 / 75 hrs / 7.5 CEUs

Course **MSSG 2011.**18268 Sat 830am to 1230pm Sep 21 to Dec 6 Admin Svc Ctr B-128
Sun 9am to 1pm**Anatomy and Physiology for Massage.**

/ \$ 532 / 75 hrs / 7.5 CEUs

Course **MSSG 1013.**

35927 Wed 530 to 930pm Aug 6 to Dec 10 Admin Svc Ctr B-128

Hydrotherapy/Therapeutic Modalities.

/ \$ 125 / 20 hrs / 2.0 CEUs

Course **MSSG 1005.**

35928 Sat 130 to 530pm Jun 21 to Jul 26 Admin Svc Ctr B-128

Pathology for Massage. / \$ 276 / 40 hrs / 4.0 CEUsCourse **MSSG 2014.**

35659 Sat 130 to 530pm Aug 2 to Oct 11 Admin Svc Ctr B-128

Business Practices and Professional Ethics.

/ \$ 300 / 45 hrs / 4.5 CEUs

Course **MSSG 1007.**18270 Sat 130 to 530pm Oct 18 to Dec 6 Admin Svc Ctr B-128
Sat 830am to 1230pm/130pm to 530pm **Dec 13** and **Dec 20****Internship Massage Therapy / Therapeutic Massage.**

/ \$ 374 / 75 hrs / 7.5 CEUs

Course **MSSG 2086.**

Mon to Sun, times tba Jan 6 to Feb 8 Admin Svc Ctr B-141

Nail Technician

This 624-hour program prepares individuals to join one of the fastest areas of growth in the cosmetology industry -- nail care. This growth has created the need for properly trained and licensed nail technicians. Our program emphasizes specialized training in safety, sanitation, state laws, rules and regulations, nail diseases and disorders, skin and nail care, and work ethics. The curriculum meets the Texas Department of Licensing and Regulations cosmetology guidelines.

The program requires :

- : A high school diploma or GED
- : Attend an orientation session
- : Vaccination for meningitis if under 22 years old, and
- : A valid US identification card

Call 915 **831-6547**, or email cehealthprograms@epcc.edu for more information.

Evening and Weekend Class**Orientation to Nail Technology. / \$ 1,025 / 160 hrs / 16.0 CEUs**Course **CSME 1030.**35660 Mon Tue Wed 5 to 9pm **Jun 9 to Jul 28** Admin Svc Ctr B-120
Sat Sun 9am to 3pm**Manicuring and Related Theory. / \$ 1,025 / 160 hrs / 16.0 CEUs**Course **CSME 1043.**35661 Mon Tue Wed 5 to 9pm **Jul 29 to Sep 14** Admin Svc Ctr B-120
Sat Sun 9am to 3pm**Nail Enhancements. / \$ 897 / 140 hrs / 14.0 CEUs**Course **CSME 2030.**18271 Mon Tue Wed 5 to 9pm **Sep 15 to Oct 26** Admin Svc Ctr B-120
Sat Sun 9am to 3pm**Principles of Nail Technology I. / \$ 718 / 112 hrs / 11.2 CEUs**Course **CSME 1031.**18272 Mon Tue Wed 5 to 9pm **Oct 26 to Dec 1** Admin Svc Ctr B-120
Sat Sun 9am to 3pm**Preparation for the State Licensing Written Exam.**

/ \$ 333 / 52 hrs / 5.2 CEUs

Course **CSME 2051.**Mon Tue Wed 5 to 9pm **Dec 2 to Dec 16** Admin Svc Ctr B-120
Sat Sun 9am to 3pm

Law Enforcement

Barry Bogle, Director. Call 915 **831-7118** for more information.

The Law Enforcement Training Academy is an approved training provider for Texas Commission on Law Enforcement and Texas Private Security Bureau. **You must register in person** at the Mission Del Paso Training Academy. **Day Academy** 8am to 5pm, **Evening** 6 to 10pm.

■ Texas Peace Officer I. / \$ 800 / 176 hrs / 17.6 CEUs

Basic preparation for new peace officers. Must be taken in conjunction with Texas Peace Officer II, III, IV, and V to satisfy the TCOLE Texas Commission on Law Enforcement approved Texas Peace Officer Training Academy. Course includes fitness and wellness, history of policing, professionalism and ethics, constitutional law, the criminal justice system, Texas criminal laws, civil process, and stress management. **Prerequisites:** Must be at least 20 years of age upon entering the Academy, and must pass a state background check. Other restrictions apply. (This course may be offered only by institutions licensed by TCOLE as a police academy.) You must call the Training Academy at 915 831-7118 for application and pretesting.

Course **CJLE 1006.**

35551	Mon to Fri 8 to 5pm	Jun 23 to Jul 25	MDP Academy
-------	---------------------	-------------------------	-------------

Texas Peace Officer II. / \$ 800 / 176 hrs / 17.6 CEUs

Basic preparation for new peace officers. Must be taken in conjunction with Texas Peace Officer II, III, IV, and V to satisfy the TCOLE Texas Commission on Law Enforcement approved Texas Peace Officer Training Academy. Course includes oral and written communications, use-of-force law and concepts, problem solving, multiculturalism, professionalism in policing approaches, patrol procedures, victims of crime, family violence, MHMR, crowdmanagement, hazmat, racial profiling, asset forfeiture, and TABC controlled substances and dangerous drugs. **Prerequisite:** Successful completion of Texas Peace Officer I. (This course may be offered only by institutions licensed by TCOLE as a police academy.)

Course **CJLE 1012.**

35662	Mon to Fri 8 to 5pm	Jul 28 to Aug 29	MDP Academy
-------	---------------------	-------------------------	-------------

Texas Peace Officer III. / \$ 800 / 176 hrs / 17.6 CEUs

Basic preparation for new peace officers. Must be taken in conjunction with Texas Peace Officer II, III, IV, and V to satisfy the TCOLE Texas Commission on Law Enforcement approved Texas Peace Officer Training Academy. Course includes laws involving traffic laws and collision investigations, criminal investigation, ID theft, and SFST. **Prerequisite:** Successful completion of Texas Peace Officer II. (This course may be offered only by institutions licensed by TCOLE as a police academy.)

Course **CJLE 1018.**

Texas Peace Officer IV. / \$ 1,200 / 176 hrs / 17.6 CEUs

Basic preparation for new peace officers. Must be taken in conjunction with Texas Peace Officer II, III, IV, and V to satisfy the TCOLE Texas Commission on Law Enforcement approved Texas Peace Officer Training Academy. Course includes application of laws directly related to police field work. Requires the development of skills needed of a police officer to include patrolling, police driving, traffic stops, use of force, mechanics of arrest, firearms training, and emergency medical care. Applies the techniques and procedures used by officers to field situations. **Prerequisite:** Successful completion of Texas Peace Officer III. (This course may be offered only by institutions licensed by TCOLE as a police academy.)

Course **CJLE 1024.**

Texas Peace Officer V. / \$ 800 / 176 hrs / 17.6 CEUs

This introductory course provides basic preparation for a new peace officer. This course should be taken in conjunction with Texas Peace Officer I, II, III and IV to satisfy the Texas Commission on Law Enforcement (TCOLE) approved Basic Peace Officer Training Academy requirements and to satisfy local needs as determined by the local law enforcement community. The training course includes Police M-4 Patrol Rifle, Police Radar Certification, OC Certification, and Taser Certification. **Prerequisite:** Successful completion of Texas Peace Officer IV. (This course may be offered only by institutions licensed by TCOLE as a police academy.)

Course **CJLE 1029.**

Security Officer Basic Training II. / \$ 50 / 8 hrs / .08 CEUs

For people seeking employment as a non-commissioned, unarmed Texas security officer, in a curriculum established by the Texas DPS Private Security Bureau covering Level II training requirements. **Prerequisite:** Must be at least 18 years of age.

Course	SDE 803.		\$50
35663	Mon 8am to 5pm	Jun 9	MDP Academy
35664	Mon 8am to 5pm	Jul 14	MDP Academy
35665	Mon 8am to 5pm	Aug 18	MDP Academy

Security Officer Basic Training III. / \$ 140

/ 32 hrs / 3.2 CEUs

For people seeking employment as a commissioned, armed Texas security officer, in a curriculum established by the Texas DPS Private Security Bureau covering Level III training requirements, defensive tactics, and firearms training and qualifications. **Prerequisite:** Level II Certification.

Course **SDE 805.**

35666	Tue to Fri 8am to 5pm	Jun 10 to Jun 13	MDP Academy
35667	Tue to Fri 8am to 5pm	Jul 15 to Jul 18	MDP Academy
35668	Tue to Fri 8am to 5pm	Aug 19 to Aug 22	MDP Academy

In-Service Firearms Training for Security and Special Officers. / \$ 40 / 8 hrs / 0.8 CEUs

Satisfies the biennial realignments requirements, plus required updates established by the Texas DPS Private Security Bureau for Level III certification. **Students must present certification card.**

Course **SDE 204.**

35669	Wed 8am to 5pm	Jun 25	MDP Academy
35670	Wed 8am to 5pm	Jul 30	MDP Academy
35671	Wed 8am to 5pm	Aug 27	MDP Academy



Civilian Firearms Courses

Barry Bogle, Director. Call 915 **831-7122** for more information.

Introduction to Firearms Safety. / \$ 15

/ 7 hrs / 0.7 CEUs

Designed to provide the basic knowledge and skills necessary for a gun owner to safely handle firearms. Exposes students to safety at home and on the firing range, teaching laws pertaining to use of force, and developing proficiency with handguns on the firing range. **Prerequisites:** Must be at least 18 years of age. Taught at Mission Del Paso Law Enforcement Academy. Minimum of 14 years of age with parent or guardian enrolled in class.

Course **SDE 902.**

35672	Sat 9am to 4pm	Jun 7	MDP Academy
35673	Sat 9am to 4pm	Jul 5	MDP Academy
35674	Sat 9am to 4pm	Aug 2	MDP Academy

Firearms / Range Use. Open entry. / \$ 40 / 8 hrs

/ 0.8 CEUs

Range times for the general public. **Prerequisite:** weapon and ammunition must be provided by student. Mission Del Paso Law Enforcement Academy. Call 915 831-7118 for extra prerequisite information.

Course **SDE 206.** Equivalent to WECM course CJLE 1023.

Firearms / Range Use. Open entry. / \$ 60 / 40 hrs

/ 4.0 CEUs

Range time for the general public. **Prerequisite:** weapon and ammunition must be provided by student. Mission Del Paso Law Enforcement Academy. Call 915 831-7118 for extra prerequisite information.

Course **SDE 211.**

Civilian Practical Pistol. / \$ 40 / 8 hrs / 0.8 CEUs

The next step up in training from basic firearms proficiency, and not a fundamental class. Student should shoot proficiently. Must already understand the seven fundamentals of shooting and the four safety rules. Includes working on shooting skill, weapon presentation, and getting the gun on target in a practical situation. Should have taken SDE 902, Introduction to Firearms Safety.

Covered topics include

- * Weapons carrying options pros and cons.
- * Practical reloads under crisis conditions
- * Weapons malfunction drills under crisis conditions : fail to feed, fail to fire, stovepipe, double feed
- * Shooting controlled pairs
- * Shooting failure drills and
- * Shooting from cover

Course **SDE 310.**

35675	Sat 8am to 5pm	Jul 12	Mission Del Paso
-------	----------------	---------------	------------------

Women's Only Self Defense Course. / \$ 40

/ 8 hrs / 0.8 CEUs

Women of all ages can sharpen their situational awareness, attack recognition, attacker discouragement, and avoidance of dangerous encounters. Builds an understanding of the dynamics of an attack and how to respond -- and how and when to deploy OC spray and resist, avoid, and defend themselves.

Covered topics include

- * Understanding situational awareness and pre-encounter cues
- * Using verbal commands and other tools
- * Simple self-defense techniques and escapes
- * Deployment of Sabre pepper spray, and
- * Firearms safety and familiarization

Course **SDE 416.**

35676	Sat 9am to 5pm	Aug 23	Mission Del Paso
-------	----------------	---------------	------------------

LTC : License to Carry a Handgun. / \$ 80 /

8 hrs / 0.8 CEUs

Meets or exceeds all instructions and training requirements necessary for students to apply for a License to Carry in Texas. **Prerequisites :**

- 1 **Must be a legal Texas resident** for the six months before you apply
- 2 **Must be at least 21** years of age, or 18 if active military
- 3 **Must be qualified to purchase a handgun** under federal and state law
- 4 **Must not be a fugitive** from justice
- 5 **Must not have been convicted of a felony**, or under deferred adjudication, in the ten years before the date of application
- 6 **Must not be currently charged** with the commission of a Class A or B misdemeanor or equivalent offense
- 7 **Must not have been convicted** in the last five years of a Class A or Class B misdemeanor or equivalent offense
- 8 **Must not be chemically dependent**
- 9 **Must not be able to exercise sound judgment** with respect to firearms safety and proper storage
- 10 **Must not be determined to be delinquent in making child support** payments administered or collected by the attorney general
- 11 **Must not be determined to be delinquent in the payment of state or federal taxes**
- 12 **Must not be currently restricted under a protective order**, or subject to a restraining order, affecting the spousal relationship, other than a restricting order affecting property interests
- 13 **Must not make any material misrepresentation**, or fail to disclose any material fact, in application for a state-issued License to Carry Handgun
- 14 **Must have current Texas driver's license** or state identification card
- 15 **Must have Social Security card**
- 16 **Must have a handgun**, whether semi-automatic or revolver, and
- 17 **Must provide a minimum 50 rounds** of standard-only sporting arms ammunition; SAAMI may be used.

Please note :

- 1 **This is not a handgun training and development course.** You need to be sufficiently proficient with your handgun to pass the required qualification course of fire.
- 2 **If you need handgun training**, refer to the monthly course SDE 902, Introduction to Firearms Safety.
- 3 **There are 9mm firearms available** for use at the academy, for a small fee for cleaning and maintenance.
- 4 **You must provide a government-issued ID** (a driver's license, for instance) to check out a firearm for use on the Academy range.

Course **SDE 200.**

35677	Tue Wed 6 to 10pm	Jun 10 to Jun 11	MDP Academy
35678	Tue Wed 6 to 10pm	Jul 8 to Jul 9	MDP Academy
35679	Tue Wed 6 to 10pm	Aug 5 to Aug 6	MDP Academy
35680	Sat 8am to 5pm	Jun 28	MDP Academy
35681	Sat 8am to 5pm	Jul 26	MDP Academy
35682	Sat 8am to 5pm	Aug 30	MDP Academy



Motorcycle Rider Courses

Director Barry Bogle. For more information, call 915 **831-7005**.

You cannot register for these classes online.



Motorcycle Rider Course. / \$ 300 / 15 hrs

Learn the basic motorcycle skills to safely enjoy this sport. The Texas Department of Licensing and Registration, or TDLR, approved this 15-hour course, which includes classroom instruction and training on the motorcycle. Motorcycles are furnished free of charge. When you finish the course and show your certificate to TDLR, you'll get a class M license, which may entitle you to insurance company discounts. Students aged 15 to 17 must have 32 hours of proven driver education to take this course, and written permission from their parents and instructor. Call 915 831-7005 for dates and times.

Prerequisites :

- 1 You must have **the ability to ride a bicycle**.
- 2 You must **complete a 3-hour eCourse and print the certificate** completion before the first class day. An incomplete or failed eCourse is a failure for the entire course. Pick up your packet at LETA.
- 3 The rider must wear a **long sleeve shirt or jacket, long pants** with no holes, **over-ankle boots (no athletic shoes), eye protection and full-fingered gloves**. Bring a **sack lunch** and **2 bottles of water**.
- 4 Per TDPS rules, **if you arrive late you can't be admitted** to class.
- 5 If you are late to class or fail your eCourse, **you get no refund**.
- 6 You must provide your own Txdot-approved helmet so that all safety protocols are met.

Course **PLE 733**.

35683	Sat Sun 7am to 5pm	Jun 7 to Jun 8	MDP Riding Range
35684	Sat Sun 7am to 5pm	Jun 14 to Jun 15	MDP Riding Range
35685	Sat Sun 7am to 5pm	Jun 28 to Jun 29	MDP Riding Range
35686	Sat Sun 7am to 5pm	Jul 5 to Jul 6	MDP Riding Range
35687	Sat Sun 7am to 5pm	Jul 12 to Jul 13	MDP Riding Range
35689	Sat Sun 7am to 5pm	Jul 26 to Jul 27	MDP Riding Range
35690	Sat Sun 7am to 5pm	Aug 2 to Aug 3	MDP Riding Range
35691	Sat Sun 7am to 5pm	Aug 9 to Aug 10	MDP Riding Range
35692	Sat Sun 7am to 5pm	Aug 16 to Aug 17	MDP Riding Range
35693	Sat Sun 7am to 5pm	Aug 23 to Aug 24	MDP Riding Range
35694	Sat Sun 7am to 5pm	Aug 30 to Aug 31	MDP Riding Range

Classes in Spanish

35868	Sat Sun 7am to 5pm	Jul 19 to Jul 20	MDP Riding Range
-------	--------------------	-------------------------	------------------

Experienced Motorcycle Rider Course. / \$ 125 / 6 hrs

This course provides experienced motorcyclists with additional skills and knowledge which are often lacking in motorcycle accidents, and consists of six hours of hands-on training on the riding range. **Class limited to 8 students.**

Prerequisites :

- 1 You must use your own motorcycle or a motorcycle borrowed with written permission from the actual owner.
- 2 You must wear a Txdot-approved helmet with eye protection, a long sleeve shirt or jacket, long pants, over-the-ankle boots, **NO** athletic shoes, and full-fingered leather gloves.
- 3 You must show a valid driver's license, proof of insurance, and vehicle registration, and
- 4 You must have had six months of active riding.

Note : Contact the Training Academy at 915 831-7005 for additional information.

Course **PLE 743**.

28135	Sat 7am to 3pm	May 3	Mission Del Paso Riding Range
35695	Sat 7am to 3pm	Jun 7	MDP Riding Range
35696	Sat 7am to 3pm	Jul 5	MDP Riding Range
35697	Sat 7am to 3pm	Aug 2	MDP Riding Range

Three-Wheel Motorcycle Rider Course. / \$ 235 / 16 hrs

Learn the basic motorcycle skills necessary to safely enjoy the 3-wheel motorcycle. TDLR, the Texas Department of Licensing and Registration, approved this 16-hour course, which includes classroom instruction and driving training. Three Wheel Motorcycles are furnished without additional charge. Successful completion qualifies the student to obtain a 3-Wheel bike endorsement from TDLR and may also entitle you to insurance discounts. Students age 15 to 17 must show proof of 32 hours previous Driver Education training, before admission. Parental and instructor written permission is required to take the course. In Partnership with CAN-AM. Additional classes will be offered as needed. Call 915 **831-7005** for dates and times.

Prerequisites :

- 1 You must wear a Txdot-approved helmet, a long-sleeve shirt or jacket, long pants with no holes, over-the-ankle boots, **NO** athletic shoes, eye protection, and full-fingered leather gloves. Bring a sack lunch and 2 bottles of water.
- 2 Per TDPS rules, if you arrive late you can't be admitted to class.
- 3 If you are late to class or fail your eCourse, you get no refund.

Course **PLE 720**.

28136	Sat Sun 7am to 5pm	May 17 to May 18	Mission Del Paso Riding Range
35698	Sat Sun 7am to 5pm	Jun 21 to Jun 22	MDP Riding Range
35699	Sat Sun 7am to 5pm	Jul 19 to Jul 22	MDP Riding Range
35700	Sat Sun 7am to 5pm	Aug 16 to Aug 17	MDP Riding Range

Personal Enrichment

Leticia Guerra, Director.

Email iryanes@epcc.edu or rcabra12@epcc.edu or call 915 **831-6689** or **6687**. Go to epcc.edu/academics/continuingeducation to learn more about new course offerings.

You must be **17 years of age** to register in any of the Personal Enrichment Classes.

Home and Garden

Beginning Sewing. / \$ 130 / 18 hrs

Introduces the basic techniques of clothing construction and fitting. Learning this skill is for people who want to beat the high cost of quality clothing. Students make at least one garment in class, learn basic and commercial pattern fitting and adjustment. No previous knowledge of sewing is necessary. **Student purchase supplies.**

Course **PIA 545.**
35739 Mon Wed 6 to 9pm **Jun 9 to Jun 25** Valle Verde B-152

Intermediate Sewing. / \$ 130 / 18 hrs

Designed to further the sewing skills for those who know how to use the sewing machine and have had some sewing experience. There is some emphasis on time-saving techniques. First class meets for one hour. Bring sewing pattern, fabric, and tools to first class. **Prerequisite: PIA 545, Beginning Sewing.**

Course **PIA 558.**
35740 Mon Wed 6 to 9pm **Jul 7 to Jul 23** Valle Verde B-152

Basic American Quilting. / \$ 130 / 18 hrs

This course will teach students to create a simple item. Previous quilting experience is unnecessary, but you should know how to operate a sewing machine and to hand sew. First class meets for one hour.

Students purchase supplies. No class on July 5.
Course **PIA 786.**
35878 Sat 10am to 1pm **Jun 14 to Jul 26** Valle Verde B-152

Crochet. / \$ 85 / 12 hrs

This course is designed to introduce the student with the skills and techniques involved in the art of crochet.

Students purchase supplies.
Course **PIA 902.**
35879 Tue Thu 6 to 8pm **Jun 10 to Jun 26** Valle Verde B-152

Intermediate Crochet. / \$ 125 / 16 hrs

This course is designed to further develop the crochet skills and techniques learned in beginning crochet and give students the confidence to create more complex crochet items.

Students purchase supplies.
Course **PIA 933.**
35880 Tue Thu 6 to 8pm **Jul 15 to Aug 7** Valle Verde B-152

Home Gardening in El Paso. / \$ 100 / 16 hrs

Student will acquire information and learn techniques that will enable them to become successful gardeners under the challenging conditions posed by the El Paso climate. The course is taught by master gardeners. **No class on Jul 5.**

Course **PIA 477.**
35881 Sat 1030am to 1230pm **Jun 7 to Aug 2** Valle Verde B-150



Backyard Vegetable and Fruit Production. / \$ 70 / 16 hrs

The student will acquire information and learn techniques that will enable them to grow fresh fruit and vegetables in small spaces, whether in their yards, patios, or balconies. They will learn about plan selection and how to maximize harvest with limited space. The course is taught by master gardeners.

Course **PIA 513.**

35882	Thu 530 to 730pm	Jul 17 to Aug 7	Ascarate Annex, 301 Manny Martinez Dr Second Floor
-------	------------------	------------------------	--

Dog Behavior Class. / \$ 103 / 16 hrs

Build a better working relationship with your dog through the use of verbal commands and signals. All dogs should be 6 months and 4 years of age. Requirement: Do not bring dog to the first class, and **do not purchase any equipment before the class starts.** Instructor will explain what equipment is needed at first class. Dog owner must be 17 years of age or older. Certified American Kennel Club Instructor. All dogs must be vaccinated. Provide a contact phone number or email at time of registration.

No class on July 5.

Course **PIA 514.**

35741	Sat 830 to 1030am	Jun 14 to Aug 9	Valle Verde Patio
-------	-------------------	------------------------	-------------------

New / Embracing Self-Love and Acceptance a Journey to Personal Empowerment. / \$ 100 / 12 hrs

Explore the foundational concepts of self-love and acceptance with the expertise of a seasoned coach in self-love and relationships. Equip yourself with tools and strategies to cultivate a deep sense of self-acceptance, overcome limiting beliefs, and foster a stronger connection with yourself.

Course **PIA 934.**

35742	Mon 6 to 8pm	Jun 9 to Jul 14	Valle Verde A-2324
-------	--------------	------------------------	--------------------

New / Empowering Connections Relationship Enrichment Course for Couples. / \$ 100 / 12 hrs

Strengthen your relationship with our comprehensive course for couples. Gain practical tools to improve communication, resolve conflicts, and deepen intimacy at any stage of your relationship. Learn from an experienced coach in interactive exercises that foster collaboration and understanding.

Course **PIA 935.**

35743	Tue 6 to 8pm	Jul 15 to Aug 19	Valle Verde A-2324
-------	--------------	-------------------------	--------------------

New / Mastering Fashion E-Commerce : Affiliate Programs and Dropshipping Secrets. / \$ 100 / 12 hrs

Discover the secrets to fashion e-commerce in a course on affiliate programs and dropshipping. See advantages and challenges to both models and learn to leverage them for online store success. This course is your key to navigating the intricacies of the ever-evolving world of e-commerce.

Course **PIA 936.**

35744	Wed 6 to 8pm	Jun 18 to Jul 23	Valle Verde A-2324
-------	--------------	-------------------------	--------------------

Creative Arts

Drawing and Sketching for Beginners. / \$ 125 / 15 hrs

Discover the joy of drawing. Teaches you drawing basics through studies and still life, quick sketches, and exercise.

Students purchase supplies. No class on July 5.

Course **PIA 499.**

35745	Sat 9am to 12pm	Jun 14 to Jul 19	Valle Verde A-1326
-------	-----------------	-------------------------	--------------------

Watercolor Painting Techniques Part I. / \$ 125 / 15 hrs

Introduces watercolor techniques, basic art problem solving, and drawing to new as well as experienced artists. **Prerequisite :** PIA 499, Drawing and Sketching for Beginners. **Students purchase supplies.**

Course **PIA 498.**

35746	Sat 9am to noon	Jul 12 to Aug 9	Valle Verde A-1326
-------	-----------------	------------------------	--------------------

Watercolor Painting Techniques Part II. / \$ 125 / 15 hrs

Introduces watercolor techniques, basic art problem solving, and drawing to new as well as experienced artists. **Prerequisite :** PIA 499, Drawing and Sketching for Beginners. **Students purchase supplies.**

Course **PIA 791.**

35747	Mon Wed 6 to 9pm	Aug 11 to Aug 25	Valle Verde A-1326
-------	------------------	-------------------------	--------------------



Portrait Painting in Oil. / \$ 145 / 15 hrs

Learn the basics of drawing the human face, mixing the colors needed to create a portrait, and how to choose a photo that helps you create mood and portray personality in the portrait. **Pay for your own supplies.**

Course **PIA 506.**

35748	Thu 6 to 9pm	Jun 12 to Jul 10	Valle Verde A-1318
-------	--------------	-------------------------	--------------------

Oil Painting Principles and Techniques. / \$ 145 / 15 hrs

This class is designed to help students have a better understanding of how oil color works in order to create a greater visual impact.

Students purchase supplies.

Course **PIA 493.**

35749	Thu 6 to 9pm	Jul 24 to Aug 21	Valle Verde A-1318
-------	--------------	-------------------------	--------------------

Painting with Acrylics I. / \$ 120 / 12 hrs

Follow the instruction into the world of color. Learn the techniques of mixing different hues, applying paint onto the canvas, and achieving aerial perspective. **Students purchase supplies.**

Course **PIA 724.**

35750	Mon 6 to 8pm	Jun 9 to Jul 7	Valle Verde A-1318
-------	--------------	-----------------------	--------------------

Painting with Acrylics II. / \$ 120 / 12 hrs

A continuation of PIA 724, Painting with Acrylics I, that further develops your personal style, improves your color, composition and design skills, and fosters more advanced painting principles and techniques. **Prerequisite :** PIA 724, Painting with Acrylics I. **Students purchase supplies.**

Course **PIA 928.**

35751	Wed 6 to 9pm	Jul 23 to Aug 13	Valle Verde A-1318
-------	--------------	-------------------------	--------------------

New / Fundamentals of Digital Photography . / \$ 130

/ 16 hrs / 1.6 ceus

Welcome to the basics of digital photography! In this class, you will learn how cameras work, natural and artificial lighting, and composition of photographs, and the ability to unleash your creativity. Anyone from beginners to experienced professionals can participate and learn a variety of photography techniques through practice, and finding your own style. Share the joy of capturing beautiful moments! **Materials needed : Digital camera or mirrorless camera.**

Course **PIA 484.** Equivalent to WECM course PHTC 1004.

35752	Tue Thu 6 to 8pm	Jun 3 to Jun 26	Valle Verde B-163
-------	------------------	------------------------	-------------------

New / Intermediate Professional Photography.

/ \$ 130 / 16 hrs

Do you want to gain confidence in your photography ? This class takes your photography to the next level. You can develop your style and professional skills by choosing a photography course that will master the basics of photography required to use a camera. The course will present classes on topics across the spectrum of photography that provide hands-on instruction in the elements, composition, and framing most useful at the advanced photography level. **Materials needed : Digital camera or mirrorless camera.**

Course **PIA 511.**

35753	Tue Thu 6 to 8pm	Jul 1 to Jul 24	Valle Verde B-163
-------	------------------	------------------------	-------------------

New / Mastering Photoshop and Lightroom for

Photography. / \$ 135 / 20 hrs

This course is for those who want to learn the fundamentals of photo editing and retouching. By learning the basic functions and usage methods of Photoshop and Lightroom, you will learn the techniques to make your photos more attractive. Take your photos to the next level with Photoshop and Lightroom's powerful post-processing technology. The entire course is completed in a computer lab upgraded with the latest equipment. **Materials needed : 4-gigabyte USB flash drive or higher.**

Course **PIA 487.**

35754	Tue Thu 6 to 8pm	Jul 29 to Aug 28	Valle Verde B-163
-------	------------------	-------------------------	-------------------

How to Build or Upgrade your PC and Save Money.

/ \$ 70 / 8 hrs

Have you ever thought of building or upgrading your own personal computer? Yes, then this course is made for you. In this course you will learn how to build a new computer or upgrade your existing computer step by step.

Course **PIA 505.**

35755	Wed 6 to 8pm	Jul 30 to Aug 20	Valle Verde AST-120
-------	--------------	-------------------------	---------------------

■ Exploring the World of 3D Printing. / \$ 120 / 12 hrs

You'll be guided through the 3D printing process, exploring its potential as well as the limitations of this transformative technology. For hobbyist enthusiasts and those wanting to personalize objects, this offers a practical intro to 3D printing, requiring only basic computer skills and minimal prerequisites.

Course **PIA 517.**

35756	Tue Thu 6 to 8pm	Jul 8 to Jul 24	Admin Svc Ctr B-485
-------	------------------	------------------------	---------------------

Dance and Music

Latin Dance Made Easier. / \$ 70 / 10 hrs

Learn to dance any Latin dance easier and faster by practicing the five most important principles all good dancers share. You'll learn Timing, Connection, Redirection, Leading and Following, and Turn Preparation with easy-to-learn dance patterns from Salsa, Bachata, Cha-Cha-Cha, and Merengue. **No partner or dance experience required. Please wear tennis shoes. No class on July 5.**

Course **PID 428.**

35757	Sat 11am to 1pm	Jun 14 to Jul 19	Rio Grande J-703
-------	-----------------	-------------------------	------------------

Social Dancing for Everyone. / \$ 70 / 10 hrs

Have fun, music, and dancing in this class! Social dancing is a non-competitive kind of ballroom and Latin dancing. This class is for everyone that wants to dance. Learn practical steps and combinations use in practical settings like weddings, nightclubs, business functions, and informal dance events. **No partner required. Please wear tennis shoes. No class on July 5.**

Course **PID 429.**

35758	Sat 130 to 330pm	Jun 14 to Jul 19	Rio Grande J-703
-------	------------------	-------------------------	------------------

Salsa / Bachata I. / \$ 70 / 10 hrs

Quick and high energy Latin dance, like Salsa, can burn a substantial number of calories and increase blood circulation which is very beneficial to all of us. Bachata is a social dance that will help you with your posture, muscle toning, and coordination. A combination of both will provide you with the best overall health benefits. In this introductory class you will learn to dance Salsa and Bachata with the most popular Latin music in the comfort of your own home. **No partner required. Please wear tennis shoes.**

Course **PID 403.**

35759 Thu 630 to 830pm **Jun 26 to Jul 24** Valle Verde A-1215

Salsa / Bachata II. / \$ 70 / 10 hrs

Continuation of our very popular Salsa / Bachata class. This dance class is designed for anyone who wants to increase their Salsa, Bachata, Cha-Cha-Cha, and Merengue dance skills from beginner to intermediate. In this class you will learn intermediate Salsa, Bachata, Cha-Cha-Cha and Merengue dance patterns, movement redirection, dance synchronization, leading and following techniques, and dance etiquette with the most popular Latin music in a fun-filled environment. **No partner required. Please wear tennis shoes.**

Course **PID 427.**

35760 Sat 1 to 3pm **Aug 2 to Aug 30** Valle Verde A-1215

Two Step and More. / \$ 70 / 10 hrs Two step dance is a relatively simple dance form to learn. You will be introduced to the Two Step, East Coast Swing, El Paso, Four Corners, Boot Scootin Boogie, Charleston Bump, and related dance steps. Get your dancing shoes on! **No partner required. Please wear tennis shoes.**

Course **PID 410.**

35761 Thu 630 to 830pm **Jul 31 to Aug 28** Valle Verde A-1215

Party Line Dancing. / \$ 70 / 10 hrs

The simplicity of line dancing steps makes them so adaptable that they can be reworked and reused in a variety of different dances and styles. The steps are very basic and are often repeated numerous times in the line dance. Alpine, Cowboy, Arizona Shuffle, Bare Foot, Candida, and Country Cha-Cha are just a few dance steps that will be introduced. **Please wear tennis shoes.**

Course **PID 426.**

35762 Tue 630 to 830pm **Jun 10 to Jul 8** Transmountain 1405

Jazz Dance. / \$ 70 / 10 hrs

Learn some basics of the Bob Fosse swing jazz style, along with original choreography from the instructor. **Please wear tennis shoes.**

Course **PID 404.**

35763 Wed 630 to 830pm **Jun 11 to Jul 9** Valle Verde A-1215

Pop Dance. / \$ 70 / 10 hrs

Come together and dance along some of the latest hit songs that get you moving and grooving! **Please wear tennis shoes.**

Course **PID 407.**

35764 Tue 630 to 830pm **Jul 22 to Aug 19** Transmountain 1405

Contemporary Dance. / \$ 80 / 10 hrs

We'll move thru Bartenieff patterns to explore our kinespheres, and learn how to express ourselves with tools and techniques from artists such as Jose Limon, Isadora Duncan, Shen Wei, and Paul Taylor! **Please wear tennis shoes.**

Course **PID 412.**

35765 Wed 630 to 830pm **Jul 16 to Aug 13** Transmountain 1405



Voice Class. / \$ 105 / 16 hrs

Beginning voice study provides experience in using your singing voice. It emphasizes establishing good vocal tone production, breathing exercises, and fundamentals of music theory. Students perform a repertoire of varied styles.

Course **PIM 563.**

35768 Tue 6 to 8pm **Jun 17 to Aug 5** Valle Verde A-1201

Guitar I. / \$ 75 / 13.5 hrs

Have you ever dreamed of sitting by the fire and picking up an old guitar? Take this opportunity to learn the basic chord forms, simple melody lines, and musical notation. Soon you will play songs in folk and rock style.

Guitar required. No class on July 5.

Course **PIM 401.**

35769 Sat 9 to 1030am **Jun 14 to Aug 16** Valle Verde A-1126

Guitar II. / \$ 75 / 13.5 hrs

A continuation of Guitar I emphasizing technique, theory, chords, scales and repertory. Offers initial experience in playing the guitar, and establishing good music reading ability and rhythmic orientation. Introduces fundamentals of music theory and key technique. **Guitar required. No class on July 5.**

Course **PIM 417.**

35770 Sat 1035am to 1205pm **Jun 14 to Aug 16** Valle Verde A-1126

Piano for Adults I. / \$ 120 / 18 hrs

Beginning piano provides an initial experience in playing the piano. Emphasis is placed on establishing good music-reading ability and rhythmic orientation. Introduces the fundamentals of music, theory, and keyboards.

No class on July 5.

Course **PIM 400.**

35771 Sat 11am to 2pm **Jun 7 to Jul 19** Valle Verde A-1333

Piano for Adults II. / \$ 120 / 18 hrs

Each student will receive some individual attention and group instruction. Emphasis is placed on forming and maintaining good habits, reinforcement, basic musical theory and rhythmic orientation. **Prerequisite** : PIM 400, Piano for Adults I.

Course **PIM 405.**

35772	Sat 11am to 2pm Sat 8am to 2pm	Jul 26 to Aug 16 Aug 23	Valle Verde A-1333
-------	-----------------------------------	------------------------------------	--------------------

Culinary Arts

You must be 17 years old to take culinary arts courses at EPCC.

Mediterranean Cuisine. / \$ 158 / 21 hrs

Discover how to prepare Mediterranean dishes that will stimulate your palate. You will explore different ingredients that are used in Mediterranean cuisine. During a seven-week period, you will be able to identify the different flavors and the ingredients that you can use to create a dish. **No class** on Mar 10. **Student purchase supplies.**

Course **PIE 970.**

35773	Tue 6 to 9pm	Jun 9 to Jul 21	Valle Verde B-153
-------	--------------	------------------------	-------------------

Mexican Cuisine. / \$ 125 / 21 hrs

Authentic Mexican meals that are easily prepared, attractive and tasty. Discover the strategies for saving time, shopping efficiently, and blancing nutrition. **Students purchase supplies.**

Course **PIE 215.**

35781	Wed 6 to 9pm	Jun 11 to Jul 23	Valle Verde B-153
-------	--------------	-------------------------	-------------------

Baking from Scratch. / \$ 125 / 21 hrs / 2.1 CEUs

There's nothing like warm, fresh-baked goodies. Learn how to make healthy and delicious cakes, cookies, and breads. **Students will purchase their own supplies.**

Course **PIE 965.** Equivalent to WECM course PSTR 2000.

35775	Thu 6 to 9pm	Jul 17 to Aug 28	Valle Verde B-153
-------	--------------	-------------------------	-------------------

Asian Cuisine. / \$ 125 / 21 hrs

Learn different styles of Asian cooking from all over Asia. In this class students will feel like they are going on a tasting tour of Asia as they experience flavors from Thailand, China, Japan, Korea and other countries of Asia. **Students will purchase their own supplies.**

Course **PIE 007.**

35883	Tue 6 to 9pm	Jul 1 to Aug 12	Valle Verde B-153
--------------	--------------	------------------------	-------------------

Beginner's Cake Decorating. / \$ 145 / 20 hrs / 2.0 CEUs

You'll soon be proud of the cakes you decorate! Learn tip designs and how to make royal icing flowers. **Students will purchase their own supplies.** **No class on July 5.**

Course **PIE 967.** Equivalent to WECM course FCTR 1015.

35776	Sat 9am to 12 noon	Jun 7 to Jul 12	Valle Verde B-153
-------	--------------------	------------------------	-------------------

Advanced Cake Decorating. / \$ 145 / 20 hrs

In this course you'll improve the techniques from Level 1. You'll be introduced to fondant cakes and tier cakes, and you'll be learning new ways of how to work with chocolate on your cakes as well. **Students will purchase their own supplies.** **Prerequisite:** PIE 967 (Beginner's Cake Decorating).

Course **PIE 937.**

35777	Sat 9am to 12 noon	Jul 19 to Aug 16	Valle Verde B-153
-------	--------------------	-------------------------	-------------------

Healthy Meals on a Budget: Culinary Survival Skills.

/ \$ 150 / 21 hrs

This course equips students with practical cooking skills and strategies to maximize the use of pantry staples and other readily available food items. Includes food safety, basic meal prep, creative ways to use underutilized ingredients, and preparing diverse, budget-friendly meals. Participants will also learn about gardening options to supplement nutrition, and strategies for storing meals efficiently and preparing meals for the week ahead.

Course **PIE 897.**

35884	Wed 6 to 9pm	Jun 11 to Jul 23	Admin Svr Ctr B-234
-------	--------------	-------------------------	---------------------

New Age Coffee. / \$ 78 / 10 hrs

From classic morning drip to iced lattes, learn the many faces of coffee. Hot or iced, milk substitutes, homemade sweeteners, creamers, caffeine alternatives - any way you want it at no extra cost. **Students will purchase their supplies.**

Course **PIE 005.**

35778	Thu 6 to 8pm	Jun 12 to Jul 10	Valle Verde B-153
-------	--------------	-------------------------	-------------------

Mixology -- Basic Bartending. / \$ 80 / 12 hrs

Intro to the basics of bartending. You'll gain knowledge of the operations of a bar, the principal distilled beverages, and the major cordials. Emphasis on the proper methodology of mixing and serving cocktails and beverages. Flavored and colored water will substitute for alcohol. **Must be 21 years of age.**

Course **PIE 971.** Equivalent to WECM course RSTO 1010.

35779	Mon Wed 545 to 745pm	Jun 2 to Jun 18	Northwest C-226
-------	----------------------	------------------------	-----------------

Wine Appreciation. / \$ 100 / 12 hrs

Experience wine culture in its natural habitat -- restaurants. Expand your wine knowledge in this exciting informative course. Learn to pair food with wine, try new wines, and explore the culture of wine while dining at some of the finer restaurants in El Paso. First class meets at Wine Attitude. You must cover your own food costs. Class may meet at different locations. Intent of class is to meet at different restaurants. **Must be 21 years of age.**

Course **PIE 402.**

35780	Wed 6 to 8pm	Jul 9 to Aug 13	Wine Attitude, Sunland Park Mall, 2nd floor ste G-06
-------	--------------	------------------------	--

EPCC Partnered with ed2go

EPCC in Partnership with ed2go are offering these 6-week, online courses that will teach you professional skills, help you continue your education credit, or allow you to learn new hobbies.

The following are some examples of what is offered:

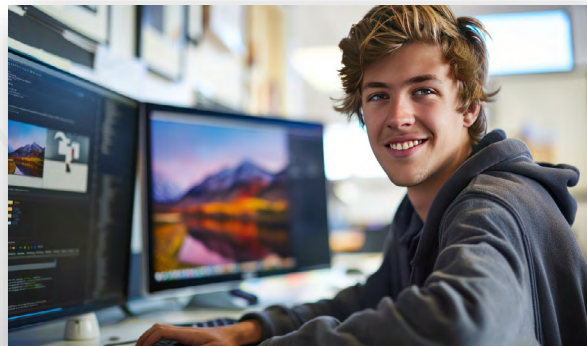
Fundamental Courses 24 Hrs.

Personal Development

- Beginning Writer's Workshop
- Conversational Japanese
- Discover Sign Language
- Introduction to Interior Design
- Leadership
- Speed Spanish
- Personal Finance
- Stocks, Bonds, and Investing: Oh, My!

Young Adult Courses (Ages 17+)

- Blogging & Podcasting for Beginners
- Creating Web Pages
- Drawing for the Absolute Beginner
- GED Preparation
- Grammar Refresher
- Instant Italian
- Mastering Public Speaking
- Mastering Your Digital SLR or Mirrorless Camera



**For many more courses and other pertinent information and details,*

please visit the Ed2go Online Catalog at www.ed2go.com/epcc/

or ed2go.support@cengage.com.

EPCC Employees: Staff Scholarship is available to pay for ED2GO online courses.

Need to reach out to m1erma14@epcc.edu at extension 6682.



Children's College

Melissa Sanchez, Manager. Email msanc201@epcc.edu or call 915 **831-6692** or **831-6678**.

Children's College is an opportunity for children to take classes in a college environment, and increases their awareness and understanding of a college education. **Note** : Children's courses have an age requirement. Go to epcc.edu/academics/continuingeducation to learn of our newest course offerings.

Academic Enrichment

Spanish for Kids. Grades 3 to 5. / \$ 95 / 12 hrs

Learn to communicate with your Spanish speaking neighbors! Kids learn basic Spanish phrases and words used in daily conversation. An excellent foundation for future language study. **No class** on Jul 5.

Course **PLD 823**.

35783 Sat 830 to 1030am **Jun 14 to Jul 19** Valle Verde B-100



■ CSI : Crime Scene Investigation for Children. Ages 8 to 12. / \$ 115 / 16 hrs

Children solve mysteries from clues left at imaginary crime scenes, in the role of investigator interpreting evidence as a team. You'll use the skills of a real CSI: photography, diagrams, fingerprints, shoe impressions, DNA. Includes final mock investigation and tour of EPPD Headquarters. **No class** on July 5.

Course **PLD 849**.

35784 Sat 11am to 1pm **Jun 28 to Aug 23** Valle Verde B-180

Black Rocket

These courses will offer the latest in cutting-edge technology and (STEM) courses that will enhance the learner's technology experience.

Python Programmers. Ages 11 to 14. / \$ 150 / 12.5 hrs

Want to learn the world's fastest-growing programming language used by Google, Nasa, YouTube, and the CIA? Learn to code in Python to create engaging apps and games. Fun lessons take you step-by-step into programming that lets you challenge friends with content you built from start to finish! Returning students create more advanced projects that build on prior years. Compatible with **Mac, Windows, and Chrome**. **No class** on July 5.

Course **PLD 619**.

35786 Sat 830 to 11am **Jun 7 to Jul 12** Valle Verde B-123

A. I. Adventures - Intro to Machine Learning Ages 8 to 11. / \$ 150 / 12.5 hrs

Explore the world of artificial intelligence to design fully interactive games and experiences using cutting-edge technology. This program combines artificial intelligence with coding to create an unforgettable learning adventure. Students will construct machine learning models that use image and text recognition within block-based coding software to build a portfolio of projects. Student-created projects will be available on a password-protected Black Rocket website to share with friends and family. Students work in pairs or teams for most of the program. **Compatible with Mac, Windows, Chrome OS**. **No class July 5**.

Course **PLD 676**.

35787 Sat 1130am to 2pm **Jun 7 to Jul 12** Valle Verde B-123

Roblox Coders. Ages 8 to 11. / \$ 150 / 12.5 hrs

Discover the Lua Language through a visual block coding system while designing worlds in Roblox, an online universe where you can create anything you dream of. This new class combines game design concepts, coding, and fun! Young entrepreneurs will also learn how to navigate Roblox's fast-growing marketplace to publish their games. Compatible with Mac and Windows OS only.

Course **PLD 694**.

35788 Sat 830 to 11am **Jul 19 to Aug 16** Valle Verde B-123

YouTube Content Creators. Ages 8 to 11. / \$ 150 / 12 hrs

Find your voice and leave your mark! Whether six or sixty, it's time to become the next YouTube star. Explore the variety of content and personalities on YouTube and how to find your own niche. Learn to practice good digital citizenship, and the platform's dos and don'ts. Develop professional editing skills, your on-camera presence, and branding your own channel. Plan to launch your channel with the content created in class! You need a webcam that's compatible with **Mac and Windows only**.

Course **PLD 659**.

35793 Sat 1130am to 130pm **Jul 19 to Aug 23** Valle Verde B-123

New Code Your Own Adventure! Interactive Storytelling. Ages 8 to 11. / \$ 150 / 12.5 hrs

Watch as the characters in your imagination come to life in this unique course that blends classic storytelling with animation techniques and coding. Start with a concept, design the characters, and choose not just one ending, but many! Learn how to create your own text-based adventure games with variable, conditional logic, images, HTML, CSS, and Twine scripting syntax. **No class on July 5**.

Course **PLD 781**.

35897 Sat 830 to 11am **Jun 7 to Jul 12** Valle Verde B164

New Young Game Designers. Ages 8 to 11. / \$ 150 / 12.5 hrs

This beginner game development course is designed to get elementary-aged students excited about technology through hands-on and engaging learning activities. Recreate classic video games while exploring level design and digital arts concepts. Experience child-friendly software while learning the game development process. **No class on July 5**.

Course **PLD 782**.

35898 Sat 1130am to 2pm **Jun 7 to Jul 12** Valle Verde B-163

Battle Royale Gamers. Ages 8 to 11. / \$ 150 / 12 hrs

Fans of Fortnite and Rumbleverse, we need you! Instead of just playing a multiplayer game, develop your own with Unity, a professional 3D game development software. Design your own unique magical level, build 3D models, and cast spells with custom-created wands. At the end of the week, all student-created maps are combined into a master game where you will battle to become the last wizard standing. Compete against other schools across the country in our Esports League, with the possibility of having your map included in the live game. **Compatible with Mac and Windows OS only**. **Requires a 64-bit operating system**.

Course **PLD 680**.

35790 Sat 830 to 1030am **July 19 to Aug 23** Valle Verde B-163

Young Investors & Entrepreneurs. Ages 11 to 14. / \$ 150
/ 12 hrs

Teach your kids the secrets of building financial wealth and security! Whether you want to build the next great American company, become a Wall Street tycoon, or be the millionaire next door by investing wisely - this course is for you! In this course you will learn the basics of investing in the stock market, the difference between assets and liabilities, the importance of diversification, and how to evaluate companies. You will also develop your own business plan and present your ideas to your peers to compete for their investments in a mock Shark Tank style activity. *This course requires access to computers with internet to complete market research.

Course **PLD 577.**

35791 Sat 11am to 1pm **Jul 19 to Aug 23** Valle Verde B-164

Snapology

These courses offer the use of technology, and take an active role in inspiring the next generation of scientists, engineers, and mathematicians through excitement in these concepts at an early age.

Amusement Park Engineering. Ages 7 to 12.

/ \$ 100 / 6 hrs

In Snapology's Amusement Park Engineering, students will become engineers of their own amusement park rides and will learn the core physics and engineering concepts used to make a ride thrilling!

Course **PLD 660.**

35858 Mon to Thu 9 to 1030am **Jun 23 to Jun 26** Valle Verde B-186

Kinder Bots. Grades K - 2nd.

/ \$ 110 / 6 hrs

Children begin to explore the world of robotics as they build simple models that teach the fundamentals of robotic design. Whether learning about sensors, building drills and magic wands, building helicopters and robotic dogs, or discovering ways that gears and pulleys create movement, every child is sure to have a great time.

Course **PLD 662.**

35859 Mon to Thu 1030 to noon **Jun 23 to Jun 26** Valle Verde B-186

35860 Mon to Thu 1030 to noon **Jul 7 to Jul 10** Valle Verde B-186

RoboPets. Entering Grades K-2nd / \$ 110 / 6 hrs

Children will begin to explore the world of robotics as they build moving animals that teach the fundamentals of robotic design. Whether learning about animal habitats or discovering ways that gears and pulleys create movement while building dancing birds and robotic dogs, your child is sure to have a great time.

Course **PLD 661.**

35861 Mon to Thu 1 to 230pm **Jun 23 to Jun 26** Valle Verde B-186

35862 Mon to Thu 1 to 230pm **Jul 7 to Jul 10** Valle Verde B-186

Minecraft Movie-Making. Entering Grades 2nd-5th / \$ 110

/ 6 hrs

In Snapology's Minecraft Movie-Making, students create an amazing Minecraft movie with stop motion animation using LEGO® bricks. Students will build a Minecraft world and go through the entire movie-making process with their filming partner, from plot development and set design to detailed visual and audio editing.

Course **PLD 642.**

35863 Mon to Thu 230 to 4pm **Jun 23 to Jun 26** Valle Verde B-186

35864 Mon to Thu 230 to 4pm **Jul 7 to Jul 10** Valle Verde B-186

Drone Commander. Entering Grades 4th to 8th / \$ 125

/ 6 hrs

In Snapology's Drone Commander Course, your student will be introduced to the world of Unmanned Aerial Vehicles (UAVs) and develop a deep understanding of how to control and manage this exciting technology. This class will give your student the opportunity to safely test out some of the newest advances in aerial flight and really take their knowledge of engineering to new heights!

Course **PLD 641.**

35865 Mon to Thu 4 to 530pm **Jun 23 to Jun 26** Valle Verde B-186

35866 Mon to Thu 4 to 530pm **Jul 7 to Jul 10** Valle Verde B-186

Arts

Young Artist Workshop. Ages 6 to 9.

/ \$ 95 / 12 hrs

Introduces basic drawing using a variety of materials. Learn about contrasting light and shadow, positive space, line and design. **Student will purchase supplies. No class on July 5.**

Course **PLD 776.**

35796 Sat 930 to 11am **Jun 14 to Aug 9** Valle Verde A-1318



Watercolor Painting for Kids. ages 8 to 10.

/ \$ 115 / 12 hrs

Basic techniques in painting with watercolor. Includes demonstration of creating landscape, seascape, and still life. **Student will purchase supplies. No class on July 5.**

Course **PLD 587.**

35797 Sat 1130am to 1pm **Jun 14 to Aug 9** Valle Verde A-1318

Sports and Fitness

Golf for Children. Ages 8 to 13. / \$ 70 / 6 hrs

Introduces the beginning golfer to golf swing fundamentals and various aspects of the game, including its rules and courtesies. Golf clubs not required. **Student will purchase range balls.**

Course **PLD 758.**

35798 Wed 630 to 8pm **Jun 4 to Jun 25** Ascarate Golf Course , 6900 Delta

Martial Arts for Young People. Ages 7 to 14.

/ \$ 70 / 8 hrs

An ancient Chinese martial art, Shaolin Kung Fu, builds self-esteem, providing you with a chance to improve fitness and self-defense awareness.

No class on July 5.

Course **PLD 880.**

35799 Sat 9 to 10am **Jun 21 to Aug 16** Valle Verde G-102

Advanced Martial Arts for Young People. Ages 7 to 14.

/ \$ 95 / 12 hrs

This advanced class continues teaching you basic Shaolin Kung Fu. Designed to build positive self-esteem and provide students with an opportunity to develop the skills necessary to improve fitness and self-defense awareness.

Prerequisite: PLD 880, Martial Arts for Young People. **No class on July 5.**

Course **PLD 921.**

35800 Sat 10 to 1130am **Jun 21 to Aug 16** Valle Verde G-102

American Boxing for Kids. Ages 8 to 12.

/ \$ 115 / 12 hrs

American boxing is an international sport referred to as the Sweet Science. Applying this art is as deep as the ocean, chess, and music. This class introduces the real version of the art as you develop not only authentic skills, but confidence, self esteem, and solid physical fitness. **No class on July 5.**

Course **PLD 863.**

35801 Sat 1130am to 1pm **Jun 21 to Aug 16** Valle Verde G-104

Performing Arts

Pre-Ballet. Ages 5 to 6. / \$ 70 / 8 hrs

'Look, Mommy -- see me dance!' Children who want to dance, but aren't yet ready for Ballet I, will glow with glee as they are introduced to balance and dance skills. **No class on July 5.**

Course **PLD 746.**

35802 Sat 9 to 10am **Jun 7 to Aug 2** Rio Grande J-703

Ballet I for Children. Ages 7 to 10. / \$ 70 / 8 hrs

Introduces beginning ballet and barre, and emphasizes proper body alignment and flexibility. **No class on July 5.**

Course **PLD 734.**

35803 Sat 10 to 11am **Jun 7 to Aug 2** Rio Grande J-703

Students registered in a piano class must buy a textbook and headphones. See course outline.

Piano I for Children. Ages 8 to 12. / \$ 110 / 9 hrs

Provides a positive, enjoyable group experience in the initial approach to playing the piano. Emphasizes establishing good music-reading ability and rhythmic orientation. Introduces the fundamentals of music theory and the keyboard. **No class on July 5.**

Course **PLD 724.**

35804 Sat 9 to 10am **Jun 14 to Aug 16** Valle Verde A-1333

Piano II for Children. Ages 8 to 12. / \$ 110 / 9 hrs

Continue piano studies with individual attention and group instruction, focusing on forming and maintaining good habits, basic musical theory, and rhythmic orientation. **Prerequisite:** PLD 724 , Piano I. **No class on Jul 5.**

Course **PLD 759.**

35805 Sat 10 to 11am **Jun 14 to Aug 16** Valle Verde A-1333

Guitar for Children. Ages 8 to 12. / \$ 70 / 8 hrs

Learn to play chord forms, simple melody lines and musical notation. For the beginner yearning to strum beyond a few chords. Provides you the basic technical competence for recreational use of the guitar. **Student Must have own guitar** -- a classical guitar with nylon strings. **No class on July 5.**

Course **PLD 721.**

35806 Sat 830 to 930am **Jun 28 to Aug 23** Valle Verde A-2117

Guitar II for Children. Ages 8 to 12. / \$ 70 / 8 hrs

A continuation of PLD 721, Guitar for Children, the course extends study of harmonic and sight reading skills and chords building. Technical goals include: independence of the fingers and chord building. **Student must have own guitar** -- a classical guitar with nylon strings. **Prerequisite:** PLD 721, Guitar for Children. **No class on Jul 5.**

Course **PLD 900.**

35807 Sat 930 to 1030am **Jun 28 to Aug 23** Valle Verde A-2116

Guitar for Teens. Ages 13 to 16. / \$ 99 / 12 hrs

Take this opportunity to learn the basic chord forms, simple melody lines and musical notation. Soon you will play songs in folk and rock style. **Student must have own guitar** -- a classical guitar with nylon strings. **No class on July 5.**

Course **PLD 891.**

35808 Sat 1030am to 12pm **Jun 28 to Aug 23** Valle Verde A-2117



Children's / Teen ESL Program

These English as a Second Language courses are for nonnative speakers, and include the vocabulary and reading skills needed for speaking English as a second language. **Student must purchase book at the Valle Verde bookstore.**

Los cursos de inglés como segundo idioma son para los estudiantes que no dominan el inglés. La instrucción incluíra vocabulario y habilidades de lectura necesarias para el éxito en la introducción a continuación en los cursos.
Compra tu propio libro en la librería Valle Verde.

ESL I for Children. Inglés como segundo idioma para niños I. Ages/edades 7 to 12. / \$ 93 / 12 hrs

No class on July 5.

Course / Curso **PLD 977.**

35810 Sat / Sab 1030am to 1230pm **Jun 14 to Jul 19** Valle Verde B-110

ESL I for Teens. Inglés como segundo idioma para adolescentes I. Ages/edades 12 to 16. / \$ 99 / 12 hrs

No class on July 5.

Course / Curso **PLD 984.**

35811 Sat / Sab 1230 to 230pm **Jun 14 to Jul 19** Valle Verde B-101

ESL II for Children. Inglés como segundo idioma para niños II. Ages/edades 7 to 12. / \$ 93 / 12 hrs

Prerequisite / Prerequisito: PLD 977, ESL I for Children / Inglés como segundo idioma para adolescentes.

Course / Curso **PLD 983.**

35812 Mon to Thu / Sab 830 to 1130am **Jul 21 to Jul 24** Valle Verde A-1121

ESL II for Teens. Inglés como segundo idioma para adolescentes II. Ages/edades 12 to 16. / \$ 99 / 12 hrs

Prerequisite / Prerequisito : PLD 984, ESL I for Teens / Inglés como segundo idioma para adolescentes.

Course / Curso **PLD 985.**

35813 Sat / Sab 1130am to 230pm **Jul 26 to Aug 16** Valle Verde B-108

ESL III for Children. Inglés como segundo idioma para niños III. Ages/edades 7 to 12. / \$ 105 / 12 hrs

Prerequisite / Prerequisito : PLD 983, ESL II for Children / Inglés como segundo idioma para niños.

Course / Curso **PLD 600.**

35814 Sat / Sab 830 to 1130am **Jul 26 to Aug 16** Valle Verde B-108

Weekday Class Offering

■ **Coding for Kids.** Entering Grades 4th to 8th.

/ \$ 90 / 10 hrs

Technology has a language. It's called code and we believe coding is an essential skill. Exploring fundamental coding concepts and practice thinking like coders using visual-based apps. Discovering how to code will help you solve problems and work together in creative ways. It will also help you build apps that bring your ideas to life.

Course **PLD-673.**

35867 Mon to Fri 10am to noon **Jun 9 to Jun 13** Valle Verde B-163

Make Your First Video Game. Ages 8 to 12.

/ \$ 90 / 10 hrs

Have you ever thought of an idea for a video game which does not exist? Now's your chance to join a class where you'll create an actual game. You'll use an easy-to-learn software to discover the basics of video game design.

Course **PLD 674.**

35817 Mon to Fri 1230 to 230pm **Jun 9 to Jun 13** Valle Verde B163

Junior Dog Obedience. Ages 8 to 12. / \$ 70 / 8 hrs

A certified American Kennel Club instructor shows kids how to build better relationships with their dogs by use and acceptance of verbal commands and signals. **Don't** bring your dog to the first class.

Course **PLD 785.**

35782 Tue Thu 830 to 930am **Jun 10 to Jul 3** Valle Verde Patio

Cooking for Kids. Ages 12 to 15. / \$ 95 / 12 hrs

Hey, kids! We can show you how fun and easy cooking can be. Learn to make delicious recipes, from main courses to desserts and snacks, with plenty of tasting along the way. Students will purchase supplies.

Course **PLD 997.**

35809 Mon to Thu 1 to 4pm **Jun 16 to Jun 19** Valle Verde B-153

Acrylic Painting for Kids. Ages 9 to 11. / \$ 75 / 8 hrs

The students will learn simple techniques in basic sketching to paint animals, flowers, still life, and a landscape, and will use art brushes and acrylic paint on a stretched canvas. We will finish a work of art in each class and recognize the different kinds of art. **Students will purchase supplies.**

Course **PLD 691.**

35815 Mon Wed Fri 930 to 1130am **Jul 14 to Jul 21** Valle Verde A-1326

Chefs in the Kitchen. Ages 10 to 12. / \$ 125 / 20 hrs

Students learn basic cooking skills, preparing new recipes and several favorites from past years. These recipes are great for kids and can be safely made with little help from adults. All recipes are EASY and FUN for kids to make at home too! **Students will purchase supplies.**

Note : Children with food allergies should not take this course.

Course **PLD 665.**

35816 Mon to Fri 1 to 5pm **Jul 14 to Jul 18** Valle Verde B-153

Math and Cooking. Grades 3rd - 5th

/ \$ 95 / 12 hrs

The kitchen has wonderful opportunities to help children learn math concepts like fractions, estimation and measuring quantities. Discover healthy foods and reinforce your math skills. **Student will purchase supplies.**

Course **PLD 618.**

35785 Mon to Thu 1 to 4pm **Jul 21 to Jul 24** Valle Verde B-153

Senior Adult Program

Blayne Primozych, AVP. Email sap@epcc.edu or call 915 **831-7801** for more information.

El Paso Community College provides a wide variety of free classes for people 55 years of age and over. **Seniors must register to attend classes.** When registering, show proof of age with driver's license, birth certificate, or other documents. Classes are held at community locations, city-county senior, nutrition, adult day care, and recreation centers, elderly housing complexes, retirement apartments, and all five EPCC campuses.

Online registration is available for returning students. Standard registration procedures apply for courses outside the Senior Adult program.

Go to epcc.edu for a step-by-step online Registration Guide, or find this information in the back of this Continuing Education schedule.

Arts

Acrylic Painting for Seniors. / free / 24 hrs

This course exposes students to necessary tools and materials to set up a layout for painting, apply techniques to different parts of a painting, mix colors, apply paint, and visualize perspectives. **No class** on June 19. **Student purchases supplies.**

Course **SAP 446.**

35498	Mon Wed 1 to 3pm	May 28 to July 7	Online
35499	Thu 12 to 3pm	May 29 to July 24	Eastside Sr Ctr



China Painting. / free / 24 hrs

Introduces students to the basic techniques of china painting. Students apply paint on porcelain materials and use firing techniques to fix the colors desired. **Student purchases supplies.**

Course **SAP 445.**

35500	Wed 9am to 12pm	May 28 to July 16	Valle Bajo Comm Ctr
-------	-----------------	--------------------------	---------------------

Drawing. / free / 24 hrs

Student will develop individual artworks and experiment with a variety of supports, papers, surfaces, and materials. Students will use pencil, charcoal, Micron pen, mix media is encouraged. This course is for students with an interest in expanding their experience in drawing. **Student purchases supplies. No class** July 4.

Course **SAP 117.**

35501	Fri 9am to 12 noon	May 30 to July 25	Admin Svc Ctr B-321
-------	--------------------	-------------------	---------------------

Portrait Painting. / free / 24 hrs

Draw a face in proportion, comprehending color mixing and working with the medium of your choice. Select photographs as reference material and work with oils, acrylics, watercolors, or colored pencils. The instructor works with you individually and collectively with handouts, class discussions, and demonstrations. **Students purchases supplies.**

Course **SAP 493.**

35502	Mon 9am to 12pm	Jun 2 to July 21	Admin Svc Ctr B-321
-------	-----------------	-------------------------	---------------------

Oil Painting for Seniors. / free / 24 hrs

This is a beginner-level class for seniors who want to learn how to paint. It introduces the basic techniques of painting in oil mediums, starting with the basics of drawing, to be able to do a simple sketch. We'll continue with basic knowledge in proportion, and overlap. **Student purchases supplies.**

No class on July 4.

Course **SAP 447.**

35503	Tue Fri 10am to 12pm	May 27 to July 8	Online
-------	----------------------	-------------------------	--------

Seniors Artistic Welding. / free / 24 hrs

Discover artistic welding techniques and produce a design through guided instruction using layout tools, demonstration, and guided practice. Learn plasma cutting and mig welding for a desired artistic product. **No class** on July 5. **Student purchases supplies and protective gear.**

Course **SAP 305.**

35504	Sat 8 to 10am	May 31 to Aug 23	Valle Verde ATC
-------	---------------	--------------------------------	-----------------

Computers

Digital Devices for Smart Seniors. / free / 24 hrs

In this intro course, seniors explore the various digital devices on the market. You'll bring your smart phones, iPads, and electronic notebook devices to class to learn their various uses and functions.

Course **SAP 615.**

35505	Tue Thu 1230 to 230pm	May 27 to July 3	Valle Verde B-123
-------	-----------------------	-------------------------	-------------------

Intro to Computers and Windows. / free / 24 hrs

Teaches the basic instruction to operate a personal computer. Learn how to use Windows, the mouse, screens, menus, and graphics. You'll be introduced to the terminology associated with Windows usage. **No class** on July 4.

Course **SAP 600.**

35506	Fri 1 to 3pm	May 30 to Aug 22	Valle Verde B-123
-------	--------------	--------------------------------	-------------------

Keyboarding on the Computer. / free / 24 hrs

Prepares you to use the computer keyboard, emphasizing techniques and training. You'll apply what you learn to complement your ability, as you master the mouse and personal computer.

Course **SAP 903.**

35507	Mon Wed 1 to 3pm	May 28 to July 7	Valle Verde B-123
-------	------------------	-------------------------	-------------------

Intro to MS Word. / free / 24 hrs

This introduces you to Microsoft Word, which makes professional documents like announcements, letters, resumes, and reports. You must have basic knowledge in using computers, and know how to type.

Course **SAP 670.**

35508	Tue 1 to 3pm	May 27 to Aug 12	Rio Grande B-509
-------	--------------	--------------------------------	------------------

MS Excel. / free / 24 hrs

Introduces Microsoft Excel, which creates and manipulates spreadsheets. You'll learn to organize and balance data in an understandable format. **Note :** We suggest you take SAP 600, Intro to Computers and Windows, before taking this class. **No class** on July 5.

Course **SAP 630.**

35509	Sat 9 to 11am	May 31 to Aug 23	Admin Svc Ctr B-320
-------	---------------	--------------------------------	---------------------

MS PowerPoint. / free / 24 hrs

Introduces you to the program PowerPoint, which creates professional presentations using the Microsoft Office interface. Learn its various tools to create your own slide show. **Note** : We suggest you take SAP 600, Intro to Computers and Windows, before taking this class.

Course **SAP 307.**

35510 Thu 1 to 3pm **May 29 to Aug 14** Rio Grande B-509

Seniors Exploring the Internet. / free / 24 hrs

Learn to access the World Wide Web network and become familiar with its many uses and applications. The instructor will help you communicate with people around the world. You must have some computer experience before taking this class.

No class on July 5.

Course **SAP 904.**

35511 Sat 1105am to 1pm **May 31 to Aug 23** Admin Svc Ctr B-320

Simple Steps for Using Technology. / free / 24 hrs

EPCC online classes require Microsoft Teams software. This course introduces the basics of Teams using simple step-by-step instructions. If you have little or no experience with technology, or using Teams, you'll gain enough knowledge and confidence to register for online courses.

Course **SAP 631.**

35512 Tue Thu 10am to 12pm **May 27 to July 3** Valle Verde B-123

Social Media. / free / 24 hrs

Introduces you to downloading, registering, and using social media platforms like Facebook, Instagram, Twitter, and Snapchat.

No class on July 5.

Course **SAP 476.**

35513 Sat 10am to 12pm **May 31 to Aug 23** Admin Svc Ctr B-322

Dance and Exercise

Ballroom Dance for Seniors. / free / 24 hrs

Teaches ballroom dance techniques and essential steps in dancing the Waltz, Fox Trot, Rhumba, and Jitterbug, to maintain an active, healthy body. Dances learned in class may be used in performance.

Course **SAP 470.**

35514 Mon Wed 1130am to 1230pm **May 28 to Aug 18** Eastside Rec Ctr

Chair Fitness +. / free / 24 hrs

Improving strength, flexibility, and balance are the keys to this invigorating, fun, and safe chair yoga course. A variety of specific exercises will target the upper and lower body to effectively strengthen and stretch all major muscles for improved balance and mobility. Breathing techniques help in performing exercises. **Bring your own home or low-cost equipment** : scarfs, face or kitchen towels, a cane, a 1-in wood dowel, light-to-moderate handheld weights, and stretch bands. Our goal is to achieve your own personal best.

Course **SAP 123.**

35515 Tue Thu 930 to 11am **May 27 to July 17** Admin Svc Ctr B-322

Exercise to Music. / free / 24 hrs

This maintains a regular low-impact program of exercise to music, to help you stay healthy and increase mobility. Positive group interaction and awareness of body movement improve your fitness level.

No class on June 19.

Course **SAP 403.**

35516 Tue Thu 9 to 10am **May 27 to Aug 19** Hilos de Plata Sr Ctr

Folklorico at 55. / free / 24 hrs

Offers seniors a low-impact dance program, familiarizing you with unique dances from various regions of Mexico. You'll learn about the customs, history of fandango dances, costumes, steps, techniques, and choreography that are traditional to each region of Mexico.

Course **SAP 430.**

35517 Tue 1015am to 1215pm **May 27 to Aug 12** Hilos de Plata Sr Ctr

Gentle Way Yoga. / free / 24 hrs

Yoga improves heart health through the mind, body and spirit, as well as flexibility, strength and concentration. Learn deep breathing, meditation, and relaxation techniques using chairs and assistive props. **No class** on July 5.

Course **SAP 109.**

35518 Sat 10am to 12pm **May 31 to Aug 23** Online

Latin Dance. / free / 24 hrs

Seniors learn dance floor techniques using popular Latin rhythms, adding smooth body movements, steps, and choreographed performance displays. Partners are recommended but not required. **No class** on July 4.

Course **SAP 303.**

35519 Fri 10am to 12pm **May 30 to Aug 22** Happiness Sr Ctr

Line Dance. / free / 24 hrs

Introduces older adults to popular and traditional individual line dancing, including country, Latin, and other rhythms offering both fun and exercise.

Course **SAP 455** / Beginners /

35520 Tue 930 to 1130am **May 27 to Aug 12** Transmountain 1405

35521 Tue 2 to 4pm **May 27 to Aug 12** David Ortiz Rec Ctr

35522 Mon 545 to 745pm **Jun 2 to Aug 18** Galatzan Rec Ctr

35523 Tue 1 to 2pm **May 27 to Aug 12** Eastside Sr Ctr

Course **SAP 455** / Intermediate **No class** Jun 19

35525 Tue 1030am to 1230pm **May 27 to Aug 12** Eastside Sr Ctr

35526 Mon Wed 1 to 2pm **May 28 to Aug 18** Eastside Rec Ctr

35527 Tue Thu 1230 to 130pm **May 27 to Aug 19** San Juan Sr Ctr

35528 Tue Thu 2 to 3pm **May 27 to Aug 19** Polly Harris Sr Ctr

Course **SAP 455** / Advanced **No class** Jun 19

35529 Tue Thu 12 to 1pm **May 27 to Aug 19** Sylvia Carreon Ctr

Call 915 **831-7801** or email sap@epcc.edu for class information.

Mexican Folk Dance. / free / 24 hrs

Course is designed to introduce students to the music, dance steps, choreography and complete dances from the States of Jalisco and Chiapas. Students will also learn about the background of traditional costumes common to each region and stage projection to highlight the cultural meaning.

No class on June 19.

Course **SAP 431.**

35530 Tue Thu 6 to 730pm **May 27 to July 22** Valle Bajo Comm Ctr

Qi Gong. / free / 24 hrs

You'll be introduced to the 12 stretching forms of Qi Gong, a mind-body-spirit practice that improves your mental and physical health, integrating posture movements, breathing techniques, self massage, sound, and focused intent. **No class** on July 4 and 5.

Course **SAP 302.**

35534 Fri Sat 615 to 715pm **May 30 to Aug 23** Online

■ Tai Chi for Seniors. / free / 24 hrs

Tai Chi -- slow, controlled movement and breathing techniques -- improves health, fitness level, ability to focus, balance, flexibility, coordination, stamina, strength, body posture, power, and endurance. Exercises emphasize a calm and peaceful mind. **No class** on July 4 and 5.

Course **SAP 300.**

35535 Fri Sat 5 to 6pm **May 30 to Aug 23** Online

Languages

■ Conversational Spanish for Beginners. / free / 24 hrs

Designed for senior adults who have minimal command of the Spanish language. This self-paced program focuses on learning the language with other students.

Course **SAP 415.**

35536 Wed 10am to 12pm **May 28 to Aug 13** Northwest C-212

ESL English as a Second Language. / free / 24 hrs

(Este curso de inglés está diseñado para adultos mayores con un dominio mínimo del idioma inglés. El curso básico tiene un tono motivacional y desarrolla su confianza en sí mismo para hablar el idioma inglés.)

This course is designed for older adults with minimal command of English. The basic course has a motivational tone and develops your self-confidence in speaking English. **No class** on July 4.

Course **SAP 425.**

35548 Fri 10am to 12pm **May 30 to Aug 22** South El Paso Sr Ctr

Music

Chorus. / free / 24 hrs

Offers group singing of songs in Spanish, creating a harmony of voices. Learn basic knowledge of the notes that highlight your musical abilities.

Course **SAP 435.**

35537 Tue 11am to 1pm **May 27 to Aug 12** Gary del Palacio
Rec Ctr

Guitar for Beginners. / free / 24 hrs

Learn the fundamentals of guitar playing, and new techniques of hand coordination in playing popular Mexican and American songs, basic rhythms, melodies, and chords. **No class** July 4. **Bring your own guitar.**

Course **SAP 420.**

35538 Fri 10am to 12pm **May 30 to Aug 22** Gary Del Palacio
Rec Ctr

Intermediate Guitar Rondalla. / free / 24 hrs

Lets you play guitar in a Rondalla-style playing and singing group, performing popular Mexican and American songs, and applying rhythm, guitar chords, and chorus techniques. **Must know how to play guitar.**

Course **SAP 486.**

35539 Mon 10am to 1pm **Jun 2 to July 21** San Juan Sr Ctr

Mariachi Course for Seniors. / free / 24 hrs

This course introduces advanced music students to techniques used in interpreting mariachi music from the regions in Mexico. Previous musical experience and proficiency with instrument required. Includes performances for special community events. **No class** on July 5. **Must know how to play guitar, trumpet, or violin.**

Course **SAP 421.**

35540 Sat 11 to 1pm **May 31 to Aug 23** Gary Del Palacio
Rec Ctr

Personal Enrichment

Beautifying Lives Through Makeup. / free / 24 hrs

This course helps students master important techniques in how to do their own makeup professionally. The student will learn to create contemporary looks for their everyday glamour. After completing this course, the student will be able to enhance their own or other women's beautiful features, disguise minor faults in one's appearance, and express themselves creatively.

Course **SAP 313.**

35541 Wed 9 to 11am **May 28 to Aug 13** Admin Svc Ctr B-322

Fashion Hair and Makeup. / free / 24 hrs

This course introduces students to basic hair care, nail care, accessories, wigs, and extension applications. The latest fashion trends and styles are discussed, to help students attend to their care and feel their best. Students will explore fashion styles, accessories, and hair options that complement their personalities while learning in a judgment-free environment. Join this amazing class and feel more confident and beautiful. **No class on July 4. Student purchases supplies.**

Course **SAP 119.**

35542 Fri 9 to 11am **May 30 to Aug 22** Admin Svc Ctr B-322

Wellness

Complementary and Alternative Therapies.

/ free / 24 hrs

This course will explain the concepts of complementary, alternative, and integrative medicine, including aromatherapy, ayurveda, traditional Chinese medicine, homeopathy, curanderismo herbal medicine, integrative and functional medicine, preventive nutrition, and natural supplements against oxidative stress as we age.

Course **SAP 310.**

35543 Mon Wed 530 to 730pm **May 28 to Jun 7** Transmountain 1124

Gardening for Healthy Living. / free / 24 hrs

This course is designed to teach seniors containerized gardening for the home. Students will cultivate a variety of interior plants from preparing the soil to planting the seed, watering, and growing healthy plants.

Student purchases supplies.

Course **SAP 106.**

35544 Tue 230 to 430pm **May 27 to Aug 12** Sylvia Carreon Ctr

Herbal Medicine. / free / 24 hrs

This course will answer questions about a variety of herbs, their differences, and their healing properties, and cover a plethora of herbs and supplements, including medicinal herbs used in our border area.

Course **SAP 311.**

35545 Tue Thu 530 to 730pm **May 27 to Jun 3** Transmountain 1125

Healthy Nutrition for Seniors. / free / 24 hrs

This course introduces older adults to the process of healthy meal planning menus and food preparation, which reduces health risks and fosters healthy nutrition. You'll work with the instructor as a team to prep, cook, and taste the menu assignments in class. Class lectures include traditional food preparation and optional tasty substitutes.

Student purchases supplies.

Course **SAP 251.**

35546 Mon Wed 12 to 2pm **May 28 to Jun 7** Valle Verde B-153

Meditation for Tranquility. / free / 24 hrs

Meditation is a mind - body practice with a long history of increasing calmness and physical relaxation, improving psychological balance, coping with illness, and enhancing overall health and well being. These practices focus on the interactions among the brain, mind, body, and behavior, to learn to meditate and explore the different forms and techniques used in various traditions.

Course **SAP 428.**

35547 Tue Thu 6 to 7pm **May 27 to Aug 14** Online

El Paso Community College campus locations

Administrative Services Center ASC, EPCC

915 **831-3722** / 9050 Viscount Blvd, El Paso 79925

Fort Bliss FT campus of EPCC

915 **831-5511** / 641 Taylor Rd, RM10, Fort Bliss 79916

Mission Del Paso MDP campus of EPCC

915 **831-3722** / 10700 Gateway East, El Paso 79927

Northwest NW campus of EPCC

915 **831-3722** / 6701 South Desert Rd, El Paso 79932

Rio Grande RG campus of EPCC

915 **831-3722** / 100 W Rio Grande Ave, El Paso 79902

Transmountain TM campus of EPCC

915 **831-3722** / 9570 Gateway Blvd N, El Paso 79924

Valle Verde VV campus of EPCC

915 **831-3722** / 919 Hunter Dr, El Paso 79915

Senior Centers

Eastside Regional Recreation Center, the Beast

915 **212-0580** / 13501 Jason Crandall Dr, El Paso 79938

Eastside Senior Center

915 **212-2070** / 3200 Fierro Dr, El Paso 79935

Galatzan Recreation Center

915 **212-0734** / 650 Wallenberg Dr, El Paso 79912

Gary Del Palacio Recreation Center

915 **212-0560** / 3001 Parkwood St, El Paso 79925

Happiness Senior Center

915 **212-0435** / 563 N Carolina Dr, El Paso 79915

Hilos De Plata Senior Center

915 **212-0410** / 4451 Delta Dr, El Paso 79905

Multipurpose Recreation Center

915 **212-2295** / 9031 Viscount Blvd, El Paso 79925

Officer David Ortiz Recreation Center

915 **212-0430** / 563 N Carolina Dr, El Paso 79915

Polly Harris Senior Center

915 **212-0733** / 650 Wallenberg Dr, El Paso 79912

San Juan Senior Center

915 **212-0486** / 5701 Tamburo Ct, El Paso 79905

Sylvia A Carreon Community Center

915 **212-0788** / 709 Lomita Dr, El Paso 79907

Valle Vajo Community Center

915 **212-0784** / 7380 Alameda, El Paso 79915

South El Paso Senior Center

915 **212-0574** / 600 Ochoa St, El Paso 79901



Summer 2025 Series starts:
Tuesday, May 6
Wednesday, May 7
Thursday, May 8
12:00pm – 2:00pm
LIVE WEBINAR

INTRODUCTION to QUICKBOOKS ONLINE

Tuesday, May 6, 2025

Introduction and Setup

Wednesday, May 7, 2025

Transactions and Bank Feed Introduction

Thursday, May 8, 2025

Advanced Features, Reports and Reconciliation

- **Registration Fee: \$175** – includes QuickBooks Online workbooks; 1-hour 1 on 1 session during series; and 1) 1-hour consultation any time after the series. Payment by American Express, Visa, MasterCard, and Discover is accepted. Check or money order payment payable to El Paso Community College. Register on-line at elpasosbdc.net. **Schedule is subject to change.**
- **Refunds:** A 100% refund will be processed if notification of drop is received 24 hours before the first-class meeting.
- **Location:** Classes are held on-line via Microsoft Teams



Proud Members of the Texas South-West SBDC Network



EL PASO
COMMUNITY
COLLEGE

INTRODUCTION to QUICKBOOKS ONLINE PAYROLL

2-Day Online Series

Wednesday, August 13

Thursday, August 14

12:00pm – 2:00pm

information and registration at
elpasosbdc.net

\$100 Registration Fee
includes: QBO Payroll workbooks,
1-hour consultation during and after series

Limited to 20 Students
Classes will be held on-line
via MicroSoft Teams

El Paso Community College
Small Business Development Center
9050 Viscount Blvd. Bldg. B. - #B520
El Paso, TX 79925



Mastering payroll in **QuickBooks Online Payroll** is essential for businesses to ensure accuracy, compliance, and efficiency in **managing employee wages and taxes.**

Whether you're new to payroll or looking to enhance your skills, this hands-on learning experience will help streamline payroll operations and **ensure accuracy** to keep your business on track.



Proud Members of the Texas South-West SBDC Network



Funded in part through the State of Texas and a Cooperative Agreement with the U.S. Small Business Administration. Reasonable accommodations for persons with disabilities or limited English proficiency will be made if requested at least two weeks in advance. Contact the SBDC at (915) 831-7742.

SMALL BUSINESS MANAGEMENT INSTITUTE



Tuesdays & Thursdays
September 9 – December 4
6:30pm – 8:30pm

elpasosbdc.net

The **Small Business Management Institute** provides entrepreneurs with the essential knowledge and skills needed to launch, operate, and grow a successful business. Participants gain expertise in strategic planning, operational efficiency, and management practices that drive growth and profitability. **SBMI** is designed to help business owners position their ventures for long-term success in a competitive market. Upon completing the course series, participants will receive a Small Business Management Completion Certificate, a credential valued by lenders and banking partners. The only entrance requirement is a minimum age of 17.

FALL 2025 Schedule

Sessions	Date (Tuesday & Thursday)
Introduction to Strategic Planning	September 9 & 11
Building a Strategic Plan	September 16 & 18
Introduction to Marketing	September 23 & 25
Developing a Marketing Action Plan	September 30 & October 2
Human Resources	October 7 & 9
Business and Contract Law	October 14 & 16
Administration and Accounting	October 21 & 23
Understanding Financial Statements	October 28 & 30
Analyzing Financial Statements	November 4 & 6
Forecasting and Break-Even Analysis	Wed., November 12 & Thurs., November 13
Financing the Business	November 18 & 20
Business Resources	December 2 & 4

REGISTER EARLY and SAVE \$20

- **Registration Fee: \$380** – before September 5, 2025; \$400 after September 5, 2025
- **Single Session Registration Fee: \$80 – Pre-registration is required.** Payment by Ar Express, Visa, MasterCard and Discover is accepted. Check or money order payment to El Paso Community College.

Register on-line at elpasosbdc.net. Schedule is subject to change.

- **Refunds:** A 100% refund will be processed if notification of drop is received 24 hours before first class.
- **Location:** Classes will be held in-person at the SBDC 9050 Viscount Blvd. Bldg B520



Proud Members of the Texas South-West SBDC Network

EPCC Language Institute

Lucy Flores, Manager. Email lflore60@epcc.edu or call 915 **831-2154** or 831-2748.

The mission of IEP, the Intensive English Program within the Language Institute, is to prepare students and professionals to acquire English proficiency to meet their personal, academic, and career goals. We are committed to offering classes delivered by highly qualified and competent faculty members in a dynamic and effective environment with the most innovative and supportive of resources.

The intermediate levels of IEP use terminology applicable to technical and business writing, to develop proofreading and editing skills relevant to job-related contexts required for advancement in the labor force. The emphasis is on enhancing effective written and oral communication skills for business applications in the workforce.

■ Intensive English Program : Fast Track

The program has six levels that can be completed within a year. Each level includes three courses: Reading / Writing, Listening / Speaking, and Grammar. Each has 200 hours of instruction per level.

Intensive English Programs : IEP AM & IEP SAT

The program has 12 levels offered on weekdays or Saturdays. Each level includes three courses: Reading / Writing, Listening / Speaking, and Grammar. Each has 100 hours of instruction per level.

Advanced Grammar & Advanced Writing and Conversation. / Online in sync.

Intended for ESL students who already have a solid foundation in the fundamentals of English. The courses are fast-paced for independent-learning, self-motivated and disciplined students who take charge of their learning with many independent-study activities outside class time. **Students must have completed IEP 262 or 162.**

Students must attend class at the assigned time, with their web camera and microphone turned on during class. Basic computer skills and knowledge are required, including the ability to use Microsoft Word, email applications, the Internet, and so forth.

Important information / Información importante

An IEP placement exam is needed to register. Call us to make an appointment for the exam. / **Examen de IEP** es necesario antes de inscribirse en cursos de inglés intensivo. Llama para hacer una cita para el examen.

Fast Track requires registration in two concurrent courses.

You must pay in full when you register, before the first class day; no full refunds for either course on or after the first day of the first class in each Fast Track level. / **Inscripción y pago de Fast Track es requerido en dos cursos simultáneos.** El pago completo es requerido para los dos cursos de cada nivel de Fast Track antes del primer día de clase, no hay reembolso completo para cualquier de los dos cursos en el primer o después del primer día de clases del primer curso.

You must pay in full when you register. Registration for summer begins May 5, 2025. The last day to register is the Friday before the first day of classes, if space is available. / **El pago completo es requerido** al momento de la inscripción. Inscripción para clases del ciclo de primavera inicia el 5 de Mayo del 2025. Último día de inscripción es el viernes previo al primer día de clases; si hay cupo.

EPCC's refund policy details appear under General Information in this schedule of classes. / **Requisitos de reembolso** : Información en la Sección General de este horario de clases.

The IEP is full immersion. Only the target language is spoken in class. / **El programa de inglés intensivo es de inmersión total.** Solo se habla el idioma inglés en las clases.

IEP Fast Track. Classes in person.

/ 200 hrs / 20 ceus

Cycle I is June 23 to August 8, 2025

Full payment is required at time of registration.

(**El pago completo** es requerido al momento de la inscripción. Se requiere forma de inscripción del Language Institute para inscribirse.)

A registration referral form from the Language Institute is required to enroll in classes.

(**Se requiere forma de inscripción** del Language Institute para inscribirse.)

No classes on July 4, 2025.

Fast Track English I, A and B. / \$ 554

Courses **IEP 211** and **212**.

35476, 35477 Mon to Fri 8am to 230pm **Jun 23 to Aug 8** Valle Verde MV 14

Fast Track English II, A and B. / \$ 554

Courses **IEP 221** and **222**.

35478, 35479 Mon to Fri 8am to 230pm **Jun 23 to Aug 8** Valle Verde MV 16

Fast Track English III, A and B. / \$ 554

Courses **IEP 231** and **232**. Equivalent to WECM courses COMG 1000 and 1001.

35480, 35481 Mon to Fri 8am to 230pm **Jun 23 to Aug 8** Valle Verde MV 17

Fast Track English IV, A and B. / \$ 554

Courses **IEP 241** and **242**. Equivalent to WECM courses COMG 1004 and 1004.

35482, 35483 Mon to Fri 8am to 230pm **Jun 23 to Aug 8** Valle Verde MV 18

Fast Track V, A and B. / \$ 554

Course **IEP 251** and **252**.

35484, 35485 Mon to Fri 8am to 230pm **Jun 23 to Aug 8** Valle Verde MV 19

Fast Track English VI, A & B. / \$ 554

Course **IEP 261** and **262**.

35486, 35487 Mon to Fri 8am to 230pm **Jun 23 to Aug 8** Valle Verde MV 20

IEP AM. Classes in person.
/ 100 hrs / 10 ceus / Cycle I

Full payment is required at time of registration. / **El pago completo** es requerido al momento de la inscripción. Se requiere forma de inscripción del Language Institute para inscribirse.

A registration referral form from the Language Institute is required to enroll in classes. / **Se requiere forma de inscripción** del Language Institute para inscribirse.



Cycle I : June 23 to August 8, 2025

No classes on July 4, 2025.

Intensive English I-B. / \$ 277

Course **IEP 112.**

35488 Mon to Fri 9 to 1150am **Jun 23 to Aug 8** Valle Verde MV 21

Intensive English II-B. / \$ 277

Course **IEP 122.**

35489 Mon to Fri 9 to 1150am **Jun 23 to Aug 8** Valle Verde MV 22

Intensive English III-A. / \$ 277

Course **IEP 131.** Equivalent to WECM course COMG 1000.

35491 Mon to Fri 9 to 1150am **Jun 23 to Aug 8** Valle Verde MV 30A

Intensive English III-B. / \$ 277

Course **IEP 132.** Equivalent to WECM course COMG 1001.

35492 Mon to Fri 9 to 1150am **Jun 23 to Aug 8** Valle Verde MV 24

Intensive English IV-B. / \$ 277

Course **IEP 142.** Equivalent to WECM course COMG 1004.

35493 Mon to Fri 9 to 1150am **Jun 23 to Aug 8** Valle Verde MV 29

Intensive English V-B. / \$ 277

Course **IEP 152.**

35495 Mon to Fri 9 to 1150am **Jun 23 to Aug 8** Valle Verde A-1101

Intensive English VI-B. / \$ 277

Course **IEP 162.**

35496 Mon to Fri 9 to 1150am **Jun 23 to Aug 8** Valle Verde MV 31B

Conversation ESL Program. Classes in person.
/ \$ 150 / 50 hrs / 5 CEUs / Cycle I

The 50-hour Conversation ESL course of study is designed to advance the oral English skills of students in the workplace. These classes aim to improve pronunciation and the use of idiomatic expressions, and emphasize communication and formal presentations.

Full payment is required at time of registration. / **El pago completo** es requerido al momento de la inscripción. Se requiere forma de inscripción del Language Institute para inscribirse.

A registration referral form from the Language Institute is required to enroll in classes. / **Se requiere forma de inscripción** del Language Institute para inscribirse.

Cycle I : May 17 to August 9, 2025

Conversation ESL I. / \$ 150

Course **IEP 501.**

28075 Sat 9 to 1250pm **May 17 to Aug 9** Valle Verde MV

Conversation ESL II. / \$ 150

Course **IEP 502.**

28076 Sat 9 to 1250pm **May 17 to Aug 9** Valle Verde A-1319

Conversation ESL III. / \$ 150

Course **IEP 503.**

28077 Sat 9 to 1250pm **May 17 to Aug 9** Valle Verde A-1118

Conversation ESL IV. / \$ 150

Course **IEP 504.**

28078 Sat 9 to 1250pm **May 17 to Aug 9** Valle Verde A-1130

Conversation ESL V. / \$ 150

Course **IEP 505.**

28079 Sat 9 to 1250pm **May 17 to Aug 9** Valle Verde A-2121

Conversation ESL VI. / \$ 150

Course **IEP 506.**

28080 Sat 9 to 1250pm **May 17 to Aug 9** Valle Verde A-1131

Advanced Conversational ESL.

Online in synch. / **\$ 150** / 36 hrs / 3.6 ceus

Note : Students must have completed level IEP 262 / 162.

Course **ALP 507.**

Mon Wed 6 to 730pm

Online

CE Language Programs.

Online in synch or in person. / **\$ 150** / 48 hrs / 4.8 ceus

Learn another language at the EPCC Language Institute. These affordable, non-credit Spanish, German, and French classes are offered under Continuing Education, and are concurrent with credit courses.

Please contact the Language Institute at LI@epcc.edu for the summer classes schedule.

Center for Corporate and Workforce Training

Jose CassoLopez, Director. Email ccwt@epcc.edu or call 915 831-7825 or 7840 for more information on these courses.

Corporate and Workforce Trainings

CCWT develops and delivers up-to-date and convenient innovative and accessible programs to meet the vocational and professional needs of individuals and businesses in the El Paso region. CCWT can customize curriculum that can be delivered on- or off-site to your employees, with flexible schedules.

Customs Brokerage. / \$ 75 / 8 hrs / 0.8 CEUs

This course will provide logistics associates with an understanding of how to complete and ensure that import / export documentation for US and Mexico customs is accurate. Provides a foundation of knowledge including protocol, customs, etiquette, verbal and nonverbal communications.

Course **CWT 603**. Equivalent to WECM course IBUS 2001.

35701	Sat 8am to 12pm	Jun 14 to Jun21	Admin Svc Ctr B-480
35702	Sat 8am to 12pm	Aug 9 to Aug 16	Admin Svc Ctr B-480

Corporate Communication. / \$ 200 / 24 hrs / 2.4 CEUs

This course will focus on three aspects of corporate communication: grammar, professional writing, and presentations.

Course **CWT 402**. Equivalent to WECM course POFT 1012.

35703	Mon Wed 530 to 830pm	Jun 2 to Jun 25	Admin Svc Ctr B-555
35704	Sat 9am to 1pm	July 12 to Aug 16	Admin Svc Ctr B-555

Note. If not enough students register for a class, it will be canceled. You will be reimbursed within a two week period.

Institute for Customer Service Excellence Southwest Region

The Institute will provide participants the opportunity to test for the Retail Industry Fundamentals Specialist, Customer Service and Sales Certified Specialist, and Business of Retail Certified Specialist through the National Retail Federation Foundation RiseUP.

The Institute can also customize customer service workshops tailored to meet business and industry needs. The following courses are provided by the Institute :

Introduction to Customer Service.

/ \$ 200 / 24 hrs / 2.4 CEUs

This course is designed to provide an introduction to the process of providing excellent customer service. The course will prepare the students to provide excellent customer service in the areas of employment they enter including but not limited to the retail industry. It includes the recognition of the customer base and identification and fulfillment of customer needs.

No class on July 5.

Course **CWT 400**. Equivalent to WECM course BUSG 1005.

35705	Tue Thu 530 to 830pm	Jun 10 to Jul 3	Admin Svc Ctr B-556
35706	Sat 9am to 1pm	Jun 21 to Aug 2	Admin Svc Ctr B-556

Enhancing Your Customer Service Skills.

/ \$ 75 / 8 hrs / 0.8 CEUs

This course presents the foundation required for developing skills and knowledge to work effectively with internal and external customers. It is designed to help customer service staff to be the best they possibly can be for their organization. At the conclusion, participants will have an understanding of what makes an excellent customer service experience, how to deliver excellent customer service over the telephone, and how to deal with a difficult customer. This course can be customized to business and/industry needs.

Course **CWT 401**. Equivalent to WECM course BUSG 1005.

35707	Mon Wed 530 to 730pm	Jul 14 to Jul 23	Admin Svc Ctr B-556
35708	Sat 9am to 1pm	Aug 9 to Aug 16	Admin Svc Ctr B-556

Automotive Technology

Auto Mechanics / Non-Mechanics.

/ \$ 170 / 20 hrs / 2.0 CEUs

Learn basic automotive technical skills. These skills will assist you in identifying mechanical problems, making minor repairs, and preventive maintenance such as changing oil and transmission filters.

No class on July 5.

Course **CWT 101**. Equivalent to WECM course AUMT 1091.

35709	Sat 1 to 5pm	Jun 7 to Jul 12	Valle Verde TTC-159
-------	--------------	-------------------------------	---------------------

Fundamentals of Brake Systems.

/ \$ 170 / 20 hrs / 2.0 CEUs

This course introduces the basics of brake systems to includes topics on the diagnosis, anti-lock brake systems, and parking brakes. These concepts are taught through a series of class discussions and hands-on applications.

Course **CWT 102**. Equivalent to WECM course DEMR 1015.

35710	Sat 1 to 5pm	Jul 19 to Aug 16	Valle Verde TTC-159
-------	--------------	--------------------------------	---------------------

Motorcycle Repair. / \$ 135 / 20 hrs / 2.0 CEUs

Participants will learn how to properly service, repair and maintain motorcycles. This study of the components will include shocks, tires, wheels, drive chains, cables, clutches, valve adjustments, timing chain service, fuel systems service, and ignition system testing. Emphasis will be placed on individual projects. Students are responsible for purchasing any required parts for their motorcycle. If you have any questions, please call 915 831-7756.

No class on Apr 19.

Course **CWT 100**. Equivalent to WECM course MRTC 1091.

35711	Sat 1 to 5pm	Jul 12 to Aug 9	Valle Verde TTC
-------	--------------	-------------------------------	-----------------

Note. If not enough students register for a class, it will be canceled. You will be reimbursed within a two week period.

Auto Collision and Repair

The Auto Collision and Repair Program will prepare you with the basic technical knowledge and skills for the auto collision and repair industry. You will receive hands-on training from instructors credentialed by I-CAR.

Shop Safety and Procedures. / \$ 175 / 20 hrs / 2.0 CEUs

Participants will learn the basic knowledge of shop safety, shop tools, test equipment, and service tools. Instruction will occur in both a classroom and a field-laboratory setting.

Course **CWT 112**. Equivalent to WECM course DEMR 1000.

35712	Mon to Thu 530 to 930pm	Jun 2 to Jun 9	Valle Verde TTC-159
-------	-------------------------	------------------------------	---------------------

Basic Metal Repair.

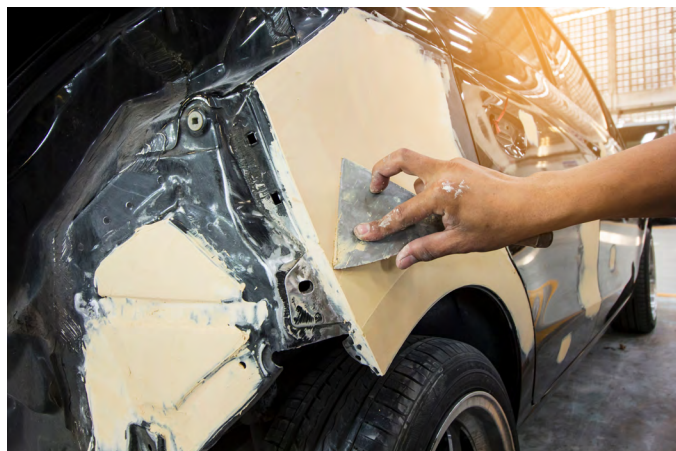
/ \$ 263 / 30 hrs / 3.0 CEUs

This course is an introduction of basic current metal work techniques, product application, and skill development utilizing various auto body features including metal principles. The student will perform basic metal straightening procedures, utilize basic body-shop hand tools, and utilize appropriate plastic filler application techniques. **No class** on July 5.

Course **CWT 113**. Equivalent to WECM course ABDR 1091.

35713 Mon to Thu 530 to 930pm **Jun 10 to Jun 23** Valle Verde TTC-159

35714 Sat 8am to noon **May 31 to Jul 26** Valle Verde TTC-159



Basic Refinishing.

/ \$ 263 / 30 hrs / 3.0 CEUs

This course is an introduction to current refinishing products, shop safety, and equipment used in the automotive refinishing industry. Emphasis on surface preparation, masking techniques, and refinishing of replacement parts.

Course **CWT 114**. Equivalent to WECM course ABDR 1091.

35715 Mon to Thu 530 to 930pm **Jun 24 to Jul 7** Valle Verde TTC-159

35877 Sat 1 to 5pm **May 31 to Jul 26** Valle Verde TTC

Vehicle Trim and Hardware.

/ \$ 175 / 20 hrs / 2.0 CEUs

This course will instructs the student in proper use and selection of tools, removing and installing interior door trim panels, and removing and installing door locks and handles. How to properly remove and install deck lid lock cylinders, install pinstripes, decals, and remove and install exterior trim.

Course **CWT 115**.

35716 Mon to Thu 530 to 930pm **Jul 8 to Jul 15** Valle Verde TTC-159

■ Auto Body Repair and Repainting.

/ \$ 175 / 20 hrs / 2.0 CEUs

This course introduces the use of hand and power tools, metalworking techniques, body preparation, plastic fillers, fiberglass, SMC repair, sanding, and application of primers, emphasizing shop safety practices.

Course **CWT 116**.

35717 Mon to Thu 530 to 930pm **Jul 16 to Jul 23** Valle Verde TTC-159

Vehicle Design and Structural Analysis.

/ \$ 175 / 20 hrs / 2.0 CEUs

This course is an introduction to the collision repair industry, and emphasizes safety, professionalism, and vehicle structural design. It explains the methods to determine collision damages to an automotive chassis and suspension components for conventional framed and unitized vehicles.

Course **CWT 117**.

35718 Mon to Thu 530 to 930pm **Jul 24 to Jul 31** Valle Verde TTC-159

Automotive Plastic and Sheet Molding Compound Repair.

/ \$ 175 / 20 hrs / 2.0 CEUs

This is a comprehensive course in the repair of interior and exterior plastics, including various types of plastic welding and adhesives. Instruction will occur in a classroom and field-laboratory setting.

Course **CWT 118**.

35719 Mon to Thu 530 to 930pm **Aug 4 to Aug 11** Valle Verde TTC-159

Note. If not enough students register for a class, it will be canceled. You will be reimbursed within a two week period.

Electrical Technology

Conc indicates a concurrent course open to both degree-plan and CE students. It is limited to age 17 or older. See page 53.

Motors and Controls.

/ \$ 459 / 64 hrs / 6.4 CEUs

Study of the operating principles of solid-waste and conventional controls along with their practical applications. Topics include braking, jogging, plugging, safety interlocks, wiring, and schematic diagram interpretations. A study of electric motors and motor control devices common to modern industrial environment. A presentation of motor characteristics with emphasis on starting, speed control, and stopping systems.

Course **CCW 301**. Equivalent to WECM course ELPT 1341.

Conc 35720 Tue Thu 8 to 950am **Jun 10 to Jul 31** Valle Verde ATC-216
(Lab Tue Thu 10 to 1150am)

Conc 35721 Tue Thu 6 to 750pm **Jun 10 to Jul 31** Valle Verde ATC-216
(Lab Tue Thu 8 to 950pm)

Electrical Troubleshooting.

/ \$ 459 / 64 hrs / 6.4 CEUs

Introduction in the maintenance, theory of operation, troubleshooting and repair of circuits of various residential, commercial, and industrial electrical systems. Analysis of electrical and electronic circuits and equipment, using various types of test equipment. Problem correct including replacement of defective parts.

Course **CCW 306**. Equivalent to WECM course ELNT 1343.

Conc 35722 Mon Wed 8 to 950am **Jun 9 to Jul 30** Valle Verde ATC-219
(Lab Mon Wed 10 to 1150am)

Conc 35723 Mon Wed 8 to 950am **Jun 9 to Jul 30** Valle Verde ATC-219
(Lab Mon Wed 10 to 1150am)

Conc 35724 Tue Thu 6 to 750pm **Jun 10 to Jul 31** Valle Verde ATC-219
(Lab Tue Thu 8 to 950pm)

Conc 35725 Mon Wed 6 to 750pm **Jun 9 to Jul 31** Valle Verde ATC-219
(Lab Mon Wed 8 to 950pm)

National Electrical Codes I.

/ \$ 509 / 64 hrs / 6.4 CEUs

This course focuses on safety procedures, requirements for building electrical systems, fire codes, lighting distribution, power sources, alarm systems, and interior and exterior communication systems.

Course **CCW 310**. Equivalent to WECM course ELPT 1325.

Conc 35726 Tue Thui 8 to 950am **Jun 9 to Aug 1** Valle Verde ATC-216
(Lab Tue Thu 10 to 1150am)

Conc 35727 Tue Thu 8 to 950am **Jun 9 to Aug 1** Valle Verde ATC-216
(Lab Tue Thu 10 to 1150am)

Conc 35728 Mon Wed Fri 6 to 750pm **Jun 9 to Aug 1** Valle Verde ATC-219
(Lab Mon Wed Fri 8 to 950pm)

Conc 35729 Tue Thu 6 to 750pm **Jun 10 to Jul 31** Valle Verde ATC-219
(Lab Tue Thu 8 to 950pm)

Fundamentals of Electricity II.

/ \$ 459 / 64hrs / 6.4 CEUs

An introduction to alternating current (AC) including Ohm's Law. Topics include AC voltage, frequency, mechanical and electrical degrees, waveforms, resistors, capacitors, and inductors. Theory and application of electrical energy with emphasis on industrial and commercial systems. Includes AC and DC theory, electrical generation transmission, distribution and switching and single phase and three motor principles.

Course **CCW 303**. Equivalent to WECM course ELPT 1320.

Conc 35730 Mon Wed 8 to 950am **Jun 9 to Jul 30** Valle Verde ATC 216
(Lab Mon Wed 10 to 1150am)

Conc 35731 Mon Wed 6 to 750pm **Jun 9 to Jul 30** Valle Verde ATC 216
(Lab Mon Wed 8 to 950pm)

Construction Technology

■ Blueprint Reading for Construction.

/ \$ 263 / 30 hrs / 3.0 CEUs

Provides you with the tools and methodology for interpretation of blueprints in the building-construction industry. Course covers reading, interpretation, and application of symbols, graphic language, and terminology used in the construction industry by building trades.

Course **CWT 501**.

35732 Mon Wed 6 to 9pm **Jun 2 to Jul 2** Admin Svc Ctr B-585

Construction Cost Estimating.

/ \$ 263 / 30 hrs / 3.0 CEUs

This introductory course presents an overview for cost estimating of building construction, reviews pre-bid procedures, material surveys, pricing, and bid closeout.

Course **CWT 502**.

35733 Mon Wed 6 to 9pm **Jul 7 to Aug 6** Admin Svc Ctr B-480

Introduction to Home Electrical.

/ \$ 155 / 10 hrs / 1.0 CEUs

This course provides a foundational understanding of residential electrical systems. It covers essential topics such as safety, basic electrical theory, common home wiring, troubleshooting, and repairs. The course is designed for homeowners and aspiring electricians who wish to gain practical knowledge and skills.

Course **CWT 313**. Equivalent to WECM course ELPT 1002.

35734 Sat 10am to 12pm **Jul 12 to Aug 9** Valle Verde ATC

Welding Technology

Welding Art. / \$ 282 / 28 hrs / 2.8 CEUs

Learn the fundamentals of producing utilitarian and ornamental items using various metals. Use welding techniques to create metal pieces with sheet or stock materials, employing various welding and cutting processes. **Pay for your own art materials.**

Course **CWT 200**.

35735 Sat 1 to 5pm **Jul 12 to Aug 23** Valle Verde ATC-121

Logistics

New / CLT : Certified Logistics Technician.

/ \$ 1,161 / 80 hrs / 8.0 CEUs / Hybrid

The purpose of the CLT® Certified Logistics Technician certification program is to recognize, through certification, individuals who demonstrate mastery of the core competencies of material handling at the front-line (entry-level to front-line supervisor) through successful completion of the certification assessments. The goal of the CLT certification program is to raise the level of performance of logistics technicians both to assist individuals in finding higher-wage jobs and to help employers ensure their workforce increases the company's productivity and competitiveness.

Course **CWT 710**.

35736 Mon to Thu 530 to 830pm **Jun 2 to Jul 16** Online

EPCC is designated as a military-friendly MSSC-Authorized

Assessment Center and may administer the following MSSC assessments:

CPT® Certified Production Technician assessment consisting of five modules:

- 1 Safety;
- 2 Quality Practices and Measurement;
- 3 Manufacturing Processes and Production;
- 4 Maintenance Awareness; and
- 5 Green Production -- a voluntary module.

In addition, MSSC maintains the Foundational-level CLA® Certified Logistics Associate, the Mid-level CLT® Certified Logistics Technician, and the CFT® Certified Forklift Technician assessments.

Contact Jose CassoLopez at 915 **831-7756** or jcassolo@epcc.edu for more information.



For information about any program, please call (915)831-7840



The Texas Workforce Commission has funding available for businesses and employers with apprenticeship programs. The funds help pay for training. Partner with El Paso Community College for a great opportunity to access those funds.

Call us or visit <https://www.twc.texas.gov/programs/apprenticeship>

Customized training through state-funded SDF grants ensures your workforce receives training to upskill and gain proficiency in industry skill standards. The Skills Development Fund awards a grant up to \$500,000 per business. The target average cost per full-time employees is \$2,000.



Call us or visit <https://www.twc.texas.gov/partners/skills-development fund>



Businesses with fewer than 100 employees can register full-time employees at El Paso Community College. Skills for Small Business Program pays tuition and fees up to \$1,000 for each existing employee and up to \$2,000 for each new employee per 12-month period.

Call us or visit <https://www.twc.texas.gov/programs/skills-small-business>

RISK MANAGEMENT INSTITUTE

Get Trained in Safety Today!



Susan Harwood
Training Grant Program



The Institute makes the training not only effective but also highly convenient by designing customized training based on the employer's specific needs for locations, schedules, languages, and topics.

These courses range from courses, such as **OSHA 10 or 30 Hour for Construction or General Industry**, to specific topics such as:

Workplace Safety Training Courses on the Topics You Need.

For more information, please visit our website at:

[epcc.edu/Academics/ContinuingEducation/
RiskManagementInstitute](http://epcc.edu/Academics/ContinuingEducation/RiskManagementInstitute)



or contact Cecy Maurer at (915) 831-7130

**REGISTER TODAY!
SEATS ARE LIMITED.**

- OSHA Record-keeping
 - Accident Investigation Procedures
 - Back Injury Prevention
 - Blood-borne Pathogens Training
 - Confined Spaces
 - Electrocution Hazard Recognition
 - Fall Prevention
 - Forklift Safety Training
 - Hazardous Materials
 - LOTO (Lockout Tagout Procedures)
 - Machine Guarding
 - Personal Protective Equipment (PPE)
 - Trenching and Excavation
 - Struck by or Caught in Between
- And many more!

Courses are one to 30 hours in duration and are offered in English or Spanish. Continuing Education Units (CEUs) and certificates will be awarded upon successful completion of each course.

JER Online

Workforce Certificates & Courses

CENTER FOR CORPORATE AND WORKFORCE TRAINING

The Center for Corporate and Workforce Training (CCWT) is happy to announce our new partnership with JER Online which provides 100% online and instructor-led certificate courses. Some are certificate courses. Please see list below:

- Industrial Foundation Training Series
- Distribution and Warehousing Training Series
- Certificate in Logistics, Supply Chain, and Purchasing Management
- Lean Manufacturing Personal Training Library
- Manufacturing Statistics Personal Training Library
- Lean Six Sigma Black Belt Course Library
- Lean Six Sigma Green Belt Course Library, Manufacturing Version
- Lean Six Sigma Green Belt Course Library, Transactional Version
- Lean Six Sigma Yellow Belt Course Library, Manufacturing Version
- Electrical Foundations Training Series
- Industrial Electricity and Electronics Training Series
- Customer Service Learning Bundle
- Principles of Home Inspection: System & Standards, 100 Professional
- Introduction Coronaviruses, COVID-19, and Emerging Respiratory Viruses (**Free Course**)

For more information, please click the following link coursecatalog.com/epcc to provide you with a more

extensive list of offerings.



In addition to the courses above, JER Online provides the *TechWriter-Certifications*. Technical Communication is a demand occupation that has tremendous potential in any area. As a "**Demand Occupation**" this means more training opportunities are needed to meet business and industry customer requirements. Technical Communicators are everywhere looking for high quality, Certificate-Based Training, and jobs. Some of the available courses are listed below:

- Basic Certificate in Technical Writing
- Certificate in Technical Writing for Current Technical Writers
- Technical Writing & Communication Industry Certificate - Mastery Level
- Advanced Certificate Course in Structured Writing for Technical Documentation
- Certificate in Professional Technical Communication (Portfolio)
- Writers at Work Technical Certificate Program
- Certificate Course in Writing for a Global Market
- Technical Communication Techniques & Principles for Project Managers
- Workplace Experience Certificate (Not a course: Prior Learning Assessment Service)
- Comprehensive Career Builder Certificate in Technical Writing
- Certificate Course in Technical Business Writing for Engineers

For more information, please click the link below techwriter.coursecatalog.com/epcc

CONTRACT OPPORTUNITIES CENTER APEX ACCELERATOR

In 1986, the US Department of Defense, through the Defense Logistics Agency (DLA), awarded a Cooperative Agreement to El Paso Community College to operate the Contract Opportunities Center Apex Accelerator (COC).

In October 2022, the program transferred from DLA to the Office of Small Business Programs (OSBP) with the new mission to serve as the axis for existing and new businesses to strengthen the defense industrial base by accelerating innovation, fostering ingenuity, and establishing resilient and diverse supply chains.

Small businesses have been an integral part of America's economic growth and development. Thus, to ensure continued growth, we must focus on this uniquely American phenomenon and maintain a productive and educated workforce that contributes to the overall success of all businesses.

The COC provides specialized and professional assistance to businesses in the El Paso area who seek to learn how to compete for contracting and subcontracting opportunities with DOD, other federal agencies, state and local governments, educational institutions, and prime contractors to promote business development.

The COC is committed to assisting and motivating businesses - with emphasis on small, disadvantaged, minority, women-owned, veteran-owned, and HUBZone certified - toward market expansion and job creation through active pursuit of government contracting.

Services Provided Include:

Technical Support: Includes bid preparation assistance, pre-award technical assistance and post-award assistance.

Counseling Support: Includes client needs assessment, new client program orientation, guidance and assistance with SAM and DSBS registration, bid analysis, proposal preparation and submission, use of electronic data information.

Outreach Support: Includes conferences, networking, seminars/workshops, on-site visits and technical training.

Bid Matching Support: Customized bid matching services. Annual fee **\$50**.

Marketing Support: Includes research, strategies in accessing federal, state and municipal markets and various electronic registrations.

Reference Support: Includes Federal Acquisition Regulations, Texas State Procurement Information, Municipal purchasing Systems, Procurement Automated Source Systems, Reference Library and Government and Military Specifications.

Training & Resources: Information and training seminars and workshops are offered throughout the year which assist businesses to increase their knowledge and enhance their skills in business management, operations, and specialized areas related to purchasing, procurement and contracting. Counseling and technical assistance is provided free of charge. Seminars and workshops will occasionally require a registration fee.



9050 Viscount Blvd. Bldg. B. Room B545
El Paso, Texas 79925
(915) 831-7745
www.elpasococ-events.org





ESL BRIDGE

We are the **bridge to ESOL**
for ESL learners transitioning into academic courses.



English GED – Preparation courses

In person classes or Online. Tuition under \$40. Call to Register!!

Benefits:

- Small class size (18 students/class)
- Online and in-person classes
- Simple Registration process
- College-level experience
- Low cost tuition

We assist with:

- College Readiness
- Reading
- Grammar
- Writing
- Math

Center for College Access and Development

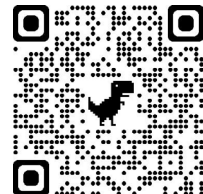
Valle Verde Campus • 919 Hunter Dr., Bldg. B, B264 • El Paso, TX 79915
915.831.3319 • ccad@epcc.edu



**El Paso Community College is an official
Pearson Vue Testing Center
Information Technology (IT) and
Professional Licensure Certification Exams**

- *America College of Sports Medicine (ACSM)**
- *Board of Certified Safety Professionals (BCSP)**
- *C+ Institute**
- *Cisco systems**
- *Commission on Dietetic Registration (CDR)**
- *CompTia**
- *Microsoft**
- *National Strength and Conditioning Association (NSCA)**
- *Pharmacy Technician Certification Board Texas Texas (PTCB)**
- *Texas Educator Certification**
- *Texas Real Estate**
- *Texas Insurance**
- *U.S. Secret Service**
- *And Many More...**

**Register at
www.pearsonvue.com**





HIGH SCHOOL EQUIVALENCY TESTING CENTER

9050 Viscount Blvd. ~ Bldg. B, Rm. 156 ~ El Paso, Texas 79925

Ph. 915-831-7818 ~ Fax 915-831-7819

www.epcc.edu/testingservices

Monday—Friday 8:00 am-5:00pm

Assistance with registration | Flexible testing dates and times | Safe and secure testing environment | Certificate printed on parchment paper | College and career information



GED.COM

877-392-6433

FOUR CONTENT AREAS

- Reasoning Through Language Arts
- Mathematical Reasoning
- Science
- Social Studies

TESTING FEES

\$145 Battery

\$36.25 Individual Test

\$16.25 Retests*

* After the first 3 attempts, 60 day wait period required between retakes

PASSING SCORE: 145-200 on each test. Scores are available within 3 hours of testing.

GED® College: Applicants who score **165-174** can qualify for waivers from applicable placement testing.

GED® College + Credit: Applicants who score **175-200** have demonstrated skills that could qualify them for college credit.

TEA will email your State of Texas Certificate Of High School Equivalency to the email address used to register for the exams three business days after the final test.

Computer-based tests are offered in English and Spanish

ELIGIBILITY REQUIREMENTS

Applicants must **provide valid proof of identity and Texas residency** before being permitted to take any of the tests. Identification must be issued by a government entity and contain the following: applicant's name, date of birth, a recent photograph, signature and Texas address.

Examples of Acceptable Identification: Texas Driver's License, Texas Department of Public Safety ID, US Military ID, Mexican Consulate ID, Passports* (national or foreign), Out-of-State Driver's License*

***Texas Residency:** Texas voter registration card, lease agreement, utility bill, property tax receipt, or federal income tax return. Documents must be current and show the applicant's name and Texas address.

AGE REQUIREMENTS

Testing is available for Texas residents 18 and older; 16 and 17 year olds must submit additional documentation to the Testing Center or the Texas Education Agency (TEA) electronically. Upon verification of all required forms, TEA will notify testing applicant when they can continue with the registration process and schedule their exams.

TEST ACCOMMODATIONS

Special test accommodations are available for applicants with disabilities. Applicants must submit necessary forms, and be approved before they can test with accommodations.

General Information

Call 915 **831-7721** for general information or questions.

Registration and payment

Current EPCC students can

- 1 **register online** for most courses. Go to epcc.edu/admissions/registration to plan, register, and pay for your classes, or meet online with an admissions counselor at epcc.edu/admissions. Click on Get Connected.
- 2 **email the registration form** on page 53 to admissions@epcc.edu, or
- 3 **register in person** at any campus Admissions Office. (It's best to keep your records current by filling out a form for each class.)

New students, or those without a username or id, should

- 1 **fill out the form** on page 53, or
- 2 **email the registration form** on page 53 to admissions@epcc.edu

You must pay in full when you register. (It's best to register and pay two weeks before classes start.) You can pay with cash, check, money order, debit card, or the credit cards Visa, Mastercard, American Express, and Discover. **Do not send cash** through the mail. Make checks or money orders payable to EPCC.

Go to epcc.edu/academics/continuingeducation for more general information about registration, or call 915 **831-7721**.

Refunds

Under EPCC's refund policy, you'll get

- 1 **a 100 percent refund** if your class is canceled.
- 2 **a 100 percent refund** if you formally drop before the **first** class
- 3 **an 80 percent refund** if you formally drop before the **third** class
- 4 **No refund** if you formally drop **after the third class**

We mail refund checks to the address we have on file.
Make sure it's your current address.

Dropping a course

To drop, fill out the student add-drop form on page 54. Before classes start, take it to any campus admissions-registrars office, or the appropriate CE director's office. (See a list of directors on page 52). No refunds will be given after the third day of classes.

Parking on campus

If you're enrolled in Workforce and Continuing Education courses for less than 60 hours, you can get a free temporary parking pass. (Take your Registration Statement to any EPCC vehicle registration office.)

If you're enrolled in 61 hours of courses or more, you must register your vehicle and buy a parking decal. Go to epcc.edu/services/police/vehicle-registration for more information about parking on campus -- or call 915 **831-2867** or **2212**.

Senior Adult Program

El Paso Community College offers seniors 55 years and older a variety of free classes in its Senior Adult Program. Check the Senior Adult Program area of this catalog for dates and locations of our free classes.

Prove you're old enough to take classes by showing your driver's license, birth certificate, or any legal document bearing your age.

Note. EPCC parking policies apply to all students on every campus.

Note. You must purchase any needed books or supplies.

Note. Seniors who register for courses outside the Senior Adult Program must pay all tuition and fees that apply to the course.

Bacterial meningitis vaccine requirement

If you're under 22 and in a non-credit course or program with more than 360 contact hours, you must have a vaccination for meningitis 10 days before classes begin. Proof of immunization must be presented when registering for the course or program.

Financial assistance

Tuition assistance may be available for students enrolled in continuing education career training certificate programs through the Texas Public Education Grant (TPEG). To apply, you must complete the Free Application for Federal Student Aid (Fafsa) at epcc.edu/admissions/financialaid and contact the Director for the program to complete a TPEG application. It is recommended that you submit the Fafsa and TPEG applications eight weeks before registering for classes. Call 915 **831-7721** for assistance.

Records, directory information, and Ferpa, the Family Educational Rights and Privacy Act of 1974

To comply with the Family Educational Rights and Privacy Act, El Paso County Community College District gives notice that the following types of directory information will be released to the general public without the written consent of the student :

- 1 Student's name
- 2 Student's address
- 3 Telephone listing
- 4 Dates of attendance
- 5 Major field of study, and awards and degrees received
- 6 Most recent previous institution attended
- 7 Date of birth

Currently-enrolled students may request that all or part of their directory information be withheld from the public by filing a written request at the Admissions and Registration Office. Such a request will remain in effect until the student authorizes its removal in writing. Release of any additional information pertaining to student records

must be authorized, in writing, by the student, except as authorized under the law. Students have a right to inspect, review, request copies of, and challenge the contents of their educational records. A fee will be charged for copies provided.

Frequently asked questions

How and where do I register for a course ?

Registrations are processed on a first-come, first-served basis. You can register in person at any campus, or online with an admissions assistant at epcc.edu/admissions. Click on the Get Connected button.

You'll need a filled-out Continuing Education registration form. Find one on the web at epcc.edu/academics/continuingeducation -- or at the back of this catalog.

You may also email the form to admissions@epcc.edu. Online registration is available for returning students for some courses. For more information, call 915 **831-7721**, or call Admissions at 915 **831-2150**.

Are there any entrance requirements ?

The minimum age for adult continuing education courses is 17 years of age unless otherwise noted. Further information about ages and other prerequisites can be found in the individual course listing, or with the Continuing Education Director. It is your responsibility to ensure that all course requirements and prerequisites are met. You won't be allowed to remain in a course if its prerequisites and requirements are not satisfied.

What if my class is canceled ?

In the event of a cancellation or change in schedule, we'll contact each student at their phone numbers on file. Whenever possible, the decision to cancel a course will take place 48 hours before it starts. Students get a full 100 percent refund for canceled classes. Students can also ask for a transfer to another section, if available.

What is a concurrent course ?

Concurrent courses are credit courses open to both degree-seeking and CE students. Degree-plan students earn college credit, while CE students earn continuing-education units. These units can later be turned into college credit under certain conditions. (In class listings, **Conc** before a section number means that section is concurrent.) For more information, call 915 **831-7721**.

Continuing Education Transcripts and Certificates of Completion

Transcripts may be requested at any EPCC campus Admissions Office or by US mail. For more information, call 915 **831-2282**. Certificates of Completion should be requested through the director's office from which they were issued. There may be a fee for issuing duplicate certificates.

EPCC In-Person Registration Locations

Go to epcc.edu/contact/maps for **maps of these campuses**.

Valle Verde campus / Monday to Friday 8am to 5pm
915 **831-2150** / 919 Hunter Dr, Enrollment Services Center, Bldg E

Rio Grande campus / Monday to Friday 8am to 5pm
915 **831-4035** / 100 West Rio Grande Ave, Student Services Ctr, Room **D-101**

Transmountain campus / Monday to Friday 8am to 5pm
915 **831-5030** / 9570 Gateway North, Room **1051**

Mission Del Paso campus / Monday to Friday 8am to 5pm
915 **831-7017** / 10700 Gateway East, Room **A-123**

Northwest campus / Monday to Friday 8am to 5pm
915 **831-8830** / 6701 South Desert Blvd, Main Bldg, Room **M-73**

Fort Bliss campus / Monday to Friday 7:30am to 4:30pm
Close for lunch from 1 to 2pm
915 **831-5511** / 641 Taylor Rd, **RM10**

EPCC Central Offices

Administrative Services Center ASC
915 **831-3722** / 9050 Viscount Blvd 79925



AVP Workforce & Continuing Education



Office

Blayne Primozych, Associate Vice-President <i>Workforce and Continuing Education</i> <ul style="list-style-type: none"> ▪ Jessica Diaz, Senior Administrative Associate ▪ Terry Delgado, Administrative Associate <i>Senior Adult Program</i> <ul style="list-style-type: none"> ▪ Nicole Gonzales, Administrative Associate 	831-7724 831-7795 831-7721 831-7801
Daniel Guerra, Dean VV <i>Language Institute</i> <ul style="list-style-type: none"> ▪ Lucina (Lucy) Flores, Manager Language Institute 	831-2857 831-2154
Susana Rodarte, Dean VV <i>Center for College Access and Development</i> <ul style="list-style-type: none"> ▪ Maria del Carmen Casavantes, Manager Workplace Literacy 	831-2868 831-3310
Pablo Armendariz, Director - ASC B <i>Contract Opportunities Center</i> <ul style="list-style-type: none"> ▪ Alicia Salcedo, Administrative Associate 	831-7747 831-7751
Barry Bogle, Director - MDP <i>Law Enforcement Training Academy</i> <ul style="list-style-type: none"> ▪ Maria Jimenez, Administrative Associate 	831-7116 831-7117
Jose CassoLopez, Director - ASC B <i>Center for Corporate & Workforce Training</i> <ul style="list-style-type: none"> ▪ Nancy Reyes, Administrative Associate <i>Risk Management Institute – ASC B</i> <ul style="list-style-type: none"> ▪ Gloria C. (Cecy) Maurer, Coordinator 	831-7756 831-7824 831-7130
Audrey A. Marrufo, Director - ASC B <i>Small Business Development Center</i> <ul style="list-style-type: none"> ▪ Norma Curiel, Administrative Assistant 	831-7733 831-7742
Leticia Guerra, Director - ASC B <i>CE, Business & Tech. Education, Personal Enrichment and Children's College</i> <ul style="list-style-type: none"> ▪ Rosa Cabral, Program Assistant 	831-6695 831-6689
Cheryl Stiles, Director - ASC B <i>CE Health -</i> <ul style="list-style-type: none"> ▪ Elva Santacruz, Administrative Associate 	831-7808 831-7831



El Paso Community College
Continuing Education Registration Form
Admissions@epcc.edu
FAX: (915) 831-2161

STUDENT REGISTRATION FORM (Please print clearly/ Por favor imprima claramente)

Keeping your information current with EPCC is important. This will help us contact you in case of cancelled classes, schedule changes, or any other reason. Student refunds will be sent to the address on file./Es importante mantener su información actualizada con EPCC. Esto nos ayuda a informarle si sus clases se han cancelado, si hay cambios en su horario de clases o por cualquier otro motivo. Re-embolsos se enviarán en dos semanas a la dirección proporcionada.

SSN or EPCC ID: _____ Date of Birth(Mo/Day/Year)/Fecha de Nacimiento(mes/día/año): ____/____/____

Legal Name/Nombre Legal: _____
Last Name/Apellido First Name/Primer Nombre Middle Initial/Inicial De Segundo Nombre

Mailing Address/Domicilio: _____
Street/Domicilio City/Ciudad State/Estado Zip Code/Código Postal

Phone/Telefono: _____
Cell/Celular Work/De Trabajo Home/En Casa

Email/Correo Electrónico: _____ Gender/Sexo: ☐ (F) ☐ (M)

Emergency Contact Person/Persona Para Avisar En Caso De Emergencia: _____
Name/Nombre Phone/Teléfono

For disability accommodations, please contact Center for Students with Disabilities at/Para asistencia por cuestión de discapacidad, por favor llame al Centro Para Estudiantes con Discapacidades **(915) 831-2426**.

Request EPCC to release your directory information?/Desea que EPCC comparta su información? Yes/Si ☐ No ☐

Ethnicity/Etnicidad(optional) ☐ White(Non Hispanic)/Blanco(No Hispano) ☐ Hispanic/Hispano
☐ Asian/Pacific Islander/Asiático/Islas del Pacifico ☐ Black(Non Hispanic)/Afro-Americano (No Hispano)
☐ American Indian/Alaskan Native/Indio Americano/Nativo De Alaska ☐ Other/Otra Nacionalidad

Are you a U.S. citizen? (Yes/Si) ☐ (No) ☐ Are you Permanent Resident? (Y/Si) ☐ (No) ☐
Es usted ciudadano americano? Es usted residente permanente?

Student Signature/Firma del Estudiante: _____ Date/Fecha: _____

Example/Ejemplo:

27870 MGT 811 Introduction to Business Basics VV 1/22/13-3/12/13 Tues 6pm-9pm

CRN	Course Number/Clase Número	Course Title/Título Del Curso	Campus	Dates/Fechas	Days/Días	Time/Horario
27870	MGT 811	Introduction to Business Basics	VV	1/22/13-3/12/13	T	6 – 9 pm

CRN	Course Number/Clase Número	Course Title/Título Del Curso	Campus	Dates/Fechas	Days/Días	Time/Horario

Registration must be received at least one week prior to the start of the class. Completed forms should be either emailed to: **Admissions@epcc.edu** or faxed to: **(915) 831-2161**. Please remember to sign the form.

La inscripción debe recibirse al menos una semana antes del comienzo de la clase. Los formularios completos deben enviarse por correo electrónico a: **Admissions@epcc.edu** o por fax a: **(915) 831-2161**. Recuerde firmar el formulario.

Once you have been registered for your classes you will receive an email with your student ID number and PIN, and confirming that you have been registered for continuing education classes. At that time you must pay for your classes online at the link included below. Classes will be dropped if payment has not been made within two business days of registration. If you have any questions regarding payment please call Tuitions/Cashiering Services at (915) 831-2107 or (915) 831-2569

Cuando se haya registrado para sus clases, recibirá un correo electrónico con su número de identificación de estudiante y PIN, y confirmará que se ha registrado para las clases de educación continua. En ese momento, debe pagar sus clases en línea en el enlace que se incluye a continuación. Las clases se cancelarán si el pago no se ha realizado dos días después de su inscripción. Si tiene alguna pregunta sobre el pago, llame a los servicios de matrícula/cajero al (915) 831-2107 o al (915) 831-2569.

https://secure.touchnet.com/C20715_tsa/web/login.jsp

Processed by: _____ Date: _____



EL PASO COMMUNITY COLLEGE
Admissions and Registrar's Office
Admissions@epcc.edu
Fax (915)831-2161
CONTINUING EDUCATION
STUDENT ADD/DROP FORM

Keeping your information **CURRENT** with EPCC is important. It helps us inform you if classes have been cancelled, if there are changes to your schedule, or if we need to contact you for any reason. Your information is kept confidential. If student is due any refunds, EPCC will send to the address on file.

EPCC ID: _____ DATE OF BIRTH (Mo/Day/Year): ____/____/____

LAST NAME: _____ (FIRST NAME): _____ (Middle Initial): _____

STUDENT SIGNATURE: _____ DATE: _____

ADD	CRN (SECCION)	COURSE & NUMBER (CURSO Y NUMERO)	COURSE TITLE (TITULO DEL CURSO)	START/END DATE (COMIENZO/FINAL DEL CURSO)

DROP	CRN (SECCION)	COURSE & NUMBER (CURSO Y NUMERO)	COURSE TITLE (TITULO DEL CURSO)	START/END DATE (COMIENZO/FINAL DEL CURSO)

Processed by: _____

Date: _____

Revised 02/07/2022



Communication Improvement in the Workplace



Are you a second language learner seeking to improve your English for better workplace communication?

This course is for you!

- ✓ 8-week courses
- ✓ Evening hours: 5:30 pm to 7:30 pm
- ✓ TUESDAYS – WEDNESDAYS – THURSDAYS (IN PERSON CLASSES)
- ✓ Tuition \$50

Questions? Contact us!

Center for College Access and Development

Monday - Friday 8:00 am to 5:00 pm

(915) 831-3319 – (915) 831-3321





The Best Place to Start *and Finish!* Language Institute

915-831-2154

Li@epcc.edu

Aprende
Inglés

¿Te interesa aprender inglés?

Te ofrecemos un programa interactivo para aprender inglés de inmersión total en un ambiente dinámico.

- Clases Presenciales
- No Se Requiere GED /Preparatoria
- Horarios Flexibles
- Mínimo 17 años





P.O. Box 20500
El Paso, Texas 79998-0500

*****ECRWSS*****
Residential Customer, El Paso, Texas

Non-Profit
Organization
US Postage
PAID
El Paso, TX
Permit No. 2121



FAMILY FRIENDLY SPACES



Parent Resource Centers at all 5 campuses

Lactation
Rooms and
Pods

Engaging
Playtime and
Storytelling

Infant and
Toddler Play
Areas



Our Mission

Creating a family-friendly environment where student parents can study, learn, grow and reach their goals while creating a two generational approach by setting a positive example for their children

Our Services

We offer a safe and convenient space for parents and their children. Visit our website to find locations at all five campuses and hours of operation



CONTACT US

epcc.edu/Services/family-friendly-campus-services

Parent Resource Centers Locations

EPCC Locations	Room #	Telephone
•Mission del Paso	C123	(915) 831-7168
•Northwest	L100	(915) 831-8883
•Rio Grande	E116	(915) 831-4424
•Transmountain	1700	(915) 831-5044
•Valle Verde	A2415	(915) 831-3246



Smart Access technology, the primary way to unlock a pod is with the free Mamava app or code on they keypad.

Lactation Pod Locations!!

Administrative Services Center (ASC):

Building B, Bottom floor, next to sitting area, in front of elevators, next to the stairs.

Mission del Paso Campus:

Immediately to the left of the entrance to Building D.

Northwest Campus:

NW Campus Library, right outside of the NW Student Parent Resource Center Room NW L117

Rio Grande Campus:

The southeast corner of the cafeteria. There is an accessibility ramp to the right of the staircase. The Pod will be close to the Tejano Mercado.

Valle Verde Campus:

Arts, Science, Technology (AST) Building near the Flexitorium- AST 150, far right against the window (outlet on wall).