

**Belly Dance Fitness.**  
A brand new fitness routine !  
Better posture.  
/ Apr 8

**Intro to Home Electrical.**  
Household installs, wiring, codes, safety.  
/ Mar 22

**BLS : Basic Life Support.**  
CPR for children and adults.  
/ Jan 11

**Brake Systems.**  
Basic diagnosis, anti-lock, parking brakes.  
Hands-on.  
/ Jan 11

**Mind-Body Medicine.**  
Mind-body ways to reduce stress, prevent disease. / Jan 22

**Resucitación Cardiopulmonar En Español.**  
Incluye RCP para infante y adulto.  
/ Jan 15

**Women's Only Self Defense.**  
Self defense, escapes, pepper spray.  
/ Feb 15

**Ballet for Kids.**  
Beginning barre, proper alignment, flexibility.  
/ Mar 29

**New / American Boxing for Kids.**  
Confidence, self esteem, and physical fitness.  
/ Mar 22

**English as a Second Language.**  
ESL for seniors. Motivational.  
/ Jan 24

**Basic Bartending.**  
Running a bar, mixing cocktails.  
/ Apr 9

**Social Media.**  
Download and use Facebook, Instagram, Twitter. / Jan 25

# Spring CE Classes 2025



**El Paso Community College Spring 2025  
Workforce and Continuing Education Classes**  
Register for classes starting Dec 2 at  
[epcc.edu/academics/continuingeducation](http://epcc.edu/academics/continuingeducation)

# EPCC Workforce and Continuing Education Schedule Spring 2025

## The El Paso County Community College District Board of Trustees



**Dr William Serrata**  
College President



**Mr Brian Haggerty**  
Chair of the Board, District 2



**Dr Carmen Olivas Graham**  
Vice Chair of the Board, Dist 5



**Ms Bonnie Soria Najera**  
Board Secretary, District 7



**Mr John E Uxer, Jr**  
Trustee, District 1



**Mrs Belen Robles**  
Trustee, District 3



**Ms Nina Piña**  
Trustee, District 6



**Mr Jesus Mendez**  
Trustee, District 4

# Contents

## 04 / Business, Computers, Technical Education

Computer Business Applications  
Computer Skills  
Cisco Academy  
Business Management / Technical Education  
Real Estate  
Professional Floral Design Certificate  
Online Courses  
New Career Training Programs Online

## 09 / Health And Fitness

CPR and First Aid  
Ekg Technician  
Emergency Medical Services  
Emergency Medical Technician  
General Health Courses  
Health Ed2Go Courses  
Medication Aide  
Nursing Refresher  
Nursing Assistant  
Pharmacy Technician  
Phlebotomy Technician  
Journey to Wellness  
Wellness Ed2Go Courses  
Fitness  
Massage Therapy  
Continuing Education for Massage Therapists  
Cosmetology Instructor Certificate  
Nail Technician

## 18 / Law Enforcement

## 19 / Civilian Firearms Courses

## 21 / Motorcycle Rider Courses

## 22 / Personal Enrichment

Home and Garden  
Creative Arts  
Music  
Culinary Arts

## 26 / Online Courses

Exam Preparation  
Personal Development  
Young Adult Courses

## 27 / Childrens College

Academic Enrichment  
Black Rocket  
Snapology  
Arts  
Sports and Fitness  
Performing Arts  
Young Rembrandts  
Cooking  
Children's and Teen ESL Program

## 31 / Senior Adult Program

Arts  
Computers  
Dance and Exercise  
Languages  
Music  
Personal Enrichment  
Wellness

## 35 / Small Business Management Institute

## 37 / SBMI Session Descriptions

## 38 / Language Institute

## 41 / Center for Corporate, Workforce Training

Corporate and Workforce Trainings  
Institute for Customer Service Excellence : Southwest Region  
Automotive Technology  
Auto Collision and Repair  
Building Trades Academy  
Electrical Technology  
Construction Technology  
Welding Technology  
Logistics

## 51 / General Information

Registration and Payment  
Refunds  
Parking on Campus  
Senior Adult Program  
Bacterial Meningitis Vaccine Requirement  
Financial Assistance  
Frequently Asked Questions  
CE Transcripts and Certificates of Completion  
Locations  
Key to Codes  
Staff  
How to Register

El Paso County Community College District does not discriminate on the basis of race, color, national origin, religion, gender, age, disability, veteran status, sexual orientation, or gender identity.

### Courses are subject to change.

Go to [epcc.edu/academics/continuingeducation](http://epcc.edu/academics/continuingeducation) for up-to-date course information. Submit your CE Registration Form to our Admissions Department at [admissions@epcc.edu](mailto:admissions@epcc.edu) for processing.

# Business / Computers / Technical Education

**Leticia Guerra**, Director.

(Email us at [mlerma14@epcc.edu](mailto:mlerma14@epcc.edu) or call us at 915 831-6682.) Go to [epcc.edu/academics/continuingeducation](http://epcc.edu/academics/continuingeducation) to learn about new course offerings.

You must have your login credentials on the first day of class, and you must be 17 years of age to register in these classes.

## Computer Business Applications

These accelerated 4-hour courses provide refresher training for on-the-go professionals, but are not recommended for introductory training.

### Introduction to Microsoft Excel. / \$ 45 / 4 hrs

Course **CAT 042**.

26426	Sat 9am to 1pm	<b>Feb 8</b>	Admin Svc Ctr B485
-------	----------------	--------------	--------------------

### Power Point Basics. / \$ 45 / 4 hrs

Course **CAT 018**.

26427	Sat 9am to 1pm	<b>Jan 18</b>	Admin Svc Ctr B485
-------	----------------	---------------	--------------------

### Foundation of Microsoft Word. / \$ 45 / 4 hrs

Course **CAT 043**.

26428	Sat 9am to 1pm	<b>Feb 15</b>	Admin Svc Ctr B485
-------	----------------	---------------	--------------------



## Computer Skills

### Introduction to Computers. / \$ 323 / 48 hrs / 4.8 CEUs

Provides an overview of computer information systems. Introduces computer hardware, software, procedures, and human resources. Explores the integration of application usage and provides exploration on the impact within the business community and society as a whole. **No class on Mar 10 to 14, Mar 31, and Apr 18.** Call 915 831-2056 for more information.

Course **CAT 003**. Equivalent to WECM course ITSC 1001.

26429	Tue Thu 7 to 820pm ( Lab Mon to Thu )	<b>Jan 21 to May 15</b>	Valle Verde AST365 Valle Verde AST365
-------	--	-------------------------	--

### Introduction to Excel. / \$ 100 / 12 hrs / 1.2 CEUs

Designed for those with little or no functional knowledge of Excel, as well as those who regularly use Excel at a basic level but wish to enhance their skills.

Course **CAT 051**. Equivalent to WECM course ITSW 1022.

26430	Mon Wed 6 to 8pm	<b>Apr 14 to Apr 30</b>	Admin Svc Ctr B485
-------	------------------	-------------------------	--------------------

### Introduction to PowerPoint. / \$ 100 / 12 hrs / 1.2 CEUs

Designed for students who wish to gain a foundational understanding of Microsoft PowerPoint that is necessary to create and develop engaging multimedia presentations. **Prerequisite:** Knowledge of Microsoft Word.

Course **CAT 052**. Equivalent to WECM course ITSW 1037.

26431	Tue Thu 6 to 8pm	<b>Feb 11 to Feb 27</b>	Valle Verde B123
-------	------------------	-------------------------	------------------

### Introduction to Word. / \$ 100 / 12 hrs / 1.2 CEUs

Provides instruction in the various aspects of the Word processing package. Create, edit, and print documents such as letters, resumes, and reports using the popular software program. **Prerequisite:** Knowledge of Windows.

Course **CAT 053**. Equivalent to WECM course POFI 1024.

26432	Tue Thu 6 to 8pm	<b>Jan 14 to Jan 30</b>	Valle Verde B123
-------	------------------	-------------------------	------------------

### Microsoft Office 365 Essentials. / \$ 186 / 24 hrs

Master Microsoft Office 365 easily! Gain essential skills in PowerPoint, Word, and Excel to become more marketable. No shortcuts, just a convenient way to enhance your productivity and stay up-to-date with 21st-century business needs. **Prerequisite:** Basic computer skills including typing, navigating windows, using web browsers, and downloading files from email.

Course **CAT 050**.

26433	Tue Thu 6 to 8pm	<b>Jan 14 to Feb 20</b>	Admin Svc Ctr B485
-------	------------------	-------------------------	--------------------

### Operating System Security. / \$ 431 / 64 hrs / 6.4 CEUs

Provides instruction on how to safeguard computer operating systems by demonstrating server support skills and designing and implementing a security system. Identifies security threats and monitors network security implementations. Uses industry best practices to configure operating systems to security standards. **No class on Mar 10 to 14, Mar 31, and Apr 18.**

Course **CAT 027**. Equivalent to WECM course ITSY 2000.

Conc 26434	Mon Wed 1230 to 150am ( Lab Mon to Sat )	<b>Jan 23 to May 15</b>	Valle Verde AST341
------------	---	-------------------------	--------------------

### Beginning Web Programming. / \$ 431 / 64 hrs / 6.4 CEUs

Develop skills in web programming including mark-up and scripting languages. **Prerequisite:** CAT 003, Introduction to Computers. **No class on Mar 10 to 14, Mar 31, and Apr 18.**

Course **CAT 022**. Equivalent to WECM course ITSE 1011.

Conc 26435	Tue Thu 230 to 350pm ( Lab Mon to Sat )	<b>Jan 21 to May 15</b>	Valle Verde AST365
------------	--	-------------------------	--------------------



New / **Computer Fundamentals.** / \$ 45 / 4 hrs

This introductory course provides essential skills and knowledge for navigating computers with confidence. You will learn fundamental computer skills including typing techniques to boost efficiency and productivity. In hands-on exercises you'll gain proficiency navigating file systems using Explorer, handling downloads, organizing files effectively and managing email. You will also explore safe browsing practices to navigate the web securely, and learn how to protect personal information while shopping online. By the end of the course you'll navigate the digital landscape easily and stay safe online.

Course **CAT 054.**

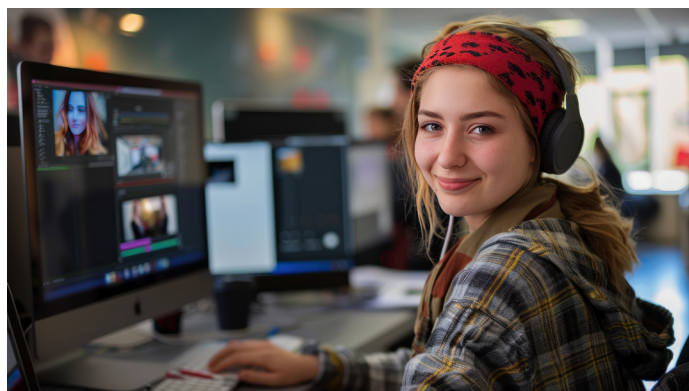
26436	Sat 830 to 1230pm	<b>Mar 22</b>	Admin Svc Ctr B485
26954	Sat 830 to 1230pm	<b>May 3</b>	Admin Svc Ctr B485

**Cybersecurity : Internet Dangers Protection.** / \$ 65  
/ 10 hrs / 1.0 CEUs

If banking or buying online -- or having cameras in your cell phones, laptops, your home or your business -- makes you nervous, then you need the information in this course. This course will provide you with the strategies, skills, and mindset needed to protect your money, your computer, your identity, and your privacy when you connect to the internet.

Course **CAT 047.** Equivalent to WECM course HMSY 1011.

26437	Tue 6 to 8pm	<b>Jan 21 to Feb 18</b>	Valle Verde AST125
-------	--------------	-------------------------	--------------------



**Adobe Photoshop CC.** / \$ 180 / 24 hrs / 2.4 CEUs

Provides the fundamentals to master the world's leading photo retouching, color painting, and image editing program. Photoshop excels as a graphics production tool for whether you are an artist who needs to create color images, or a photographer who wants to retouch proofs, or a designer editing photo montages for print and the web. **Prerequisite:** Working knowledge of Windows. **No class on 3/10 thru 3/15.**

Course **CAT 005.** Equivalent to WECM course GRPH 1051.

26438	Tue Thu 6 to 8pm	<b>Feb 25 to Apr 10</b>	Valle Verde B164
-------	------------------	-------------------------	------------------

**Adobe Illustrator CC.** / \$ 175 / 24 hrs / 2.4 CEUs

Adobe Illustrator is a powerful drawing software program offered by Adobe. Regardless of your ability, you can use Illustrator to draw shapes and lines, import graphics and pictures, and add text. This course is designed to teach you everything you need to know to make full use of the software.

Course **CAT 004.** Equivalent to WECM course GRPH 1002.

26439	Mon Wed 6 to 8pm	<b>Jan 27 to Mar 5</b>	Valle Verde B164
-------	------------------	------------------------	------------------

**Introduction to PC Operating Systems.** / \$ 431  
/ 64 hrs / 6.4 CEUs

Studies the introduction to personal computer operating systems including installation, configuration, file management, memory and storage management, control of peripheral devices, and use of utilities. **No class on Mar 10 to 14, Mar 31, and Apr 18.**

Course **CAT 021.** Equivalent to WECM course ITSC 1005.....

Conc 26440	Tue Thu 530 to 650pm	<b>Jan 21 to May 15</b>	Valle Verde AST341 ( Lab Mon to Thu )
------------	----------------------	-------------------------	--

## Cisco Academy

Students must purchase their own supplies and textbooks. Email [dnajera5@epcc.edu](mailto:dnajera5@epcc.edu) for more information, or call 915 **831-2056**.

**CCNA 1: Introduction to Networks.** / \$ 431  
/ 64 hrs / 6.4 CEUs

Covers networking architecture, structure, and functions, and introduces the principles and structure of IP addressing and the fundamentals of Ethernet concepts, media, and operations. **Prerequisite:** CAT 003, Introduction to Computers. **No class on Mar 10 to 14, Mar 31, and Apr 18.**

Course **CAT 007.** Equivalent to WECM course ITCC 1014.

Conc 26441	Mon Wed 530 to 650pm	<b>Jan 22 to May 14</b>	Valle Verde AST341 ( Lab Mon to Thu )
------------	----------------------	-------------------------	--

**CCNA 2: Switching, Routing, and Wireless Essentials.**  
/ \$ 431 / 64 hrs / 6.4 CEUs

Describes the architecture, components, and operations of routers and switches in small networks, and introduces (WLAN) wireless local area networks and security concepts. Provides an in-depth understanding of how routers and switches operate and are implemented in the LAN environment. **Prerequisite:** CAT 007, CCNA 1: Introduction to Networks. **No class on Mar 10 to 14, Mar 31, and Apr 18.**

Course **CAT 008.** Equivalent to WECM course ITCC 1044.

Conc 26442	Tue Thu 7 to 820pm	<b>Jan 21 to May 15</b>	Valle Verde AST341 ( Lab Mon to Thu )
------------	--------------------	-------------------------	--

**CCNA 3: Enterprise Networking, Security, and Automation.** / \$ 431 / 64 hrs / 6.4 CEUs

Describes the architecture, components, operations, and security to scale for large, complex networks, including (WAN) wide area network technologies. Emphasizes network security concepts and introduces network virtualization and automation. **Prerequisite:** CAT 008, CCNA 2: Switching, Routing, and Wireless Essentials. **No class on Mar 10 to 14, Mar 31, and Apr 18.**

Course **CAT 009.** Equivalent to WECM course ITCC 2020.

Conc 26443	Tue Thu 530 to 650p	<b>Jan 21 to May 15</b>	Valle Verde AST361 ( Lab Mon to Thu )
------------	---------------------	-------------------------	--

## Business Management / Technical Education

**Business Entrepreneurship.** / \$ 115 / 12 hrs / 1.2 CEUs

This course provides an introduction to the principles of entrepreneurship. Topics include identifying potential business opportunities, self-growth and readiness, the role of an entrepreneurship process, an overview of ecommerce and drop ship models similar to amazon fba, an overview of how to invest stocks, and how to start your own entrepreneurship group and venture growth. Upon completion students will have real world understanding of the entrepreneurial process and issues faced by the entrepreneur. **No class on 3/31.**

Course **MGT 225.** Equivalent to WECM course BUSG 1008.

26444	Mon Wed 6 to 8pm	<b>Mar 17 to Apr 7</b>	Admin Svc Ctr B485
-------	------------------	------------------------	--------------------

**Introduction to Accounting I.** Online with virtual lab.  
/ \$ 323 / 48 hrs / 4.8 CEUs

Studies analyzing, classifying, and recording business transactions in a manual and computer environment. Emphasizes understanding the complete accounting cycle, preparing financial statements and bank reconciliations, and payroll procedures and reporting. **Prerequisite:** Knowledge of computerized skills. **No class on Mar 10 to 14, Mar 31, and Apr 18.**

Course **MGT 809.** Equivalent to WECM course ACNT 1003.

Conc 26447	12am to 1159pm	<b>Jan 21 to May 16</b>	Online ( Lab 12am to 1150pm )
------------	----------------	-------------------------	----------------------------------

## Court Reporter Certification Preparation.

Online with virtual lab. / \$ 368 / 48 hrs / 4.8 CEUs

Preparation for the Texas CSR and RPR examinations using mock exams. Designed to be repeated. **Prerequisite:** CRTR 2435, (**Accelerated Machine Shorthand**). **No class on Mar 10 to 14, Mar 31, and Apr 18.**

Course **PIE 450**. Equivalent to WECM course CRTR 2031.

Conc 26448 12am to 1159pm **Jan 21 to May 16** Online  
( Lab 12am to 1159pm )

## Court Reporting Briefs. Online. / \$ 125 / 16 hrs

Will provide students additional skills and knowledge to enhance speed building by learning stenography briefs. **No class on Apr 18.**

Course **PIE 214**.

26449 12am to 1159pm **Apr 7 to May 2** Online

## Customs Broker : License Prep Course I. / \$ 375

/ 30 hrs / 3.0 CEUs

Examines all facets of the customs process, including rules and regulations. Broker roles, functions, and USCMA rules of origin will also be covered.

Course **CBL 718**. Equivalent to WECM course IBUS 2003.

26450 Tue Wed Thu 6 to 8pm **Feb 4 to Mar 6** Valle Verde B150

## Customs Broker : License Prep Course II. / \$ 375

/ 30 hrs / 3.0 CEUs

This course is for students experienced in the basic principles of importing and exporting. Students will focus on the statutory and regulatory provision and valuation of merchandise according to the Harmonized Tariff Schedule.

Course **CBL 719**. Equivalent to WECM course IBUS 2003.

26451 Tue Wed Thu 6 to 8pm **Mar 18 to Apr 17** Valle Verde B150

## American Sign Language I. / \$ 125 / 16 hrs / 1.6 ceus

Establishes good foundation of basic ASL American Sign Language. Learn ASL vocabulary and grammar to converse with hearing-impaired individuals. **No class on Mar 15.**

Course **PIE 857**. Equivalent to WECM course SLNG 1003.

26452 Sat 9 to 11am **Feb 1 to Mar 29** Valle Verde B187

## Preparation for the Texas Landscape Irrigation Exam.

/ \$ 377 / 42 hrs / 4.2 CEUs

Study of applicable codes, laws, regulations, terminology, components, installation methods, design principles, hydraulics control systems, and related information necessary for licensure and practice. Classroom instruction, lab exercises, and practical field experiences. Emphasizes design, installation, maintenance, and repair of sprinkler and irrigation systems. Prepares student for Texas Landscape Irrigation License Exam. Check your EPCC email for class meeting times and syllabus. **Textbook fee is included.** **No class on Mar 10 to 15.**

Course **SDG 705**. Equivalent to WECM course HALT 1033.

26453 Tue Thu 6 to 9pm **Feb 4 to Mar 27** Valle Verde A1510



## Real Estate

The requirement for a real estate salesperson's license in the State of Texas is 180 contact hours. Go to [trec.texas.gov](http://trec.texas.gov) for more information.

### There are six mandatory 30-hour courses in spring, summer, and fall.

- \* Principles of Real Estate I
- \* Principles of Real Estate II
- \* Law of Agency
- \* Law of Contracts
- \* Promulgated Contract Forms
- \* Real Estate Finance.

## Principles of Real Estate I. / \$ 250 / 30 hrs / 3.0 CEUs

Provides instruction for fundamental real estate principles and practices in Texas. Includes TREL, TREC, federal, state, and local laws and regulations relating to housing and real estate in general, including discrimination.

Course **RES 813**. Equivalent to WECM course RELE 1002.

26455 Tue Thu 6 to 9pm **Jan 14 to Feb 13** Valle Verde B105

Check your EPCC email for class meeting times and syllabus.

## Principles of Real Estate II. / \$ 250 / 30 hrs / 3.0 CEUs

Required course for application of a salesperson's license. Covers fundamental principles and practices of real estate. Emphasis will be placed on real estate contracts, mortgage theory and law, deed of trust, taxes and assessment, and closing transaction. This course provides coverage of real estate leases / property management, investments, and land-use control. It includes a review of topics covered in Real Estate I. **No class on Jan 20.**

Course **RES 814**. Equivalent to WECM course RELE 1039.

26456 Mon Wed 6 to 9pm **Jan 13 to Feb 17** Valle Verde B104

## Real Estate Finance. / \$ 250 / 30 hrs / 3.0 CEUs

Required course for application of a salesperson's license. Provides an overview of the US monetary system, primary and secondary money markets, sources of mortgage loans, federal government programs, loan applications, processes and procedure, closing costs, alternative instruments, law affecting mortgage lending and the State Housing Agency. (Check your EPCC email for class meeting times and syllabus).

Course **RES 855**. Equivalent to WECM course RELE 1020.

26457 Mon Wed 6 to 9pm **Apr 14 to May 14** Valle Verde B108

Check your EPCC email for class meeting times and syllabus.

## Law of Agency. / \$ 250 / 30 hrs / 3.0 CEUs

Studies the creation of principal-agent relationship, the authority of an agent, agent fiduciary duties, agency disclosure requirements and agency termination. The course examines other real estate employment and regulatory requirements as related to the real estate profession and agency. Legal principles will be reinforced by case studies and student participation.

Course **RES 815**. Equivalent to WECM course RELE 2002.

26458 Tue Thu 6 to 9pm **Apr 1 to May 1** Valle Verde B104

### Law of Contracts. / \$ 250 / 30 hrs / 3.0 CEUs

Required course for application of a salesperson's license. Includes studies of Texas Real Estate Commission rules, an emphasis on elements of contracts, offer and acceptance, and remedies of breach of contracts.

**No class on Mar 10 to 14.**

Course **RES 852.** Equivalent to WECM course RELE 1012. ....

26459 Tue Thu 6 to 9pm **Feb 18 to Mar 27** Valle Verde B110

### Promulgated Contract Forms. / \$ 250

/ 30 hrs / 3.0 CEUs

This course includes but is not limited to unauthorized practice of law, broker-lawyer committee, current promulgated and approval forms, commission rules governing use forms and care studies involving use of forms.

**No class on Mar 10 to 14, and Mar 31.**

Course **RES 816.** Equivalent to WECM course RELE 1000.

26460 Mon Wed 6 to 9pm **Feb 24 to Apr 7** Valle Verde B104

### Property Management. / \$ 250 / 30 hrs / 3.0 CEUs

Covers the role of the property manager, landlord policies, operational guidelines, leases, lease negotiations, tenant relations, maintenance, reports, habitability laws, and the Fair Housing Act. (This course is an extension of further learning for Real Estate License and resume building).

**No class on Mar 15 and Apr 19.**

Course **RES 812.** Equivalent to WECM course RELE 1015.

26465 Sat 830 to 1130am **Feb 22 to May 10** Valle Verde B131

### Accredited Buyers Representative Designation.

/ \$ 125 / 16 hrs

This Accredited Buyers Designation course establishes a foundation of training, skills, and resources to help you succeed as a buyer's representative.

Course **RES 856.**

26461 Sat 830am to 1230pm **Jan 18 to Feb 8** Valle Verde B188

Check your EPCC email for class meeting and syllabus.



## Professional Floral Design Certificate

**If you have a creative nature and a strong desire to own your business or work in a floral shop, this program is designed to meet your needs.**

**To earn a certificate, you must complete the following Continuing Education courses.**

- 1 Floral Design 2 Floral Design II 3 Sympathy Floral Techniques
- 4 Wedding Floral Techniques 5 Flower Shop Management

### Sympathy Floral Techniques. / \$ 180 / 15 hrs / 1.5 CEUs

Unique styles and techniques pertinent to sympathy floral designs will be taught. The use of color and how to combine different flowers for different effects, traditional and modern ways will be introduced. The course will also teach how to use accessories, appropriate use for sympathy cards, and developing a good working relationship with funeral floral buyers or funeral directors. **(All supplies included in fees). No class on 3/10 thru 3/15.**

Course **SDG 915.** Equivalent to WECM course FMKT 1010.

27008 Tue Thu 6 to 9pm **Jan 16 to Jan 30** Valle Verde B151

### Wedding Floral Techniques. / \$ 160 / 21 hrs / 2.1 CEUs

Unique style and techniques pertinent to the application of floral wedding design. Includes the use of color and how to combine different flowers and accessories for different effects. Also covers steps in creating bridal boutiques, corsages, hairpieces, ad accessory construction.

**No class on 3/10 thru 3/15.**

Course **SDG 202.** Equivalent to WECM course FMKT 1015.

26955 Tue Thu 6 to 9pm **Feb 25 to Mar 25** Valle Verde B151

### Flower Shop Management. / \$ 160 / 21 hrs / 2.1 CEUs

Modern principles and practices used in the management and operations of retail florist shops. Topics include the structure of the industry, shop location, business plan organization, marketing methods, and management practices. **(Supplies included in fee).**

Course **SDG 203.** Equivalent to WECM course FMKT 2035.

26464 Tue Thu 6 to 9pm **Apr 8 to Apr 29** Valle Verde B151

## EPCC in Partnership with ed2go

are offering the following online courses:

Please visit ED2GO at [www.ed2go.com/epcc](http://www.ed2go.com/epcc) for many other course offerings.

### *Fundamental Courses 24 Hrs.*

#### Computers

- Advanced Microsoft Excel 2019
- Introduction to Microsoft Access 2019
- Introduction to Microsoft Excel 2019
- Intermediate Microsoft Excel 2019



- Distribution and Logistics Management
- Fundamentals of Supervision and Management
- Business Budgeting for Beginners
- Getting Started with Google Workspace
- Real Estate Investing

#### Computer Programming

- Designing Effective Websites
- How to get Started in Game Development
- Introduction to C# Programming
- Introduction to CSS3 and HTML5
- Introduction to Java Programming
- Introduction to Python 3 Programming
- Wireless Network

#### Business

- Administrative Assistant Fundamentals
- Become a Grant Writing Consultant
- Computer Skills for the Workplace

## Career Training Programs Certification

### Online Career Training Programs

These 6 to 18 month programs are online, self-pace instruction that prepare students for industry certification or any career. Below is a limited sample of courses that are been offered. See ED2GO at [careertraining.epcc.edu](http://careertraining.epcc.edu) for more course offerings.

- Freight Broker/Agent Training (6 Months)
- Chartered Tax Professional (18 Months)
- Certified Residential Interior Designer (6 Months)
- Certified Paralegal (12 Months)
- Child Development Associate (6 Months)
- Python Developer (6 Months)
- Microsoft Excel Certification Training (6 Months)
- Certified Bookkeeper (6 Months)
- Certified Professional Life Coach (6 Months)
- HR Professional with Payroll Practice and Management (6 Months)
- Human Resources Professional (6 Months)
- Travel Agent Training (6 Months)
- Certified Java Developer (6 Months)





# Health and Fitness

**Cheryl Stiles**, Director.

For more information, email [cehealthprogams@epcc.edu](mailto:cehealthprogams@epcc.edu), or call 915 831-7820 or 7831.

## General information for Continuing Education Health Courses

**These courses have prerequisites** or admission requirements mandated by federal law, state law, and local clinical affiliates.

### Course prerequisites include

- 1 **Immunizations.** Hepatitis B, Varicella, Measles, Mumps, Rubella, seasonal flu, Tetanus, Diphtheria, Pertussis or (TDAP), and the two-step tuberculosis skin test.
- 2 **Positive blood titers.** Students with a hospital clinical rotation must have positive blood titers for hepatitis B, varicella, measles, mumps, and rubella. COVID-19 vaccinations may be required by some clinical facilities.
- 3 **Physical exam** by a physician, physician's assistant, or nurse practitioner licensed to practice in the United States.
- 4 **Background clearance.** Use the approved EPCC vendor American Databank, at [elpasoex.com](http://elpasoex.com). Complete this once you have a seat reserved in class.
- 5 **Drug screen.** Use the approved EPCC vendor American Databank, at [elpasoex.com](http://elpasoex.com). Complete this once you have a seat reserved in class.
- 6 **Basic Life Support Provider certification** from the American Heart Association.
- 7 **Community-Wide Orientation.** Go to [epcc.edu/admissions/orientation/community-wide-orientation](http://epcc.edu/admissions/orientation/community-wide-orientation) for this.
- 8 **HIPAA training.** Go to [epcc.edu/academics/health/hipaa](http://epcc.edu/academics/health/hipaa) for this.
- 9 **Course-specific requirements.** Some courses have reading level, high school diploma, or GED requirements. ( Some classes require first aid certification. ) Reading level can be proven by prior college coursework or by placement at college-level English Language Arts Reading by TSIA2 or equivalent. Get tested at any EPCC testing services center.
- 10 **Buy the Compro tracking system.** EMT students must purchase Compro from American Databank to help you be compliant with CPR, first aid, immunizations, physical exam, and the like. This system keeps your clinical data updated and compliant. For more information, call Cynthia Kabariti at 915 831-7075. For information about requirements, call 915 831-7830.

## BLS Renewal and First Aid

**BLS Basic Life Support.** / \$ 66 / 5 hrs

This American Heart Association course presents initial CPR for infants, children, and adults, and includes foreign-body airway obstruction, barrier devices, and AED automated external defibrillation training. It meets EPCC specialized admission requirements for health students. **Book provided in class.** ( Don't wear shorts, dresses, halter tops or skirts to class. )

Course **SDH 762.**

26552	Sat 8am to 1pm	<b>Jan 11</b>	Rio Grande A245
26553	Thu 8am to 1pm	<b>Jan 16</b>	Admin Svc Ctr B323
26554	Sat 8am to 1pm	<b>Jan 18</b>	Rio Grande A245
26555	Sat 8am to 1pm	<b>Jan 25</b>	Rio Grande A245
26556	Tue Thu 530 to 8pm	<b>Jan 28 and Jan 30</b>	ASC B-322
26557	Sat 8am to 1pm	<b>Feb 1</b>	Rio Grande A245
26558	Sat 8am to 1pm	<b>Feb 8</b>	Rio Grande A245
26559	Tue Thu 530 to 8pm	<b>Feb 11 and Feb 13</b>	Admin Svc Ctr B322
26560	Sat 8am to 1pm	<b>Feb 15</b>	Rio Grande A245
26561	Sat 8am to 1pm	<b>Feb 22</b>	Rio Grande A245
26562	Sat 8am to 1pm	<b>Mar 1</b>	Rio Grande A245
26563	Tue Thu 530 to 8pm	<b>Mar 18 and Mar 20</b>	Admin Svc Ctr B322
26564	Sat 8am to 1pm	<b>Mar 22</b>	Rio Grande A245
26565	Sat 8am to 1pm	<b>Mar 29</b>	Rio Grande A245
26566	Tue Thu 8am to 1pm	<b>Apr 1 and Apr 3</b>	Admin Svc Ctr B322
26567	Sat 8am to 1pm	<b>Apr 5</b>	Rio Grande A245
26571	Tue Thu 530pm to 8pm	<b>Apr 8 and Apr 10</b>	Admin Svc Ctr B322
26572	Wed 4 to 9pm	<b>Apr 9</b>	Admin Svc Ctr B322
26573	Sat 8am to 1pm	<b>Apr 12</b>	Rio Grande A245
26574	Tue Thu 530 to 8pm	<b>Apr 15 and Apr 17</b>	Admin Svc Ctr B322
26575	Fri 8am to 1pm	<b>Apr 25</b>	Admin Svc Ctr B323
26576	Sat 8am to 1pm	<b>Apr 26</b>	Rio Grande A245
26577	Wed 8am to 1pm	<b>Apr 30</b>	Admin Svc Ctr B322
26578	Sat 8am to 1pm	<b>May 3</b>	Rio Grande A245
26579	Fri 8am to 1pm	<b>May 9</b>	Admin Svc Ctr B323
26580	Sat 8am to 1pm	<b>May 17</b>	Rio Grande A245
26581	Tue Thu 530 to 8pm	<b>May 20 and May 22</b>	Admin Svc Ctr B322
26582	Sat 8am to 1pm	<b>May 31</b>	Rio Grande A245

**BLS Renewal.** / \$ 64 / 4 hrs

Basic Life Support review updates CPR skills, extending certification two years. **Prerequisite:** Must be BLS certified. Bring current BLS provider card to class. **Book provided.** ( Don't wear shorts, dresses, halter tops or skirts to class. )

Course **SDH 760.** \*

26583	Fri 8am to noon	<b>Jan 10</b>	Admin Svc Ctr B323
26584	Sat 8am to noon	<b>Jan 18</b>	Rio Grande B205
26585	Wed 530 to 930pm	<b>Jan 22</b>	Admin Svc Ctr B322
26586	Sat 8am to noon	<b>Feb 1</b>	Rio Grande B205
26587	Sat 8am to noon	<b>Feb 15</b>	Rio Grande B205
26588	Wed 5:30 to 9:30pm	<b>Feb 26</b>	Admin Svc Ctr B322
26589	Sat 8am to noon	<b>Mar 1</b>	Rio Grande B205
26590	Sat 8am to noon	<b>Mar 22</b>	Admin Svc Ctr B445
26591	Wed 530 to 930pm	<b>Mar 26</b>	Admin Svc Ctr B322
26592	Fri 8am to noon	<b>Apr 11</b>	Admin Svc Ctr B323
26593	Sat 8am to noon	<b>Apr 12</b>	Rio Grande B205
26594	Wed 8am to noon	<b>Apr 23</b>	Admin Svc Ctr B323
26595	Sat 8am to noon	<b>Apr 26</b>	Rio Grande B205
26596	Sat 8am to noon	<b>May 3</b>	Rio Grande B205
26597	Sat 8am to noon	<b>May 17</b>	Rio Grande B205
26598	Fri 8am to noon	<b>May 23</b>	Admin Svc Ctr B323

**Must be BLS certified to enroll.** Bring current provider card to class.



## First Aid. / \$ 75 / 8 hrs

Properly applied first aid may mean the difference between life and death. Emphasizes fundamental principles and skills of standard first aid.

**Prerequisite:** Current BLS provider certification. **Note: Students will receive an instruction sheet in class with an Access Code to redeem First Aid e-book. Cost of e-book is included in tuition.** CPR card must be brought to class. **One hour lunch at instructor's discretion.**

Course **SDH 971.** Equivalent to WECM course EMSP 1026.

26599	Sat 8am to 5pm	<b>Jan 11</b>	Rio Grande B210
26600	Fri 8am to 5pm	<b>Jan 17</b>	Admin Svc Ctr B323
26601	Tue Thu 530 to 930pm	<b>Jan 21 and Jan 23</b>	Rio Grande A245
26602	Sat 8am to 5pm	<b>Jan 25</b>	Rio Grande B210
26603	Sat 8am to 5pm	<b>Feb 8</b>	Rio Grande B205
26604	Tue Thu 530 to 930pm	<b>Feb 18 and Feb 20</b>	Rio Grande B205
26605	Sat 8am to 5pm	<b>Feb 22</b>	Rio Grande B205
26606	Tue Thu 530 to 930pm	<b>Mar 4 and Mar 6</b>	Rio Grande B205
26607	Sat 8am to 8pm	<b>Mar 22</b>	Rio Grande B205
26608	Sat 8am to 8pm	<b>Mar 29</b>	Rio Grande B210
26609	Fri 8am to 5pm	<b>Apr 4</b>	Admin Svc Ctr B323
26610	Sat 8am to 5pm	<b>Apr 5</b>	Rio Grande B205
26611	Sat 8am to 5pm	<b>Apr 12</b>	Rio Grande B210
26612	Wed 8am to 5pm	<b>Apr 16</b>	Rio Grande A236
26613	Tue Thu 530 to 930pm	<b>Apr 22 and Apr 24</b>	Rio Grande B205
26614	Sat 8am to 5pm	<b>Apr 26</b>	Rio Grande B210
26615	Tue Thu 530 to 930pm	<b>Apr 29 and May 1</b>	Rio Grande B205
26616	Fri 8am to 5pm	<b>May 2</b>	Admin Svc Ctr B323
26617	Sat 8am to 5pm	<b>May 3</b>	Rio Grande B210
26618	Tue Thu 530 to 930pm	<b>May 13 and May 15</b>	Rio Grande B205
26619	Sat 8am to 5pm	<b>May 31</b>	Rio Grande B205

Must be **BLS certified** to enroll. Bring current provider card to class.

## CPR and First Aid for Industry. / \$ 95 / 8 hrs

Are you or your employees prepared to handle injuries that occur on the job? Introduces adult CPR and the basic principles of standard first aid. It will be customized to address the types of injuries which might occur in your workplace using the Emergency Care and Safety Institute Standards. The course can be taught at your location or at EPCC. The Emergency Care Safety Institute First Aid, CPR and AED textbook is included in the cost of the course. Call 915 831-7831 to schedule the course.

Course **SDH 252.** Equivalent to WECM course EMSP 1026.

## Clases de RCP en Español

### RCP : Resucitación Cardiopulmonar En Español.

/ \$ 66 / 5 hrs

Este curso de la Asociación Americana del Corazón incluye Resucitación Cardiopulmonar, o RCP, para infante y adulto, obstrucciones de las vías aéreas, barreras de protección personal y uso de desfibriladores externos automaticos. El libro se dara en clase. El costo del libro esta incluido en el precio del curso. Favor de no llevar puesto pantalon corto, falda ó vestido.

Course **SDH 762.**

26620	Miercoles 8am to 1pm	<b>Jan 15</b>	Rio Grande A232
-------	----------------------	---------------	-----------------



## Renovación de RCP. / \$ 64 / 4 hrs

Repaso del curso de proveedor de soporte vital básico para actualizar sus habilidades de RCP y extender la certificación por dos años.

Requisito previo: Tener una certificación BLS actual para inscribirse en esta clase. La tarjeta de proveedor de BLS actual debe traerse a clase. Nota: El libro se entregará en clase. El costo del libro está incluido en el precio del curso. Los estudiantes no deben usar pantalones cortos, vestidos o faldas en clase.

Course **SDH 760.\***

26622	Sabado 8am to noon	<b>Mar 1</b>	Rio Grande A232
-------	--------------------	--------------	-----------------

## Dental

El Paso Community College offers the following dental courses to meet TSBDE ( tsbde.texas.gov ) continuing education requirements for professional development and patient safety.

A Dental Assistant must have at least 2 years of experience and a current CPR certification. Provide proof of CPR certification and experience to the Continuing Education for Health office by emailing [sdiaz5@epcc.edu](mailto:sdiaz5@epcc.edu) or by faxing letters to 915 831-7853.

**Requirements** for Coronal Polishing and Pit and Fissure Sealant Application classes. For the clinical portion, students must

- 1 Wear scrubs and bring a lab coat. These may be disposable.
- 2 Bring protective eyewear, which must cover prescription eyewear.
- 3 Bring a sterilized straight hand piece, for Coronal Polishing class only.

Patient information for students enrolled in the Pit and Fissure Sealant Application clinical portion includes

- 1 Students must bring a patient with 4 qualifying teeth and current radiographs within the last six months. If the patient is under the age of 18, they must have a parent or legal guardian present.
- 2 Patients must arrive at the EPCC dental clinic at 1pm, and must be able to stay for the remainder of the afternoon.

## Coronal Polishing. / \$ 237 / 8 hrs / 0.8 CEUs

Includes a brief discussion of the techniques and safety considerations of coronal polishing. Hands-on instruction in the performance of coronal polishing techniques is included.

Course **AHD 101.**

26623	Sat 8am to 5pm	<b>Feb 8</b>	Rio Grande H118
26624	Sat 8am to 5pm	<b>Mar 29</b>	Rio Grande H118

## Pit and Fissure Sealant Application.

/ \$ 249.50 / 8 hrs / 0.8 CEUs

Includes a brief discussion of the techniques, materials, and safety considerations for the placement of pit and fissure sealants. Also includes hands-on instruction in the application of sealants.

Course **AHD 102.**

26625	Sat 8am to 5pm	<b>Feb 22</b>	Rio Grande H118
26626	Sat 8am to 5pm	<b>Apr 5</b>	Rio Grande H118

### Nitrous Oxide Sedation Monitoring and Exam.

/ \$ 200 / 8 hrs / 0.8 CEUs

In accordance with state rules, this course has been approved by TSBDE, the Texas State Board of Dental Examiners. Includes a discussion of safety considerations and legal aspects of nitrous oxide sedation, with an emphasis on the role and responsibilities in the monitoring of nitrous oxide sedation.

Course **AHD 100.**

26627 Sat 8am to 5pm **Apr 26** Admin Svc Ctr B322

## Emergency Medical Services

### ACLS : Advanced Cardiac Life Support.

/ \$ 240 / 12 hrs / 1.2 CEUs

Skill development for professional personnel practicing in critical care units, emergency departments, and paramedic ambulances. Establishes a system of protocols for management of patients experiencing cardiac difficulties.

**Prerequisite:** Must hold current BLS Provider certification. One hour lunch at instructor's discretion. **Textbook provided in class.**

Course **SDH 929.** Equivalent to WECM course EMSP 1019.

26628 Sat 8am to 5pm **Jan 18 to Jan 19** Admin Svc Ctr B323  
Sun 8am to noon

26629 Sat 8am to 5pm **May 17 to May 18** Admin Svc Ctr B323  
Sun 8am to noon

### Advanced Cardiac Life Support Refresher.

/ \$ 160 / 8 hrs / 0.8 CEUs

Refresher course for professional personnel practicing in critical care units, emergency departments, and paramedic ambulances. Reviews the system of protocols for management of patients experiencing cardiac difficulties.

**Prerequisite:** Must hold current BLS Provider and ACLS certifications. One hour lunch at instructor's discretion. **Textbook provided in class.**

Course **SDH 886.** Equivalent to WECM course EMSP 2036.

26630 Sat 8am to 5pm **Mar 22** Admin Svc Ctr B323

### PALS : Pediatric Advanced Life Support.

/ \$ 330 / 16 hrs / 1.6 CEUs

A system of protocols for management of the pediatric patient experiencing difficulties in medical and trauma-related emergencies. Allows health care professionals involved in the care of pediatric patients to practice and improve their knowledge and skills in pediatric assessment and resuscitation.

**Prerequisite:** Must hold current BLS Provider certification. One hour lunch at instructor's discretion. **Textbook provided.**

Course **SDH 892.** Equivalent to WECM course EMSP 1047.

26631 Sat Sun 8am to 5pm **Feb 15 to Feb 16** Admin Svc Ctr B323



### PALS : Pediatric Advanced Life Support Refresher.

/ \$ 160 / 8 hrs / 0.8 CEUs

A review of the PALS course allows health care professionals involved in the care of pediatric patients to review, practice, and improve their knowledge and skills in pediatric assessment and resuscitation. **Prerequisite:** Must hold current BLS Provider and PALS certifications. One hour lunch at instructor's discretion. **Textbook provided in class.**

Course **SDH 653.** Equivalent to WECM course EMSP 2036.

26632 Sat 8am to 5pm **Mar 29** Admin Svc Ctr B323

## Emergency Medical Technician

To register for the following concurrent EMT courses, students must email to Cynthia Kabariti at [cavila12@epcc.edu](mailto:cavila12@epcc.edu) the following prerequisites. ( Call 915 831-7075 for more information. )

- \* High school diploma or GED.
  - \* Proof of 12th grade reading level.
  - \* BLS certification card certified within the last six months.
  - \* Copy of current health insurance.
  - \* Complio immunizations tracker.
- See page 9 for further requirements.

## EMT Basic

This two-part course covers the principles and skills of pre-hospital emergency medical care. The clinical includes ambulance and hospital experience. Upon successful completion, student can take the State Certification Exam for EMT-Basic.

**Student must enroll for SDH 884 and 872 concurrently.**

**Conc** indicates a concurrent course open to both degree-plan and CE students. It is limited to age 17 or older. See page 53.

### Emergency Medical Technician Basic.

/ \$ 685 / 160 hrs / 16.0 CEUs

Introduces the level of EMT Emergency Technician Basic. Includes skills necessary to provide emergency medical care at a basic life support level with an ambulance service or other specialized services. **Corequisite:** SDH 872, Clinical Emergency Medical Technology / Technician I. You are strongly urged to take Anatomy and Physiology if you plan to take advanced EMT courses.

Course **SDH 884.** Equivalent to WECM course EMSP 1001.

Conc 26633 Lecture Mon Wed Fri 8 to 1120am **Jan 21 to May 16** MDP D146  
( Lab to be announced. )

Conc 26634 Lecture Tue Thu 8am to 1pm **Jan 21 to May 16** MDP D146  
( Lab to be announced. )

Conc 26635 Lecture Tue Thu 8am to 1pm **Jan 21 to May 16** MDP D146  
( Lab to be announced. )

### Clinical Emergency Medical Technology / Technician I.

/ \$ 173.50 / 80 hrs / 8.0 CEUs

Provides a health-related, work-based learning experience enabling students to employ specialized occupational theory, skills, and concepts. A clinical professional provides direct supervision. **Corequisite:** SDH 884, EMT : Basic.

Course **SDH 872.** Equivalent to WECM course EMSP 1060.

Conc 26636 Mon to Sun TBA **Jan 21 to May 16** Mission Del Paso D134

Conc 26637 Mon to Sun TBA **Jan 21 to May 16** Mission Del Paso L151

Conc 26638 Tue to Thu TBA **Jan 21 to May 16** Mission Del Paso L151

# General Health Courses

**Conc** indicates a concurrent course open to both degree-plan and CE students. It is limited to age 17 or older. See page 53.

## Essentials of Medical Terminology. Online.

/ \$ 324 / 32 hrs / 3.2 CEUs

Studies common medical terminology, word origin, structure, and application.

Course **AHP 792**. Equivalent to WECM course HPRS 1006.

Conc 26639 Time tba. **Jan 21 to May 16** Online.

## Essentials of Medical Terminology.

/ \$ 274 / 32 hrs / 3.2 CEUs

Studies common medical terminology, word origin, structure, and application.

Course **AHP 809**. Equivalent to WECM course HPRS 1006.

Conc 26640 Mon Wed 11 to 1150am **Jan 22 to May 14** Transmountain 1807

Conc 26641 Mon Wed 1 to 150pm **Jan 22 to May 14** Rio Grande A126

Conc 26642 Sat 8 to 950am **Jan 25 to May 18** Rio Grande A127

## Interpretation of Lab Results. ( Online. )

/ \$ 324 / 32 hrs / 3.2 CEUs

Introduces interpretation of commonly ordered laboratory test results used to evaluate patient's status.

Course **AHP 510**. Equivalent to WECM course HPRS 1009.

Conc 26643 Time TBA **Jan 21 to May 16** Online

El Paso Community College, in partnership with Ed2Go, offers 6-week online courses designed to assist you in beginning or advancing your health education. We are also offering wellness classes.

### Here are a few examples.

- \* Spanish for Medical Professionals, I and II.
- \* Medical Math.
- \* Certificate in End Life Care.
- \* Certificate in Gerontology.
- \* Certificate in Infectious Diseases and Infection Control.
- \* Certificate in Healthy Aging.
- \* Hipaa Compliance.
- \* TEAS Prep Series.
- \* Lose Weight and Keep It Off.
- \* Introduction to Natural Healing.
- \* Certificate in Energy Medicine.
- \* Certificate in Complementary and Alternative Medicine.
- \* Certificate in Food, Nutrition, and Health.

Go to the Ed2go Catalog at [ed2go.com/epcc](http://ed2go.com/epcc) for more information, details, and many more courses.

## Medication Aide

### Continuing Education Rules for Medication Aides.

The Texas Health and Human Services Commission (THHSC), requires that medication aides attend a seven-hour Medication Aide Update course to maintain certification. THHSC recommends that medication aides take the update course at least 90 days prior to the expiration date of their permit. Students must bring their Medication Aide permit number to class, so the hours can be reported to THHSC.

Go to [txhhs.my.site.com/tulip/login](http://txhhs.my.site.com/tulip/login) for more information about the renewal licensing process and a link to the Tulip login page.

### Medication Aide Update. / \$ 70 / 7 hrs / 0.7 CEUs

Fulfills the annual renewal requirements for Certified Medication Aides according to specifications of the Texas Health and Human Services Commission. Students must register 2 weeks before the start of class.

Course **AHP 802**. Equivalent to WECM course NURA 1041.

26644 Sat 9am to 5pm **Feb 8** Rio Grande A236

26645 Sat 9am to 5pm **Apr 5** Rio Grande A236

### Medication Aide. / \$ 500 / 140 hrs / 14.0 CEUs

Approved by the Texas Health and Human Services Commission, this course prepares Certified Nurse Aides to administer routine medications to persons in a Skilled Nursing Facility, MHMR facility, correctional institution, or personal care facility. The course is designed for individuals who work directly with patients in a health care setting under the supervision of a nurse. The course will also address the responsibilities associated with the preparation and administration of designated medications.

The course prerequisites are

- \* **Aged 18 years** at minimum
- \* **High school diploma** or GED
- \* **Social Security card** and a Nurse Aide License
- \* **College level coursework** 10th-grade reading level -- tested
- \* **Clearance letter from current employer** stating student is free of communicable diseases and in suitable physical, and emotional health to safely administer medication
- \* **Employment** in a long-term care facility allowing student to complete a 10-hour clinical at this location
- \* **Fingerprint-based criminal history check** by the Department of Public Safety, paid for through the DPS vendor at [dps.texas.gov/section/crime-records](http://dps.texas.gov/section/crime-records)
- \* **Textbook and drug handbook**, which must be brought to the first day of class. Buy these at the Rio Grande campus bookstore.

After these prerequisites are presented to the division office, students are admitted on a first-come first-served basis. Class is limited to 12 students.

Course **AHP 801**. Equivalent to WECM course NURA 1013.

26646 Mon Tue 530 to 930pm **Jan 13 to May 27** Rio Grande A-236



## Nursing Refresher

Includes a 16-week online instruction course through Austin Community College, a skills lab review course, and a clinical preceptorship appropriate for both RNs and LVNs. Nurses review basic medical surgical nursing knowledge and skills in preparation for returning to the clinical setting.

Students will take an online theory portion with Austin Community College and the Nursing Skills Lab Review at EPCC, and for the clinical portion will be placed in a local hospital with a preceptor.

This course is designed for:

- 1 Currently-licensed RN or LVN nurses who have been away from the clinical setting for a period of time, and who want a good medical or surgical refresher before going back to the clinical setting.
- 2 Nurses applying for reinstatement of their Texas nursing license who need or are required to complete a nursing refresher course
- 3 Nurses from another state or country applying for Texas nursing licensure, and are required to complete a nursing refresher course.

See page 9 for a list of prerequisites that need to be submitted to the Continuing Education office at the Administrative Services Center, Room B-425.

**Reentry Nursing Update.** Online. / 128 hrs

**LVN Refresher Theory.** Online. / 128 hrs

Interested students should contact Wendy Pickard, Nurse Reentry Program Coordinator at Austin Community College, at [wpickard@austincc.edu](mailto:wpickard@austincc.edu) or at 512 223-7119. Go to [continue.austincc.edu/nursing](http://continue.austincc.edu/nursing) for further information on course and registration.

**Professional Nursing Review.** / \$ 200 / 18 hrs / 1.8 CEUs

Course **AHP 354.** Equivalent to WECM course RNSG 2030.

Times and dates TBA

Rio Grande Nursing Lab

**Clinical : Licensed Practical / Vocational Nursing Training.**  
/ \$ 300 / 80 hrs / 8.0 CEUs

Course **AHP 803.** Equivalent to WECM course VNSG 1060.

Times and dates TBA.

Local hospital

**Clinical : Nursing Registered Nurse Training.**

/ \$ 300 / 80 hrs / 8.0 CEUs

Course **AHP 804.** Equivalent to WECM course RNSG 1060.

Times and dates TBA.

Local hospital

Call 915 831-7830 for further information.



## Nursing Assistant

Interested in a health career? The nursing assistant course is an excellent starting place. Nursing assistants are the caregivers who help patients of all ages perform the most basic day-to-day tasks. Nursing assistant is one of the fastest growing occupations in the nation. **Prerequisites for this course are listed on page 9.** Student MUST have book on the first class. Student must be 17 years old by the first day of class. \*Please contact division office for clarification of prerequisites.

Proof of prerequisites must be submitted to the Continuing Education office prior to registration.

Call 915 **831-7831** or email [cehealthprograms@epcc.edu](mailto:cehealthprograms@epcc.edu) for more.

**Nursing Assistant Theory.** / \$ 350 / 120 hrs / 12.0 CEUs

Presents the concepts and skills required to provide basic patient care in a health care facility or in a person's home. Topics include patient's rights, communication, safety, observation, reporting, and assisting patients in maintaining basic comfort and safety. Emphasis on effective interaction with members of the health care team.

Course **AHP 117.** Equivalent to WECM course NURA 1091.

26647 Mon to Fri 8am to 3pm **Jan 21 to Feb 14** Rio Grande A236

26648 Mon to Fri 8am to 3pm **Mar 17 to Apr 11** Rio Grande A236

26649 Mon to Fri 8am to 3pm **Apr 28 to May 23** Rio Grande A236

**Nursing Assistant Clinical.** / \$ 350 / 80 hrs / 8.0 CEUs

A work-based learning direct patient care experience that allows students to apply knowledge learned in the Nursing Assistant class. **Note:** Students must pay Professional Practice Insurance fee within the semester of the clinical.

Course **AHP 118.** Equivalent to WECM course NURA 1060.

26650 Mon to Fri 630am to 330pm **Feb 17 to Feb 28** Private facility

26651 Mon to Fri 630am to 330pm **Apr 14 to Apr 25** Private facility

26652 Mon to Fri 630am to 330pm **May 27 to Jun 6** Private facility

## Pharmacy Technician

**Conc** indicates a concurrent course open to both degree-plan and CE students. It is limited to age 17 or older. See page 53.

## Concurrent Pharmacy Courses

**Pharmacy Terminology.** / \$ 300 / 32 hrs / 3.2 CEUs

Provides a study of word origins and structure through the introduction of prefixes, suffixes, and root words as it relates to a pharmaceutical setting. Focuses on translation and recognition of commonly used pharmacy abbreviations.

Course **AHP 393.** Equivalent to WECM course PHRA 1015.

Conc 26653 Day and times TBA **Jan 21 to May 16** Online

**Pharmacy Drug Therapy and Treatment.** / \$ 682  
/ 96 hrs / 9.6 CEUs

Studies therapeutic agents, their classifications, properties, actions, and effects on the human body and their role in the management of disease. Provides detailed information regarding drug dosage, side effects, interactions, toxicities, and incompatibilities.

Course **AHP 777.** Equivalent to WECM course PHRA 1041.

Conc 26654 Mon Wed 10 to 1120am **Jan 22 to May 14** Rio Grande J655  
Lab TBA Hybrid online.



## Compounding Sterile Preparation and Aseptic Technique. / \$ 410 / 80 hrs / 8.0 CEUs

Studies the sterile products, legal and regulatory guidelines, hand-washing techniques, pharmaceutical calculations, references, safety techniques, aseptic techniques in parenteral compounding, proper use of equipment, preparation of sterile products, and safe handling of antineoplastic drugs. Permission from instructor is required for admission; call 915 831-4490.

Course **AHP 798**. Equivalent to WECM course PHRA 1045.

Conc 26655	Tue 8 to 950am	<b>Jan 22 to May 15</b>	Rio Grande J664
	Thu lab 8 to 1020pm		Rio Grande B308

## EKG Technician

### EKG Technician. / \$ 420 / 48 hrs / 4.8 CEUs

Includes practice and background information on anatomy and physiology of the heart, disease processes, medical terminology, medical ethics, legal aspects of patient contact, and laboratory assisting electrocardiography. Students practice with equipment in hands-on labs, which include the function and proper use of an EKG machine, 12-lead placement with proper placement upon the normal anatomy of the chest wall, and other clinical practices. Recommended for healthcare professionals such as CNAs, phlebotomists, EMTs, and medical assistants. **Prerequisites:** Must hold current BLS certification. **No class** on March 10, 12, and 31.

Course **AHP 552**. Equivalent to WECM course ECRD 1011. ....

26656	Mon Wed 10am to noon	<b>Jan 27 to Apr 28</b>	ASC
-------	----------------------	-------------------------	-----

## Phlebotomy Technician

### Phlebotomy Technician : Theory. / \$ 400 / 90 hrs / 9.0 CEUs

Prepares students for entry-level positions in phlebotomy and laboratory support services. Upon completion, students are eligible to sit for the phlebotomy technician examination offered by ASCP, the American Society of Clinical Pathology. The course presents principles and procedures, both theoretical and practical, associated with the collection of clinical blood specimens. Course includes anatomy and physiology of the cardiovascular system, specimen collection, processing and handling; laboratory operations (safety, QC, QA, etc), professionalism, ethics, legal issues, safety, infection control, and medical terminology. Skills learned include venipuncture, skin puncture, and special blood collections. **Prerequisites:** See page 9 for general requirements. Requires high school diploma or GED, and a tested 10th-grade reading level. **Corequisite:** You must take Phlebotomy Technician Clinical AHP 806 at the same time. Enrollment is limited to 24 students. Student must purchase the required textbook, scrubs, and an EPCC patch. For further information, call the division office at 915 831-7830.

Course **AHP 805**. Equivalent to WECM course PLAB 1023.

26657	Mon Wed 1 to 4pm	<b>Jan 22 to May 14</b>	Rio Grande J731
26658	Tue Thu 1 to 4pm	<b>Jan 21 to May 15</b>	Rio Grande J731

### Phlebotomy Technician Clinical. / \$ 300

/ 120 hrs / 12.0 CEUs

This course must be taken concurrently with AHP 805, Phlebotomy Technician Theory. Students will demonstrate venous and capillary blood drawing techniques and procedures required to perform as an entry level Phlebotomy Technician, based on Clinical and Laboratory Standards Institute (CLSI). Students will be required to travel to various clinical sites and be available for clinicals 12-15 hours per week for clinicals. **Corequisite:** Student must also enroll in Phlebotomy Technician Theory, AHP 805. **NOTE: Student must pay the Professional Practice insurance fee in the semester of the clinical.**

Course **AHP 806**. Equivalent to WECM course PLAB 1060.

26659	Mon Wed lab 5 to 8pm Mon to Sat, dates TBA	<b>Jan 27 to May 30</b>	Private facility
26660	Tue Thu lab 5 to 8pm Mon to Sat, dates TBA	<b>Jan 28 to May 30</b>	Private facility

## Patient Care Technician

### Patient Care Technician. / \$ 500 / 48 hrs / 4.8 CEUs

Prepares students for an entry-level position within a healthcare setting such as a hospital or subacute care setting. Patient Care Technicians care for injured, physically and mentally ill, disabled, and infirm patients. They perform routine tasks under the supervision of doctors, nurses and other medical professionals, monitor the patient's condition, and provide basic patient care. The PCT plays a vital role in the healthcare delivery team, and often have more patient contact than other team members, including doctors and nurses. **Prerequisites:** Nurse Assistant, Phlebotomy, and EKG Technician, or completion of courses in EMT and Medical Assistant.

Course **AHP 560**. Equivalent to WECM course NUPC 1020.

26661	Mon Wed 230 to 430pm	<b>Jan 27 to Apr 28</b>	Admin Svc Ctr B323
-------	----------------------	-------------------------	--------------------

## Journey to Wellness

### Preventing and Healing Burnout. / \$ 36 / 2 hrs

With our busy lives, burnout has become very common. You don't have to keep running on fumes. Learn techniques and strategies to identify the type of burnout you have, simple ways to regulate your nervous system to be able to relax, ways to improve sleep, how to bring more joy into your life, and how to take care of yourself to prevent further burnout.

Course **AHW 210**.

26662	Mon 6 to 8pm	<b>Feb 17</b>	Admin Svc Ctr B322
26663	Mon 6 to 8pm	<b>Apr 7</b>	Admin Svc Ctr B322

## Fitness

### Stretch and Rest - Yin Yoga. / \$ 100 / 12 hrs

Yin yoga involves holding passive poses for a long duration of time, which allows it to work deeply into our bodies. This type of yoga targets connective tissues such as ligaments, joints, and bones, as well as the deep fascia networks of the body and the meridians. Yin yoga is in contrast to Yang yoga, which targets the muscles. **No class** on March 11 and 13. Instructor is Tracy Searight.

Course **AHW 112**. \$100

26664	Tue Thu 530 to 630pm	<b>Jan 21 to Feb 27</b>	Valle Verde G102
26665	Tue Thu 530 to 630pm	<b>Mar 4 to Apr 17</b>	Valle Verde G102
26666	Tue Thu 530 to 630pm	<b>Apr 22 to May 29</b>	Valle Verde G102



### Belly Dance Fitness. / \$ 100 / 12 hrs

Introduces the fundamentals of belly dancing, providing a new type of fitness routine. Covers belly dance moves emphasizing proper posture and coordination, connecting with the pelvic floor while rooting the body. **No class** on March 11 and 13. Instructor is Sonia Flores.

#### Course AHW 111.

26667	Tue Thu 530 to 7pm	<b>Jan 28 to Feb 20</b>	Rio Grande J703
26668	Tue Thu 530 to 7pm	<b>Feb 25 to Mar 27</b>	Rio Grande J703
26669	Tue Thu 530 to 7pm	<b>Apr 8 to May 1</b>	Rio Grande J703

### Hatha Yoga. / \$ 100 / 12 hrs

Hatha Yoga releases tension and creates energy. Through yoga, cultivate the natural beauty of your body by attaining a high level of health. Learn the fundamental postures and breathing techniques used in yoga philosophy. Positive side effects include increased vitality, mental stimulation and rejuvenation, body tissue elasticity, and stress and trauma relief. Develop a treatment awareness of the individual as a whole. Find the potential for a lifetime of stress relief, and the emergence of hidden beauty and a more positive attitude. **No class on March 11 and 13.** Instructor is Maria Castillo.

#### Course AHW 101.

26670	Tue Thu 530 to 630pm	<b>Jan 14 to Feb 20</b>	Admin Svc Ctr B323
26671	Tue Thu 530 to 630pm	<b>Feb 25 to Apr 10</b>	Admin Svc Ctr B323
26672	Tue Thu 530 to 630pm	<b>Apr 15 to May 22</b>	Admin Svc Ctr B323

### Chair Pilates. / \$ 100 / 12 hrs

Pilates is a complete fitness for a higher quality of life. This chair-based, low-impact, safe and comfortable class improves muscles, flexibility, posture, and overall health, and targets key muscle groups to promote alignment and mobility. Enjoy improved balance, reduced joint pain, and an energy boost. **No class** on March 10, 12, and 13. Instructor is Maria Castillo.

#### Course AHW 100.

26673	Mon Wed 530 to 630pm	<b>Jan 22 to Mar 3</b>	Admin Svc Ctr B323
26674	Mon Wed 530 to 630pm	<b>Mar 17 to Apr 28</b>	Admin Svc Ctr B323

### Zumba. / \$ 100 / 12 hrs

Cardio dance workout with a Latin flair--Ditch the workout and join the party! The hottest and most exciting workout sizzling its way across America! Inspired by cumbia, salsa, and merengue music, people are falling in love with the music, easy-to-follow steps and body benefiting results. **No class on Jan 20, Mar 10 to 13, and Mar 31.** Instructor is Mari Lu Urrieta.

#### Course AHW 103.

26675	Mon to Thu 5 to 6pm	<b>Jan 13 to Feb 3</b>	Admin Svc Ctr A437
26676	Mon to Thu 6 to 7pm	<b>Jan 13 to Feb 3</b>	Online
26677	Mon to Thu 5 to 6pm	<b>Feb 4 to Feb 24</b>	Admin Svc Ctr A437
26678	Mon to Thu 6 to 7pm	<b>Feb 4 to Feb 24</b>	Online
26679	Mon to Thu 5 to 6pm	<b>Mar 3 to Mar 27</b>	Admin Svc Ctr A437
26680	Mon to Thu 6 to 7pm	<b>Mar 3 to Mar 27</b>	Online
26939	Mon to Thu 5 to 6pm	<b>Apr 1 to Apr 21</b>	Admin Svc Ctr A437
26940	Mon to Thu 6 to 7pm	<b>Apr 1 to Apr 21</b>	Online
26681	Mon to Thu 5 to 6pm	<b>Apr 22 to May 12</b>	Admin Svc Ctr A437
26682	Mon to Thu 6 to 7pm	<b>Apr 22 to May 12</b>	Online

### Abdominal and Weight Toning. / \$ 100 / 12 hrs

Would you like to lose inches around your waist and see some toning and muscle definition in your arms and abdomen? We will work on the abdomen for the first 30 minutes and weight toning for the second 30 minutes. You will see results within weeks. Wear shorts or comfortable workout clothes. Bring a yoga mat and a pair of 7-pound dumb bell weights to class. **No class on March 10, 12, and 31.** Instructor is Sergio Uranga.

#### Course AHW 104.

26683	Mon Wed 6 to 655pm	<b>Jan 22 to Mar 3</b>	Valle Verde G102
26684	Mon Wed 6 to 655pm	<b>Mar 17 to Apr 28</b>	Valle Verde G102

### Fitness Kickboxing. / \$ 100 / 12 hrs

Kickboxing develops skills necessary to improve cardiovascular fitness and safety awareness. Traditional kickboxing techniques will be introduced. Wear shorts or workout clothes, and bring a small towel and a water bottle to class. **No class** on March 10, 12, and 31. Instructor is Sergio Uranga.

#### Course AHW 105.

26685	Mon Wed 7 to 8pm	<b>Jan 22 to Mar 3</b>	Valle Verde G102
26686	Mon Wed 7 to 8pm	<b>Mar 17 to Apr 28</b>	Valle Verde G102

### Martial Art / Kenpo Karate. / \$ 100 / 12 hrs

Develop self-discipline and self-confidence. Covers conditioning, basics, and self defense techniques. By the end of the class students will be leaner, stronger, able to defend in any situation. **Students must wear a black or white karate uniform.** Bring a small towel and a water bottle to class. **No class** on March 15. Instructor is Sergio Uranga.

#### Course AHW 106.

26687	Sat 7 to 830am	<b>Feb 1 to Mar 29</b>	Valle Verde G102
-------	----------------	------------------------	------------------

### Golf. / \$ 100 / 6 hrs

Learn the fundamentals of golf and swing like a pro. Designed for all skill levels to improve the swing and lower the score. Class is held at Ascarate Park. **You must pay all park fees and buy your own range balls.** Instructor is PGA Golf professional Mike Smith.

#### Course AHW 110.

26688	Thu 7 to 830pm	<b>Apr 3 to Apr 24</b>	Ascarate Golf Course, 6900 Delta
-------	----------------	------------------------	----------------------------------



### Weight Training. / \$ 138 / 48 hrs

Presents weight lifting skills and techniques, such as proper sitting, exercise, breathing, spotting, and safety procedures. Reviews the history, terminology, and principles of weight training.

#### Course AHW 107.

Conc 26689	Mon Wed Fri 9-950 am	<b>Jan 22 to May 16</b>	Transmountain 1403
Conc 26690	Mon Wed Fri 9 to 950am	<b>Jan 22 to May 16</b>	Valle Verde G103
Conc 26691	Tue Thu 830 to 950am	<b>Jan 22 to May 15</b>	Valle Verde G103
Conc 26692	Tue Thu 530 to 650pm	<b>Jan 21 to May 15</b>	Valle Verde G103

### Conditioning. / \$ 138 / 48 hrs

Helps develop physical fitness such as flexibility, strength, and endurance through participation in calisthenics, aerobics, and jogging.

#### Course AHW 108.

Conc 26693	Mon Wed Fri 8 to 850am	<b>Jan 22 to May 16</b>	Transmountain 1404
Conc 26694	Tue Thu 1130a to 1250p	<b>Jan 21 to May 15</b>	Valle Verde G104
Conc 26696	Mon Wed 530 to 650pm	<b>Jan 22 to May 16</b>	Valle Verde G104

## Massage Therapy

The 525-hour Massage Therapy Certificate Program prepares students for state licensure through the Texas Department of Licensing and Regulation, emphasizing professionalism and safe practice. Administrative Service Center classes at 9050 Viscount are held in a state-of-the-art massage suite with classrooms, an internship room, and spa facilities. Students learn advanced techniques such as sports, prenatal, and spa massage.

The program admission requirements are

- : High school **diploma** or GED
- : **10th grade reading level** or above
- : Current American Heart Association **BLS certification**
- : Current **First Aid certification**
- : Vaccination for **meningitis** if under 22 years old, and
- : Attendance at an **orientation** session

**Note:** BLS Provider and First Aid courses will be scheduled specially for massage students two weeks before the start of the first massage course.

\*Financial assistance may be available for individuals who qualify. Complete the Free Application for Federal Student Aid (FAFSA) at [www.fafsa.ed.gov](http://www.fafsa.ed.gov) at least 8 weeks before registration.

### Massage Therapy Fundamentals.

/ \$ **758** / 125 hrs / 12.5 CEUs

Course **MSSG 1011.**

26697 Mon Wed 830am to 130pm **Feb 3 to May 7** Admin Svc Ctr B128

### Massage Therapy Fundamentals II.

/ \$ **532** / 75 hrs / 7.5 CEUs

Course **MSSG 2011.**

26698 Mon to Thu 830am to 130pm **May 12 to Jun 5** Admin Svc Ctr B128

### Kinesiology. / \$ **328** / 50 hrs / 5.0 CEUs

Course **MSSG 2013.**

26699 Tue Thu 330 to 630pm **Jan 14 to Mar 18** Admin Svc Ctr B128

### Anatomy and Physiology for Massage.

/ \$ **532** / 75 hrs / 7.5 CEUs

Course **MSSG 1013.**

26700 Tue Thu 330 to 630pm **Mar 20 to Jun 12** Admin Svc Ctr B128

### Health and Hygiene. / \$ **125** / 20 hrs / 2.0 ceus

Course **MSSG 1009.**

26701 Tue Thu 830am to 130pm **Feb 4 to Feb 13** Admin Svc Ctr B128

### Hydrotherapy / Therapeutic Modalities.

/ \$ **125** / 20 hrs / 2.0 CEUs

Course **MSSG 1005.**

26702 Tue Thu 830am to 130pm **Feb 18 to Feb 27** Admin Svc Ctr B128

### Pathology for Massage. / \$ **276** / 40 hrs / 4.0 CEUs

Course **MSSG 2014.**

26703 Tue 830am to 130pm **Mar 4 to Apr 29** Admin Svc Ctr B128

### Business Practices and Professional Ethics.

/ \$ **300** / 45 hrs / 4.5 CEUs

Course **MSSG 1007.**

26704 Thu 830am to 130pm **Mar 6 to May 8** Admin Svc Ctr B128

### Internship Massage Therapy / Therapeutic Massage.

/ \$ **374** / 75 hrs / 7.5 CEUs

Course **MSSG 2086.**

35401 Mon to Sun, times tba **Jun 7 to Jun 29** Admin Svc Ctr B141

## Weekend Class : July 2024 to May 2025.

### Massage Therapy Fundamentals.

/ \$ **758** / 125 hrs / 12.5 CEUs

Course **MSSG 1011.**

35110 Sat 130 to 530pm **Aug 3 to Nov 24** Admin Svc Ctr B128  
Sun 9am to 1pm

### Massage Therapy Fundamentals II.

/ \$ **532** / 75 hrs / 7.5 CEUs

Course **MSSG 2011.**

26238 Sat 130 to 530pm **Dec 7 to Jan 18** Admin Svc Ctr B128  
Sun 830am to 1230pm **Jan 25 to Mar 15**

### Kinesiology. / \$ **328** / 50 hrs / 5.0 CEUs

Course **MSSG 2013.**

35111 Wed 530 to 930pm **Jul 31 to Dec 23** Admin Svc Ctr B128

### Anatomy and Physiology for Massage.

/ \$ **532** / 75 hrs / 7.5 CEUs

Course **MSSG 1013.**

15964 Wed 530 to 930pm **Oct 30 to Mar 19** Admin Svc Ctr B128

### Health and Hygiene. / \$ **125** / 20 hrs / 2.0 CEUs

Course **MSSG 1009.**

35112 Sat 830am to 1230pm **Aug 3 to Sep 7** Admin Svc Ctr B128

### Hydrotherapy / Therapeutic Modalities.

/ \$ **125** / 20 hrs / 2.0 CEUs

Course **MSSG 1005.**

15965 Sat 130am to 530pm **Sep 14 to Oct 12** Admin Svc Ctr B128

### Pathology for Massage. / \$ **275** / 40 hrs / 4.0 ceus

Course **MSSG 2014.**

15966 Sat 830am to 1230pm **Oct 19 to Jan 11** Admin Svc Ctr B128

### Business Practices and Professional Ethics.

/ \$ **300** / 45 hrs / 4.5 CEUs

Course **MSSG 1007.**

26134 Sun 9am to 2pm **Dec 8** Admin Svc Ctr B128  
9am to 1pm **Dec 15 to Mar 2**

### Internship Massage Therapy / Therapeutic Massage.

/ \$ **374** / 75 hrs / 7.5 CEUs

Course **MSSG 2086.**

26705 Mon to Sun, times tba **Mar 22 to May 3** Admin Svc Ctr B141

## Weekend Class : May 2025 to Jan 2026.

### Massage Therapy Fundamentals.

/ \$ **758** / 125 hrs / 12.5 CEUs

Course **MSSG 1011.**

26967 Sat 830am to 1230pm **May 10 to Sep 21** Admin Svc Ctr B128  
Sun 9am to 1pm

### Health and Hygiene. / \$ **125** / 20 hrs / 2.0 CEUs

Course **MSSG 1009.**

26968 Tue Thu 130 to 530pm **May 10 to Jun 14** Admin Svc Ctr B128

### Kinesiology. / \$ **328** / 50 hrs / 5.0 CEUs

Course **MSSG 2013.**

26969 Wed 530 to 930pm **May 7 to Jul 30** Admin Svc Ctr B128

## Massage Therapy Fundamentals II.

/ \$ 532 / 75 hrs / 7.5 CEUs

Course **MSSG 2011.**

Sat 830am to 1230pm **Dates TBA** Admin Svc Ctr B128  
Sun 9am to 1pm

## Anatomy and Physiology for Massage.

/ \$ 532 / 75 hrs / 7.5 CEUs

Course **MSSG 1013.**

\$532

Wed 530 to 930pm **Dates TBA** Admin Svc Ctr B128

## Hydrotherapy/Therapeutic Modalities.

/ \$ 125 / 20 hrs / 2.0 CEUs

Course **MSSG 1005.**

\$125

Sat 130 to 530pm **Dates TBA** Admin Svc Ctr B128

## Pathology for Massage. / \$ 276 / 40 hrs / 4.0 CEUs

Course **MSSG 2014.**

Sat 130 to 530pm **Dates tba** Admin Svc Ctr B128

## Business Practices and Professional Ethics.

/ \$ 300 / 45 hrs / 4.5 CEUs

Course **MSSG 1007.**

Sat 130 to 530pm **Dates TBA** Admin Svc Ctr B128

## Internship Massage Therapy / Therapeutic Massage.

/ \$ 374 / 75 hrs / 7.5 CEUs

Course **MSSG 2086.**

Mon to Sun, times tba **Dates TBA** Admin Svc Ctr B141

## Continuing Education for Massage Therapists

Designed for massage therapist only.

## Myofascial Relationships of the Shoulder Girdle. / \$ 100

/ 8 hrs / 0.8 CEUs /

Is the shoulder girdle just the scapula? It's so much more! It acts as a pressure valve for the thoracic cavity, adjusting to pressure within the ribs. Pain patterns around the shoulder act as flashing red lights that announce imbalances. We explore the shoulder girdle's myofascial relationships to the ribs, arm, chest and organs as we come to understand its proper functions.

Course **AHP 558.** Equivalent to WECM course MSSG 2000.

26706 Fri 9am to 5pm **Jan 31** Admin Svc Ctr B141

## Nail Technician

This 624-hour program prepares individuals to join one of the fastest areas of growth in the cosmetology industry -- nail care. This growth has created the need for properly trained and licensed nail technicians. Our program emphasizes specialized training in safety, sanitation, state laws, rules and regulations, nail diseases and disorders, skin and nail care, and work ethics, and the curriculum meets the Texas Department of Licensing and Regulations cosmetology guidelines. **The program requires :**

- : A high school **diploma** or GED
- : Attendance at an **orientation** session
- : Vaccination for **meningitis** if under 22 years old, and
- : A valid US **identification** card

Call 915 **831-6547**, or email [cehealthprograms@epcc.edu](mailto:cehealthprograms@epcc.edu) for more.

## Weekday Class

### Orientation to Nail Technology. / \$ 1,025

/ 160 hrs / 16.0 CEUs

Course **CSME 1030.**

26708 Mon to Fri 830am to 5pm **Jan 21 to Feb 17** Admin Svc Ctr B120

### Manicuring and Related Theory. / \$ 1,025

/ 160 hrs / 16.0 CEUs

Course **CSME 1043.**

26709 Mon to Fri 830am to 5pm **Feb 18 to Mar 24** Admin Svc Ctr B120

### Nail Enhancements. / \$ 897 / 140 hrs / 14.0 CEUs

Course **CSME 2030.**

26710 Mon to Fri 830am to 5pm **Mar 25 to Apr 21** Admin Svc Ctr B120

### Principles of Nail Technology I. / \$ 718 / 112 hrs

/ 11.2 CEUs

Course **CSME 1031.**

26711 Mon to Fri 830am to 5pm **Apr 21 to May 8** Admin Svc Ctr B120  
830am to 1230pm **May 9**

### Preparation for the State Licensing Written Exam.

/ \$ 333 / 52 hrs / 5.2 CEUs

Course **CSME 2051.**

26712 Mon to Fri 1 to 5pm **May 9** Admin Svc Ctr B120  
830am to 5pm **May 12 to May 19**

## Evening and Weekend Class

### Orientation to Nail Technology. / \$ 1,025 /

160 hrs / 16.0 CEUs

Course **CSME 1030.**

26713 Mon Tue Wed 5 to 9pm **Jan 21 to Mar 17** Admin Svc Ctr B120  
Sat Sun 9am to 3pm

### Manicuring and Related Theory. / \$ 1,025

/ 160 hrs / 16.0 CEUs

Course **CSME 1043.**

26714 Mon Tue Wed 5 to 9pm **Mar 17 to May 7** Admin Svc Ctr B120  
Sat Sun 9am to 3pm

### Nail Enhancements. / \$ 897 / 140 hrs / 14.0 CEUs

Course **CSME 2030.**

26715 Mon Tue Wed 5 to 9pm **May 7 to Jun 22** Admin Svc Ctr B120  
Sat Sun 9am to 3pm

### Principles of Nail Technology I. / \$ 718

/ 112 hrs / 11.2 CEUs

Course **CSME 1031.**

35403 Mon Tue Wed 5 to 9pm **Jun 22 to Jul 28** Admin Svc Ctr B120  
Sat Sun 9am to 3pm

### Preparation for the State Licensing Written Exam.

/ \$ 333 / 52 hrs / 5.2 CEUs

Course **CSME 2051.**

35407 Mon Tue Wed 5 to 9pm **Jul 28 to Aug 12** Admin Svc Ctr B120  
Sat Sun 9am to 3pm

# Law Enforcement

**Barry Bogle**, Director. Call 915 **831-7118** for more information.

The Law Enforcement Training Academy is an approved training provider for Texas Commission on Law Enforcement and Texas Private Security Bureau. **You must register in person** at the Mission Del Paso Training Academy. **Day Academy** 8am to 5pm, **Evening** 6 to 10pm.

## Texas Peace Officer I. / \$ 800 / 176 hrs / 17.6 CEUs

Basic preparation for new peace officers. Must be taken in conjunction with Texas Peace Officer II, III, IV, and V to satisfy the TCOLE Texas Commission on Law Enforcement approved Texas Peace Officer Training Academy. Course includes fitness and wellness, history of policing, professionalism and ethics, constitutional law, the criminal justice system, Texas criminal laws, civil process, and stress management. **Prerequisites:** Must be at least 20 years of age upon entering the Academy, and must pass a state background check. Other restrictions apply. ( This course may be offered only by institutions licensed by TCOLE as a police academy. ) You must call the Training Academy at 915 831-7118 for application and pretesting.

Course **CJLE 1006.**

26717	Mon to Fri 8 to 5pm	<b>Jan 21 to Feb 21</b>	MDP Academy
-------	---------------------	-------------------------	-------------

## Texas Peace Officer II. / \$ 800 / 176 hrs / 17.6 CEUs

Basic preparation for new peace officers. Must be taken in conjunction with Texas Peace Officer II, III, IV, and V to satisfy the TCOLE Texas Commission on Law Enforcement approved Texas Peace Officer Training Academy. Course includes oral and written communications, use-of-force law and concepts, problem solving, multiculturalism, professionalism in policing approaches, patrol procedures, victims of crime, family violence, MHMR, crowd

management, hazmat, racial profiling, asset forfeiture, and TABC controlled substances and dangerous drugs. **Prerequisite:** Successful completion of Texas Peace Officer I. ( This course may be offered only by institutions licensed by TCOLE as a police academy. )

Course **CJLE 1012.**

26718	Mon to Fri 8 to 5pm	<b>Feb 24 to Apr 4</b>	MDP Academy
-------	---------------------	------------------------	-------------

## Texas Peace Officer III. / \$ 800 / 176 hrs / 17.6 CEUs

Basic preparation for new peace officers. Must be taken in conjunction with Texas Peace Officer II, III, IV, and V to satisfy the TCOLE Texas Commission on Law Enforcement approved Texas Peace Officer Training Academy. Course includes laws involving traffic laws and collision investigations, criminal investigation, ID theft, and SDST. **Prerequisite:** Successful completion of Texas Peace Officer II. ( This course may be offered only by institutions licensed by TCOLE as a police academy. )

Course **CJLE 1018.**

26719	Mon to Fri 8am to 5pm	<b>Apr 7 to May 9</b>	MDP Academy
26720	Mon to Fri 6 to 10pm	<b>Feb 3 to Apr 11</b>	MDP Academy

## Texas Peace Officer IV. / \$ 1,200 / 176 hrs / 17.6 CEUs

Basic preparation for new peace officers. Must be taken in conjunction with Texas Peace Officer II, III, IV, and V to satisfy the TCOLE Texas Commission on Law Enforcement approved Texas Peace Officer Training Academy. Course includes application of laws directly related to police field work. Requires the development of skills needed of a police officer to include patrolling, police driving, traffic stops, use of force, mechanics of arrest, firearms training, and emergency medical care. Applies the techniques and procedures used by officers to field situations. **Prerequisite:** Successful completion of Texas Peace Officer III. ( This course may be offered only by institutions licensed by TCOLE as a police academy. )

Course **CJLE 1024.**

26721	Mon to Fri 8am to 5pm	<b>May 12 to Jun 13</b>	MDP Academy
26722	Mon to Fri 6 to 10pm	<b>Apr 14 to Jun 13</b>	MDP Academy

## Texas Peace Officer V. / \$ 800 / 176 hrs / 17.6 CEUs

This introductory course provides basic preparation for a new peace officer. This course should be taken in conjunction with Texas Peace Officer I, II, III and IV to satisfy the Texas Commission on Law Enforcement (TCOLE) approved Basic Peace Officer Training Academy requirements and to satisfy local needs as determined by the local law enforcement community. The training course includes Police M-4 Patrol Rifle, Police Radar Certification, OC Certification, and Taser Certification. **Prerequisite:** Successful completion of Texas Peace Officer IV. ( This course may be offered only by institutions licensed by TCOLE as a police academy. )

Course **CJLE 1029.**

35405	Mon to Fri 8am to 5pm	<b>Jun 16 to Jul 18</b>	MDP Academy
35406	Mon to Fri 6 to 10pm	<b>Jun 16 to Aug 15</b>	MDP Academy

## Security Officers Basic Training. / \$ 190

/ 56 hrs / 5.6 CEUs

For people seeking employment as a commissioned, armed Texas security officer, in a curriculum established by the Texas DPS Private Security Bureau covering Level II and III training requirements, defensive tactics, and firearms training and qualifications. **Prerequisite:** Must be at least 18 years of age.

Course **SDE 811.** Equivalent to WECM course SLPS 1013.

26724	Mon to Fri 8am to 5pm	<b>Jan 9 to Jan 17</b>	MDP Academy
26725	Mon to Fri 8am to 5pm	<b>Jan 23 to Jan 31</b>	MDP Academy
26726	Mon to Fri 8am to 5pm	<b>Feb 6 to Feb 14</b>	MDP Academy
26727	Mon to Fri 8am to 5pm	<b>Feb 20 to Feb 28</b>	MDP Academy
26728	Mon to Fri 8am to 5pm	<b>Apr 3 to Apr 11</b>	MDP Academy
26729	Mon to Fri 8am to 5pm	<b>Apr 24 to May 2</b>	MDP Academy
26730	Mon to Fri 8am to 5pm	<b>May 15 to May 23</b>	MDP Academy

## Security Officer Basic Training II. / \$ 50 / 16 hrs / 1.6 CEUs

For people seeking employment as a non-commissioned, unarmed Texas security officer, in a curriculum established by the Texas DPS Private Security Bureau covering Level II training requirements. **Prerequisite:** Must be at least 18 years of age.

Course **SDE 803.** \$50

26731	Thu Fri 8am to 5pm	<b>Jan 9 to Jan 10</b>	MDP Academy
26732	Thu Fri 8am to 5pm	<b>Jan 23 to Jan 24</b>	MDP Academy
26733	Thu Fri 8am to 5pm	<b>Feb 6 to Feb 7</b>	MDP Academy
26734	Thu Fri 8am to 5pm	<b>Feb 20 to Feb 21</b>	MDP Academy
26735	Thu Fri 8am to 5pm	<b>Apr 3 to Apr 4</b>	MDP Academy
26736	Thu Fri 8am to 5pm	<b>Apr 24 to Apr 25</b>	MDP Academy
26737	Thu Fri 8am to 5pm	<b>May 15 to May 16</b>	MDP Academy





# Civilian Firearms Courses

**Barry Bogle**, Director. Call 915 **831-7122** for more information.

## Introduction to Firearms Safety. / \$ 15

/ 7 hrs / 0.7 CEUs

Designed to provide the basic knowledge and skills necessary for a gun owner to safely handle firearms. Exposes students to safety at home and on the firing range, teaching laws pertaining to use of force, and developing proficiency with handguns on the firing range. **Prerequisites:** Must be at least 18 years of age. Taught at Mission Del Paso Law Enforcement Academy. Must be 14 years of age with parent or guardian enrolled in class.

### Course **SDE 902.**

26756	Sat 9am to 4pm	<b>Jan 11</b>	MDP Academy
26757	Sat 9am to 4pm	<b>Feb 1</b>	MDP Academy
26758	Sat 9am to 4pm	<b>Mar 1</b>	MDP Academy
26759	Sat 9am to 4pm	<b>Apr 5</b>	MDP Academy
26760	Sat 9am to 4pm	<b>May 3</b>	MDP Academy

## Firearms / Range Use. Open entry. / \$ 40

/ 8 hrs / 0.8 CEUs

Firearm fundamentals for the general public. **Prerequisite:** weapon and ammunition must be provided by student. Taught at Mission Del Paso Law Enforcement Academy. Call 915 831-7118 for extra prerequisite information.

Course **SDE 206.** Equivalent to WECM course CJLE 1023.

## Firearms / Range Use. Open entry.

/ \$ 60 / 40 hrs / 4.0 CEUs

Range time for the general public. **Prerequisite:** weapon and ammunition must be provided by student. Taught at Mission Del Paso Law Enforcement Academy. Call 915 831-7118 for extra prerequisite information.

### Course **SDE 211.**

## Civilian Practical Pistol. / \$ 40 / 8 hrs / 0.8 CEUs

The next step up in training from basic firearms proficiency, and not a fundamental class. Student should shoot proficiently. Must already understand the seven fundamentals of shooting and the four safety rules. Includes working on shooting skill, weapon presentation, and getting the gun on target in a practical situation. Should have taken SDE 902, Introduction to Firearms Safety.

### Covered topics include

- \* Weapons carrying options pros and cons.
- \* Practical reloads under crisis conditions
- \* Weapons malfunction drills under crisis conditions : fail to feed, fail to fire, stovepipe, double feed
- \* Shooting controlled pairs
- \* Shooting failure drills and
- \* Shooting from cover

### Second weekend of every month

### Course **SDE 310.**

26761	Sat 8am to 5pm	<b>Jan 18</b>	Mission Del Paso
-------	----------------	---------------	------------------

## Security Officer Basic Training III. / \$ 140

/ 40 hrs / 4.0 CEUs

For people seeking employment as a commissioned, armed Texas security officer, in a curriculum established by the Texas DPS Private Security Bureau covering Level III training requirements, defensive tactics, and firearms training and qualifications. **Prerequisite:** Level II Certification.

### Course **SDE 805.**

26738	Mon to Fri 8am to 5pm	<b>Jan 13 to Jan 17</b>	MDP Academy
26739	Mon to Fri 8am to 5pm	<b>Jan 27 to Jan 31</b>	MDP Academy
26740	Mon to Fri 8am to 5pm	<b>Feb 10 to Feb 14</b>	MDP Academy
26741	Mon to Fri 8am to 5pm	<b>Feb 24 to Feb 28</b>	MDP Academy
26742	Mon to Fri 8am to 5pm	<b>Apr 7 to Apr 11</b>	MDP Academy
26743	Mon to Fri 8am to 5pm	<b>Apr 28 to May 2</b>	MDP Academy
26744	Mon to Fri 8am to 5pm	<b>May 19 to May 23</b>	MDP Academy

## In-Service Firearms Training for Security and

## Special Officers. / \$ 40 / 8 hrs / 0.8 CEUs

Satisfies the biennial requalifications requirements, plus required updates established by the Texas DPS Private Security Bureau for Level III certification. **Students must present certification card.**

### Course **SDE 204.**

26745	Wed 8am to 5pm	<b>Jan 29</b>	MDP Academy
26746	Wed 8am to 5pm	<b>Feb 26</b>	MDP Academy
26747	Wed 8am to 5pm	<b>Mar 26</b>	MDP Academy
26748	Wed 8am to 5pm	<b>Apr 30</b>	MDP Academy
26749	Wed 8am to 5pm	<b>May 28</b>	MDP Academy

### Evening classes

26751	Tue Wed 6 to 10pm	<b>Jan 28 to Jan 29</b>	MDP Academy
26752	Tue Wed 6 to 10pm	<b>Feb 25 to Feb 26</b>	MDP Academy
26753	Tue Wed 6 to 10pm	<b>Mar 25 to Mar 26</b>	MDP Academy
26754	Tue Wed 6 to 10pm	<b>Apr 29 to Apr 30</b>	MDP Academy
26755	Tue Wed 6 to 10pm	<b>May 27 to May 28</b>	MDP Academy





**Women's Only Self Defense Course. / \$ 40**  
 / 8 hrs / 0.8 CEUs

Women of all ages can sharpen their situational awareness, attack recognition, attacker discouragement, and avoidance of dangerous encounters. Builds an understanding of the dynamics of an attack and how to respond -- and how and when to deploy OC spray and resist, avoid, and defend themselves.

**Covered topics include**

- a** Understanding situational awareness and pre-encounter cues
- b** Using verbal commands and other tools
- c** Simple self-defense techniques and escapes
- d** Deployment of Sabre pepper spray, and
- e** Firearms safety and familiarization

**Third weekend of every month**

Course **SDE 416.**

26767	Sat 8am to 5pm	<b>Feb 15</b>	Mission Del Paso
-------	----------------	---------------	------------------

**LTC : License to Carry a Handgun. / \$ 80 /**  
 8 hrs / 0.8 CEUs

Meets or exceeds all instructions and training requirements necessary for students to apply for a License to Carry in Texas. **Prerequisites :**

- 1 **Must be a legal Texas resident** for the six months before you apply
- 2 **Must be at least 21** years of age, or 18 if active military
- 3 **Must be qualified to purchase a handgun** under federal and state law
- 4 **Must not be a fugitive** from justice
- 5 **Must not have been convicted of a felony**, or under deferred adjudication, in the ten years before the date of application
- 6 **Must not be currently charged** with the commission of a Class A or B misdemeanor or equivalent offense
- 7 **Must not have been convicted** in the last five years of a Class A or Class B misdemeanor or equivalent offense
- 8 **Must not be chemically dependent**
- 9 **Must be able to exercise sound judgment** with respect to firearms safety and proper storage
- 10 **Must not be determined to be delinquent in making child support** payments administered or collected by the attorney general
- 11 **Must not be determined to be delinquent in the payment of state or federal taxes**
- 12 **Must not be currently restricted under a protective order**, or subject to a restraining order, affecting the spousal relationship, other than a restricting order affecting property interests
- 13 **Must not make any material misrepresentation**, or fail to disclose any material fact, in application for a state-issued License to Carry Handgun
- 14 **Must have current Texas driver's license** or state identification card
- 15 **Must have Social Security card**
- 16 **Must have a handgun**, whether semi-automatic or revolver, and
- 17 **Must provide a minimum 50 rounds** of standard-only sporting arms ammunition; SAAMI may be used.

**Please note :**

- 1 **This is not a handgun training and development course.** You need to be sufficiently proficient with your handgun to pass the required qualification course of fire.
- 2 **If you need handgun training**, refer to the monthly course SDE 902, Introduction to Firearms Safety.
- 3 **There are 9mm firearms available** for use at the academy, for a small fee for cleaning and maintenance.
- 4 **You must provide a government-issued ID** ( a driver's license, for instance ) to check out a firearm for use on the Academy range.

Course **SDE 200.**

26771	Tue Wed 6 to 10pm	<b>Jan 14 to Jan 15</b>	MDP Academy
26772	Tue Wed 6 to 10pm	<b>Feb 11 to Feb 12</b>	MDP Academy
26774	Tue Wed 6 to 10pm	<b>Mar 18 to Mar 19</b>	MDP Academy
26775	Tue Wed 6 to 10pm	<b>Apr 15 to Apr 16</b>	MDP Academy
26776	Tue Wed 6 to 10pm	<b>May 13 to May 14</b>	MDP Academy
26777	Sat 8am to 5pm	<b>Jan 18</b>	MDP Academy
26778	Sat 8am to 5pm	<b>Feb 15</b>	MDP Academy
26779	Sat 8am to 5pm	<b>Mar 22</b>	MDP Academy
26780	Sat 8am to 5pm	<b>Apr 26</b>	MDP Academy
26802	Sat 8am to 5pm	<b>May 24</b>	MDP Academy

# Motorcycle Rider Courses

**Director Barry Bogle.** For more information, call 915 **831-7005**.

**You cannot register for these classes online.**

## Motorcycle Rider Course. / \$ 300 / 15 hrs

Learn the basic motorcycle skills to safely enjoy this sport. The Texas Department of Licensing and Registration, or TDLR, approved this 15-hour course, which includes classroom instruction and training on the motorcycle. Motorcycles are furnished free of charge. When you finish the course and show your certificate to TDLR, you'll get a class M license, which may entitle you to insurance company discounts. Students aged 15 to 17 must have 32 hours of proven driver education to take this course, and written permission from their parents and instructor. Call 915 831-7005 for dates and times.

### Prerequisites :

- 1 You must have **the ability to ride a bicycle**.
- 2 You must **complete a 3-hour eCourse and print the certificate** of completion before the first class day. An incomplete or failed eCourse is a failure for the entire course. Pick up your packet at LETA.
- 3 The rider must wear a **long sleeve shirt or jacket, long pants** with no holes, **over-ankle boots** ( no athletic shoes ), **eye protection** and **full-fingered gloves**. Bring a **sack lunch** and **2 bottles of water**.
- 4 Per TDPS rules, **if you arrive late you can't be admitted** to class.
- 5 If you are late to class or fail your eCourse, **you get no refund**.
- 6 During the Covid-19 pandemic, you must provide your own Txdot-approved helmet so that all safety protocols are met.

### Course **PLE 733**.

26723	Sat Sun 7am to 5pm	<b>Jan 11 to Jan 12</b>	Mission Del Paso Riding Range
26781	Sat Sun 7am to 5pm	<b>Jan 18 to Jan 19</b>	MDP Riding Range
26782	Sat Sun 7am to 5pm	<b>Jan 25 to Jan 26</b>	MDP Riding Range
26783	Sat Sun 7am to 5pm	<b>Feb 1 to Feb 2</b>	MDP Riding Range
26784	Sat Sun 7am to 5pm	<b>Feb 8 to Feb 9</b>	MDP Riding Range
26785	Sat Sun 7am to 5pm	<b>Feb 15 to Feb 16</b>	MDP Riding Range
26786	Sat Sun 7am to 5pm	<b>Mar 1 to Mar 2</b>	MDP Riding Range
26787	Sat Sun 7am to 5pm	<b>Mar 22 to Mar 23</b>	MDP Riding Range
26788	Sat Sun 7am to 5pm	<b>Mar 29 to Mar 30</b>	MDP Riding Range
26789	Sat Sun 7am to 5pm	<b>Apr 5 to Apr 6</b>	MDP Riding Range
26790	Sat Sun 7am to 5pm	<b>Apr 12 to Apr 13</b>	MDP Riding Range
26791	Sat Sun 7am to 5pm	<b>Apr 26 to Apr 27</b>	MDP Riding Range
26792	Sat Sun 7am to 5pm	<b>May 3 to May 4</b>	MDP Riding Range
26793	Sat Sun 7am to 5pm	<b>May 10 to May 11</b>	MDP Riding Range
26795	Sat Sun 7am to 5pm	<b>May 24 to May 25</b>	MDP Riding Range

### Classes in Spanish

26796	Sat Sun 7am to 5pm	<b>Feb 22 to Feb 23</b>	MDP Riding Range
-------	--------------------	-------------------------	------------------



## Experienced Motorcycle Rider Course. / \$ 125 / 6 hrs

This course provides experienced motorcyclists with additional skills and knowledge which are often lacking in motorcycle accidents, and consists of six hours of hands-on training on the riding range. **Class limited to 8 students.**

### Prerequisites :

- 1 You must use your own motorcycle or a motorcycle borrowed with written permission from the actual owner.
- 2 You must wear a Txdot-approved helmet with eye protection, a long sleeve shirt or jacket, long pants, over-the-ankle boots, **NO** athletic shoes, and full-fingered leather gloves.
- 3 You must show a valid driver's license, proof of insurance, and vehicle registration, and
- 4 You must have had six months of active riding.

**Note :** You must call the Training Academy at 915 831-7005 for appointment and additional information.

### Course **PLE 743**.

26797	Sat 7am to 3pm	<b>Jan 11</b>	Mission Del Paso Riding Range
26798	Sat 7am to 3pm	<b>Feb 1</b>	MDP Riding Range
26799	Sat 7am to 3pm	<b>Mar 1</b>	MDP Riding Range
26800	Sat 7am to 3pm	<b>Apr 5</b>	MDP Riding Range

## Three-Wheel Motorcycle Rider Course. / \$ 235 / 16 hrs

Learn the basic motorcycle skills necessary to safely enjoy the 3-wheel motorcycle. TDLR, the Texas Department of Licensing and Registration, approved this 16-hour course, which includes classroom instruction and driving training. Three Wheel Motorcycles are furnished without additional charge. Successful completion qualifies the student to obtain a 3-Wheel bike endorsement from TDLR and may also entitle you to insurance discounts. Students age 15 to 17 must show proof of 32 hours previous Driver Education training, before admission. Parental and instructor written permission is required to take the course. In Partnership with CAN-AM. Additional classes will be offered as needed. Offered the last Saturday and Sunday of the month. Call 915 **831-7005** for dates and times. Must register on Can-Am website.

### Prerequisites :

- 1 You must wear a Txdot-approved helmet, a long-sleeve shirt or jacket, long pants with no holes, over-the-ankle boots, **NO** athletic shoes, eye protection, and full-fingered leather gloves. Bring a sack lunch and 2 bottles of water.
- 2 Per TDPS rules, if you arrive late you can't be admitted to class.
- 3 If you are late to class or fail your eCourse, you get no refund.

### Course **PLE 720**.

Sat Sun 7am to 5pm	Mission Del Paso Riding Range
Sat Sun 7am to 5pm	MDP Riding Range
Sat Sun 7am to 5pm	MDP Riding Range
Sat Sun 7am to 5pm	MDP Riding Range
Sat Sun 7am to 5pm	MDP Riding Range
Sat Sun 7am to 5pm	MDP Riding Range
Sat Sun 7am to 5pm	MDP Riding Range

# Personal Enrichment

Leticia Guerra, Director.

Email [kbrown39](mailto:kbrown39) or [rcabra12@epcc.edu](mailto:rcabra12@epcc.edu) or call 915 **831-6684** or **6687**. Go to [epcc.edu/academics/continuingeducation](http://epcc.edu/academics/continuingeducation) to learn more about new course offerings.

You must be **17 years of age** to register in any of the Personal Enrichment Classes.

## Home and Garden

### Beginning Sewing. / \$ 130 / 18 hrs

Introduces the basic techniques of clothing construction and fitting. Learning this skill is for people who want to beat the high cost of quality clothing. Students make at least one garment in class, learn basic and commercial pattern fitting and adjustment. No previous knowledge of sewing is necessary. **Student purchase supplies.**

Course **PIA 545.**

26807 Wed 6 to 9pm **Jan 15 to Feb 19** Valle Verde B152

### Intermediate Sewing. / \$ 130 / 18 hrs

Designed to further the sewing skills for those who know how to use the sewing machine and have had some sewing experience. There is some emphasis on time-saving techniques. First class meets for one hour. Bring sewing pattern, fabric, and tools to first class. **Prerequisite: PIA 545, Beginning Sewing.**

Course **PIA 558.**

26808 Wed 6 to 9:26pm **Mar 19 to Apr 23** Valle Verde B152

### Basic American Quilting. / \$ 130 / 18 hrs

This course will teach students to create a simple item. Previous quilting experience is unnecessary, but you should know how to operate a sewing machine and to hand sew. First class meets for one hour. **Students purchase supplies.**

Course **PIA 786.**

26801 Sat 10am to 1pm **Jan 18 to Feb 22** Valle Verde B152

### Crochet. / \$ 85 / 12 hrs

This course is designed to introduce the student with the skills and techniques involved in the art of crochet. **Students purchase supplies.**

Course **PIA 902.**

26468 Thu 6 to 8pm **Jan 23 to Feb 27** Valle Verde B-152

### Intermediate Crochet. / \$ 125 / 16 hrs

This course is designed to further develop the crochet skills and techniques learned in beginning crochet and give students the confidence to create more complex crochet items. **Students purchase supplies.**

Course **PIA 933.**

26469 Thu 6 to 8pm **Mar 20 to May 8** Valle Verde B152

### Home Gardening in El Paso. / \$ 100 / 16 hrs

Student will acquire information and learn techniques that will enable them to become successful gardeners under the challenging conditions posed by the El Paso climate. The course is taught by master gardeners. **No class** on Apr 19.

Course **PIA 477.**

26470 Sat 1030am to 1230pm **Mar 22 to May 17** Valle Verde B150

### Dog Behavior Class. / \$ 103 / 16 hrs

Build a better working relationship with your dog through the use of verbal commands and signals. All dogs should be 6 months and 4 years of age. Requirement: Do not bring dog to the first class, and **do not purchase any equipment before the class starts.** Instructor will explain what equipment is needed at first class. Dog owner must be 17 years of age or older. Certified American Kennel Club Instructor. All dogs must be vaccinated. Provide a contact phone number or email at time of registration. **No class** on Apr 19.

Course **PIA 514.**

26471 Sat 830 to 1030am **Mar 22 to May 17** Valle Verde Patio



### Interior Design 101. / \$ 100 / 12 hrs

Learn how to redesign your living room, bedroom, or study to better reflect your personal taste, and how to measure accurately to create a simple floor plan. Select colors, material, furniture, accessories for a room in your house.

Course **PIA 628.**

26472 Mon 6 to 8pm **Jan 27 to Mar 3** Valle Verde B152

### Interior Design 102. / \$ 100 / 12 hrs

Design your living room, bedroom, bathroom or study to better reflect your personality, taste, and needs, with selected furniture and accessories. You provide design concepts. **Prerequisite : PIA 628, (Interior Design 101).**

Course **PIA 804.**

26473 Mon 6 to 8pm **Apr 7 to May 12** Valle Verde B152

### New / Embracing Self-Love and Acceptance a Journey to Personal Empowerment. / \$ 100 / 12 hrs

Explore the foundational concepts of self-love and acceptance with the expertise of a seasoned coach in self-love and relationships. Equip yourself with tools and strategies to cultivate a deep sense of self-acceptance, overcome limiting beliefs, and foster a stronger connection with yourself.

Course **PIA 934.**

26474 Thu 6 to 8pm **Jan 23 to Feb 27** Valle Verde A2324

### New / Empowering Connections Relationship Enrichment Course for Couples. / \$ 100 / 12 hrs

Strengthen your relationship with our comprehensive course for couples. Gain practical tools to improve communication, resolve conflicts, and deepen intimacy at any stage of your relationship. Learn from an experienced coach in interactive exercises that foster collaboration and understanding.

Course **PIA 935.**

26475 Thu 6 to 8pm **Mar 20 to Apr 24** Valle Verde A2324

### New / Mastering Fashion E-Commerce : Affiliate Programs and Dropshipping Secrets. / \$ 100 / 12 hrs

Discover the secrets to fashion e-commerce in a course on affiliate programs and dropshipping. See advantages and challenges to both models and learn to leverage them for online store success. This course is your key to navigating the intricacies of the ever-evolving world of e-commerce.

Course **PIA 936.**

26476 Wed 6 to 8pm **Apr 2 to May 7** Valle Verde A2324



## Creative Arts

### Drawing and Sketching for Beginners. / \$ 125 / 15 hrs

Discover the joy of drawing. Teaches you drawing basics through studies and still life, quick sketches, and exercise. **Students purchase supplies.** **No class** on Jan 20.

Course **PIA 499.**

26477 Mon 530 to 830pm **Jan 13 to Feb 17** Valle Verde A1326



### Watercolor Painting Techniques Part I. / \$ 125 / 15 hrs

Introduces watercolor techniques, basic art problem solving, and drawing to new as well as experienced artists. **Prerequisite** : PIA 499, Drawing and Sketching for Beginners. **Students purchase supplies.** **No class** on Mar 15.

Course **PIA 498.**

26478 Sat 9am to noon **Mar 1 to Apr 5** Valle Verde A1326

### Watercolor Painting Techniques Part II. / \$ 125 / 15 hrs

Introduces a watercolor techniques, basic art problem solving, and drawing to new as well as experienced artists. **Prerequisite** : PIA 499, Drawing and Sketching for Beginners. **Students purchase supplies.** **No class** on Apr 19.

Course **PIA 791.**

26479 Sat 9am to noon **Apr 12 to May 24** Valle Verde A1326

### Portrait Painting in Oil. / \$ 145 / 15 hrs

Learn the basics of drawing the human face, mixing the colors needed to create a portrait, and how to choose a photo that helps you create mood and portray personality in the portrait. **Pay for your own supplies.**

Course **PIA 506.**

26480 Thu 6 to 9pm **Jan 23 to Feb 20** Valle Verde A1318

### Oil Painting Principles and Techniques. / \$ 145 / 15 hrs

This class is designed to help students have a better understanding of how oil color works in order to create a greater visual impact. **Students purchase supplies.**

Course **PIA 493.**

26481 Thu 6 to 9pm **Mar 20 to Apr 17** Valle Verde A1318

### Painting with Acrylics I. / \$ 120 / 12 hrs

Follow the instruction into the world of color. Learn the techniques of mixing different hues, applying paint onto the canvas, and achieving aerial perspective. **Students purchase supplies.**

Course **PIA 724.**

26482 Mon 6 to 8pm **Jan 27 to Mar 3** Valle Verde A1318

### Painting with Acrylics II. / \$ 120 / 12 hrs

A continuation of PIA 724, Painting with Acrylics I, that further develops your personal style, improves your color, composition and design skills, and fosters more advanced painting principles and techniques. **Prerequisite** : PIA 724, Painting with Acrylics I. **Students purchase supplies.**

Course **PIA 928.**

26483 Wed 6 to 8pm **Mar 26 to Apr 30** Valle Verde A1318

### New / Fundamentals of Digital Photography. / \$ 130 / 16 hrs / 1.6 ceus

Welcome to the basics of digital photography! In this class, you will learn how cameras work, natural and artificial lighting, and composition of photographs, and the ability to unleash your creativity. Anyone from beginners to experienced professionals can participate and learn a variety of photography techniques through practice, and finding your own style. Share the joy of capturing beautiful moments! **Materials needed** : **Digital camera or mirrorless camera.**

Course **PIA 484.** Equivalent to WECM course PHTC 1004.

26989 Tue Thu 6 to 8pm **Feb 4 to Feb 27** Valle Verde B163

### New / Intermediate Professional Photography. / \$ 130 / 16 hrs

Do you want to gain confidence in your photography ? This class takes your photography to the next level. You can develop your style and professional skills by choosing a photography course that will master the basics of photography required to use a camera. The course will present classes on topics across the spectrum of photography that provide hands-on instruction in the elements, composition, and framing most useful at the advanced photography level. **Materials needed** : **Digital camera or mirrorless camera.** **No class** on Mar 11 to 13.

Course **PIA 511.**

26990 Tue Thu 6 to 8pm **Mar 4 to Apr 3** Valle Verde B163

### New / Mastering Photoshop and Lightroom for Photography. / \$ 135 / 20 hrs

This course is for those who want to learn the fundamentals of photo editing and retouching. By learning the basic functions and usage methods of Photoshop and Lightroom, you will learn the techniques to make your photos more attractive. Take your photos to the next level with Photoshop and Lightroom's powerful post-processing technology. The entire course is completed in a computer lab upgraded with the latest equipment. **Materials needed** : **4-gigabyte USB flash drive or higher.**

Course **PIA 487.**

26953 Tue Thu 6 to 8pm **Apr 8 to May 8** Valle Verde B163

### How to Build or Upgrade your PC and Save Money. / \$ 70 / 8 hrs

Have you ever thought of building or upgrading your own personal computer? Yes, then this course is made for you. In this course you will learn how to build a new computer or upgrade your existing computer step by step.

Course **PIA 505.**

26487 Wed 6 to 8pm **Feb 5 to Feb 26** Valle Verde AST120

### Exploring the World of 3D Printing. / \$ 120 / 12 hrs

You'll be guided through the 3D printing process, exploring its potential as well as the limitations of this transformative technology. For hobbyist enthusiasts and those wanting to personalize objects, this offers a practical intro to 3D printing, requiring only basic computer skills and minimal prerequisites.

Course **PIA 517.**

26488 Tue Thu 6 to 8pm **Apr 15 to May 1** Admin Svc Ctr B485

## Dance and Music

### Latin Dance Made Easier. / \$ 70 / 10 hrs

Learn to dance any Latin dance easier and faster by practicing the five most important principles all good dancers share. You'll learn Timing, Connection, Redirection, Leading and Following, and Turn Preparation with easy-to-learn dance patterns from Salsa, Bachata, Cha-Cha-Cha, and Merengue. **No partner or dance experience required. Please wear tennis shoes.**

Course **PID 428.**

26489 Sat 11am to 1pm **Jan 18 to Feb 15** Rio Grande J703

### Social Dancing for Everyone. / \$ 70 / 10 hrs

Have fun, music, and dancing in this class! Social dancing is a non-competitive kind of ballroom and Latin dancing. This class is for everyone that wants to dance. Learn practical steps and combinations use in practical settings like weddings, nightclubs, business functions, and informal dance events. **No partner required. Please wear tennis shoes.**

Course **PID 429.**

26490 Sat 130 to 330pm **Jan 18 to Feb 15** Rio Grande J703

### Salsa / Bachata I. / \$ 70 / 10 hrs

Quick and high energy Latin dance, like Salsa, can burn a substantial number of calories and increase blood circulation which is very beneficial to all of us. Bachata is a social dance that will help you with your posture, muscle toning, and coordination. A combination of both will provide you with the best overall health benefits. In this introductory class you will learn to dance Salsa and Bachata with the most popular Latin music in the comfort of your own home. **No partner required. Please wear tennis shoes.**

Course **PID 403.**

26491 Thu 630 to 830pm **Feb 6 to Mar 6** Valle Verde A1215

### Salsa / Bachata II. / \$ 70 / 10 hrs

Continuation of our very popular Salsa / Bachata class. This dance class is designed for anyone who wants to increase their Salsa, Bachata, Cha-Cha-Cha, and Merengue dance skills from beginner to intermediate. In this class you will learn intermediate Salsa, Bachata, Cha-Cha-Cha and Merengue dance patterns, movement redirection, dance synchronization, leading and following techniques, and dance etiquette with the most popular Latin music in a fun-filled environment. **No partner required. Please wear tennis shoes.**

Course **PID 427.**

26492 Sat 1 to 3pm **Apr 26 to May 24** Valle Verde A1215

### Two Step and More. / \$ 70 / 10 hrs

Two step dance is a relatively simple dance form to learn. You will be introduced to the Two Step, East Coast Swing, El Paso, Four Corners, Boot Scootin Boogie, Charleston Bump, and related dance steps. Get your dancing shoes on! **No partner required. Please wear tennis shoes.**

Course **PID 410.**

26493 Thu 630 to 830pm **Apr 24 to May 22** Valle Verde A1215

### Party Line Dancing. / \$ 70 / 10 hrs

The simplicity of line dancing steps makes them so adaptable that they can be reworked and reused in a variety of different dances and styles. The steps are very basic and are often repeated numerous times in the line dance. Alpine, Cowboy, Arizona Shuffle, Bare Foot, Candida, and Country Cha-Cha are just a few dance steps that will be introduced. **Please wear tennis shoes.**

Course **PID 426.**

26494 Tue 630 to 830pm **Mar 18 to Apr 15** Transmountain 1405

### Jazz Dance. / \$ 70 / 10 hrs

Learn some basics of the Bob Fosse swing jazz style, along with original choreography from the instructor. **Please wear tennis shoes.**

Course **PID 404.**

26496 Wed 630 to 830pm **Jan 22 to Feb 19** Valle Verde A1215

### Pop Dance. / \$ 70 / 10 hrs

Come together and dance along some of the latest hit songs that get you moving and grooving! **Please wear tennis shoes.**

Course **PID 407.**

26497 Tue 630 to 830pm **Jan 21 to Feb 18** Transmountain 1405

### Contemporary Dance. / \$ 70 / 10 hrs

We'll move thru Bartenieff patterns to explore our kinespheres, and learn how to express ourselves with tools and techniques from artists such as Jose Limon, Isadora Duncan, Shen Wei, and Paul Taylor! **Please wear tennis shoes.**

Course **PID 412.**

26498 Wed 630 to 830pm **Mar 19 to Apr 16** Transmountain 1405



### Argentine Tango for Beginners. / \$ 70 / 10 hrs

Escape into the world of Argentine Tango in this 5-week course designed especially for beginners. You will learn the fundamentals of tango including basic steps to help navigate the dance floor. Students will learn exercises to help improve their dance technique, the basic tango steps, giros (turns), and how to connect with others on the dance floor.

Course **PID 431.**

26499 Wed 6 to 8pm **Feb 5 to Mar 5** Rio Grande J703

### Argentine Tango for Beginners II. / \$ 70 / 10 hrs

Escape into the world of Argentine Tango in this 5-week course designed to help you continue your tango adventure. You will learn to reinforce your tango dancing skills and learn more classic combinations including musicality, tango orchestras, and tango codes as well as a little milonga and vals. At the same time, you will learn exercises to help improve your dance technique and how to connect with others on the dance floor.

Course **PID 432.**

26500 Wed 6 to 8pm **Apr 9 to May 7** Rio Grande J703

### Voice Class. / \$ 105 / 16 hrs

Beginning voice study provides experience in using your singing voice. It emphasizes establishing good vocal tone production, breathing exercises, and fundamentals of music theory. Students perform a repertoire of varied styles.

Course **PIM 563.**

26501 Tue 6 to 8pm **Mar 25 to May 13** Valle Verde A1201

### Guitar I. / \$ 75 / 13.5 hrs

Have you ever dreamed of sitting by the fire and picking up an old guitar? Take this opportunity to learn the basic chord forms, simple melody lines, and musical notation. Soon you will play songs in folk and rock style. **Guitar required. No class on Mar 15.**

Course **PIM 401.**

26502 Sat 9 to 1030am **Feb 1 to Apr 5** Valle Verde A1126



## Guitar II. / \$ 75 / 13.5 hrs

A continuation of Guitar I emphasizing technique, theory, chords, scales and repertory. Offers initial experience in playing the guitar, and establishing good music reading ability and rhythmic orientation. Introduces fundamentals of music theory and key technique. **Guitar required. No class** on Mar 15.

Course **PIM 417.**

26503 Sat 1035am to 1205pm **Feb 1 to Apr 5** Valle Verde A1126

## Piano for Adults I. / \$ 120 / 18 hrs

Beginning piano provides an initial experience in playing the piano. Emphasis is placed on establishing good music-reading ability and rhythmic orientation. Introduces the fundamentals of music, theory, and keyboards.

Course **PIM 400.**

26504 Sat 11am to 2pm **Jan 25 to Mar 1** Valle Verde

## Piano for Adults II. / \$ 120 / 18 hrs

Each student will receive some individual attention and group instruction. Emphasis is placed on forming and maintaining good habits, reinforcement, basic musical theory and rhythmic orientation. **Prerequisite** : PIM 400, Piano for Adults I. **No class** on Apr 19.

Course **PIM 405.**

26505 Sat 11am to 2pm **Mar 29 to May 10** Valle Verde A1333

## Chorus I. / \$ 110

Course **PIM 421.**

Conc 26514 Tue Thu 1130a to 1250p **Jan 21 to May 16** Valle Verde AST161

## Guitar Ensemble I. / \$ 110

Course **PIM 423.**

Conc 26515 Tue Thu 10 to 1120am **Jan 21 to May 16** Valle Verde AST161

## Orchestra I. / \$ 110

Course **PIM 418.**

Conc 26516 Mon Wed 1 to 220pm **Jan 21 to May 16** Valle Verde AST161

## Concert Band I. / \$ 110

Course **PIM 422.**

26517 Tue Thu 10 to 1120am **Jan 21 to May 16** Valle Verde A1201

**You must be 17 years old** to take culinary arts courses at EPCC.

## Culinary Arts

### Mediterranean Cuisine. / \$ 158 / 21 hrs

Discover how to prepare Mediterranean dishes that will stimulate your palate. You will explore different ingredients that are used in Mediterranean cuisine. During a seven-week period, you will be able to identify the different flavors and the ingredients that you can use to create a dish. **No class** on Mar 10. **Student purchase supplies.**

Course **PIE 970.**

26506 Mon 6 to 9pm **Jan 27 to Mar 17** Valle Verde B153

### New / Indian Cuisine. / \$ 158 / 21 hrs

Learn different styles of Indian dishes from all over India. In this class students will feel like they are going on a tasting tour of India as they experience flavors from different regions of the country. **Students purchase supplies.**

Course **PIE 0008.**

26809 Mon 6 to 9pm **Apr 7 to May 19** Valle Verde B153

### New / Southern Comfort Food. / \$ 158 / 21 hrs

Tour the American South, learning classic dishes from different southern states. You will learn about classic Southern dishes from Alabama, Louisiana, Georgia, Mississippi, and South Dakota. **Students purchase supplies.**

Course **PIE 009.** Equivalent to WECM course PSTR 2000.

26810 Tue 6 to 9pm **Jan 21 to Mar 4** Valle Verde B153

### Baking from Scratch. / \$ 125 / 21 hrs / 2.1 CEUs

There's nothing like warm, fresh-baked goodies. Learn how to make healthy and delicious cakes, cookies, and breads. **Students purchase supplies.**

Course **PIE 965.** Equivalent to WECM course PSTR 2000.

26508 Thu 6 to 9pm **Apr 3 to May 15** Valle Verde B153

### USA Regional Cuisine. / \$ 158 / 21 hrs

Take a tour of America learning classic dishes from different regions. Learn about foods from the New England area, down to Florida, back up into the Midwest, then journeying to the South and Southwest. You will also get to travel to Hawaii and California. **Students purchase supplies.**

Course **PIE 970.**

27716 Tue 6 to 9pm **Apr 1 to May 13** Valle Verde B153

### Beginner's Cake Decorating. / \$ 125 / 21 hrs / 2.1 ceus

You'll soon be proud of the cakes you decorate! Learn tip designs and how to make royal icing flowers. **Students purchase supplies.**

Course **PIE 967.** Equivalent to WECM course FCTR 1015.

26510 Sat 9am to 12 noon **Jan 25 to Mar 8** Valle Verde B153

### Advanced Cake Decorating. / \$ 125 / 21 hrs

In this course you'll improve the techniques from Level 1. You'll be introduced to fondant cakes and tier cakes, and you'll be learning new ways of how to work with chocolate on your cakes as well. **Students purchase supplies.** **Prerequisite:** PIE 967 (Beginner's Cake Decorating). **No class** on Apr 19.

Course **PIE 937.**

26511 Sat 9am to 12 noon **Mar 22 to May 10** Valle Verde B153

### New Age Coffee. / \$ 78 / 10 hrs

From classic morning drip to iced lattes, learn the many faces of coffee. Hot or iced, milk substitutes, homemade sweeteners, creamers, caffeine alternatives - any way you want it at no extra cost. **Students buy their supplies.**

Course **PIE 005.**

26518 Thu 6 to 8pm **Jan 23 to Feb 20** Valle Verde B153

### Mixology -- Basic Bartending. / \$ 80 / 12 hrs

Intro to the basics of bartending. You'll gain knowledge of the operations of a bar, the principal distilled beverages, and the major cordials. Emphasis on the proper methodology of mixing and serving cocktails and beverages. Flavored and colored water will substitute for alcohol. **Must be 21 years of age.**

Course **PIE 971.** Equivalent to WECM course RSTO 1010.

26512 Wed 6 to 8pm **Apr 9 to May 14** Valle Verde B153

### Wine Appreciation. / \$ 100 / 12 hrs

Experience wine culture in its natural habitat -- restaurants. Expand your wine knowledge in this exciting informative course. Learn to pair food with wine, try new wines, and explore the culture of wine while dining at some of the finer restaurants in El Paso. First class meets at Wine Attitude. You must cover your own food costs. Class may meet at different locations. Intent of class is to meet at different restaurants. **Must be 21 years of age.**

Course **PIE 402.**

26513 Wed 6 to 8pm **Jan 29 to Mar 5** Wine Attitude, Sunland Park Mall, 2nd floor ste G06

## EPCC in Partnership with ed2go

are offering these 6-week, online courses that will teach you professional skills, help you continue your education credit, or allow you to learn new hobbies.

The following are some examples of what is offered:

### Young Adult Courses (Ages 17+)

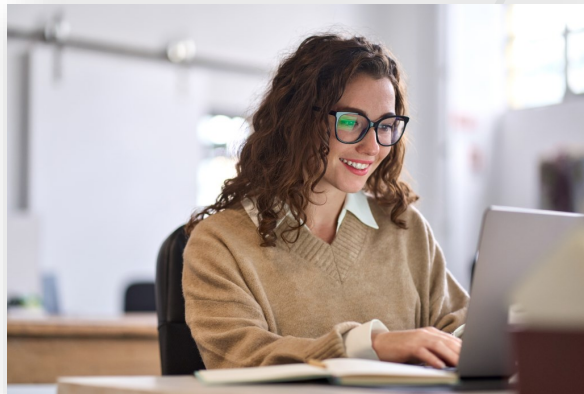
- Blogging & Podcasting for Beginners
- SAT/ACT Preparation
- SAT/ACT Preparation
- Creating Web Pages
- Mastering Public Speaking
- Mastering Your Digital SLR or Mirrorless Camera

### Personal Development

- Learn to Buy and Sell on eBay
- Speed Spanish
- Leadership
- Conversational Japanese
- Introduction to QuickBooks
- Personal Finance
- Beginning Writer's Workshop

### Exam Preparation

- GED Preparation
- GMAT Preparation
- GRE Preparation—Part I
- GRE Preparation—Part II
- Everyday Math
- Grammar Refresher
- Writing Essentials



*Fundamental Courses 24 Hrs.*

*\*For many more courses and other pertinent information and details, please visit the Ed2go Catalog at [www.ed2go.com/epcc/](http://www.ed2go.com/epcc/)*



# Children's College

**Melissa Sanchez**, Manager. Email [lpatter6@epcc.edu](mailto:lpatter6@epcc.edu) or [msanc201@epcc.edu](mailto:msanc201@epcc.edu) or call 915 **831-6692** or 915 **891-6678**.

Children's College is an opportunity for children to take classes in a college environment, and increases their awareness and understanding of a college education. **Note** : Children's courses have an age requirement. Go to [epcc.edu/academics/continuingeducation](http://epcc.edu/academics/continuingeducation) to learn of our newest course offerings.

## Academic Enrichment

### Junior Dog Obedience. Ages 8 to 12. / \$ 70 / 8 hrs

A certified American Kennel Club instructor shows kids how to build better relationships with their dogs by use and acceptance of verbal commands and signals. **Don't** bring your dog to the first class. **No class** on Apr 19.

Course **PLD 785**.

26387 Sat 1030 to 1130am **Mar 22 to May 17** Valle Verde Patio

### Spanish for Kids. Grades 3rd - 5th. / \$ 95 / 12 hrs

Learn to communicate with your Spanish speaking neighbors! Kids learn basic Spanish phrases and words used in daily conversation. An excellent foundation for future language study. **No class** on Apr 19.

Course **PLD 823**.

26388 Sat 1 to 3pm **Apr 5 to May 17** Valle Verde B100



### CSI : Crime Scene Investigation for Children. Ages 8 to 12. / \$ 115 / 16 hrs

Children solve mysteries from clues left at imaginary crime scenes, in the role of investigator interpreting evidence as a team. You'll use the skills of a real CSI: photography, diagrams, fingerprints, shoe impressions, DNA. Includes final mock investigation and tour of EPPD Headquarters. **No class** on Mar 15.

Course **PLD 849**.

26389 Sat 1130am to 130pm **Feb 15 to Apr 12** Valle Verde B180

### Math and Cooking. Grades 3rd - 5th

/ \$ 95 / 12 hrs

The kitchen has wonderful opportunities to help children learn math concepts like fractions, estimation and measuring quantities. Discover healthy foods and reinforce your math skills. **No class** on Mar 15. **Student will purchase supplies.**

Course **PLD 618**.

26949 Sat 1230 to 2pm **Jan 25 to Mar 22** Valle Verde B153

## Black Rocket

These courses will offer the latest in cutting-edge technology and (STEM) courses that will enhance the learner's technology experience.

### Python Programmers. Ages 8 to 11. / \$ 150 / 12.5 hrs

Want to learn the world's fastest-growing programming language used by Google, Nasa, YouTube, and the CIA? Learn to code in Python to create engaging apps and games. Fun lessons take you step-by-step into programming that lets you challenge friends with content you built from start to finish! Returning students create more advanced projects that build on prior years. Compatible with **Mac, Windows, and Chrome**.

Course **PLD 619**.

26419 Sat 11am to 130pm **Feb 1 to Mar 1** Valle Verde B163 ..

### YouTube Content Creators. Ages 11 to 14.

/ \$ 150 / 12 hrs

Find your voice and leave your mark! Whether six or sixty, it's time to become the next YouTube star. Explore the variety of content and personalities on YouTube and how to find your own niche. Learn to practice good digital citizenship, and the platform's dos and don'ts. Develop professional editing skills, your on-camera presence, and branding your own channel. Plan to launch your channel with the content created in class! You need a webcam that's compatible with **Mac and Windows only**.

Course **PLD 659**.

26390 Sat 9 to 11am **Feb 1 to Mar 8** Valle Verde B164

### Minecraft Modders. Ages 11 to 14. / \$ 150 / 12.5 hrs

Customize your Minecraft world and mod this one of a kind classic game. Learn scripting and logic statements as you mod. You'll create a wide variety of new elements, gameplay mechanics, and world-generating mods, changing the way you play Minecraft. You must own a Java version of Minecraft to take this class; tablet, phone, and game console version of Minecraft are not compatible. Returning students create more advanced projects that build on prior years. Compatible with **Mac and Windows only**. **No class** on Apr 19.

Course **PLD 611**.

26391 Sat 830 to 11am **Mar 29 to May 3** Valle Verde B123

### Roblox Makers. Ages 8 to 11. / \$ 150 / 12.5 hrs

Unlock the power of Roblox Studio, the world-building tool used by real-world Roblox developers! Learn to build 3D models and create an adventure in your Roblox world. Design unique animations to bring your characters to life. **No class** on Apr 19. Compatible with **Mac and Windows only**.

Course **PLD 640**.

26951 Sat 11am to 130pm **Mar 29 to May 3** Valle Verde B123

## Snapology

These courses offer the use of technology, and take an active role in inspiring the next generation of scientists, engineers, and mathematicians through excitement in these concepts at an early age.

### Kinder Bots. Grades K - 2nd.

/ \$ 110 / 6 hrs

Children begin to explore the world of robotics as they build simple models that teach the fundamentals of robotic design. Whether learning about sensors, building drills and magic wands, building helicopters and robotic dogs, or discovering ways that gears and pulleys create movement, every child is sure to have a great time. **No class** on Mar 15.

Course **PLD 662**.

26392 Sat 10 to 11am **Feb 15 to Mar 29** Valle Verde B184

## Junior Engineers ages 5 to 6.

/ \$ 110 / 6 hrs

Young students build fun and simple models using Duplo bricks. By playing with and manipulating the models, they experience pulleys, levers, gears, wheels and axles, exploring energy, forces, and balance.

**No class** on Mar 15.

Course **PLD 664.**

26393 Sat 9 to 10am **Feb 15 to Mar 29** Valle Verde B184

## Arts

### Young Artist Workshop. Ages 6 to 9.

/ \$ 95 / 12 hrs

Introduces basic drawing using a variety of materials. Learn about contrasting light and shadow, positive space, line and design. **Student will purchase supplies.**

Course **PLD 776.**

26394 Sat 930 to 11am **Jan 18 to Mar 8** Valle Verde A1318

### Watercolor Painting for Kids. ages 8 to 10.

/ \$ 115 / 12 hrs

Basic techniques in painting with watercolor. Includes demonstration of creating landscape, seascape, and still life. **Student will purchase supplies.**

Course **PLD 587.**

26395 Sat 1130am to 1pm **Jan 18 to Mar 8** Valle Verde A1318

## Sports and Fitness

### Golf for Children. Ages 8 to 13. / \$ 70 / 6 hrs

Introduces the beginning golfer to golf swing fundamentals and various aspects of the game, including its rules and courtesies. Golf clubs not required. **Student will purchase range balls.**

Course **PLD 758.**

26396 Sat 1 to 230pm **Apr 5 to Apr 26** Ascarate Golf Course , 6900 Delta

### Martial Arts for Young People. Ages 7 to 14.

/ \$ 70 / 8 hrs

An ancient Chinese martial art, Shaolin Kung Fu, builds self-esteem, providing you with a chance to improve fitness and self-defense awareness.

Course **PLD 880.**

26399 Sat 9 to 10am **Jan 18 to Mar 8** Valle Verde G102

### Advanced Martial Arts for Young People. Ages 7 to 14.

/ \$ 95 / 12 hrs

This advanced class continues teaching you basic Shaolin Kung Fu. Designed to build positive self-esteem and provide students with an opportunity to develop the skills necessary to improve fitness and self-defense awareness. **Prerequisite :** PLD 880, Martial Arts for Young People.

Course **PLD 921.**

26400 Sat 10 to 1130am **Jan 18 to Mar 8** Valle Verde G102

### New / American Boxing for Kids. Ages 8 to 12.

/ \$ 115 / 12 hrs

American boxing is an international sport referred to as the Sweet Science. Applying this art is as deep as the ocean, chess, and music. This class introduces the real version of the art as you develop not only authentic skills, but confidence, self esteem, and solid physical fitness. **No class** on Apr 19.

Course **PLD 863.**

26401 Sat 11am to 1230pm **Mar 22 to May 17** Valle Verde G104

## Performing Arts

### Pre-Ballet. Ages 5 to 6. / \$ 70 / 8 hrs

'Look, Mommy -- see me dance!' Children who want to dance, but aren't yet ready for Ballet I, will glow with glee as they are introduced to balance and dance skills. **No class** on Apr 19.

Course **PLD 746.**

26402 Sat 9 to 10am **Mar 29 to May 24** Valle Verde A1215

### Ballet I for Children. Ages 7 to 10. / \$ 70 / 8 hrs

Introduces beginning ballet and barre, and emphasizes proper body alignment and flexibility. **No class** on Apr 19.

Course **PLD 734.**

26403 Sat 10 to 11am **Mar 29 to May 24** Valle Verde A1215

### Vocal Studies for Children. Ages 8 to 12. / \$ 115 / 12 hrs

This intro class for children provides professional and strategic instruction on the proper way to pursue singing as a fine arts craft. **No class** on Apr 19.

Course **PLD 807.**

26404 Sat 900 to 1030am **Mar 22 to May 17** Valle Verde A1201

**Students registered in a piano class must buy a textbook and headphones. See course outline.**

### Piano I for Children. Ages 8 to 12. / \$ 110 / 9 hrs

Provides a positive, enjoyable group experience in the initial approach to playing the piano. Emphasizes establishing good music-reading ability and rhythmic orientation. Introduces the fundamentals of music theory and the keyboard. **No class** on Mar 15.

Course **PLD 724.**

26405 Sat 9 to 10am **Feb 8 to Apr 12** Valle Verde A1333

### Piano II for Children. Ages 8 to 12. / \$ 110 / 9 hrs

Continue piano studies with individual attention and group instruction, focusing on forming and maintaining good habits, basic musical theory, and rhythmic orientation. **Prerequisite:** PLD 724 , Piano I. **No class** on Mar 15.

Course **PLD 759.**

26952 Sat 10 to 11am **Feb 8 to Apr 12** Valle Verde A1333

### Guitar for Children. Ages 8 to 12. / \$ 70 / 8 hrs

Learn to play chord forms, simple melody lines and musical notation. For the beginner yearning to strum beyond a few chords. Provides you the basic technical competence for recreational use of the guitar. **Student Must have own guitar** -- a classical guitar with nylon strings.

Course **PLD 721.**

26407 Sat 10 to 11am **Jan 18 to Mar 8** Valle Verde A2117





## Guitar II for Children. Ages 8 to 12. / \$ 70 / 8 hrs

A continuation of PLD 721, Guitar for Children, the course extends study of harmonic and sight reading skills and chords building. Technical goals include: independence of the fingers and chord building. **Student Must have own guitar** -- a classical guitar with nylon strings. **Prerequisite:** PLD 721, Guitar for Children. **No class** on Apr 19.

Course **PLD 900.**

26409 Sat 10 to 11am **Mar 22 to May 17** Valle Verde A2116

## Guitar for Teens. Ages 13 to 16. / \$ 99 / 12 hrs

Take this opportunity to learn the basic chord forms, simple melody lines and musical notation. Soon you will play songs in folk and rock style.

**Student Must have own guitar** -- a classical guitar with nylon strings.

Course **PLD 891.**

26408 Sat 11am to 1230pm **Jan 18 to Mar 8** Valle Verde A2117



## Young Rembrandts

**Raising generations that value the power, passion and significance of art.**

## Cartoon Drawing. Ages 6 to 12. / \$ 99 / 8 hrs

For kids who need to stay engaged and laughing, our cartooning classes are surely the most fun you can have while learning! This entertaining program combines the innovative hands-on teaching of Young Rembrandts with light-hearted subject matter that engages children, their sense of humor, and their vivid imaginations. Drawings that tell a story also help kids stay on-task, find new solutions to a problem, and communicate ideas and concepts through pictures. **No class** on Apr 19.

Course **PLD 979.**

26410 Sat 11am to noon **Mar 29 to May 24** Valle Verde B151

## Cooking

## Cooking for Kids. Ages 12 to 15. / \$ 95 / 12 hrs

Hey, kids! We can show you how fun and easy cooking can be. Learn to make delicious recipes, from main courses to desserts and snacks, with plenty of tasting along the way. **No class** on Apr 19.

Course **PLD 997.**

26411 Sat 1 to 3pm **Apr 5 to May 17** Valle Verde B153

## Children's / Teen ESL Program

These English as a Second Language courses are for nonnative speakers, and include the vocabulary and reading skills needed for speaking English as a second language. **Student must purchase book at the Valle Verde bookstore.**

Los cursos de inglés como segundo idioma son para los estudiantes que no dominan el inglés. La instrucción incluirá vocabulario y habilidades de lectura necesarias para el éxito en la introducción a continuación en los cursos.

**Compra tu propio libro en la librería Valle Verde.**

## ESL I for Children. Inglés como segundo idioma para niños I. Ages/edades 7 to 12. / \$ 93 / 12 hrs

Course / Curso **PLD 977.**

26412 Sat / Sab 9 to 11am **Jan 25 to Mar 1** Valle Verde B110

## ESL I for Teens. Inglés como segundo idioma para adolescentes I. Ages/edades 12 to 16. / \$ 99 / 12 hrs

Course / Curso **PLD 984.**

26413 Sat / Sab 11am to 1pm **Jan 25 to Mar 1** Valle Verde B101

## ESL II for Children. Inglés como segundo idioma para niños II. Ages/edades 7 to 12. / \$ 93 / 12 hrs

**Prerequisite / Prerequisito:** PLD 977, ESL I for Children / Inglés como segundo idioma para

**No class** on Apr 19.

Course / Curso **PLD 983.**

26414 Sat / Sab 9 to 11am **Mar 22 to May 3** Valle Verde B101

## ESL II for Teens. Inglés como segundo idioma para adolescentes II. Ages/edades 12 to 16. / \$ 99 / 12 hrs

**Prerequisite / Prerequisito:** PLD 984, ESL I for Teens / Inglés como segundo idioma para adolescentes. **No class** on Apr 19.

Course / Curso **PLD 985.**

26416 Sat / Sab 11am to 1pm **Mar 22 to May 3** Valle Verde B108

## Spring Intersession

## Acrylic Painting for Kids. Ages 9 to 11. / \$ 75 / 8 hrs

The students will learn simple techniques in basic sketching to paint animals, flowers, still life, and a landscape, and will use art brushes and acrylic paint on a stretched canvas. We will finish a work of art in each class and recognize the different kinds of art. **Students will purchase supplies.**

Course **PLD 691.**

26417 Mon to Thu 330 to 530pm **Mar 17 to Mar 20** Valle Verde A1326

## Chefs in the Kitchen. Ages 10 to 12. / \$ 125 / 20 hrs

Students learn basic cooking skills, preparing new recipes and several favorites from past years. These recipes are great for kids and can be safely made with little help from adults. All recipes are EASY and FUN for kids to make at home too! **Students will purchase supplies.**

**Note :** Children with food allergies should not take this course.

Course **PLD 665.**

26418 Mon to Fri 830 am to 1230pm **Mar 3 to Mar 7** Valle Verde B153



**Make Your First Video Game.** Ages 8 to 12.  
/ \$ 90 / 10 hrs

Have you ever thought of an idea for a video game which does not exist? Now's your chance to join a class where you'll create an actual game. You'll use an easy-to-learn software to discover the basics of video game design.

Course **PLD 674.**

26420 Mon to Fri 3 to 5pm	<b>Mar 3 to Mar 7</b>	Valle Verde B123
---------------------------	-----------------------	------------------

**Junior Engineers.** Ages 5 to 6. / \$ 110 / 6 hrs

Young students will build fun and simple models using Duplo bricks. By playing with and manipulating models, you'll experience pulleys, levers, gears, wheels and axles while exploring energy, forces, and balance.

Course **PLD 664.**

26424 Mon to Thu 1 to 230 pm	<b>Mar 17 to Mar 20</b>	Mission Del Paso
------------------------------	-------------------------	------------------

**RoboPets.** Kindergarten to second grade. / \$ 110 / 6 hrs

Children begin to explore the world of robotics as they build moving animals that teach the fundamentals of robotic design. Whether learning about animal habitats, or watching gears and pulleys create movement while building dancing birds and robotic dogs, your child is sure to have a great time.

Course **PLD 661.**

26422 Mon to Thu 230 to 4 pm	<b>Mar 17 to Mar 20</b>	Mission Del Paso
------------------------------	-------------------------	------------------

**Drawing with Young Rembrandts Workshop.**  
Ages 6 to 12. / \$ 99 / 8 hrs

The Young Rembrandts program teaches drawing, the fundamental skill of all visual arts. It compliments and expands on existing school art programs, preparing students for goals set forth by the National Standard of Art Education. A fun, educational, and engaging experience for children, the Young Rembrandt curriculum maximizes neuron development and brain patterning function.

Course **PLD 628.**

26433 Mon to Thu 10am to noon	<b>Mar 17 to Mar 20</b>	Mission Del Paso
-------------------------------	-------------------------	------------------



# Senior Adult Program

**Mary Yanez**, Director. Email [sap@epcc.edu](mailto:sap@epcc.edu) or call 915 **831-7801** for more information.

El Paso Community College provides a wide variety of free classes for persons 55 years of age and over. **Seniors must register to attend classes.** When registering, show proof of age with driver's license, birth certificate, or other documents. Classes are held at community locations, city-county senior, nutrition, adult day care, and recreation centers, elderly housing complexes, retirement apartments, and all five EPCC campuses.

**Online registration** is available for returning students. Standard registration procedures apply for courses outside the Senior Adult program.

Go to [epcc.edu](http://epcc.edu) for a step-by-step online Registration Guide, or find this information in the back of this Continuing Education schedule.

## Arts

### Acrylic Painting for Seniors. / free / 24 hrs

This course exposes students to necessary tools and materials to set up a layout for painting, apply techniques to different parts of a painting, mix colors, apply paint, and visualize perspectives. **No class** on Mar 13. **Student purchase supplies.**

Course **SAP 446.**

26358	Mon Wed 1 to 3pm	<b>Jan 22 to Mar 3</b>	Online
26359	Thu 12 to 3pm	<b>Jan 23 to Mar 20</b>	Eastside Sr Ctr



### China Painting. / free / 24 hrs

Introduces students to the basic techniques of china painting. Students apply paint on porcelain materials and use firing techniques to fix the colors desired. **No class** on Mar 12. **Student purchase supplies.**

Course **SAP 445.**

26849	Wed 9am to 12pm	<b>Jan 22 to Mar 19</b>	Officer David Ortiz Rec Ctr
-------	-----------------	-------------------------	-----------------------------

### Crocheting for Beginners. / free / 24 hrs

This class is designed to teach seniors the art of crochet from home. Students will learn a variety of hand techniques, pattern reading and hands-on practice. **No class** on Mar 15. **Student purchase supplies.**

Course **SAP 501.**

26360	Sat 9 to 11am	<b>Jan 25 to Apr 19</b>	Mission Del Paso B109
-------	---------------	-------------------------	-----------------------

### Drawing. / free / 24 hrs

Student will develop individual artworks and experiment with a variety of supports, papers, surfaces, and materials. Students will use pencil, charcoal, Micron pen, mix media is encouraged. This course is for students with an interest in expanding their experience in drawing. **Student purchase supplies. No class** Mar 14.

Course **SAP 117.**

26361	Fri 9am to 12 noon	<b>Jan 24 to Mar 21</b>	Admin Svc Ctr B321
-------	--------------------	-------------------------	--------------------

### Portrait Painting. / free / 24 hrs

Draw a face in proportion, comprehending color mixing and working with the medium of your choice. Select photographs as reference material and work with oils, acrylics, watercolors, or colored pencils. The instructor works with you individually and collectively with handouts, class discussions, and demonstrations. **No class** on Feb 3 and Mar 31. **Student purchase supplies.**

Course **SAP 493.**

26362	Mon 9am to 12pm	<b>Jan 27 to Apr 7</b>	Admin Svc Ctr B321
-------	-----------------	------------------------	--------------------

### Oil Painting for Seniors. / free / 24 hrs

This is a beginner-level class for seniors who want to learn how to paint. It introduces the basic techniques of painting in oil mediums, starting with the basics of drawing, to be able to do a simple sketch. We'll continue with basic knowledge in proportion, and overlap. **Student purchase supplies.**

Course **SAP 447.**

26363	Tue Fri 10am to 12pm	<b>Jan 21 to Feb 28</b>	Online
-------	----------------------	-------------------------	--------

### Seniors Artistic Welding. / free / 24 hrs

Discover artistic welding techniques and produce a design through guided instruction using layout tools, demonstration, and guided practice. Learn plasma cutting and mig welding for a desired artistic product. **No class** on Mar 15. **Student purchase supplies and protective gear.**

Course **SAP 305.**

26851	Sat 8 to 10am	<b>Jan 25 to Apr 19</b>	Valle Verde ATC
-------	---------------	-------------------------	-----------------

## Computers

### Digital Devices for Smart Seniors. / free / 24 hrs

In this intro course, seniors explore the various digital devices on the market. You'll bring your smart phones, iPads, and electronic notebook devices to class to learn their various uses and functions. **No class** on Feb 4 and 6.

Course **SAP 615.**

26853	Tue Thu 1230 to 230pm	<b>Jan 21 to Mar 6</b>	Admin Svc Ctr B322
-------	-----------------------	------------------------	--------------------

### Intro to Computers and Windows. / free / 24 hrs

Teaches the basic instruction to operate a personal computer. Learn how to use Windows, the mouse, screens, menus, and graphics. You'll be introduced to the terminology associated with Windows usage. **No class** on Mar 15.

Course **SAP 600.**

26857	Sat 9 to 11am	<b>Jan 25 to Apr 19</b>	Admin Svc Ctr B320
-------	---------------	-------------------------	--------------------

### Intro to EPCC Technology Services. / free / 24 hrs

This course provides the basic instruction necessary to successfully use EPCC Technology Services. **No class** on Mar 15.

Course **SAP 901.**

26364	Sat 1105am to 105pm	<b>Jan 25 to Apr 19</b>	Admin Svc Ctr B324
-------	---------------------	-------------------------	--------------------



## Keyboarding on the Computer. / free / 24 hrs

Prepares you to use the computer keyboard, emphasizing techniques and training. You'll apply what you learn to complement your ability, as you master the mouse and personal computer.

Course **SAP 903.**

26858	Mon Wed 1 to 3pm	<b>Jan 22 to Mar 3</b>	Rio Grande B509
-------	------------------	------------------------	-----------------

## Intro to MS Word. / free / 24 hrs

This introduces you to Microsoft Word, which makes professional documents like announcements, letters, resumes, and reports. You must have basic knowledge in using computers, and know how to type. **Prerequisite :** SAP 600, Intro to Computers and Windows. **No class** Feb 6, Mar 13, and Mar 15.

Course **SAP 670.**

26863	Thu 1 to 3pm	<b>Jan 23 to Apr 24</b>	Valle Verde B123
26365	Sat 1105am to 105pm	<b>Jan 25 to Apr 19</b>	Mission Del Paso E112

## MS Excel. / free / 24 hrs

Introduces the program Microsoft Excel, which creates and manipulates spreadsheets. You'll learn to organize and balance data in an understandable format. **Note :** We suggest you take SAP 600, Intro to Computers and Windows, before taking this class. **No class** on Mar 15.

Course **SAP 630.**

26366	Sat 1105am to 105pm	<b>Jan 25 to Apr 19</b>	Admin Svc Ctr B320
-------	---------------------	-------------------------	--------------------

## MS PowerPoint. / free / 24 hrs

Introduces you to the program PowerPoint, which creates professional presentations using the Microsoft Office interface. Learn its various tools to create your own slide show. **Note :** We suggest you take SAP 600, Intro to Computers and Windows, before taking this class. **No class** on Mar 15.

Course **SAP 307.**

26367	Sat 9 to 11am	<b>Jan 25 to Apr 19</b>	Admin Svc Ctr B324
-------	---------------	-------------------------	--------------------

## Seniors Exploring the Internet. / free / 24 hrs

Learn to access the World Wide Web network and become familiar with its many uses and applications. The instructor will help you communicate with people around the world. You must have some computer experience before taking this class. **No class** on Mar 11.

Course **SAP 904.**

26368	Sat 1 to 3pm	<b>Jan 21 to Apr 15</b>	Rio Grande B509
-------	--------------	-------------------------	-----------------

## Simple Steps for Using Technology. / free / 24 hrs

EPCC online classes require Microsoft Teams software. This course introduces the basics of Teams using simple step-by-step instructions. If you have little or no experience with technology, or using Teams, you'll gain enough knowledge and confidence to register for online courses. **No class** on Feb 4 and 6.

Course **SAP 631.**

26867	Tue Thu 10am to 12pm	<b>Jan 21 to Mar 6</b>	Admin Svc Ctr B320
-------	----------------------	------------------------	--------------------

## Social Media. / free / 24 hrs

Introduces you to downloading, registering, and using social media platforms like Facebook, Instagram, Twitter, and Snapchat. **No class** on Mar 15.

Course **SAP 476.**

26868	Sat 10am to 12pm	<b>Jan 25 to Apr 19</b>	Admin Svc Ctr B580
-------	------------------	-------------------------	--------------------

## Dance and Exercise

### Ballroom Dance for Seniors. / free / 24 hrs

Teaches ballroom dance techniques and essential steps in dancing the Waltz, Fox Trot, Rhumba, and Jitterbug, to maintain an active, healthy body. Dances learned in class may be used in performance. **No class** Mar 10, 12, and 31.

Course **SAP 470.**

26870	Mon Wed 10 to 11am	<b>Jan 22 to Apr 23</b>	Eastside Rec Ctr
-------	--------------------	-------------------------	------------------

## Chair Fitness Yoga. / free / 24 hrs

Improving strength, flexibility, and balance are the keys to this invigorating, fun, and safe chair yoga course. A variety of specific exercises will target the upper and lower body to effectively strengthen and stretch all major muscles for improved balance and mobility. Breathing techniques help in performing exercises. **Bring your own home or low-cost equipment :** scarfs, face or kitchen towels, a cane, a 1-in wood dowel, light-to-moderate handheld weights, and stretch bands. Our goal is to achieve your own personal best. **No class** on Feb 4 and 6, and Mar 11 and 13.

Course **SAP 123.**

26369	Tue Thu 930 to 11am	<b>Jan 21 to Mar 27</b>	Admin Svc Ctr B322
-------	---------------------	-------------------------	--------------------

## Exercise to Music. / free / 24 hrs

This maintains a regular low-impact program of exercise to music, to help you stay healthy and increase mobility. Positive group interaction and awareness of body movement improve your fitness level. **No class** on Mar 11 and 13.

Course **SAP 403.**

26874	Tue Thu 9 to 10am	<b>Jan 21 to Apr 17</b>	Hilos de Plata Sr Ctr
-------	-------------------	-------------------------	-----------------------

## Folklorico at 55. / free / 24 hrs

Offers seniors a low-impact dance program, familiarizing you with unique dances from various regions of Mexico. You'll learn about the customs, history of fandango dances, costumes, steps, techniques, and choreography that are traditional to each region of Mexico. **No class** on Mar 11.

Course **SAP 430.**

26876	Tue 1015am to 1215pm	<b>Jan 21 to Apr 15</b>	Hilos de Plata Sr Ctr
-------	----------------------	-------------------------	-----------------------

## Gentle Way Yoga. / free / 24 hrs

Yoga improves heart health through the mind, body and spirit, as well as flexibility, strength and concentration. Learn deep breathing, meditation, and relaxation techniques using chairs and assistive props. **No class** on Mar 15.

Course **SAP 109.**

26370	Sat 10am to 12pm	<b>Jan 25 to Apr 19</b>	Online
-------	------------------	-------------------------	--------

## Latin Dance. / free / 24 hrs

Seniors learn dance floor techniques using popular Latin rhythms, adding smooth body movements, steps, and choreographed performance displays. Partners are recommended but not required. **No class** on Mar 14 and Apr 18.

Course **SAP 303.**

26877	Fri 10am to 12pm	<b>Jan 24 to Apr 25</b>	Happiness Sr Ctr
-------	------------------	-------------------------	------------------

## Line Dance. / free / 24 hrs

Introduces older adults to popular and traditional individual line dancing, including country, Latin, and other rhythms offering both fun and exercise.

Course **SAP 455 /** Beginners / No class Mar 10 to Mar 14, and Mar 3

26878	Tue 930 to 1130am	<b>Jan 21 to Apr 15</b>	Transmountain 1405
26371	Tue 2 to 4pm	<b>Jan 21 to Apr 15</b>	David Ortiz Rec Ctr
26372	Mon 545 to 745pm	<b>Jan 27 to Apr 28</b>	Galatzan Rec Ctr

/ Class meets Mar 10 to Mar 14, and Mar 31

26879	Tue 1 to 2pm	<b>Mar 4 to Apr 29</b>	Eastside Sr Ctr
26880	Thu 1030 to 1130	<b>Mar 6 to May 1</b>	Eastside Sr Ctr

Course **SAP 455 /** Intermediate

26373	Tue 1030am to 1230pm	<b>Jan 21 to Apr 15</b>	Eastside Sr Ctr
26881	Mon Wed 12 to 1pm	<b>Jan 22 to Apr 23</b>	Eastside Sr Ctr
26882	Tue Thu 1230 to 130pm	<b>Jan 21 to Apr 17</b>	San Juan Sr Ctr
26883	Tue Thu 2 to 3pm	<b>Jan 21 to Apr 17</b>	Polly Harris Sr Ctr

Course **SAP 455 /** Advanced

26884	Tue Thu 12 to 1pm	<b>Jan 21 to Apr 17</b>	Sylvia Carreon Ctr
-------	-------------------	-------------------------	--------------------

Call 915 **831-7801** or email [sap@epcc.edu](mailto:sap@epcc.edu) for class information.

### Qi Gong. / free / 24 hrs

You'll be introduced to the 12 stretching forms of Qi Gong, a mind-body-spirit practice that improves your mental and physical health, integrating posture movements, breathing techniques, self massage, sound, and focused intent. **No class** on Mar 14 and 15, and Apr 18.

Course **SAP 302.**

26903 Fri Sat 615 to 715pm **Jan 24 to Apr 25** Online

### Tai Chi for Seniors. / free / 24 hrs

Tai Chi -- slow, controlled movement and breathing techniques -- improves health, fitness level, ability to focus, balance, flexibility, coordination, stamina, strength, body posture, power, and endurance. Exercises emphasize a calm and peaceful mind. **No class** on Mar 14 and 15, and Apr 18.

Course **SAP 300.**

26904 Fri Sat 5 to 6pm **Jan 24 to Apr 25** Online

## Languages

### Conversational Spanish for Beginners. / free / 24 hrs

Designed for senior adults who have minimal command of the Spanish language. This self-paced program focuses on learning the language with other students. **No class** on Mar 12.

Course **SAP 415.**

26374 Wed 10am to 12pm **Jan 22 to Apr 16** Northwest C212

### ESL English as a Second Language. / free / 24 hrs

( Este curso de inglés está diseñado para adultos mayores con un dominio mínimo del idioma inglés. El curso básico tiene un tono motivacional y desarrolla su confianza en sí mismo para hablar el idioma inglés. )

This course is designed for older adults with minimal command of English. The basic course has a motivational tone and develops your self-confidence in speaking English. **No class** on Mar 14 and Apr 18.

Course **SAP 425.**

26375 Fri 10am to 12pm **Jan 24 to Apr 25** Admin Svc Ctr B580

## Music

### Chorus. / free / 24 hrs

Offers group singing of songs in Spanish, creating a harmony of voices. Learn basic knowledge of the notes that highlight your musical abilities. **No class** on Mar 11.

Course **SAP 435.**

26376 Tue 11am to 1pm **Jan 21 to Apr 15** Gary del Palacio Rec Ctr

### Guitar for Beginners. / free / 24 hrs

Learn the fundamentals of guitar playing, and new techniques of hand coordination in playing popular Mexican and American songs, basic rhythms, melodies, and chords. **No class** Mar 14, Apr 18. **Bring your own guitar.**

Course **SAP 420.**

26905 Fri 10am to 12pm **Jan 24 to Apr 25** Gary Del Palacio Rec Ctr

### Intermediate Guitar Rondalla. / free / 24 hrs

Lets you play guitar in a Rondalla-style playing and singing group, performing popular Mexican and American songs, and applying rhythm, guitar chords, and chorus techniques. **No class** Mar 10. **Must know how to play guitar.**

Course **SAP 486.**

26906 Mon 10am to 1pm **Jan 27 to Mar 24** San Juan Sr Ctr

### Mariachi Course for Seniors. / free / 24 hrs

This course introduces advanced music students to techniques used in interpreting mariachi music from the regions in Mexico. Previous musical experience and proficiency with instrument required. Includes performances for special community events. **No class** on Mar 15. **Must know how to play guitar, trumpet, or violin.**

Course **SAP 421.**

26907 Sat 11 to 1pm **Jan 25 to Apr 19** Gary Del Palacio Rec Ctr

## Personal Enrichment

### Beautifying Lives Through Makeup. / free / 24 hrs

This course helps students master important techniques in how to do their own makeup professionally. The student will learn to create contemporary looks for their everyday glamour. After completing this course, the student will be able to enhance their own or other women's beautiful features, disguise minor faults in one's appearance, and express themselves creatively. **No class** on Mar 12.

Course **SAP 313.**

26377 Wed 9 to 11am **Jan 22 to Apr 16** Admin Svc Ctr B322

### Expressions of Life. / free / 24 hrs

This class engages adults 55 years and older in a process of documenting their lives using storytelling, visual arts, music, and creative writing. Covers themes such as country of origin, language, work ethic, food, traditions, and community celebration to focus on group discussions and artistic projects. **No class** on Feb 4 and Mar 11.

Course **SAP 399.**

26908 Tue 3 to 5pm **Jan 21 to Apr 22** Admin Svc Ctr B321

### Getting Older Does Not Have to be Hard. / free / 24 hrs

This class provides information and insight on topics to assist older adults and caregivers in preparing for services for their safety and wellbeing. In general, life can throw us a curve ball, but with preparation and knowledge, any of life's obstacles can be managed with ease. General topics cover caregiving, getting your life organized, the six domains of well being, having a positive attitude, legal matters, and so much more. **No class** on Mar 15.

Course **SAP 116.**

26378 Sat 9 to 11am **Jan 25 to Apr 19** Admin Svc Ctr B321

### Fashion Hair and Makeup. / free / 24 hrs

This course introduces students to basic hair care, nail care, accessories, wigs, and extension applications. The latest fashion trends and styles are discussed, to help students attend to their care and feel their best. Students will explore fashion styles, accessories, and hair options that complement their personalities while learning in a judgment-free environment. Join this amazing class and feel more confident and beautiful. **No class** on Mar 14 and Apr 18. **Student purchase supplies.**

Course **SAP 119.**

26379 Fri 9 to 11am **Jan 24 to Apr 25** Admin Svc Ctr B322

Wellness

Complementary and Alternative Therapies.

/ free / 24 hrs

This course will explain the concepts of complementary, alternative, and integrative medicine, including aromatherapy, ayurveda, traditional Chinese medicine, homeopathy, curanderismo herbal medicine, integrative and functional medicine, preventive nutrition, and natural supplements against oxidative stress as we age.

Course **SAP 310.**

26380 Tue Thu 530 to 730pm **Jan 21 to Feb 27** Transmountain 1124

Gardening for Healthy Living. / free / 24 hrs

This course is designed to teach seniors containerized gardening for the home. Students will cultivate a variety of interior plants from preparing the soil to planting the seed, watering, and growing healthy plants. **Student purchase supplies. No class** on Mar 11.

Course **SAP 106.**

26381 Tue 230 to 430pm **Jan 21 to Apr 15** Sylvia Carreon Ctr

Herbal Medicine. / free / 24 hrs

This course will answer questions about a variety of herbs, their differences, and their healing properties, and cover a plethora of herbs and supplements, including medicinal herbs used in our border area.

Course **SAP 311.**

26382 Mon Wed 530 to 730pm **Jan 22 to Mar 3** Transmountain 1125

Healthy Nutrition for Seniors. / free / 24 hrs

This course introduces older adults to the process of healthy meal planning menus and food preparation, which reduces health risks and fosters healthy nutrition. You'll work with the instructor as a team to prep, cook, and taste the menu assignments in class. Class lectures include traditional food preparation and optional tasty substitutes. **Student purchase supplies.**

Course **SAP 251.**

26383 Mon Wed 12 to 2pm **Jan 22 to Mar 3** Valle Verde B153

Intro to Mind-Body Medicine. / free / 24 hrs

This course helps you know the different modalities within the broad range of mind-body medicine. You'll learn mind-body modalities for stress reduction, their benefits in improving overall health, and healing from and preventing diseases. **No class** on Mar 12.

Course **SAP 426.**

26384 Wed 6 to 8pm **Jan 22 to Apr 16** Admin Svc Ctr B321

Meditation for Tranquility. / free / 24 hrs

Meditation is a mind - body practice with a long history of increasing calmness and physical relaxation, improving psychological balance, coping with illness, and enhancing overall health and well being. These practices focus on the interactions among the brain, mind, body, and behavior, to learn to meditate and explore the different forms and techniques used in various traditions.

Course **SAP 428.**

26385 Tue Thu 6 to 7pm **Jan 21 to Apr 17** Online

Senior Centers

**Eastside Regional** Recreation Center, the Beast  
915 **212-0580** / 13501 Jason Crandall Dr, El Paso 79938

**Eastside Senior** Center  
915 **212-2070** / 3200 Fierro Dr, El Paso 79935

**Galatzan** Recreation Center  
915 **212-0734** / 650 Wallenberg Dr, El Paso 79912

**Gary Del Palacio** Recreation Center  
915 **212-0560** / 3001 Parkwood St, El Paso 79925

**Happiness** Senior Center  
915 **212-0435** / 563 N Carolina Dr, El Paso 79915

**Hilos De Plata** Senior Center  
915 **212-0410** / 4451 Delta Dr, El Paso 79905

**Multipurpose** Recreation Center  
915 **212-2295** / 9031 Viscount Blvd, El Paso 79925

**Officer David Ortiz** Recreation Center  
915 **212-0430** / 563 N Carolina Dr, El Paso 79915

**Polly Harris** Senior Center  
915 **212-0733** / 650 Wallenberg Dr, El Paso 79912

**San Juan** Senior Center  
915 **212-0486** / 5701 Tamburo Ct, El Paso 79905

**Sylvia A Carreon** Community Center  
915 **212-0788** / 709 Lomita Dr, El Paso 79907

El Paso Community College  
campus locations

**Administrative Services Center** ASC, EPCC  
915 **831-3722** / 9050 Viscount Blvd, El Paso 79925

**Mission Del Paso** MDP campus of EPCC  
915 **831-3722** / 10700 Gateway East, El Paso 79927

**Northwest** NW campus of EPCC  
915 **831-3722** / 6701 South Desert Rd, El Paso 79932

**Rio Grande** RG campus of EPCC  
915 **831-3722** / 100 W Rio Grande Ave, El Paso 79902

**Transmountain** TM campus of EPCC  
915 **831-3722** / 9570 Gateway Blvd N, El Paso 79924

**Valle Verde** VV campus of EPCC  
915 **831-3722** / 919 Hunter Dr, El Paso 79915





Tuesdays & Thursdays  
**February 6 – May 2**  
6:30pm – 8:30pm

[elpasosbdc.net](http://elpasosbdc.net)

The **Small Business Management Institute** is designed to provide valuable insight and information on owning and operating a **SUCCESSFUL BUSINESS**. Students will learn how to organize and grow their business profitably in strategic planning, operations, management, and compete in the marketplace. A Small Business Management Certificate will be awarded to each student who completes the **ENTIRE** series. Lenders and bank partners favor small business owners who successfully complete the program. Entrance requirement is 17 years of age.

### SPRING 2024 Schedule

Sessions	Date (Tuesday & Thursday)
Introduction to Strategic Planning	February 6 & 8
Building a Strategic Plan	February 13 & 15
Introduction to Marketing	February 20 & 22
Developing a Marketing Action Plan	February 27 & 29
Human Resources	March 5 & 7
Business and Contract Law	March 19 & 21
Administration and Accounting	March 26 & 28
Understanding Financial Statements	April 2 & 4
Analyzing Financial Statements	April 9 & 11
Forecasting and Break-Even Analysis	April 16 & 18
Financing the Business	April 23 & 25
Business Resources	April 30 & May 2

### REGISTER EARLY and SAVE \$20

- **Registration Fee: \$380** – before February 1, 2024; \$400 after February 1, 2024
- **Single Session Registration Fee: \$80** – **Pre-registration is required.** Payment by American Express, Visa, MasterCard and Discover is accepted. Check or money order payment payable to El Paso Community College.
- **Register on-line at [elpasosbdc.net](http://elpasosbdc.net).** Schedule is subject to change.
- **Refunds:** A 100% refund will be processed if notification of drop is received 24 hours before the first class.
- **Location:** Classes will be held in-person at the SBDC



Proud Members of the Texas South-West SBDC Network

## SBMI - Session Descriptions

### ► Introduction to Strategic Planning

Introduces small business success, the maturity phases, the importance of practical management skills, strategic planning, and the causes that keep business owners from achieving success.

### ► Building a Strategic Plan

Reviews strategic planning elements: (1) external environment assessment, (2) internal business operation, (3) strengths, weaknesses, opportunities, and threats (SWOT), (4) mission statement, (5) critical growth areas, (6) objectives and action plans; and (7) financial projections

### ► Introduction to Marketing

Introduces marketing and market research; examines the importance of analyzing the marketplace research, processes, and techniques for defining and understanding target markets and competition.

### ► Developing a Marketing Action Plan

Examines marketing elements and the steps in developing an action plan: (1) setting objectives, (2) translating objectives into sales goals, (3) identifying strategies and tactics; (4) developing a calendar and budget; and (5) evaluating efforts

### ► Human Resources

Introduces employee administration issues, laws, compensation, and an employee handbook.

### ► Business and Contract Law

Examines administrative and legal issues; reviews business structures and the advantages and disadvantages of each; the laws protecting employees, consumers, and the industry; including essential contract elements and the standard contracts; also covers patent, trademark, and copyright laws

### ► Administration and Accounting

Reviews the importance of accurate recordkeeping and maintaining good financial records. The steps in developing a recordkeeping system are identified and examined. Identifies essential records needed for an effective recordkeeping system, including a basic introduction to computer and small business applications.

### ► Understanding Financial Statements

Introduces the three major financial statements: balance sheet, income and cash flow statement.

### ► Analyzing Financial Statements

Key ratios are used to interpret financial information on performance, decision making, and the future of the business.

### ► Forecasting and Break-Even Analysis

Covers the process of projecting start-up costs, preparing financial projections, and break-even analysis; the purpose and use of proforma statements; evaluating amount of financing needed, and preparing a loan proposal.

### ► Financing the Business

Covers capital formation issues and major types of financing. Commercial lending requirements and the five "C's" of lending are examined; accessing the major types of finance programs available: SBA guarantee-loan programs, micro-loan programs, revolving-loan funds, and venture capital. Learn how to develop a relationship with the lender to successfully acquire a loan.

### ► Business Resources

Representatives from local organizations that provide business and resource assistance give students an opportunity to ask about the services they offer and questions regarding their business plans.



**EL PASO  
COMMUNITY  
COLLEGE**

**Keeping your small business profitable is a constant challenge. The SBDC offers no-cost business advising to help you create and understand the best practices to grow and succeed.**

**Detailed information can be found @ [elpasosbdc.net](http://elpasosbdc.net)**

Proud Members of the Texas South-West SBDC Network



Funded in part through the State of Texas and a Cooperative Agreement with the U.S. Small Business Administration. Reasonable accommodations for persons with disabilities or limited English proficiency will be made if requested at least two weeks in advance. Contact the SBDC at (915) 831-7742.

The El Paso County Community College District does not discriminate on the basis of race, color, national origin, religion, gender, age, disability, veteran status, sexual orientation, or gender identity.



intuit  
**quickbooks**  
for SMALL BUSINESS



Spring 2025 Series starts:  
Tuesday, February 4  
Wednesday, February 5  
Thursday, February 6  
12:00pm – 2:00pm  
**LIVE WEBINAR**

## INTRODUCTION to QUICKBOOKS ONLINE

Tuesday, February 4, 2025  
Introduction and Setup

Wednesday, February 5, 2025  
Transactions and Bank Feed Introduction

Thursday, February 6, 2025  
Advanced Features, Reports and Reconciliation

- **Registration Fee: \$175** – includes QuickBooks Online workbooks; 1-hour 1 on 1 session during series; and 1) 1-hour consultation any time after the series.  
Payment by American Express, Visa, MasterCard, and Discover is accepted. Check or money order payment payable to El Paso Community College. Register on-line at [elpasosbdc.net](http://elpasosbdc.net).  
**Schedule is subject to change.**
- **Refunds:** A 100% refund will be processed if notification of drop is received 24 hours before the first-class meeting.
- **Location:** Classes are held at the SBDC 9050 Viscount Blvd., Bldg. B., #B520



Proud Members of the Texas South-West SBDC Network



Funded in part through the State of Texas and a Cooperative Agreement with the U.S. Small Business Administration. Reasonable accommodations for persons with disabilities or limited English proficiency will be made if requested at least two weeks in advance. Contact the SBDC at (915) 831-7742. The El Paso County Community College District does not discriminate on the basis of race, color, national origin, religion, gender, age, disability, veteran status, sexual orientation, or gender identity.



# EPCC Language Institute

Go to [li@epcc.edu](mailto:li@epcc.edu) or call 915 831-2154.

The mission of IEP, the Intensive English Program within the Language Institute, is to prepare students and professionals to acquire English proficiency to meet their personal, academic, and career goals. We are committed to offering classes delivered by highly qualified and competent faculty members in a dynamic and effective environment with the most innovative and supportive of resources.

**The intermediate levels of IEP use terminology applicable to technical and business writing**, to develop proofreading and editing skills relevant to job-related contexts required for further advancement in the labor force. The emphasis is on enhancing effective written and oral communication skills for business applications in the workforce.

## Intensive English Program : Fast Track

The program has six levels that can be completed within a year. Each level includes three courses: Reading / Writing, Listening / Speaking, and Grammar. Each has 200 hours of instruction per level.

## Intensive English Program : Weekdays and Saturdays

The program has 12 levels offered on weekdays or Saturdays. Each level includes three courses: Reading / Writing, Listening / Speaking, and Grammar, with 100 hours of instruction for each level.

## Advanced Grammar : Writing and Conversation.

Online in sync.

Intended for ESL students who already have a solid foundation in the fundamentals of English. The courses are fast-paced for independent-learning, self-motivated and disciplined students who take charge of their learning with many independent-study activities outside class time. **Students must have completed IEP 262 and 162.**

Students must attend class at the assigned time, with their web camera and microphone turned on during class. Basic computer skills and knowledge are required, including the ability to use Microsoft Word, email applications, the Internet, and so forth.

## Important information / Información importante

**An IEP placement exam** is needed to register. Call us to make an appointment for the exam. / **Examen de IEP** es necesario antes de inscribirse en cursos de inglés intensivo. Llama para hacer una cita para el examen.

## Fast Track requires registration in two concurrent courses.

You must pay in full when you register, before the first day of class; no full refunds for either course on or after the first day of the first class in each Fast Track level. / **Inscripción y pago de Fast Track es requerido en dos cursos simultáneos.** El pago completo es requerido para los dos cursos de cada nivel de Fast Track antes del primer día de clase, no hay reembolso completo para cualquier de los dos cursos en el primer o después del primer día de clases del primer curso.

**You must pay in full** when you register. Registration for spring begins December 2, 2024. The last day to register is the Friday before the first day of classes, if space is available. / **El pago completo es requerido** al momento de la inscripción. Inscripción para clases del ciclo de primavera inicia el 2 de diciembre del 2024. Último día de inscripción es el viernes previo al primer día de clases; si hay cupo.

**EPCC's refund policy** details appear under General Information in this schedule of classes. / **Requisitos de reembolso** : Información en la Sección General de este horario de clases.

**The IEP is full immersion.** Only the target language is spoken in class. / **El programa de inglés intensivo es de inmersión total.** Solo se habla el idioma inglés en las clases.

## IEP Fast Track. Classes in person. / 200 hrs / 20 ceus

Cycle I is January 7, 2025 to February 21, 2025.

Cycle II is February 24 to April 17, 2025.

Cycle III is April 28 to June 13, 2025

**Full payment** is required at time of registration. A registration referral form from the Language Institute is required to enroll. **El pago completo** es requerido al momento de la inscripción. Se requiere forma de inscripción del Language Institute para inscribirse.

**No classes** Jan 20, Mar 10 to 14, Mar 31, and May 26, 2025.

## Fast Track English I, A and B. / \$ 554

Courses **IEP 211** and **212**.

26257, 26258 Mon to Fri 8am to 230pm	<b>Jan 7 to Feb 21</b>	Valle Verde 14
26259, 26260 Mon to Fri 8am to 230pm	<b>Feb 24 to Apr 17</b>	Valle Verde 14
26261, 26262 Mon to Fri 8am to 230pm	<b>Apr 28 to Jun 13</b>	Valle Verde 14

## Fast Track English II, A and B. / \$ 554

Courses **IEP 221** and **222**.

26263, 26264 Mon to Fri 8am to 230pm	<b>Jan 7 to Feb 21</b>	Valle Verde 16
26265, 26266 Mon to Fri 8am to 230pm	<b>Feb 24 to Apr 17</b>	Valle Verde 16
26267, 26268 Mon to Fri 8am to 230pm	<b>Apr 28 to Jun 13</b>	Valle Verde 16

## Fast Track English III, A and B. / \$ 554

Courses **IEP 231** and **232**. Equivalent to WECM courses COMG 1000 and 1001.

26270, 26271 Mon to Fri 8am to 230pm	<b>Jan 7 to Feb 21</b>	Valle Verde 17
26272, 26273 Mon to Fri 8am to 230pm	<b>Feb 24 to Apr 17</b>	Valle Verde 17
26275, 26276 Mon to Fri 8am to 230pm	<b>Apr 28 to Jun 13</b>	Valle Verde 17

## Fast Track English IV, A and B. / \$ 554

Courses **IEP 241** and **242**. Equivalent to WECM courses COMG 1004 and 1004.

26277, 26278 Mon to Fri 8am to 230pm	<b>Jan 7 to Feb 21</b>	Valle Verde 18
26279, 26280 Mon to Fri 8am to 230pm	<b>Feb 24 to Apr 17</b>	Valle Verde 18
26281, 26285 Mon to Fri 8am to 230pm	<b>Apr 28 to Jun 13</b>	Valle Verde 18

**Fast Track V, A and B. / \$ 554**

Course **IEP 251** and **252.**

26286, 26806	Mon to Fri 8am to 230pm	<b>Jan 7 to Feb 21</b>	Valle Verde 19
26288, 26289	Mon to Fri 8am to 230pm	<b>Feb 24 to Apr 17</b>	Valle Verde 19
26290, 26291	Mon to Fri 8am to 230pm	<b>Apr 28 to Jun 13</b>	Valle Verde 19

**Fast Track English VI, A & B. / \$ 554**

Course **IEP 261** and **262.**

26292, 26293	Mon to Fri 8am to 230pm	<b>Jan 7 to Feb 21</b>	Valle Verde 20
26294, 26295	Mon to Fri 8am to 230pm	<b>Feb 24 to Apr 17</b>	Valle Verde 20
26296, 26297	Mon to Fri 8am to 230pm	<b>Apr 28 to Jun 13</b>	Valle Verde 20

**IEP Morning. Classes in person.**  
**/ 100 hrs / 10 ceus / Cycles I, II and III**

**Full payment** is required at time of registration. A registration referral form from the Language Institute is required to enroll.  
**El pago completo** es requerido al momento de la inscripción. Se requiere forma de inscripción del Language Institute para inscribirse.

**Cycle I : January 7 to February 21, 2025**

**No classes** on January 20, 2025.

**Intensive English I-A. / \$ 277**

Course **IEP 111.**

26298	Mon to Fri 9 to 1150am	<b>Jan 7 to Feb 21</b>	Valle Verde 21
-------	------------------------	------------------------	----------------

**Intensive English I-B. / \$ 277**

Course **IEP 112.**

26299	Mon to Fri 9 to 1150am	<b>Jan 7 to Feb 21</b>	Valle Verde 30A
-------	------------------------	------------------------	-----------------

**Intensive English II-A. / \$ 277**

Course **IEP 121.**

26300	Mon to Fri 9 to 1150am	<b>Jan 7 to Feb 21</b>	Valle Verde 22
-------	------------------------	------------------------	----------------

**Intensive English III-A. / \$ 277**

Course **IEP 131.** Equivalent to WECM course COMG 1000. ....

26301	Mon to Fri 9 to 1150am	<b>Jan 7 to Feb 21</b>	Valle Verde 24
-------	------------------------	------------------------	----------------

**Intensive English IV-A. / \$ 277**

Course **IEP 141.** Equivalent to WECM course COMG 1004. ....

26302	Mon to Fri 9 to 1150am	<b>Jan 7 to Feb 21</b>	Valle Verde 29
-------	------------------------	------------------------	----------------

**Intensive English V-A. / \$ 277**

Course **IEP 151.**

26303	Mon to Fri 9 to 1150am	<b>Jan 7 to Feb 21</b>	Valle Verde 31A
-------	------------------------	------------------------	-----------------

**Intensive English VI-A. / \$ 277**

Course **IEP 161.**

26304	Mon to Fri 9 to 1150am	<b>Jan 7 to Feb 21</b>	Valle Verde 31B
-------	------------------------	------------------------	-----------------

**A registration referral form** from the Language Institute is required to enroll in classes.

( **Se requiere forma de inscripción** del Language Institute para inscribirse. )

**Cycle II : February 24 to April 17, 2025**

**No classes** on Mar 10 through 14, and Mar 31, 2025.

**Intensive English I-B. / \$ 277**

Course **IEP 112.**

26305	Mon to Fri 9 to 1150	<b>Feb 24 to Apr 17</b>	Valle Verde 21
-------	----------------------	-------------------------	----------------

**Intensive English II-A. / \$ 277**

Course **IEP 121.**

26306	Mon to Fri 9 to 1150am	<b>Feb 24 to Apr 17</b>	Valle Verde 30A
-------	------------------------	-------------------------	-----------------

**Intensive English II-B. / \$ 277**

Course **IEP 122.**

26307	Mon to Fri 9 to 1150am	<b>Feb 24 to Apr 17</b>	Valle Verde 22
-------	------------------------	-------------------------	----------------

**Intensive English III-B. / \$ 277**

Course **IEP 132.** Equivalent to WECM course COMG 1001.

26308	Mon to Fri 9 to 1150am	<b>Feb 24 to Apr 17</b>	Valle Verde 24
-------	------------------------	-------------------------	----------------

**Intensive English IV-B. / \$ 277**

Course **IEP 142.** Equivalent to WECM course COMG 1004.

26309	Mon to Fri 9 to 1150am	<b>Feb 24 to Apr 17</b>	Valle Verde 29
-------	------------------------	-------------------------	----------------

**Intensive English V-B. / \$ 277**

Course **IEP 152.**

26310	Mon to Fri 9 to 1150am	<b>Feb 24 to Apr 17</b>	Valle Verde 31A
-------	------------------------	-------------------------	-----------------

**Intensive English VI-B. / \$ 277**

Course **IEP 162.**

26311	Mon to Fri 9 to 1150am	<b>Feb 24 to Apr 17</b>	Valle Verde 31B
-------	------------------------	-------------------------	-----------------

**Cycle III : April 28 to June 13, 2025**

**No classes** May 26, 2025.

**Intensive English I-A. / \$ 277**

Course **IEP 111.**

26312	Mon to Fri 9 to 1150am	<b>Apr 28 to Jun 13</b>	Valle Verde 21
-------	------------------------	-------------------------	----------------

**Intensive English II-A. / \$ 277**

Course **IEP 121.**

26313	Mon to Fri 9 to 1150am	<b>Apr 28 to Jun 13</b>	Valle Verde 22
-------	------------------------	-------------------------	----------------

**Intensive English II-B. / \$ 277**

Course **IEP 121.**

26314	Mon to Fri 9 to 1150am	<b>Apr 28 to Jun 13</b>	Valle Verde 30A
-------	------------------------	-------------------------	-----------------

**Intensive English III-A. / \$ 277**

Course **IEP 131.** Equivalent to WECM course COMG 1000. ....

26315	Mon to Fri 9 to 1150am	<b>Apr 28 to Jun 13</b>	Valle Verde 24
-------	------------------------	-------------------------	----------------

**Intensive English IV-A. / \$ 277**

Course **IEP 141.** Equivalent to WECM course COMG 1004. ....

26317	Mon to Fri 9 to 1150am	<b>Apr 28 to Jun 13</b>	Valle Verde 29
-------	------------------------	-------------------------	----------------

### Intensive English V-A. / \$ 277

Course **IEP 151.**

26318 Mon to Fri 9 to 1150am **Apr 28 to Jun 13** Valle Verde 31A

### Intensive English VI-A. / \$ 277

Course **IEP 161.**

26319 Mon to Fri 9 to 1150am **Apr 28 to Jun 13** Valle Verde 31B

**IEP Saturday. Classes in Person.**  
/ 100 hrs / 10 CEUs / Cycle I

**Full payment** is required at time of registration. A registration referral form from the Language Institute is required to enroll.  
**El pago completo** es requerido al momento de la inscripción. Se requiere forma de inscripción del Language Institute para inscribirse.

**Cycle I : January 11 to April 26, 2025**

**No classes** on March 15, 2025.

### Intensive English I-A. / \$ 277

Course **IEP 111.**

26320 Sat 8am to 305pm **Jan 11 to Apr 26** Valle Verde 14

### Intensive English I-B. / \$ 277

Course **IEP 112.**

26321 Sat 8am to 305pm **Jan 11 to Apr 26** Valle Verde 16

26322 Sat 8am to 305pm **Jan 11 to Apr 26** Valle Verde 21

### Intensive English II-A. / \$ 277

Course **IEP 121.**

26324 Sat 8am to 305pm **Jan 11 to Apr 26** Valle Verde 17

26325 Sat 8am to 305pm **Jan 11 to Apr 26** Valle Verde 30B

### Intensive English II-B. / \$ 277

Course **IEP 122.**

26326 Sat 8am to 305pm **Jan 11 to Apr 26** Valle Verde 18

### Intensive English III-A. / \$ 277

Course **IEP 131.** Equivalent to WECM course COMG 1000. ....

26327 Sat 8am to 305pm **Jan 11 to Apr 26** Valle Verde 31B

### Intensive English III-B. / \$ 277

Course **IEP 132.** Equivalent to WECM course COMG 1001. ....

26328 Sat 8am to 305pm **Jan 11 to Apr 26** Valle Verde 20

### Intensive English IV-A. / \$ 277

Course **IEP 141.** Equivalent to WECM course COMG 1004.

26329 Sat 8am to 305pm **Jan 11 to Apr 26** Valle Verde 19

### Intensive English V-B. / \$ 277

Course **IEP 152.**

26330 Sat 8am to 305pm **Jan 11 to Apr 26** Valle Verde 22

### Intensive English VI-A. / \$ 277

Course **IEP 161.**

26331 Sat 8am to 305pm **Jan 11 to Apr 26** Valle Verde 24



**IEP Saturday. Classes in person.**  
/ 100 hrs / 10 CEUs / Cycle II

**Full payment** is required at time of registration. A registration referral form from the Language Institute is required to enroll.  
**El pago completo** es requerido al momento de la inscripción. Se requiere forma de inscripción del Language Institute para inscribirse.

**Cycle II : May 3 to August 9, 2025**

### Intensive English I-A. / \$ 277

Course **IEP 111.**

26336 Sat 8am to 305pm **May 3 to Aug 9** Valle Verde 14

### Intensive English I-B. / \$ 277

Course **IEP 112.**

26337 Sat 8am to 305pm **May 3 to Aug 9** Valle Verde 16

### Intensive English II-A. / \$ 277

Course **IEP 121.**

26338 Sat 8am to 305pm **May 3 to Aug 9** Valle Verde 17

### Intensive English II-B. / \$ 277

Course **IEP 121.**

26339 Sat 8am to 305pm **May 3 to Aug 9** Valle Verde 30B



### Intensive English II-B. / \$ 277

Course **IEP 122.**

26340	Sat 8am to 305pm	<b>May 3 to Aug 9</b>	Valle Verde 18
26341	Sat 8am to 305pm	<b>May 3 to Aug 9</b>	Valle Verde 30A

### Intensive English III-A. / \$ 277

Course **IEP 131.** Equivalent to WECM course COMG 1000. ....

26342	Sat 8am to 305pm	<b>May 3 to Aug 9</b>	Valle Verde 19
-------	------------------	-----------------------	----------------

### Intensive English III-B. / \$ 277

Course **IEP 132.** Equivalent to WECM course COMG 1001. ....

26343	Sat 8am to 305pm	<b>May 3 to Aug 9</b>	Valle Verde 20
-------	------------------	-----------------------	----------------

### Intensive English IV-A. / \$ 277

Course **IEP 141.** Equivalent to WECM course COMG 1004.

26344	Sat 8am to 305pm	<b>May 3 to Aug 9</b>	Valle Verde 21
-------	------------------	-----------------------	----------------

### Intensive English IV-B.

Course **IEP 142.** Equivalent to WECM course COMG 1004.

26345	Sat 8am to 305pm	<b>May 3 to Aug 9</b>	Valle Verde
-------	------------------	-----------------------	-------------

### Intensive English VI-A.

Course **IEP 161.**

26346	Sat 8am to 305pm	<b>May 3 to Aug 9</b>	Valle Verde 24
-------	------------------	-----------------------	----------------

### Intensive English VI-B.

Course **IEP 162.**

26347	Sat 8am to 305pm	<b>May 3 to Aug 9</b>	Valle Verde 29
-------	------------------	-----------------------	----------------

## Conversation ESL Program. Classes in person. / \$ 150 / 50 hrs / 5 CEUs / Cycle I

The 50-hour Conversation ESL course of study is designed to advance the oral English skills of students in the workplace. These classes aim to improve pronunciation and the use of idiomatic expressions, and emphasize communication and formal presentations.

**Full payment** is required at time of registration. A registration referral form from the Language Institute is required to enroll.  
( **El pago completo** es requerido al momento de la inscripción. Se requiere forma de inscripción del Language Institute para inscribirse. )

## Cycle I : January 25 to April 26, 2025

### Conversation ESL I. / \$ 150

Course **IEP 501.**

26348	Sat 9 to 1250pm	<b>Jan 25 to Apr 26</b>	Valle Verde 29
-------	-----------------	-------------------------	----------------

### Conversation ESL II. / \$ 150

Course **IEP 502.**

26349	Sat 9 to 1250pm	<b>Jan 25 to Apr 26</b>	Valle Verde A1123
-------	-----------------	-------------------------	-------------------

### Conversation ESL III. / \$ 150

Course **IEP 503.**

26350	Sat 9 to 1250pm	<b>Jan 25 to Apr 26</b>	Valle Verde A1122
-------	-----------------	-------------------------	-------------------

### Conversation ESL IV. / \$ 150

Course **IEP 504.**

26351	Sat 9 to 1250pm	<b>Jan 25 to Apr 26</b>	Valle Verde A1124
-------	-----------------	-------------------------	-------------------

### Conversation ESL V. / \$ 150

Course **IEP 505.**

26352	Sat 9 to 1250pm	<b>Jan 25 to Apr 26</b>	Valle Verde A1120
-------	-----------------	-------------------------	-------------------

### Conversation ESL VI. / \$ 150

Course **IEP 506.**

26353	Sat 9 to 1250pm	<b>Jan 25 to Apr 26</b>	Valle Verde A1131
-------	-----------------	-------------------------	-------------------

### Advanced Conversational ESL.

Online in synch. / \$ 150 / 36 hrs / 3.6 ceus

**Note :** Students must have completed level IEP 262 / 162.

Course **ALP 507.**

26354	Mon Wed 6 to 730pm	<b>Jan 21 to Apr 17</b>	Online
-------	--------------------	-------------------------	--------

### CE Language Programs.

Online in synch. / \$ 150 / 48 hrs / 4.8 ceus

Learn another language at the EPCC Language Institute. These affordable, non-credit Spanish, German, and French classes are offered under Continuing Education, and are concurrent with credit courses.

Beginning Verbal Skill in Career Spanish.

Course **ALP 051.** Equivalent to WECM course FRNL 1001.

26355	Sat 9 to 1150am	<b>Jan 21 to May 16</b>	Online
-------	-----------------	-------------------------	--------

Conversational German I.

Course **ALP 056.**

26356	Sat 9 to 1150am	<b>Jan 21 to May 16</b>	Online
-------	-----------------	-------------------------	--------

Conversational French I.

Course **ALP 057.**

26357	Sat 9 to 1150am	<b>Jan 21 to May 16</b>	Online
-------	-----------------	-------------------------	--------

# Center for Corporate and Workforce Training

**Jose CassoLopez**, Director. Email [ccwt@epcc.edu](mailto:ccwt@epcc.edu) or call 915 831-7825 or 7824 for more information on these courses.

## Corporate and Workforce Trainings

CCWT develops and delivers up-to-date and convenient innovative and accessible programs to meet the vocational and professional needs of individuals and businesses in the El Paso region. CCWT can customize curriculum that can be delivered on- or off-site to your employees, with flexible schedules.

### Customs Brokerage. / \$ 75 / 8 hrs / 0.8 CEUs

This course will provide logistics associates with an understanding of how to complete and ensure that import / export documentation for US and Mexico customs is accurate. Provides a foundation of knowledge including protocol, customs, etiquette, verbal and nonverbal communications.

Course **CWT 603**. Equivalent to WECM course IBUS 2001.

26519	Sat 8am to 12pm	<b>Jan 11 to Jan 18</b>	Admin Svc Ctr B480
26520	Sat 8am to 12pm	<b>Mar 1 to Mar 8</b>	Admin Svc Ctr B480

### Corporate Communication. / \$ 200 / 24 hrs / 2.4 CEUs

This course will focus on three aspects of corporate communication: grammar, professional writing, and presentations.

Course **CWT 402**. Equivalent to WECM course POFT 1012.

26521	Mon Wed 530 to 830pm	<b>Jan 22 to Feb 17</b>	Admin Svc Ctr B555
26522	Sat 9am to 1pm	<b>Jan 25 to Mar 1</b>	Admin Svc Ctr B555

**Note.** If not enough students register for a class, it will be canceled. You will be reimbursed within a two week period.

## Institute for Customer Service Excellence Southwest Region

The Institute will provide participants the opportunity to test for the Retail Industry Fundamentals Specialist, Customer Service and Sales Certified Specialist, and Business of Retail Certified Specialist through the National Retail Federation Foundation RiseUP.

The Institute can also customize customer service workshops tailored to meet business and industry needs. The following courses are provided by the Institute :

### Introduction to Customer Service.

/ \$ 200 / 24 hrs / 2.4 CEUs

This course is designed to provide an introduction to the process of providing excellent customer service. The course will prepare the students to provide excellent customer service in the areas of employment they enter including but not limited to the retail industry. It includes the recognition of the customer base and identification and fulfillment of customer needs.

Course **CWT 400**. Equivalent to WECM course BUSG 1005.

26523	Tue Thu 530 to 830pm	<b>Jan 14 to Feb 6</b>	Admin Svc Ctr
26524	Sat 9am to 1pm	<b>Jan 18 to Feb 22</b>	Admin Svc Ctr B556

### Enhancing Your Customer Service Skills.

/ \$ 75 / 8 hrs / 0.8 CEUs

This course presents the foundation required for developing skills and knowledge to work effectively with internal and external customers. It is designed to help customer service staff to be the best they possibly can be for their organization. At the conclusion, participants will have an understanding of what makes an excellent customer service experience, how to deliver excellent customer service over the telephone, and how to deal with a difficult customer. This course can be customized to business and/industry needs.

Course **CWT 401**. Equivalent to WECM course BUSG 1005.

26525	Mon Wed 530 to 730pm	<b>Feb 10 to Feb 19</b>	Admin Svc Ctr B556
26526	Sat 9am to 1pm	<b>Mar 1 to Mar 8</b>	Admin Svc Ctr B556

## Automotive Technology

### Auto Mechanics / Non-Mechanics.

/ \$ 170 / 20 hrs / 2.0 CEUs

Learn basic automotive technical skills. These skills will assist you in perform identifying mechanical problems, making minor repairs, and preventive maintenance such as changing oil and transmission filters.

**No class** on March 15.

Course **CWT 101**. Equivalent to WECM course AUMT 1091.

26527	Sat 1 to 5pm	<b>Feb 15 to Mar 22</b>	Valle Verde TTC159
-------	--------------	-------------------------	--------------------

### Fundamentals of Brake Systems.

/ \$ 170 / 20 hrs / 2.0 CEUs

This course introduces the basics of brake systems to includes topics on the diagnosis, anti-lock brake systems, and parking brakes. These concepts are taught through a series of class discussions and hands-on applications.

Course **CWT 102**. Equivalent to WECM course DEMR 1015.

26528	Sat 1 to 5pm	<b>Jan 11 to Feb 8</b>	Valle Verde TTC559
-------	--------------	------------------------	--------------------

### Motorcycle Repair. / \$ 135 / 20 hrs / 2.0 CEUs

Participants will learn how to properly service, repair and maintain motorcycles. This study of the components will include shocks, tires, wheels, drive chains, cables, clutches, valve adjustments, timing chain service, fuel systems service, and ignition system testing. Emphasis will be placed on the individual projects. Students are responsible for purchasing any required parts for their motorcycle. If you have any questions, please call 915 831-7756.

**No class** on Apr 19.

Course **CWT 100**. Equivalent to WECM course MRTC 1091.

26529	Sat 1 to 5pm	<b>Apr 5 to May 10</b>	Valle Verde TTC159
-------	--------------	------------------------	--------------------

**Note.** If not enough students register for a class, it will be canceled. You will be reimbursed within a two week period.

## Auto Collision and Repair

The Auto Collision and Repair Program will prepare you with the basic technical knowledge and skills for the auto collision and repair industry. You will receive hands-on training from instructors credentialed by I-CAR.

### Shop Safety and Procedures. / \$ 175 / 20 hrs / 2.0 CEUs

Participants will learn the basic knowledge of shop safety, shop tools, test equipment, and service tools. Instruction will occur in both a classroom and a field-laboratory setting.

Course **CWT 112**. Equivalent to WECM course DEMR 1000.

26530	Mon to Thu 530 to 930pm	<b>Jan 27 to Feb 3</b>	Valle Verde TTC159
-------	-------------------------	------------------------	--------------------

### Basic Metal Repair.

/ \$ 263 / 30 hrs / 3.0 CEUs

This course is an introduction of basic current metal work techniques, product application, and skill development utilizing various auto body features including metal principles. The student will perform basic metal straightening procedures, utilize basic body-shop hand tools, and utilize appropriate plastic filler application techniques. **No class** on Mar 15.

Course **CWT 113**. Equivalent to WECM course ABDR 1091.

26531 Mon to Thu 530 to 930pm **Feb 4 to Feb 17** Valle Verde TTC159

26532 Sat 8am to noon **Feb 1 to Mar 29** Valle Verde TTC159

### Basic Refinishing.

/ \$ 263 / 30 hrs / 3.0 CEUs

This course is an introduction to current refinishing products, shop safety, and equipment used in the automotive refinishing industry. Emphasis on surface preparation, masking techniques, and refinishing of replacement parts. **No class** on Apr 19.

Course **CWT 114**. Equivalent to WECM course ABDR 1091.

26533 Mon to Thu 530 to 930pm **Feb 18 to Mar 3** Valle Verde TTC159

26534 Sat 8am to noon **Apr 5 to May 31** Valle Verde TTC159

### Vehicle Trim and Hardware.

/ \$ 175 / 20 hrs / 2.0 CEUs

This course will instructs the student in proper use and selection of tools, removing and installing interior door trim panels, and removing and installing door locks and handles. How to properly remove and install deck lid lock cylinders, install pinstripes, decals, and remove and install exterior trim.

Course **CWT 115**.

26535 Mon to Thu 530 to 930pm **Mar 17 to Mar 24** Valle Verde TTC 59

### Auto Body Repair and Repainting.

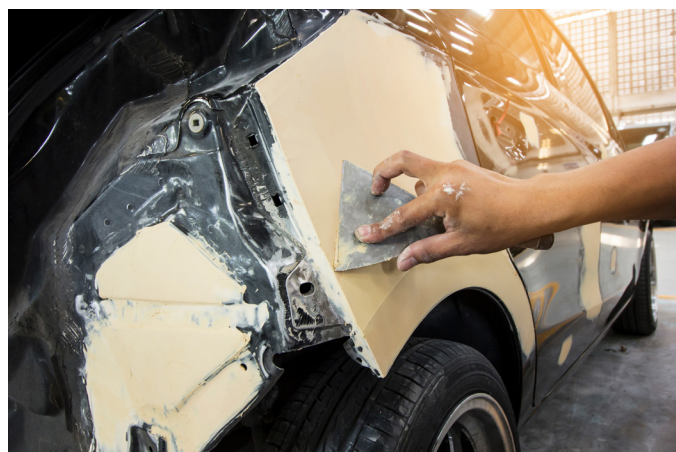
/ \$ 175 / 20 hrs / 2.0 CEUs

This course introduces the use of hand and power tools, metalworking techniques, body preparation, plastic fillers, fiberglass, SMC repair, sanding, and application of primers, emphasizing shop safety practices.

**No class** on Mar 31.

Course **CWT 116**.

26536 Mon to Thu 530 to 930pm **Mar 25 to Apr 2** Valle Verde TTC159



### Vehicle Design and Structural Analysis.

/ \$ 175 / 20 hrs / 2.0 CEUs

This course is an introduction to the collision repair industry, and emphasizes safety, professionalism, and vehicle structural design. It explains the methods to determine collision damages to an automotive chassis and suspension components for conventional framed and unitized vehicles.

Course **CWT 117**.

26537 Mon to Thu 530 to 930pm **Apr 3 to Apr 10** Valle Verde TTC159

### Automotive Plastic and Sheet Molding Compound Repair.

/ \$ 175 / 20 hrs / 2.0 CEUs

This is a comprehensive course in the repair of interior and exterior plastics, including various types of plastic welding and adhesives. Instruction will occur in a classroom and field-laboratory setting.

Course **CWT 118**.

26538 Mon to Thu 530 to 930pm **Apr 14 to Apr 21** Valle Verde TTC159

**Note.** If not enough students register for a class, it will be canceled. You will be reimbursed within a two week period.

## Electrical Technology

**Conc** indicates a concurrent course open to both degree-plan and CE students. It is limited to age 17 or older. See page 53.

### Introduction to Electrical Safety and Tools.

/ \$ 459 / 64 hrs / 6.4 CEUs

Provides a comprehensive overview of safety rules and regulations. Includes the selection, inspection, use, and maintenance of common tools for electricians.

Course **CCW 301**. Equivalent to WECM course ELPT 1321.

Conc 26539 Tue Thu 8 to 1050am **Jan 21 to Mar 20** ATC216  
( Lab Tue Thu 11 to 1150am )

Conc 26540 Tue Thu 6 to 850pm **Jan 21 to Mar 20** ATC216  
( Lab Tue Thu 9 to 950pm )

### Fundamentals of Electricity I.

/ \$ 683 / 96 hrs / 9.6 CEUs

An introduction to basic DC direct current theory, including electron theory and direct current applications. Includes electrical energy with emphasis on industrial and commercial systems, AC and DC theory, electrical generation transmission, distribution and switching, and single-phase and three-phase motor principles.

Course **CCW 302**. Equivalent to WECM course ELPT 1419.

Conc 26541 Mon 8 to 1150am **Jan 22 to Mar 21** ATC219  
( Lab Wed Fri 8 to 1150am )

Conc 26542 Mon 6 to 950pm **Jan 22 to Mar 21** ATC219  
( Lab Wed Fri 6 to 950am )

### Facility Operation and Maintenance I.

/ \$ 683 / 96 hrs / 9.6 CEUs

Provides the management of the interaction among facility, people, equipment, air conditioning, furniture, grounds, and waste management.

Course **CCW 308**. Equivalent to WECM course ENTC 2414.

Conc 26543 Mon Wed Fri 8 to 950am **Mar 24 to May 16** ATC216  
( Lab Mon Wed Fri 10 to 1150am )

Conc 26544 Mon Wed Fri 6 to 750pm **Mar 24 to May 16** ATC216  
( Lab Mon Wed Fri 8 to 950am )



## Introduction to Electrical Blueprint Reading.

/ \$ 459 / 64hrs / 6.4 CEUs

An introduction to reading and interpreting working drawings for manufactured products and associated tolling; use sketching techniques to create pictorial and multiple-view drawings. A course in the control of electrical energy in industrials and commercial systems. Topics include electrical symbols, ladder diagrams, relay logic, programmable controllers, and electronic controls.

Course **CW 304**. Equivalent to WECM course ELPT 1370.

Conc 26545	Tue 8 to 1150am ( Lab Thu 8 to 1150am )	<b>Mar 25 to May 15</b>	ATC 216
------------	--	-------------------------	---------

Conc 26546	Tue 6 to 950pm ( Lab Thu 6 to 950pm )	<b>Mar 25 to May 15</b>	ATC 216
------------	--	-------------------------	---------

## Construction Technology

### Blueprint Reading for Construction.

/ \$ 263 / 30 hrs / 3.0 CEUs

Provides you with the tools and methodology for interpretation of blueprints in the building-construction industry. Course covers reading, interpretation, and application of symbols, graphic language, and terminology used in the construction industry by building trades. **No class** on Jan 20.

Course **CWT 501**.

26547	Mon Wed 6 to 9pm	<b>Jan 13 to Feb 17</b>	Admin Svc Ctr B585
-------	------------------	-------------------------	--------------------

### Construction Cost Estimating.

/ \$ 263 / 30 hrs / 3.0 CEUs

This introductory course presents an overview for cost estimating of building construction, reviews pre-bid procedures, material surveys, pricing, and bid closeout. **No class** on Mar 10, 12, and 31.

Course **CWT 502**.

26548	Mon Wed 6 to 9pm	<b>Feb 24 to Apr 7</b>	Admin Svc Ctr B480
-------	------------------	------------------------	--------------------

### Introduction to Home Electrical.

/ \$ 155 / 10 hrs / 1.0 CEUs

This course provides a foundational understanding of residential electrical systems. It covers essential topics such as safety, basic electrical theory, common home wiring, troubleshooting, and repairs. The course is designed for homeowners and aspiring electricians who wish to gain practical knowledge and skills. **No class** on Apr 19.

Course **CWT 313**. Equivalent to WECM course ELPT 1002.

26549	Sat 10am to 12pm	<b>Mar 22 to Apr 26</b>	Valle Verde ATC
-------	------------------	-------------------------	-----------------

## Welding Technology

**Welding Art.** / \$ 282 / 28 hrs / 2.8 CEUs

Learn the fundamentals of producing utilitarian and ornamental items using various metals. Use welding techniques to create metal pieces with sheet or stock materials, employing various welding and cutting processes. **Pay for your own art materials.**

Course **CWT 200**.

26550	Sat 1 to 5pm	<b>Jan 11 to Feb 22</b>	ATC121
-------	--------------	-------------------------	--------

## Logistics

New / **CLT : Certified Logistics Technician.**

/ \$ 1,161 / 80 hrs / 8.0 CEUs / Hybrid

The purpose of the CLT® Certified Logistics Technician certification program is to recognize, through certification, individuals who demonstrate mastery of the core competencies of material handling at the front-line (entry-level to front-line supervisor) through successful completion of the certification assessments. The goal of the CLT certification program is to raise the level of performance of logistics technicians both to assist individuals in finding higher-wage jobs and to help employers ensure their workforce increases the company's productivity and competitiveness.

Course **CWT 710**.

26551	Mon to Thu 530 to 830pm	<b>Jan 13 to Feb 26</b>	Online
-------	-------------------------	-------------------------	--------

**EPCC is designated** as a military-friendly MSSC-Authorized Assessment Center and may administer the following MSSC assessments: CPT® Certified Production Technician assessment consisting of five modules:

- 1 Safety;
- 2 Quality Practices and Measurement;
- 3 Manufacturing Processes and Production;
- 4 Maintenance Awareness; and
- 5 Green Production -- a voluntary module.

In addition, MSSC maintains the Foundational-level CLA® Certified Logistics Associate, the Mid-level CLT® Certified Logistics Technician, and the CFT® Certified Forklift Technician assessments.

Contact Jose CassoLopez at 915 **831-7756** or [jcassolo@epcc.edu](mailto:jcassolo@epcc.edu) for more information.

# JER Online

## Workforce Certificates & Courses

### CENTER FOR CORPORATE AND WORKFORCE TRAINING

The Center for Corporate and Workforce Training (CCWT) is happy to announce our new partnership with JER Online which provides 100% online and instructor-led certificate courses. Some are certificate courses. Please see list below:

- Industrial Foundation Training Series
- Distribution and Warehousing Training Series
- Certificate in Logistics, Supply Chain, and Purchasing Management
- Lean Manufacturing Personal Training Library
- Manufacturing Statistics Personal Training Library
- Lean Six Sigma Black Belt Course Library
- Lean Six Sigma Green Belt Course Library, Manufacturing Version
- Lean Six Sigma Green Belt Course Library, Transactional Version
- Lean Six Sigma Yellow Belt Course Library, Manufacturing Version
- Electrical Foundations Training Series
- Industrial Electricity and Electronics Training Series
- Customer Service Learning Bundle
- Principles of Home Inspection: System & Standards, 100 Professional
- Introduction Coronaviruses, COVID-19, and Emerging Respiratory Viruses (**Free Course**)

For more information, please click the following link [coursecatalog.com/epcc](https://coursecatalog.com/epcc) to provide you with a more

extensive list of offerings.



In addition to the courses above, JER Online provides the *TechWriter-Certifications*. Technical Communication is a demand occupation that has tremendous potential in any area. As a "**Demand Occupation**" this means more training opportunities are needed to meet business and industry customer requirements. Technical Communicators are everywhere looking for high quality, Certificate-Based Training, and jobs. Some of the available courses are listed below:

- Basic Certificate in Technical Writing
- Certificate in Technical Writing for Current Technical Writers
- Technical Writing & Communication Industry Certificate - Mastery Level
- Advanced Certificate Course in Structured Writing for Technical Documentation
- Certificate in Professional Technical Communication (Portfolio)
- Writers at Work Technical Certificate Program
- Certificate Course in Writing for a Global Market
- Technical Communication Techniques & Principles for Project Managers
- Workplace Experience Certificate (Not a course: Prior Learning Assessment Service)
- Comprehensive Career Builder Certificate in Technical Writing
- Certificate Course in Technical Business Writing for Engineers

For more information, please click the link below [techwriter.coursecatalog.com/epcc](https://techwriter.coursecatalog.com/epcc)

# CONTRACT OPPORTUNITIES CENTER APEX ACCELERATOR

In 1986, the US Department of Defense, through the Defense Logistics Agency (DLA), awarded a Cooperative Agreement to El Paso Community College to operate the Contract Opportunities Center Apex Accelerator (COC).

In October 2022, the program transferred from DLA to the Office of Small Business Programs (OSBP) with the new mission to serve as the axis for existing and new businesses to strengthen the defense industrial base by accelerating innovation, fostering ingenuity, and establishing resilient and diverse supply chains.

Small businesses have been an integral part of America's economic growth and development. Thus, to ensure continued growth, we must focus on this uniquely American phenomenon and maintain a productive and educated workforce that contributes to the overall success of all businesses.

The COC provides specialized and professional assistance to businesses in the El Paso area who seek to learn how to compete for contracting and subcontracting opportunities with DOD, other federal agencies, state and local governments, educational institutions, and prime contractors to promote business development.

The COC is committed to assisting and motivating businesses - with emphasis on small, disadvantaged, minority, women-owned, veteran-owned, and HUBZone certified - toward market expansion and job creation through active pursuit of government contracting.

## Services Provided Include:

**Technical Support:** Includes bid preparation assistance, pre-award technical assistance and post-award assistance.

**Counseling Support:** Includes client needs assessment, new client program orientation, guidance and assistance with SAM and DSBS registration, bid analysis, proposal preparation and submission, use of electronic data information.

**Outreach Support:** Includes conferences, networking, seminars/workshops, on-site visits and technical training.

**Bid Matching Support:** Customized bid matching services. Annual fee \$50.

**Marketing Support:** Includes research, strategies in accessing federal, state and municipal markets and various electronic registrations.

**Reference Support:** Includes Federal Acquisition Regulations, Texas State Procurement Information, Municipal purchasing Systems, Procurement Automated Source Systems, Reference Library and Government and Military Specifications.

**Training & Resources:** Information and training seminars and workshops are offered throughout the year which assist businesses to increase their knowledge and enhance their skills in business management, operations, and specialized areas related to purchasing, procurement and contracting. Counseling and technical assistance is provided free of charge. Seminars and workshops will occasionally require a registration fee.



9050 Viscount Blvd. Bldg. B. Room B545  
El Paso, Texas 79925  
(915) 831-7745  
[www.elpasococ-events.org](http://www.elpasococ-events.org)





# RISK MANAGEMENT INSTITUTE

*Get Trained in Safety Today!*



Susan Harwood  
Training Grant Program



The Institute makes the training not only effective but also highly convenient by designing customized training based on the employer's specific needs for locations, schedules, languages, and topics.

These courses range from courses, such as **OSHA 10 or 30 Hour for Construction or General Industry**, to specific topics such as:

- OSHA Record-keeping
  - Accident Investigation Procedures
  - Back Injury Prevention
  - Blood-borne Pathogens Training
  - Confined Spaces
  - Electrocution Hazard Recognition
  - Fall Prevention
  - Forklift Safety Training
  - Hazardous Materials
  - LOTO (Lockout Tagout Procedures)
  - Machine Guarding
  - Personal Protective Equipment (PPE)
  - Trenching and Excavation
  - Struck by or Caught in Between
- And many more!

## Workplace Safety Training Courses on the Topics You Need.

For more information, please visit our website at:  
[epcc.edu/Academics/ContinuingEducation/  
RiskManagementInstitute](http://epcc.edu/Academics/ContinuingEducation/RiskManagementInstitute)



or contact Cecy Maurer at (915) 831-7130

**REGISTER TODAY!  
SEATS ARE LIMITED.**

Courses are one to 30 hours in duration and are offered in English or Spanish. Continuing Education Units (CEUs) and certificates will be awarded upon successful completion of each course.



# ESL BRIDGE

We are the **bridge to ESOL**  
for ESL learners transitioning into academic courses.



## English GED – Preparation courses

In person classes or Online. Tuition under \$40. Call to Register!!

### Benefits:

- Small class size (18 students/class)
- Online and in-person classes
- Simple Registration process
- College-level experience
- Low cost tuition

### We assist with:

- College Readiness
- Reading
- Grammar
- Writing
- Math

Center for College Access and Development  
Valle Verde Campus • 919 Hunter Dr., Bldg. B, B264 • El Paso, TX 79915  
915.831.3319 • ccad@epcc.edu



# HIGH SCHOOL EQUIVALENCY TESTING CENTER

9050 Viscount Blvd. ~ Bldg. B, Rm. 156 ~ El Paso, Texas 79925

Ph. 915-831-7818 ~ Fax 915-831-7819

[www.epcc.edu/testingservices](http://www.epcc.edu/testingservices)

Monday—Friday 8:00 am-5:00pm

Assistance with registration | Flexible testing dates and times | Safe and secure testing environment | Certificate printed on parchment paper | College and career information



877-392-6433

## FOUR CONTENT AREAS

- Reasoning Through Language Arts
- Mathematical Reasoning
- Science
- Social Studies

## TESTING FEES

\$145 Battery

\$36.25 Individual Test

\$16.25 Retests\*

\* After the first 3 attempts, 60 day wait period required between retakes

**PASSING SCORE:** 145-200 on each test. Scores are available within 3 hours of testing.

**GED<sup>®</sup> College:** Applicants who score **165-174** can qualify for waivers from applicable placement testing.

**GED<sup>®</sup> College + Credit:** Applicants who score **175-200** have demonstrated skills that could qualify them for college credit.

TEA will email your State of Texas Certificate Of High School Equivalency to the email address used to register for the exams three business days after the final test.

**Computer-based tests are offered in English and Spanish**

## ELIGIBILITY REQUIREMENTS

Applicants must **provide valid proof of identity and Texas residency** before being permitted to take any of the tests. Identification must be issued by a government entity and contain the following: applicant's name, date of birth, a recent photograph, signature and Texas address.

**Examples of Acceptable Identification:** Texas Driver's License, Texas Department of Public Safety ID, US Military ID, Mexican Consulate ID, Passports\* (national or foreign), Out-of-State Driver's License\*

**\*Texas Residency:** Texas voter registration card, lease agreement, utility bill, property tax receipt, or federal income tax return. Documents must be current and show the applicant's name and Texas address.

## AGE REQUIREMENTS

Testing is available for Texas residents 18 and older; 16 and 17 year olds must submit additional documentation to the Testing Center or the Texas Education Agency (TEA) electronically. Upon verification of all required forms, TEA will notify testing applicant when they can continue with the registration process and schedule their exams.

## TEST ACCOMMODATIONS

Special test accommodations are available for applicants with disabilities. Applicants must submit necessary forms, and be approved before they can test with accommodations.

*The El Paso County Community College District does not discriminate on the basis of race, color, national origin, religion, gender, age, disability, veteran status, sexual orientation, or gender identity.*

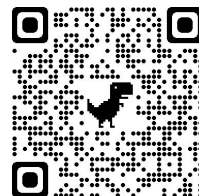




**El Paso Community College is an official  
Pearson Vue Testing Center  
Information Technology (IT) and  
Professional Licensure Certification Exams**

- \*America College of Sports Medicine (ACSM)
- \*Board of Certified Safety Professionals (BCSP)
- \*C+ Institute
- \*Cisco systems
- \*Commission on Dietetic Registration (CDR)
- \*CompTia
- \*Microsoft
- \*National Strength and Conditioning Association (NSCA)
- \*Pharmacy Technician Certification Board Texas Texas (PTCB)
- \*Texas Educator Certification
- \*Texas Real Estate
- \*Texas Insurance
- \*U.S. Secret Service
- \*And Many More...

**Register at  
[www.pearsonvue.com](http://www.pearsonvue.com)**



The El Paso County Community College District does not discriminate on the basis of race, color, national origin, religion, gender, age, disability, veteran status, sexual orientation, or gender identity.



# Workforce Strategic Initiatives

For information about any program, please call (915) 831-7840



The Texas Workforce Commission has funding available for businesses and employers with apprenticeship programs. The funds help pay for classroom training. Partner with El Paso Community College for a great opportunity to access those funds.

Call us or visit <https://www.twc.state.tx.us/programs/apprenticeship>

---

## EMPLOYERS: Increase productivity and quality

Customized training through state-funded SDF grants ensures your workforce receives training to upskill and gain proficiency in industry skill standards.



# SKILLS

Development Fund

Call us or visit <https://www.twc.texas.gov/partners/skills-development-fund>



# SKILLS

For Small Business

Businesses with fewer than 100 employees can register full-time employees at El Paso Community College. Skills for Small Business Program pays tuition and fees up to \$900 for each existing employee and up to \$1,800 for each new employee per 12-month period.

Call us or visit <https://www.twc.texas.gov/programs/skills-small-business>

# General Information

Call 915 **831-7721** for general information or questions.

## Registration and payment

Current EPCC students can

- 1 **register online** for most courses. Go to [epcc.edu/admissions/registration](http://epcc.edu/admissions/registration) to plan, register, and pay for your classes,
- 2 **email the registration form** on page 57 to [admissions@epcc.edu](mailto:admissions@epcc.edu), or
- 3 **register in person** at any campus. ( It's best to keep your records current by filling out a form for each class. )

New students, or those without a username or id, should

- 1 **fill out the form** on page 54, or
- 2 **email the registration form** on page 57 to [admissions@epcc.edu](mailto:admissions@epcc.edu)

**You must pay in full when you register.** ( It's best to register and pay two weeks before classes start. ) You can pay with cash, check, money order, debit card, and the credit cards Visa, Mastercard, American Express, and Discover. **Do not send cash** through the mail. Make checks or money orders payable to EPCC.

Go to [epcc.edu/academics/continuingeducation](http://epcc.edu/academics/continuingeducation) for more general information about registration, or call 915 **831-7721**.

## Refunds

Under EPCC's refund policy, you'll get

- 1 **a 100 percent refund** if your class is canceled.
- 2 **a 100 percent refund** if you formally drop before the **first** class
- 3 **an 80 percent refund** if you formally drop before the **third** class
- 4 **No refund** if you formally drop **after the third class**

**We mail refund checks to the address we have on file.**  
Make sure it's your current address.

## Dropping a course

To drop, fill out the student add-drop form on page 55. Before classes start, take it to any campus admissions-registrars office, or the appropriate CE director's office. ( See a list of directors on page 53 ). No refunds will be given after the third day of classes.

## Parking on campus

If you're enrolled in Workforce and Continuing Education courses for less than 60 hours, you can get a free temporary parking pass. ( Take your Registration Statement to any EPCC vehicle registration office. )

If you're enrolled in 61 hours of courses or more, you must register your vehicle and buy a parking decal. Go to [epcc.edu/services/police/vehicle-registration](http://epcc.edu/services/police/vehicle-registration) for more information about parking on campus -- or call 915 **831-2867** or **2212**.

## Senior Adult Program

El Paso Community College offers seniors 55 years and older a variety of free classes in its Senior Adult Program. Check the Senior Adult Program area of this catalog for dates and locations of our free classes.

Prove you're old enough to take classes by showing your driver's license, birth certificate, or any legal document bearing your age.

**Note.** EPCC parking policies apply to all students on every campus.

**Note.** You must purchase any needed books or supplies.

**Note.** Seniors who register for courses outside the Senior Adult Program must pay all tuition and fees that apply to the course.

## Bacterial meningitis vaccine requirement

If you're under 22 and in a non-credit course or program with more than 360 contact hours, you must have a vaccination for meningitis 10 days before classes begin. Proof of immunization must be presented when registering for the course or program.

## Financial assistance

Tuition assistance may be available for students enrolled in continuing education career training certificate programs through the Texas Public Education Grant (TPEG). To apply, you must complete the Free Application for Federal Student Aid (Fafsa) at [epcc.edu/admissions/financialaid](http://epcc.edu/admissions/financialaid) and contact the Director for the program to complete a TPEG application. It is recommended that you submit the Fafsa and TPEG applications eight weeks before registering for classes. Call 915 **831-7721** for assistance.

## Records, directory information, and Ferpa, the Family Educational Rights and Privacy Act of 1974

To comply with the Family Educational Rights and Privacy Act, El Paso County Community College District gives notice that the following types of directory information will be released to the general public without the written consent of the student :

- 1 Student's name
- 2 Student's address
- 3 Telephone listing
- 4 Dates of attendance
- 5 Major field of study, and awards and degrees received
- 6 Most recent previous institution attended
- 7 Date of birth

Currently-enrolled students may request that all or part of their directory information be withheld from the public by filing a written request at the Admissions and Registration Office. Such a request will remain in effect until the student authorizes its removal in writing. Release of any additional information pertaining to student records must be authorized, in writing, by the student, except as authorized under the law. Students have a right to inspect, review, request copies of, and challenge the contents of their educational records. A fee will be charged for copies provided.

## Frequently asked questions

### How and where do I register for a course ?

Registrations are processed on a first-come, first-served basis. You can register in person at any campus, or online with an admissions assistant at [epcc.edu/admissions?virtual=true](http://epcc.edu/admissions?virtual=true).

You'll need a filled-out Continuing Education registration form. Find one on the web at [epcc.edu/academics/continuingeducation](http://epcc.edu/academics/continuingeducation) -- or at the back of this catalog.

You may also email the form to [admissions@epcc.edu](mailto:admissions@epcc.edu). Online registration is available for returning students for some courses. For more information, call 915 **831-7721**, or call Admissions at 915 **831-2150**.

### Are there any entrance requirements ?

The minimum age for adult continuing education courses is 17 years of age unless otherwise noted. Further information about ages and other prerequisites can be found in the individual course listing, or with the Continuing Education Director. It is your responsibility to ensure that all course requirements and prerequisites are met. You won't be allowed to remain in a course if its prerequisites and requirements are not satisfied.

### What if my class is canceled ?

In the event of a cancellation or change in schedule, we'll contact each student at their phone numbers on file. Whenever possible, the decision to cancel a course will take place 48 hours before it starts. Students get a full 100 percent refund for canceled classes. Students can also ask for a transfer to another section.

### What is a concurrent course ?

Concurrent courses are credit courses open to both degree-seeking and CE students. Degree-plan students earn college credit, while CE students earn continuing-education units. These units can later be turned into college credit under certain conditions. ( In class listings, **Conc** before a section number means that section is concurrent. ) For more, call 915 **831-7721**.

## Continuing Education transcripts and Certificates of Completion

Transcripts may be requested at any EPCC campus or by US mail. For more information, call 915 **831-2282**. Certificates of Completion should be requested through the division office from which they were issued. There may be a fee for issuing duplicate certificates.

## EPCC In-Person Registration Locations

Go to [epcc.edu/contact/maps](http://epcc.edu/contact/maps) for maps of these campuses.

**Valle Verde** campus / Monday to Friday 8am to 5pm  
915 **831-2150** / 919 Hunter Dr, Enrollment Services Center, **Bldg E**

**Rio Grande** campus / Monday to Friday 8am to 5pm  
915 **831-4035** / 103 Montana, Student Services Ctr, Room **D101**

**Transmountain** campus / Monday to Friday 8am to 5pm  
915 **831-5030** / **9470** Gateway North, Room **1051**

**Mission Del Paso** campus / Monday to Friday 8am to 5pm  
915 **831-7017** / 10700 Gateway East, Room **A123**

**Northwest** campus / Monday to Friday 8am to 5pm  
915 **831-8830** / 6701 South Desert Rd, Main Bldg, Room **M73**

## EPCC Central Offices

**Administrative Services Center** ASC  
915 **831-3722** / 9050 Viscount Blvd 79925





# AVP Workforce & Continuing Education



## Office

**Blayne Primozich, Associate Vice-President**

*Workforce and Continuing Education*

- Jessica Diaz, Senior Administrative Associate
- Terry Delgado, Administrative Associate

831-7724

831-7795

831-7721

**Daniel Guerra, Dean VV**

*Language Institute*

- Lucina (Lucy) Flores, Manager Language Institute

831-2857

831-2154

**Susana Rodarte, Dean VV**

*Center for College Access and Development*

- Maria del Carmen Casavantes, Manager Workplace Literacy

831-2868

831-3310

**Blayne Primozich, Associate Vice-President- ASC B**

*Workforce Strategies Initiatives*

- Carol Attel, Senior Administrative Associate

831-7784

831-7727

**Pablo Armendariz, Director - ASC B**

*Contract Opportunities Center*

- Alicia Salcedo, Administrative Associate

831-7747

831-7751

**Barry Bogle, Director - MDP**

*Law Enforcement Training Academy*

- Maria Jimenez, Administrative Associate

831-7116

831-7117

**Jose CassoLopez, Director - ASC B**

*Center for Corporate & Workforce Training*

- Nancy Reyes, Administrative Associate

*Risk Management Institute – ASC B*

- Gloria C. (Cecy) Maurer, Coordinator

831-7756

831-7824

831-7130

**Audrey A. Marrufo, Director - ASC B**

*Small Business Development Center*

- Alejandra Velazco, Administrative Associate

831-7733

831-7710

**Leticia Guerra, Director - ASC B**

*CE, Business & Tech. Education, Personal Enrichment and Children's College*

- Kenneth Brown, Administrative Associate

831-6695

831-6684

**Cheryl Stiles, Director - ASC B**

*CE Health -*

- Elva Santacruz, Administrative Associate

831-7808

831-7831

**Mary Yanez, Director - ASC B**

*Senior Adult Program*

- Nicole Gonzales, Administrative Associate

831-7803

831-7801



**El Paso Community College**  
**Continuing Education Registration Form**  
**Admissions@epcc.edu**  
**FAX: (915) 831-2161**

**STUDENT REGISTRATION FORM (Please print clearly/ Por favor imprima claramente)**

Keeping your information current with EPCC is important. This will help us contact you in case of cancelled classes, schedule changes, or any other reason. Student refunds will be sent to the address on file./Es importante mantener su información actualizada con EPCC. Esto nos ayuda a informarle si sus clases se han cancelado, si hay cambios en su horario de clases o por cualquier otro motivo. Re-embolsos se enviarán en dos semanas a la dirección proporcionada.

SSN or EPCC ID: \_\_\_\_\_ Date of Birth(Mo/Day/Year)/Fecha de Nacimiento(mes/día/año): \_\_\_\_/\_\_\_\_/\_\_\_\_

Legal Name/Nombre Legal: \_\_\_\_\_  
Last Name/Apellido First Name/Primer Nombre Middle Initial/Inicial De Segundo Nombre

Mailing Address/Domicilio: \_\_\_\_\_  
Street/Domicilio City/Ciudad State/Estado Zip Code/Código Postal

Phone/Telefono: \_\_\_\_\_  
Cell/Celular Work/De Trabajo Home/En Casa

Email/Correo Electrónico: \_\_\_\_\_ Gender/Sexo: ☐ (F) ☐ (M)

Emergency Contact Person/Persona Para Avisar En Caso De Emergencia: \_\_\_\_\_  
Name/Nombre Phone/Teléfono

For disability accommodations, please contact Center for Students with Disabilities at/Para asistencia por cuestión de discapacidad, por favor llame al Centro Para Estudiantes con Discapacidades **(915) 831-2426**.

Request EPCC to release your directory information?/Desea que EPCC comparta su información? Yes/Si ☐ No ☐

Ethnicity/Etnicidad(optional) ☐ White(Non Hispanic)/Blanco(No Hispano) ☐ Hispanic/Hispano  
☐ Asian/Pacific Islander/Asiático/Islands del Pacifico ☐ Black(Non Hispanic)/Afro-Americano (No Hispano)  
☐ American Indian/Alaskan Native/Indio Americano/Nativo De Alaska ☐ Other/Otra Nacionalidad

Are you a U.S. citizen? (Yes/Si) ☐ (No) ☐  
Es usted ciudadano americano?

Are you Permanent Resident? (Y/Si) ☐ (No) ☐  
Es usted residente permanente?

Student Signature/Firma del Estudiante: \_\_\_\_\_ Date/Fecha: \_\_\_\_\_

Example/Ejemplo:

CRN	Course Number/Clase Número	Course Title/Título Del Curso	Campus	Dates/Fechas	Days/Días	Time/Horario
27870	MGT 811	Introduction to Business Basics	VV	1/22/13-3/12/13	Tues	6pm-9pm

CRN	Course Number/Clase Número	Course Title/Título Del Curso	Campus	Dates/Fechas	Days/Días	Time/Horario

Registration must be received at least one week prior to the start of the class. Completed forms should be either emailed to: **Admissions@epcc.edu** or faxed to: **(915) 831-2161**. Please remember to sign the form.

La inscripción debe recibirse al menos una semana antes del comienzo de la clase. Los formularios completos deben enviarse por correo electrónico a: **Admissions@epcc.edu** o por fax a: **(915) 831-2161**. Recuerde firmar el formulario.

Once you have been registered for your classes you will receive an email with your student ID number and PIN, and confirming that you have been registered for continuing education classes. At that time you must pay for your classes online at the link included below. Classes will be dropped if payment has not been made within two business days of registration. If you have any questions regarding payment please call Tuitions/Cashiering Services at (915) 831-2107 or (915) 831-2569

Cuando se haya registrado para sus clases, recibirá un correo electrónico con su número de identificación de estudiante y PIN, y confirmará que se ha registrado para las clases de educación continua. En ese momento, debe pagar sus clases en línea en el enlace que se incluye a continuación. Las clases se cancelarán si el pago no se ha realizado dos días después de su inscripción. Si tiene alguna pregunta sobre el pago, llame a los servicios de matrícula/cajero al (915) 831-2107 o al (915) 831-2569.

[https://secure.touchnet.com/C20715\\_tsa/web/login.jsp](https://secure.touchnet.com/C20715_tsa/web/login.jsp)

Processed by: \_\_\_\_\_ Date: \_\_\_\_\_

El Paso County Community College District does not discriminate on the basis of race, color, national origin, religion, gender, age, disability, veteran status, sexual orientation, or gender identity./El distrito de El Paso Community College no discrimina a nadie por su raza, color de piel, origen nacional, religión, sexo, edad, incapacidad física, status military, orientación sexual o identidad sexual.



**EL PASO COMMUNITY COLLEGE**  
**Admissions and Registrar's Office**  
**Admission@epcc.edu**  
**Fax (915) 831-2161**  
**CONTINUING EDUCATION**  
**STUDENT ADD/DROP FORM**

Keeping your information **CURRENT** with EPCC is important. It helps us inform you if classes have been cancelled, if there are changes to your schedule, or if we need to contact you for any reason. Your information is kept confidential. If student is due any refunds EPCC will send to the address on file.

EPCC ID: \_\_\_\_\_ DATE OF BIRTH (Mo/Day/Year): \_\_\_\_/\_\_\_\_/\_\_\_\_\_  
 LAST NAME: \_\_\_\_\_ (FIRST NAME): \_\_\_\_\_ (Middle Initial): \_\_\_\_\_

STUDENT SIGNATURE: \_\_\_\_\_ DATE: \_\_\_\_\_

ADD	CIN (SECCION)	COURSE & NUMBER (CURSO Y NUMERO)	COURSE TITLE (TITULO DEL CURSO)	START/END DATE (COMENZO/FINAL DEL CURSO)

DROP	CIN (SECCION)	COURSE & NUMBER (CURSO Y NUMERO)	COURSE TITLE (TITULO DEL CURSO)	START/END DATE (COMENZO/FINAL DEL CURSO)

Processed by Admission and Registrar Staff: \_\_\_\_\_ Date: \_\_\_\_\_

El Paso County Community College District does not discriminate on the basis of race, color, national origin, religion, gender, age, disability, veteran status, sexual orientation, or gender identity.

Revised 02/04/2022



# Communication Improvement in the Workplace



Are you a second language learner that need to improve your English level to improve your communication at work?

**This course is for you!**

- ✓ 8-week courses
- ✓ Evening hours 5:30 – 7:00 PM
- ✓ 3 Times a week
- ✓ TUESDAYS – WEDNESDAYS – THURSDAYS (IN PERSON CLASSES)
- ✓ Tuition \$50

## Questions? Contact us!

Center for College Access and Development

Monday - Friday 8:00 a.m. to 5:00 p.m.

915- 831-3319 – 915-831-3321







The Best Place to Start *and Finish!*

# Language Institute

[www.epcc.edu/Academics/LanguageInstitute](http://www.epcc.edu/Academics/LanguageInstitute)

915-831-2154    [Li@epcc.edu](mailto:Li@epcc.edu)

Aprende  
Inglés

¿Te interesa algún programa o clase de este folleto y necesitas aprender inglés?

Te ofrecemos un programa interactivo para aprender inglés de inmersión total en un ambiente dinámico y multicultural. No dejes que la falta de conocimiento avanzado del idioma inglés paralice tus planes. Ofrecemos horarios flexibles. **No se requiere GED/preparatoria.**

Para más  
información, ve  
a la página 38.





# AUTO COLLISION AND REPAIR

## BASIC METAL REPAIR

This course is an introduction to basic current metal work techniques, product application, and skills development utilizing various auto body techniques. The student will perform basic metal straightening procedures, utilize basic body shop hand tools, and utilize appropriate plastic filler application techniques.



### Enroll Now!

#### Class Schedule:

2/4/25 - 2/17/25 Monday to Thursday 5:30-9:30 p.m.

2/1/25 - 3/29/25 Saturday 8:00 a.m. to 12:00 noon

Valle Verde Campus

Tuition \$263

Send your completed CE Registration form to: [ccwt@epcc.edu](mailto:ccwt@epcc.edu)

[https://www.epcc.edu/Admissions/Documents/CE\\_Registration\\_Form\\_English\\_and\\_Spanish.pdf](https://www.epcc.edu/Admissions/Documents/CE_Registration_Form_English_and_Spanish.pdf)

For more information, contact The Center for Corporate and Workforce Training at 915-831-7824 or 915-831-7796 or by email at [ccwt@epcc.edu](mailto:ccwt@epcc.edu)

The El Paso County Community College District does not discriminate on the basis of race, color, national origin, religion, gender, age, disability, veteran status, sexual orientation, or gender identity.



# FAMILY COLLEGE

*Bring your children with you when you take classes at EPCC*

**FREE CHILDREN'S COLLEGE CLASSES FOR CURRENT EPCC STUDENTS**



**ascend**  
aspen institute

*Funding made possible by the Ascend at the Aspen Institute – Postsecondary Leadership Circle Activation Fund*

## SPRING CHILDREN'S COLLEGE CLASSES OFFERED:

**Crime Scene Investigation**

**Martial Arts**

**Kinder Bots**

**Cooking**

**Spanish**

**Make Your First Video Game**

**Junior Engineers**

**YouTube Content Creation**

**Acrylic & Watercolor Painting**

**Minecraft Modders**

*For children ages 5 - 17. Ages will vary per class.*

**All classes are offered at the Valle Verde Campus**

*To register your children for these FREE classes, contact Sandra Ornelas at 915.831.3318 or [sornelas@epcc.edu](mailto:sornelas@epcc.edu)*



El Paso County Community College District does not discriminate on the basis of race, color, national origin, religion, gender, age, disability, veteran status, sexual orientation, or gender identity.