

Adobe CC Photoshop.
Create, edit, and retouch your photos.
/ Page 05

First Aid for Industry.
Standards for handling injuries on the job.
/ Page 10

ESL Grammar and Writing.
Targeted independent study.
/ Page 40

Flamenco.
Flexibility, footwork, body alignment, and color.
/ Page 25

Pharmacy Terminology.
Word prefixes, suffixes, and abbreviations.
/ Page 14

Kid Chefs in the Kitchen.
Easy and fun new recipes and favorites.
/ Page 32

Vehicle Trim.
Decals and pinstripes, door panels, proper tools.
/ Page 44

Fitness Kickboxing.
Cardio fitness and safety awareness.
/ Page 16

Customs Brokerage.
Import-export documents and protocols.
/ Page 43

Amigurumi Crochet.
Japanese 3-D stuffed plushies.
/ Page 33

Social Media for Seniors.
Facebook, Instagram, Twitter.
/ Page 34

Adv Cardiac Life Support.
ERs, critical care units, paramedics.
/ Page 11

CE Fall Classes 2025



**El Paso Community College Fall 2025
Workforce and Continuing Education Classes**
Register online for classes starting Aug 4 at
epcc.edu/academics/continuingeducation

EPCC Workforce and Continuing Education Schedule Fall 2025

The El Paso County Community College District Board of Trustees



Dr. William Serrata
College President



Mr. Brian Haggerty
Board Chair, District 2



Ms. Bonnie Soria Najera
Board Vice Chair, District 7



Dr. Carmen Olivas Graham
Board Secretary, District 5



Mr John E. Uxer, Jr.
Trustee, District 1



Mrs. Belen Robles
Trustee, District 3



Mr. Jesus Mendez
Trustee, District 4



Mrs. Diana Mooy
Trustee, District 6

Contents

04 / Business, Computers, Technical Education

Computer Business Applications
Computer Skills
Cisco Academy
Business Management / Technical Education
Real Estate
Professional Floral Design Certificate
Online Courses
New Career Training Programs Online

09 / Health and Fitness

CPR and First Aid
Ekg Technician
Emergency Medical Services
Emergency Medical Technician
General Health Courses
Health Ed2Go Courses
Medication Aide
Nursing Refresher
Nursing Assistant
Pharmacy Technician
Phlebotomy Technician
Journey to Wellness
Wellness Ed2Go Courses
Fitness
Massage Therapy
Continuing Education for Massage Therapists
Cosmetology Instructor Certificate
Nail Technician

19 / Law Enforcement

20 / Civilian Firearms Courses

22 / Motorcycle Rider Courses

23 / Personal Enrichment

Home and Garden
Creative Arts
Music
Culinary Arts
Online Courses
Exam Preparation
Personal Development
Young Adult Courses

Courses are subject to change.

Go to epcc.edu/academics/continuingeducation for up-to-date course information. Submit your CE Registration Form to our Admissions Department at admissions@epcc.edu for processing.

29 / Childrens College

Academic Enrichment
Black Rocket
Snapology
Arts
Sports and Fitness
Performing Arts
Young Rembrandts
Cooking
Children's and Teen ESL Program

32 / Senior Adult Program

Arts
Computers
Dance and Exercise
Languages
Music
Personal Enrichment
Wellness

40 / SBMI : Small Business Management Institute Session Descriptions

40 / Language Institute

43 / Center for Corporate and Workforce Training

Corporate and Workforce Trainings
Institute for Customer Service Excellence : Southwest Region
Automotive Technology
Auto Collision and Repair
Building Trades Academy
Electrical Technology
Construction Technology
Welding Technology
Logistics

49 / General Information

Registration and Payment
Refunds
Parking on Campus
Senior Adult Program
Bacterial Meningitis Vaccine Requirement
Financial Assistance
Frequently Asked Questions
CE Transcripts and Certificates of Completion
Locations
Key to Codes
Staff
How to Register
54 / Registration form
55 / Add-Drop form

Business / Computers / Technical Education

Leticia Guerra, Director.

Email mlerma14@epcc.edu or call 915 **831-6682**. Go to epcc.edu/academics/continuingeducation to learn about new course offerings.

You must have your login credentials on the first day of class, and you must be 17 years of age to register in these classes.

Computer Business Applications

These accelerated 4-hour courses provide refresher training for on-the-go professionals, but are not recommended for introductory training.

Introduction to Microsoft Excel. / \$ 45 / 4 hrs

Course **CAT 042**.

18918 Sat 9am to 1pm **Nov 1** Admin Svcs Ctr B-485

Power Point Basics. / \$ 45 / 4 hrs

Course **CAT 018**.

18919 Sat 9am to 1pm **Oct 4** Valle Verde B-161

Foundation of Microsoft Word. / \$ 45 / 4 hrs

Course **CAT 043**.

18920 Sat 9am to 1pm **Sep 6** Admin Svcs Ctr B-485



Computer Skills

Introduction to Computers. / \$ 323 / 48 hrs / 4.8 CEUs

Provides an overview of computer information systems. Introduces computer hardware, software, procedures, and human resources. Explores the integration of application usage, and provides exploration on the impact within the business community and society as a whole. **No class Sep 1 or Nov 27.** (Call 915 831-2056 for more information.)

Course **CAT 003**. Equivalent to WECM course ITSC 1001.

Conc 18921 Tue Thu 7 to 820pm **Aug 26 to Dec 11** Valle Verde AST-361
(Lab Mon to Thu)

Introduction to Excel. / \$ 100 / 12 hrs / 1.2 CEUs

Designed for those with little or no functional knowledge of Excel, as well as those who regularly use Excel at a basic level but wish to enhance their skills.

Course **CAT 051**. Equivalent to WECM course ITSW 1022.

18922 Mon Wed 6 to 8pm **Oct 27 to Nov 12** Admin Svcs Ctr B-485

Introduction to PowerPoint. / \$ 100 / 12 hrs / 1.2 CEUs

Designed for students who wish to gain a foundational understanding of Microsoft PowerPoint that is necessary to create and develop engaging multimedia presentations. **Prerequisite:** Knowledge of Microsoft Word.

Course **CAT 052**. Equivalent to WECM course ITSW 1037.

18923 Tue Thu 6 to 8pm **Oct 7 to Oct 23** Valle Verde B-123

Introduction to Word. / \$ 100 / 12 hrs / 1.2 CEUs

Provides instruction in the various aspects of the Word processing package. Create, edit, and print documents such as letters, resumes, and reports using the popular software program. **Prerequisite:** Knowledge of Windows.

Course **CAT 053**. Equivalent to WECM course POFI 1024.

18924 Tue Thu 6 to 8pm **Sep 9 to Sep 25** Valle Verde B-123

Microsoft Office 365 Essentials. / \$ 186 / 24 hrs

Master Microsoft Office 365 easily! Gain essential skills in PowerPoint, Word, and Excel to become more marketable. No shortcuts, just a convenient way to enhance your productivity and stay up-to-date with 21st-century business needs. **Prerequisite:** Basic computer skills including typing, navigating windows, using web browsers, and downloading files from email.

Course **CAT 050**.

18925 Mon Wed 6 to 8pm **Sep 8 to Oct 15** Admin Svcs Ctr B-485

Operating System Security. / \$ 431 / 64 hrs / 6.4 CEUs

Provides instruction on how to safeguard computer operating systems by demonstrating server support skills and designing and implementing a security system. Identifies security threats and monitors network security implementations. Uses industry best practices to configure **operating** systems to security standards. **No class July 4.**

Course **CAT 027**. Equivalent to WECM course ITSY 2000.

Conc 18930 Sat 11a to 140p **Aug 30 to Dec 14** Valle Verde AST-341
(Lab Mon to Sat)

Beginning Web Programming. / \$ 431 /

64 hrs / 6.4 CEUs

Develop skills in web programming including mark-up and scripting languages.

Prerequisite: CAT 003, Introduction to Computers. **No class Nov 11.**

Course **CAT 022**. Equivalent to WECM course ITSE 1011.

Conc 18931 Mon 7 to 940pm Valle Verde AST-347

Computer Fundamentals. / \$ 45 / 4 hrs

This introductory course provides essential skills and knowledge for navigating computers with confidence. You will learn fundamental computer skills including typing techniques to boost efficiency and productivity. In hands-on exercises you'll gain proficiency navigating file systems using Explorer, handling downloads, organizing files effectively and managing email. You will also explore safe browsing practices to navigate the web securely, and learn how to protect personal information while shopping online. By the end of the course you'll navigate the digital landscape easily and stay safe online.

Course **CAT 054**.

18932 Sat 830 to 1230pm **Sep 20** Admin Svcs Ctr B-485

18933 Sat 830 to 1230pm **Oct 11** Admin Svcs Ctr B-485

■ ■ Adobe Photoshop CC. / \$ 180 / 24 hrs / 2.4 CEUs

Provides the fundamentals to master the world's leading photo retouching, color painting, and image editing program. Photoshop excels as a graphics production tool for whether you are an artist who needs to create color images, or a photographer who wants to retouch proofs, or a designer editing photo montages for print and the web. **Prerequisite:** Working knowledge of Windows.

Course **CAT 005.** Equivalent to WECM course GRPH 1051.

18934 Tue Thu 6 to 9pm **Sep 9 to Oct 2** Valle Verde B-164



Introduction to PC Operating Systems. / \$ 431 / 64 hrs / 6.4 CEUs

Studies the introduction to personal computer operating systems including installation, configuration, file management, memory and storage management, control of peripheral devices, and use of utilities. **No class Nov 11 and 27.**

Course **CAT 021.** Equivalent to WECM course ITSC 1005.

Conc 18935 Tue Thu 530 to 650p **Aug 26 to Dec 11** Valle Verde AST-341
(Lab Mon to Fri)

Cisco Academy

Students must purchase their own supplies and textbooks. Email dnajera5@epcc.edu for more information, or call 915 831-2056.

CCNA 1: Introduction to Networks. / \$ 431 / 64 hrs / 6.4 CEUs

Covers networking architecture, structure, security, and functions, and introduces the principles and structure of IP addressing and the fundamentals of Ethernet concepts, media, and operations. **Prerequisite :** CAT 003, Introduction to Computers. **No class Sep 1, and Nov 11, 27, and 28.**

Course **CAT 007.** Equivalent to WECM course ITCC 1014.

18936 Mon Wed 530 to 650pm **Aug 25 to Dec 10** Valle Verde AST-363
(Lab Mon to Thu)

CCNA 2: Switching, Routing, and Wireless Essentials. / \$ 431 / 64 hrs / 6.4 CEUs

Describes the architecture, components, and operations of routers and switches in small networks, and introduces WLAN wireless local area networks and security concepts. Provides an in-depth understanding of how routers and switches operate and are implemented in the LAN environment. **Prerequisite:** CAT 007, CCNA 1: Introduction to Networks. **No class Sep 1, and Nov 11, 27, and 28.**

Course **CAT 008.** Equivalent to WECM course ITCC 1044.

Conc 18937 Mon Wed 7 to 820pm **Aug 25 to Dec 10** Valle Verde AST-363
(Lab Mon to Thu)

CCNA 3: Enterprise Networking, Security, and Automation. / \$ 431 / 64 hrs / 6.4 CEUs

Describes the architecture, components, operations, and security to scale for large, complex networks, including (WAN) wide area network technologies. Emphasizes network security concepts and introduces network virtualization and automation. **Prerequisite:** CAT 008, CCNA 2: Switching, Routing, and Wireless Essentials. **No class Sep 1, and Nov 11, 27, and 28.**

Course **CAT 009.** Equivalent to WECM course ITCC 2020.

Conc 18938 Tue Thu 530 to 650pm **Aug 26 to Dec 11** Valle Verde AST-365
(Lab Mon to Thu)

Business Management / Technical Education

Business Entrepreneurship. / \$ 115 / 12 hrs / 1.2 CEUs

This course provides an introduction to the principles of entrepreneurship. Topics include identifying potential business opportunities, self-growth and readiness, the role of an entrepreneurship process, an overview of ecommerce and drop ship models like amazon fba, an overview of how to invest stocks, and how to start your own entrepreneurship group and venture growth. Upon completion students will have real world understanding of the entrepreneurial process and issues faced by the entrepreneur. **No class Nov 11.**

Course **MGT 225.** Equivalent to WECM course BUSG 1008.

18939 Tue Thu 6 to 8pm **Nov 4 to Nov 25** Admin Svcs Ctr B-485

Introduction to Accounting I. Online with virtual lab. / \$ 323 / 48 hrs / 4.8 CEUs

Studies analyzing, classifying, and recording business transactions in a manual and computerized environment. Emphasizes understanding the complete accounting cycle, and preparing financial statements, bank reconciliations, payroll procedures and reporting. **Prerequisite:** Knowledge of computerized skills. **No class Sep 1 and Nov 11, 27, and 28.**

Course **MGT 809.** Equivalent to WECM course ACNT 1003.

Conc 36108 12am to 1159pm **Aug 25 to Dec 12** Online
(Lab 12am to 1159pm)

Court Reporter Certification Preparation.

Online with virtual lab. / \$ 368 / 48 hrs / 4.8 CEUs

Preparation for taking the Texas Certified Shorthand Reporter and the Registered Professional Reporter examinations through the use of mock exams. To exit this course, student must write on a stenographic machine with the minimum speed stated in the syllabus and pass the appropriate assessments with 95% accuracy. This course is designed to be repeated. **Prerequisite:** CRTR 2435, Accelerated Machine Shorthand. **No class Sep 1 and Nov 11, 27, and 28.**

Course **PIE 450.** Equivalent to WECM course CRTR 2031.

Conc 36110 12am to 1159pm **Aug 25 to Dec 18** Online
(Lab 12am to 1159pm)

Court Reporting Briefs. Online. / \$ 125 / 16 hrs

Will provide students additional skills and knowledge to enhance speed building by learning stenography briefs. **No class Nov 11.**

Course **PIE 214.**

18940 12am to 1159pm **Oct 13 to Nov 24** Online

Customs Broker : License Prep Course I. / \$ 375 / 30 hrs / 3.0 CEUs

This course reviews selected topics included in the Custom Broker Exam, covering subjects under course objectives, and familiarizes students with custom brokerage operations.

Course **CBL 718.** Equivalent to WECM course IBUS 2003.

18941 Tue Wed Thu 6 to 8pm **Sep 9 to Oct 9** Valle Verde B-150

Customs Broker : License Prep Course II. / \$ 375 / 30 hrs / 3.0 CEUs

Course II complements Course I by reviewing remaining topics included in the CBP Customs Brokerage Test, familiarizing students with custom brokerage operations, to include rules of origin, valuation, trade agreements, and other topics used by Custom Brokers in daily operations. **No class Nov 11.**

Course **CBL 719.** Equivalent to WECM course IBUS 2003.

18942 Tue Wed Thu 6 to 8pm **Oct 21 to Nov 25** Valle Verde B-109

New / Fundamental Payroll Certification / \$ 750 / 30 hrs / 3.0 CEUs

The Fundamental Payroll Certification is intended to provide authoritative information regarding the fundamentals of payroll and is to be used as a training tool for entry-level Payroll Practitioners, Sales Professionals and Consultants serving the payroll industry, Systems Analysts and or Engineers who write, maintain, and update the payroll programs and Payroll Service Providers and Clients Representative. **Textbook fee is included.**

Course **MGT 872.** Equivalent to WECM course ACNT 1015.

18943 Sat 830 to 1130am **Sep 6 to Nov 8** Valle Verde B-124

New / Certified Payroll Professional Exam Preparation Course / \$ 850 / 35 hrs / 3.5 CEUs

Validate your knowledge and skills with the CPP Certified Payroll Professional designation -- three little letters that demonstrate you have taken the hard road to continue your education. Embrace your continued growth in payroll with a certification that not only proves your dedication to this profession but will also open many doors in your future endeavors. **Textbook included.**

Course **MGT 873.** Equivalent to WECM course ACNT 1044.

18944 Sat 1230 to 4pm **Sep 6 to Nov 8** Valle Verde B-124

American Sign Language I. / \$ 125 / 16 hrs / 1.6 ceus

Establishes good foundation of basic ASL American Sign Language. Learn ASL vocabulary and grammar to converse with hearing-impaired individuals.

Course **PIE 857.** Equivalent to WECM course SLNG 1003.

18945 Sat 9 to 11am **Sep 6 to Oct 25** Valle Verde B-187



Preparation for the Texas Landscape Irrigation Exam. / \$ 377 / 42 hrs / 4.2 CEUs

Study of applicable codes, laws, regulations, terminology, components, installation methods, design principles, hydraulics control systems, and related information necessary for licensure and practice. Classroom instruction, lab exercises, and practical field experiences. Emphasizes design, installation, maintenance, and repair of sprinkler and irrigation systems. Prepares the student for Texas Landscape Irrigation License Exam. **Textbook is included.**

Course **SDG 705.** Equivalent to WECM course HALT 1033.

18946 Tue Thu 6 to 9pm **Sep 16 to Oct 30** Valle Verde A-1510

Real Estate

The requirement for a real estate salesperson's license in the State of Texas is 180 contact hours. Go to trec.texas.gov for more information.

There are six mandatory 30-hour courses in Spring, Summer, and Fall.

- 1 Principles of Real Estate I
- 2 Principles of Real Estate II
- 3 Law of Agency
- 4 Law of Contracts
- 5 Promulgated Contract Forms
- 6 Real Estate Finance

Principles of Real Estate I. / \$ 250 / 30 hrs / 3.0 CEUs

This course provides instruction for fundamental real estate principles and practices in Texas. TRELA, TREC, federal, state, and local laws and regulations relating to housing and real estate in general, including discrimination.

Course **RES 813.** Equivalent to WECM course RELE 1002.

18947 Mon Wed 6 to 9pm **Sep 8 to Oct 8** Valle Verde B-105

Principles of Real Estate II. / \$ 250 / 30 hrs / 3.0 CEUs

Required course for application of salesperson's license. Fundamental principles and practices of real estate. Emphasis will be placed on real estate contracts, mortgage theory and law, deed of trust, taxes and assessment, and closing transaction. The course provides coverage of real estate leases / property management, investments, and land use-control. Includes a review of topics covered in Real Estate I.

Course **RES 814.** Equivalent to WECM course RELE 1039.

18949 Tue Thu 6 to 9pm **Sep 9 to Oct 9** Valle Verde B-108

Real Estate Finance. / \$ 250 / 30 hrs / 3.0 CEUs

Required course for application of a salesperson's license. Provides an overview of the US monetary system, primary and secondary money markets, sources of mortgage loans, federal government programs, loan applications, processes and procedure, closing costs, alternative instruments, laws affecting mortgage lending, and the State Housing Agency.

Course **RES 855**. Equivalent to WECM course RELE 1020.

18948 Sat 9am to 12pm **Sep 20 to Nov 22** Valle Verde B-105

Law of Agency. / \$ 250 / 30 hrs / 3.0 CEUs

Studies the creation of principal-agent relationships, the authority of an agent, agent fiduciary duties, agency disclosure requirements, and agency termination. The course examines other real estate employment and regulatory requirements as related to the real estate profession and agency. Legal principles will be reinforced by case studies and student participation.

Course **RES 815**. Equivalent to WECM course RELE 2002.

18950 Mon Wed 6 to 9pm **Oct 13 to Nov 12** Valle Verde B-101

Law of Contracts. / \$ 250 / 30 hrs / 3.0 CEUs

Required course for application of a salesperson's license. Includes studies of Texas Real Estate Commission rules, an emphasis on elements of contracts, offer and acceptance, and remedies of breach of contracts. **No class Nov 11.**

Course **RES 852**. Equivalent to WECM course RELE 1012.

18951 Tue Thu 6 to 9pm **Oct 14 to Nov 18** Valle Verde B-110



Promulgated Contract Forms. / \$ 250 / 30 hrs / 3.0 CEUs

This course includes but is not limited to unauthorized practice of law, broker-lawyer committee, current promulgated and approval forms, commission rules governing use forms and case studies involving use of forms.

Course **RES 816**. Equivalent to WECM course RELE 1000.

18952 Mon Wed 6 to 9pm **Nov 17 to Dec 17** Valle Verde B-108

Professional Floral Design Certificate

If you have a creative nature and a strong desire to own your business or work in a floral shop, this program is designed to meet your needs.

- 1** Floral Design **2** Floral Design II **3** Sympathy Floral Techniques
4 Wedding Floral Techniques **5** Flower Shop Management

Floral Design. / \$ 475 / 48 hrs / 4.8 CEUs

Principles of floral art with an emphasis in commercial design. Topics include basic design styles and color harmonies; identification, use and care of processing of cut flowers and foliage; mechanical aids and containers; personal flowers; holiday designs; and plant identification and care.

Supplies included in fee.

Course **SDG 913**. Equivalent to WECM course FMKT 1015.

18954 Tue Thu 6 to 9pm **Sep 9 to Oct 30** Valle Verde B-151

Floral Design II. / \$ 350 / 33 hrs / 3.3 CEUs

This class will include advanced floral design practices for the retail floral industry. Topics include contemporary floral arrangement styles and trends.

Prerequisite: SDG 913, Floral Design. **Supplies included in fee. No class Nov 11.**

Course **SDG 914**. Equivalent to WECM course FMKT 2031.

18955 Tue Thu 6 to 9pm **Nov 4 to Dec 16** Valle Verde B-151

Flower Shop Management. / \$ 160 / 21 hrs / 2.1 CEUs

Modern principles and practices used in the management and operations of retail florist shops. Topics include the structure of the industry, shop location, business plan organization, marketing methods, and management practices.

Supplies included in fee.

Course **SDG 203**. Equivalent to WECM course FMKT 2035.

18953 Mon Wed 6 to 9pm **Oct 6 to 27** Valle Verde B-151

EPCC in Partnership with ed2go

are offering the following online courses:

Please visit ED2GO at www.ed2go.com/epcc for many other course offerings.

Fundamental Courses 24 Hrs.

Business

- Administrative Assistant Fundamentals
- Become a Grant Writing Consultant
- Computer Skills for the Workplace
- Distribution and Logistics Management
- Fundamentals of Supervision and Management
- Business Budgeting for Beginner
- Getting Started with Google Workspace
- Personal Finance



Computer Programming

- Designing Effective Websites
- Introduction to C# Programming
- Introduction to CSS3 and HTML5
- Introduction to Java Programming
- Introduction to PC Security
- Introduction to Python 3 Programming



Computer Applications

- Introduction to Microsoft Access 2019
- Introduction to Microsoft Excel 2019
- Intermediate Microsoft Excel 2019

Career Training Programs Certification

Online Career Training Programs

These 6 to 18 month programs are online, self-paced instruction that prepare students for industry certification or any career. Below is a limited sample of courses that are been offered.

See ED2GO at careertraining.epcc.edu for more course offerings.

- | | |
|--|---|
| • Freight Broker/Agent Training (6 Months) | • Python Developer (6 Months) |
| • Chartered Tax Professional (18 Months) | • Certified Bookkeeper - Exam Included (6 Months) |
| • Certified Residential Interior Designer (6 Months) | • Certified Professional Life Coach (6 Months) |
| • Certified Paralegal (12 Months) | • Certified Java Developer (6 Months) |

Call: 855-520-6806 for more information on the Career Training Programs

EPCC Employees: Staff Scholarship is available to pay for ED2GO online courses.

Need to reach out to mmlerma14@epcc.edu at extension 6682.

Health and Fitness

Cheryl Stiles, Director. For more information, email cehealthprograms@epcc.edu or call 915 **831-7820** or **831-7831**.

General Information for Continuing Education Health Courses

These courses have prerequisites or admission requirements mandated by federal law, state law, and local clinical affiliates.

Course prerequisites include

- : **Immunizations.** Hepatitis B, Varicella, Measles, Mumps, Rubella, seasonal flu, Tetanus, Diphtheria, Pertussis or (TDAP), and the two-step tuberculosis skin test.
- : **Positive blood titers.** Students with a hospital clinical rotation must have positive blood titers for hepatitis B, varicella, measles mumps, and rubella. COVID-19 vaccinations may be required by some clinical facilities.
- : **Physical exam** by a physician, physician's assistant, or nurse practitioner licensed to practice in the United States.
- : **Background clearance.** Use the approved EPCC vendor American Databank, at elpasoex.com. Complete this once you have a seat reserved in class.
- : **Drug screen.** Use the approved EPCC vendor American Databank, at elpasoex.com. Complete this once you have a seat reserved in class.
- : **Basic Life Support Provider certification** from the American Heart Association.
- : **Community-Wide Orientation.** Find orientation information at epcc.edu/admissions/orientation/community-wide-orientation.
- : **HIPAA training.** Go to epcc.edu/academics/health/hipaa for this.
- : **Course-specific requirements.** Some courses have reading level, high school diploma, or GED requirements. (Some classes require first aid certification.) Reading level can be proven by prior college coursework or by placement at college-level English language Arts Reading by TSIA2 or equivalent. Get tested at any EPCC Testing Services Center.
- : **Buy the Complo tracking system.** EMT students must purchase Complo from American Databank to help be compliant with CPR, first aid, immunizations, physical exam, and other requirements. This system keeps your clinical data updated and compliant.

For information about requirements, call 915 831-7830.

BLS, BLS Renewal and First Aid

BLS: Basic Life Support. / \$ 66 / 5 hrs

This American Heart Association course presents initial CPR for infants, children, and adults, and includes foreign-body airway obstruction, barrier devices, and AED automated external defibrillation training. It meets EPCC specialized admission requirements for health students. **Book provided in class.** (Don't wear shorts, dresses, halter tops or skirts to class.)

Course **SDH 762.**

| | | | |
|-------|--------------------|----------------------|----------------------|
| 35566 | Tue Thu 530 to 8pm | Aug 12 and 14 | Admin Svcs Ctr B-580 |
| 35567 | Sat 8am to 1pm | Aug 16 | Rio Grande A-245 |
| 35568 | Tue 8am to 1pm | Aug 19 | Admin Svcs Ctr B-323 |
| 35569 | Sat 8am to 1pm | Aug 23 | Rio Grande A-245 |
| 18746 | Sat 8am to 1pm | Sep 6 | Rio Grande A-245 |
| 18747 | Tue Thu 530 to 8pm | Sep 9 and 11 | Rio Grande A-245 |
| 18748 | Sat 8am to 1pm | Sep 13 | Rio Grande A-245 |
| 18749 | Tue Thu 530 to 8pm | Sep 16 and 18 | Admin Svcs Ctr B-322 |
| 18750 | Sat 8am to 1pm | Sep 20 | Rio Grande A-245 |
| 18751 | Fri 8am to 1pm | Sep 26 | Admin Svcs Ctr B-323 |
| 18752 | Sat 8am to 1pm | Sep 27 | Rio Grande A-245 |
| 18753 | Sat 8am to 1pm | Oct 4 | Rio Grande A-245 |
| 18754 | Tue Thu 530 to 8pm | Oct 7 and 9 | Admin Svcs Ctr B-322 |
| 18755 | Sat 8am to 1pm | Oct 11 | Rio Grande A-245 |
| 18756 | Sat 8am to 1pm | Oct 18 | Rio Grande A-245 |
| 18757 | Sat 8am to 1pm | Oct 25 | Rio Grande A-245 |
| 18758 | Sat 8am to 1pm | Nov 8 | Rio Grande A-245 |
| 18759 | Sat 8am to 1pm | Nov 15 | Rio Grande A-245 |
| 18760 | Tue Thu 530 to 8pm | Nov 18 and 20 | Admin Svcs Ctr B-322 |
| 18761 | Sat 8am to 1pm | Nov 22 | Rio Grande A-245 |
| 28199 | Sat 8am to 1pm | Dec 6 | Rio Grande A-245 |
| 28200 | Tue Thu 530 to 8pm | Dec 9 and 11 | Admin Svcs Ctr B-322 |
| 28201 | Sat 8am to 1pm | Dec 13 | Rio Grande A-245 |
| 28202 | Tue 8am to 1pm | Dec 16 | Admin Svcs Ctr B-323 |

BLS Renewal. / \$ 64 / 4 hrs

Basic Life Support review updates CPR skills, extending certification two years. **Prerequisite:** Must be BLS certified. Bring current BLS provider card to class. **Book provided in class.** (Don't wear shorts, dresses, halter tops or skirts to class.)

Course **SDH 760.**

| | | | |
|-------|------------------|---------------|----------------------|
| 35595 | Sat 8am to noon | Aug 9 | Rio Grande B-205 |
| 35596 | Thu 8am to noon | Aug 21 | Admin Svcs Ctr B-323 |
| 35597 | Fri 8am to noon | Aug 23 | Rio Grande B-205 |
| 18762 | Wed 530 to 930pm | Sep 10 | Admin Svcs Ctr B-322 |
| 18763 | Sat 8am to noon | Sep 13 | Rio Grande B-205 |
| 18764 | Wed 530 to 930pm | Sep 24 | Admin Svcs Ctr B-322 |
| 18765 | Sat 8am to noon | Sep 27 | Rio Grande B-205 |
| 18766 | Sat 8am to noon | Oct 4 | Rio Grande B-205 |
| 18767 | Wed 530 to 930pm | Oct 15 | Admin Svcs Ctr B-322 |
| 18768 | Sat 8am to noon | Oct 18 | Rio Grande B-205 |
| 18769 | Fri 8am to noon | Oct 24 | Admin Svcs Ctr B-323 |
| 18770 | Sat 8am to noon | Nov 8 | Rio Grande B-205 |
| 18771 | Thu 530 to 930pm | Nov 13 | Admin Svcs Ctr B-322 |
| 18772 | Fri 8am to noon | Nov 21 | Admin Svcs Ctr B-323 |
| 28203 | Sat 8am to noon | Dec 6 | Rio Grande B-205 |
| 28204 | Sat 8am to noon | Dec 13 | Rio Grande B-205 |
| 28205 | Thu 8am to noon | Dec 18 | Admin Svcs Ctr B-323 |

Must be BLS certified to enroll. Bring current provider card to class.

First Aid. / \$ 75 / 8 hrs

Properly applied first aid may mean the difference between life and death. Emphasizes fundamental principles and skills of standard first aid.

Prerequisite: Current BLS provider certification. **Note: Students will receive an instruction sheet in class with an Access Code to redeem First Aid e-book. Cost of e-book is included in tuition.** CPR card must be brought to class. **One hour lunch at instructor's discretion.**

Course **SDH 971.** Equivalent to WECM course EMSP 1026.

| | | | |
|-------|----------------------|----------------------|----------------------|
| 35606 | Sat 8am to 5pm | Aug 16 | Rio Grande B-205 |
| 35607 | Wed 8am to 5pm | Aug 20 | Admin Svcs Ctr B-323 |
| 35508 | Sat 8am to 5pm | Aug 23 | Rio Grande B-210 |
| 18773 | Sat 8am to 5pm | Sep 6 | Rio Grande B-211 |
| 18774 | Fri 8am to 5pm | Sep 12 | Admin Svcs Ctr B-323 |
| 18775 | Sat 8am to 5pm | Sep 13 | Rio Grande B-211 |
| 18776 | Sat 8am to 5pm | Sep 20 | Rio Grande B-205 |
| 18777 | Tue Thu 530 to 930pm | Sep 23 and 25 | Admin Svcs Ctr B-322 |
| 18778 | Sat 8am to 5pm | Sep 27 | Rio Grande B-211 |
| 18779 | Sat 8am to 5pm | Oct 11 | Rio Grande B-211 |
| 18780 | Tue Thu 530 to 930pm | Oct 14 and 16 | Admin Svcs Ctr B-322 |
| 18781 | Sat 8am to 5pm | Oct 25 | Rio Grande B-211 |
| 18782 | Sat 8am to 5pm | Nov 8 | Rio Grande B-211 |
| 18783 | Sat 8am to 5pm | Nov 15 | Rio Grande B-211 |
| 18784 | Sat 8am to 5pm | Nov 22 | Rio Grande B-210 |
| 28206 | Tue Thu 530 to 930pm | Dec 2 and 4 | Admin Svcs Ctr B-322 |
| 28207 | Sat 8am to 5pm | Dec 6 | Rio Grande B-211 |
| 28208 | Wed 8am to 5pm | Dec 17 | Admin Svcs Ctr B-323 |

Must be **BLS certified** to enroll. Bring current provider card to class.

■ CPR and First Aid for Industry. / \$ 95 / 8 hrs

Are you or your employees prepared to handle injuries that occur on the job? Introduces adult CPR and the basic principles of standard first aid. It will be customized to address the types of injuries which might occur in your workplace using the Emergency Care and Safety Institute Standards. The course can be taught at your location or at EPCC. The Emergency Care Safety Institute First Aid, CPR and AED textbook is included in the cost of the course. Call 915 831-7831 to schedule the course.

Course **SDH 252.** Equivalent to WECM course EMSP 1026.

Clases de RCP en Español

RCP : Resucitación Cardiopulmonar En Español.

/ \$ 66 / 5 hrs

Este curso de la Asociación Americana del Corazón incluye Resucitación Cardiopulmonar, o RCP, para infante y adulto, obstrucciones de las vías aéreas, barreras de protección personal y uso de desfibriladores externos automáticos. El libro se da en clase. El costo del libro está incluido en el precio del curso. Favor de no llevar puesto pantalón corto, falda ó vestido.

Course **SDH 762.**

| | | | |
|-------|-------------------|--------------|------------------|
| 18785 | Sabado 8am to 1pm | Sep 6 | Rio Grande A-232 |
| 18786 | Sabado 8am to 1pm | Nov 8 | Rio Grande A-232 |

Renovación de RCP. / \$ 64 / 4 hrs

Repaso del curso de proveedor de soporte vital básico para actualizar sus habilidades de RCP y extender la certificación por dos años. **Requisito previo:** Tener una certificación BLS actual para inscribirse en esta clase. La tarjeta de proveedor de BLS actual debe traerse a clase. **Nota:** El libro se entregará en clase. El costo del libro está incluido en el precio del curso. Los estudiantes no deben usar pantalones cortos, vestidos ó faldas en clase.

Course **SDH 760.***

| | | | |
|-------|--------------------|--------------|------------------|
| 18787 | Sabado 8am to noon | Oct 4 | Rio Grande A-232 |
|-------|--------------------|--------------|------------------|

Dental

El Paso Community College offers the following dental courses to meet TSBDE continuing education requirements -- at tsbde.texas.gov -- for professional development and patient safety.

Dental Assistants must have at least 2 years of experience and a current CPR certification. Provide proof of certification and experience to the Continuing Education for Health office by emailing sdiaz5@epcc.edu or faxing letters to 915 **831-7853**.

Requirements for Coronal Polishing and Pit and Fissure Sealant Application Classes.

For the clinical portion, students must

- : Wear scrubs and bring a lab coat. (Can be disposable.)
- : Bring protective eyewear that covers prescription eyewear
- : Bring a sterilized straight hand piece, for Coronal Polishing class only

Patient information for students enrolled in Pit and Fissure Sealant Application clinical portion

- : Students must bring a patient with 4 qualifying teeth and current radiographs within the last six months. If the patient is under age 18, they must have a parent or legal guardian present.
- : Patients must arrive at the EPCC dental clinic at 1pm, and must be able to stay for the remainder of the afternoon.

Coronal Polishing. / \$ 237 / 8 hrs / 0.8 CEUs

Includes a brief discussion of the techniques and safety considerations of coronal polishing. Hands-on instruction in the performance of coronal polishing techniques is included.

Course **AHD 101.**

19096 Sat 8am to 5pm **Nov 8** Rio Grande H-118

Pit and Fissure Sealant Application. / \$ 249.50 / 8 hrs / 0.8 CEUs

Includes a brief discussion of the techniques, materials, and safety considerations for the placement of pit and fissure sealants. Hands-on instruction in the application of sealants is included.

Course **AHD 102.**

19097 Sat 8am to 5pm **Oct 11** Rio Grande H-118

Nitrous Oxide Sedation Monitoring and Exam. / \$ 200 / 8 hrs / 0.8 CEUs

In accordance with state rules, this course has been approved by the TSBDE, the Texas State of Dental Examiners. Includes a discussion in safety considerations and legal aspects of nitrous oxide sedation with an emphasis on the role and responsibilities in the monitoring of nitrous oxide sedation.

Course **AHD 100.**

19098 Sat 8am to 5pm **Sep 13** Admin Svcs Ctr B-585

Emergency Medical Services

■ ■ ACLS : Advanced Cardiac Life Support. / \$ 240 / 12 hrs / 1.2 CEUs

Skill development for professional personnel practicing in critical care units, emergency departments, and paramedic ambulances. Establishes a system of protocols for management of patients experiencing cardiac difficulties.

Prerequisite: Must hold current BLS Provider certification. One hour lunch at instructor's discretion. **Textbook provided in class.**

Course **SDH 929.** Equivalent to WECM course EMSP 1019.

18788 Sat 8am to 5pm **Sep 20 and 21** Admin Svcs Ctr B-323
Sun 8am to noon

18789 Sat 8am to 5pm **Nov 15 and 16** Admin Svcs Ctr B-323
Sun 8am to noon

Advanced Cardiac Life Support Refresher. / \$ 160 / 8 hrs / 0.8 CEUs

Refresher course for professional personnel practicing in critical care units, emergency departments, and paramedic ambulances. Reviews the system of protocols for management of patients experiencing cardiac difficulties.

Prerequisite: Must hold current BLS Provider and ACLS certifications. One hour lunch at instructor's discretion. **Textbook provided in class.**

Course **SDH 886.** Equivalent to WECM course EMSP 2036.

18790 Sat 8am to 5pm **Oct 4** Admin Svcs Ctr B-323

18791 Sat 8am to 5pm **Nov 22** Admin Svcs Ctr B-323



PALS : Pediatric Advanced Life Support. / \$ 330 / 16 hrs / 1.6 CEUs

A system of protocols for management of the pediatric patient experiencing difficulties in medical and trauma-related emergencies. Allows health care professionals involved in the care of pediatric patients to practice and improve their knowledge and skills in pediatric assessment and resuscitation.

Prerequisite: Current BLS Provider certification. One hour lunch at instructor's discretion. **Textbook provided.**

Course **SDH 892.** Equivalent to WECM course EMSP 1047.

18792 Sat Sun 8am to 5pm **Oct 11 and 12** Admin Svcs Ctr B-323

PALS : Pediatric Advanced Life Support Refresher. / \$ 160 / 8 hrs / 0.8 CEUs

A review of the PALS course allows health care professionals involved in the care of pediatric patients to review, practice, and improve their knowledge and skills in pediatric assessment and resuscitation. **Prerequisite:** Current BLS Provider and PALS certifications. One hour lunch at instructor's discretion. **Textbook provided in class.**

Course **SDH 653.** Equivalent to WECM course EMSP 2036.

18793 Sat 8am to 5pm **Oct 25** Admin Svcs Ctr B-323

Emergency Medical Technician

To register for the following concurrent EMT courses, students must email to cehealthprograms@epcc.edu the following prerequisites. Call 915 **831-7820** for more information.

- : High school diploma or GED
- : Proof of 12th grade reading level
- : BLS certification card certified within the last six months
- : Copy of current health insurance
- : Complio immunizations tracker

See page 9 for further requirements.

EMT Basic

This two-part course covers the principles and skills of pre-hospital emergency medical care. The clinical includes ambulance and hospital experience. Upon successful completion, student can take the State Certification Exam for EMT-Basic.

Student must enroll in SDH 884 and 872 concurrently.

Conc indicates a concurrent course open to both degree-plan and CE students. It is limited to age 17 or older. See page 51.



Emergency Medical Technician Basic. / \$ 685 / 160 hrs / 16.0 CEUs

Introduces the level of EMT Emergency Technician Basic. Includes skills necessary to provide emergency medical care at a basic life support level with an ambulance service or other specialized services. **Corequisite:** SDH 872, Clinical Emergency Medical Technology / Technician I. You are strongly urged to take Anatomy and Physiology if you plan to take advanced EMT courses.

Course **SDH 884**. Equivalent to WECM course EMSP 1001.

Conc 36089 Mon Wed Fri 8 to 1120am **Aug 25 to Dec 12** MDP L-153 Lab TBA

Conc 18794 Tue Thu 8am to 1259pm **Aug 26 to Dec 12** MDP L-153 Lab TBA

Conc 18795 Tue Thu 8am to 1pm **Aug 26 to Dec 12** ASC B-323 Lab TBA

Clinical Emergency Medical Technology / Technician I. / \$ 173.50 / 80 hrs / 8.0 CEUs

Provides a health-related, work-based learning experience enabling students to employ specialized occupational theory, skills, and concepts. A clinical professional provides direct supervision. **Corequisite:** SDH 884, EMT : Basic.

Course **SDH 872**. Equivalent to WECM course EMSP 1060.

Conc 36054 Mon to Sun TBA **Aug 25 to Dec 12** Mission Del Paso D-134

Conc 36095 Mon to Sun TBA **Aug 25 to Dec 12** Mission Del Paso D-134

Conc 18799 Tue Thu TBA **Aug 26 to Dec 12** Admin Svcs Ctr B-323

General Health Courses

Conc indicates a concurrent course open to both degree-plan and CE students. It is limited to age 17 or older. See page 53.

Essentials of Medical Terminology. Online. / \$ 324 / 32 hrs / 3.2 CEUs

Studies common medical terminology, word origin, structure, and application.

Course **AHP 792**. Equivalent to WECM course HPRS 1006.

Conc 36092 Online course times TBA **Aug 25 to Dec 12** Online

Essentials of Medical Terminology. / \$ 274 / 32 hrs / 3.2 CEUs

Studies common medical terminology, word origin, structure, and application.

Course **AHP 809**. Equivalent to WECM course HPRS 1006.

Conc 18796 Mon Wed 11 to 1150am **Aug 25 to Dec 12** Transmountain 2001

Conc 18797 Tue Thu 230 to 320am **Aug 26 to Dec 12** Valle Verde B-101

Conc 18798 Tue 4 to 559pm **Aug 26 to Dec 12** Rio Grande A-232

Interpretation of Lab Results. Online. / \$ 324 / 32 hrs / 3.2 CEUs

Introduces interpretation of commonly ordered laboratory test results used to evaluate patient's status.

Course **AHP 510**. Equivalent to WECM course HPRS 1009.

Conc 36093 Online course times TBA **Aug 25 to Dec 12** Rio Grande / online

EPCC and Ed2Go offer 6-week online courses to help you begin or advance your health education. We also offer wellness classes.

Here are a few examples.

- : Spanish for Medical Professionals, I and II.
- : Medical Math.
- : Certificate in End Life Care.
- : Certificate in Gerontology.
- : Certificate in Infectious Diseases and Infection Control.
- : Certificate in Healthy Aging.
- : HIPAA Compliance.
- : TEAS Prep Series.
- : Lose Weight and Keep It Off.
- : Introduction to Natural Healing.
- : Certificate in Energy Medicine.
- : Certificate in Complementary and Alternative Medicine.
- : Certificate in Food, Nutrition, and Health.

Go to the Ed2go catalog at ed2go.com/epcc for more information, details, and many more courses.

Medication Aide

Continuing Education Rules for Medication Aides.

The Texas Health and Human Services Commission (THHSC), requires that Medication Aides attend a seven-hour Medication Aide Update course to maintain certification. THHSC recommends that Medication Aides take the update course at least 90 days prior to the expiration date of their permit. Students must bring their Medication Aide permit number to class, so the hours can be reported to THHSC.

/ **Go to** txhhs.my.site.com/tulip/login for more information about the renewal licensing process and a link to the Tulip login page.

Medication Aide Update. / \$ 70 / 7 hrs / 0.7 CEUs

Fulfills the annual renewal requirements for Certified Medication Aides according to specifications of the Texas Health and Human Services Commission. Students must register 2 weeks before the start of class.

Course **AHP 802**. Equivalent to WECM course NURA 1041.

| | | | |
|-------|----------------|---------------|------------------|
| 18800 | Sat 9am to 5pm | Oct 18 | Rio Grande A-236 |
| | Sat 9am to 5pm | Dec 6 | Rio Grande A-236 |

Medication Aide. / \$ 500 / 140 hrs / 14.0 CEUs

Approved by the Texas Health and Human Services Commission, this course prepares Certified Nurse Aides to administer routine medications to people in a skilled nursing facility, MHMR facility, correctional institution, or personal care facility. The course is designed for individuals who work directly with patients in a health care setting under the supervision of a nurse. The course will also address the responsibilities associated with the preparation and administration of designated medications.

Course prerequisites

- : Aged 18 years or older
- : High school diploma or GED
- : Social Security card and a Nurse Aide license
- : College level coursework / 10th-grade reading level -- tested
- : Clearance letter from current employer stating student is free of communicable diseases and in suitable physical, and emotional health to safely administer medications
- : Employment in a long-term care facility allowing student to complete a 10-hour clinical at this location
- : Fingerprint-based criminal history check by the Department of Public Safety, paid for through the DPS vendor at dps.texas.gov/section/crime-records
- : Textbook and drug handbook, which must be brought to the first day of class. Buy these at the Rio Grande campus bookstore

After these prerequisites are presented to the division office, students are admitted on a first-come, first-served basis. Class is limited to 12 students.

Course **AHP 801**. Equivalent to WECM course NURA 1013.

| | | | |
|-------|----------------------|------------------------|------------------|
| 36049 | Mon Tue 530 to 930pm | Aug 4 to Dec 15 | Rio Grande A-236 |
|-------|----------------------|------------------------|------------------|

Contact the Continuing Education for Health office at 915 **831-7740** for more information.

Nursing Refresher

Includes a 16-week online instruction course through Austin Community College, a skills lab review course, and a clinical preceptorship appropriate for both RNs and LVNs. Nurses review basic medical surgical nursing knowledge and skills in preparation for returning to the clinical setting.

Students will take an online theory portion with Austin Community College and the Nursing Skills Lab Review at EPCC, and for the clinical portion will be placed in a local hospital with a preceptor.

Course designed for

- : Currently-licensed RN or LVN nurses who have been away from the clinical setting for a period of time, and who want a good medical or surgical refresher before going back to the clinical setting.
- : Nurses applying for reinstatement of their Texas nursing license who need or are required to complete a nursing refresher course
- : Nurses from another state or country applying for Texas nursing licensure, and are required to complete a nursing refresher course.

See page 9 for a list of prerequisites that need to be submitted to the Continuing Education office at the Administrative Services Center, Room B-425.

Reentry Nursing Update. Online. / 128 hrs LVN Refresher Theory. Online. / 128 hrs

Interested students should **call** Wendy Pickard, Austin Community College's nurse reentry program coordinator, at 512 223-7119, or **email** her at wpickard@austinctc.edu. / **Go to** continue.austinctc.edu/nursing for more information on courses and registration.

Professional Nursing Review. / \$ 200 / 18 hrs / 1.8 CEUs

Course **AHP 354**. Equivalent to WECM course RNSG 2030.

| | |
|---------------------|------------------------|
| Times and dates TBA | Rio Grande Nursing Lab |
|---------------------|------------------------|

Clinical : Licensed Practical / Vocational Nursing Training. / \$ 300 / 80 hrs / 8.0 CEUs

Course **AHP 803**. Equivalent to WECM course VNSG 1060.

| | |
|----------------------|----------------|
| Times and dates TBA. | Local hospital |
|----------------------|----------------|

Clinical : Nursing Registered Nurse Training. / \$ 300 / 80 hrs / 8.0 CEUs

Course **AHP 804**. Equivalent to WECM course RNSG 1060.

| | |
|----------------------|----------------|
| Times and dates TBA. | Local hospital |
|----------------------|----------------|

Call 915 **831-7830** for further information.



Pharmacy Technician

Conc indicates a concurrent course open to both degree-plan and CE students. It is limited to age 17 or older. See page 53.

Concurrent Pharmacy Courses

■ ■ Pharmacy Terminology. / \$ 300 / 32 hrs / 3.2 CEUs

Provides a study of word origins and structure by introducing prefixes, suffixes, and root words as they relate to a pharmaceutical setting. Focuses on translation and recognition of commonly-used pharmacy abbreviations.

Course **AHP 393**. Equivalent to WECM course PHRA 1015.

Conc 36097 Online course times TBA **Aug 25 to Dec 12** Online

Compounding Sterile Preparation and Aseptic Techniques. / \$ 410 / 80 hrs / 8.0 CEUs

Studies the sterile products, legal and regulatory guidelines, hand washing techniques, pharmaceutical calculations, references, safety techniques, aseptic techniques in parenteral compounding, proper use of equipment, preparation of sterile products, and safe handling of antineoplastic drugs. **Permission from instructor is required for admission. Call 915 831-4490.**

Course **AHP 798**. Equivalent to WECM course PHRA 1045.

| | | | |
|------------|-----------------------|-------------------------|------------------|
| Conc 18805 | Tue lab 830 to 950pm | Aug 25 to Dec 12 | Rio Grande J-664 |
| | Thu lab 830 to 1020am | | Rio Grande B-308 |
| | Lecture TBA | | Online |

Pharmacy Drug Therapy and Treatment. / \$ 682 / 96 hrs / 9.6 CEUs

Studies therapeutic agents, their classifications, properties, actions, and effects on the human body and their role in the management of disease. Provides detailed information regarding drug dosage, side effects, interactions, toxicities, and incompatibilities.

Course **AHP 777**. Equivalent to WECM course PHRA 1041.

| | | | |
|------------|----------------------|-------------------------|------------------|
| Conc 18806 | Mon Wed 10 to 1120am | Aug 25 to Dec 12 | Rio Grande J-655 |
| | Lab TBA | | Hybrid online. |

EKG Technician

EKG Technician. / \$ 420 / 48 hrs / 4.8 CEUs

Includes practice and background information on anatomy and physiology of the heart, disease processes, medical terminology, medical ethics, legal aspects of patient contact, and laboratory assisting electrocardiography. Students practice with equipment in hands-on labs, which include the function and proper use of an EKG machine, 12-lead placement with proper placement upon the normal anatomy of the chest wall, and other clinical practices. Recommended for healthcare professionals such as CNAs, phlebotomists, EMTs, and medical assistants. **Prerequisites:** Current BLS certification.

Course **AHP 552**. Equivalent to WECM course ECRD 1011.

| | | | |
|-------|----------------------|------------------------|----------------------|
| 18807 | Mon Wed 10am to noon | Sep 3 to Nov 24 | Admin Svcs Ctr B-323 |
|-------|----------------------|------------------------|----------------------|

Nursing Assistant

Interested in a health career? The nursing assistant course is an excellent starting place. Nursing assistants are the caregivers who help patients of all ages perform the most basic day-to-day tasks. Nursing assistant is one of the fastest growing occupations in the nation. **Prerequisites for this course are listed on page 9.** (Please contact division office for clarification of prerequisites.)

Student must have book on the first day of class. Student must be 17 years old by the first day of class.

Proof of prerequisites must be submitted to the Continuing Education office prior to registration. Call 915 **831-7740** or email cehealthprograms@epcc.edu for more information.

Nursing Assistant Theory. / \$ 350 / 112 hrs / 12.0 CEUs

Presents the concepts and skills required to provide basic patient care in a health care facility or in a person's home. Topics include patient's rights, communication, safety, observation, reporting, and assisting patients in maintaining basic comfort and safety. Emphasis on effective interaction with members of the health care team.

Course **AHP 117**. Equivalent to WECM course NURA 1091.

| | | | |
|-------|-----------------------|-------------------------|------------------|
| 36096 | Mon to Fri 8am to 3pm | Aug 11 to Sep 5 | Rio Grande A-236 |
| 18801 | Mon to Fri 8am to 3pm | Sep 22 to Oct 17 | Rio Grande A-236 |
| 18802 | Mon to Fri 8am to 3pm | Nov 3 to 26 | Rio Grande A-236 |

Nursing Assistant Clinical. / \$ 350 / 80 hrs / 8.0 CEUs

A work-based learning direct patient care experience that allows students to apply knowledge learned in the Nursing Assistant class. **Note:** Professional Practice Insurance fee is included in tuition.

Course **AHP 118**. Equivalent to WECM course NURA 1060.

| | | | |
|-------|---------------------------|---------------------|------------------|
| 18803 | Mon to Fri 630am to 330pm | Sep 8 to 19 | Private facility |
| 18804 | Mon to Fri 630am to 330pm | Oct 20 to 31 | Private facility |
| 28212 | Mon to Fri 630am to 330pm | Dec 1 to 12 | Private facility |



Patient Care Technician

Patient Care Technician. / \$ 500 / 48 hrs / 4.8 CEUs

Prepares students for an entry-level position within a healthcare setting such as a hospital or subacute care setting. Patient Care Technicians care for injured, physically and mentally ill, disabled, and infirm patients. They perform routine tasks under the supervision of doctors, nurses and other medical professionals, monitor the patient's condition, and provide basic patient care. The PCT plays a vital role in the healthcare delivery team, and often have more patient contact than other team members, including doctors and nurses. **Prerequisites:** Nurse Assistant, Phlebotomy, and EKG Technician, or completion of courses in EMT and Medical Assistant.

Course **AHP 560.** Equivalent to WECM course NUPC 1020.

| | | | |
|-------|------------------|------------------------|----------------------|
| 18813 | Mon Wed 1 to 3pm | Sep 3 to Nov 24 | Admin Svcs Ctr B-323 |
|-------|------------------|------------------------|----------------------|

Phlebotomy Technician

Phlebotomy Technician : Theory. / \$ 400 / 90 hrs / 9.0 CEUs

Prepares students for entry-level positions in phlebotomy and laboratory support services. Upon completion, students are eligible to sit for the phlebotomy technician examination offered by ASCP, the American Society of Clinical Pathology. The course presents principles and procedures, both theoretical and practical, associated with the collection of clinical blood specimens. Course includes anatomy and physiology of the cardiovascular system, specimen collection, processing and handling; laboratory operations (safety, QC, QA, etc), professionalism, ethics, legal issues, safety, infection control, and medical terminology. Skills learned include venipuncture, skin puncture, and special blood collections. **Prerequisites:** See page 9 for general requirements. Requires high school diploma or GED, and a tested 10th-grade reading level. **Corequisite:** Phlebotomy Technician Clinical AHP 806. Enrollment is limited to 24 students. Student must purchase the required textbook, scrubs, and an EPCC patch. For further information, call the division office at 915 831-7830.

Course **AHP 805.** Equivalent to WECM course PLAB 1023.

| | | | |
|-------|------------------|-------------------------|------------------|
| 18809 | Mon Wed 1 to 4pm | Aug 25 to Dec 10 | Rio Grande J-731 |
| 18810 | Tue Thu 1 to 4pm | Aug 26 to Dec 11 | Rio Grande J-731 |

Phlebotomy Technician Clinical. / \$ 300 / 120 hrs / 12.0 CEUs

This course must be taken concurrently with AHP 805, Phlebotomy Technician Theory. Students will demonstrate venous and capillary blood drawing techniques and procedures required to perform as an entry level Phlebotomy Technician, based on Clinical and Laboratory Standards Institute (CLSI). Students will be required to travel to various clinical sites and be available for clinicals 12-15 hours per week for clinicals. **Corequisite:** AHP 805, Phlebotomy Technician Theory. **Professional Practice insurance fee is included in tuition.**

Course **AHP 806.** Equivalent to WECM course PLAB 1060.

| | | | |
|-------|---|------------------------|------------------|
| 18811 | Mon Wed lab 5 to 8pm | Sep 3 to Dec 19 | Rio Grande J-731 |
| | Mon to Sat clinical times and dates TBA | | Private facility |
| 18812 | Tue Thu lab 5 to 8pm | Sep 2 to Dec 19 | Rio Grande J-731 |
| | Mon to Sat clinical times and dates TBA | | Private facility |

Journey to Wellness / Fitness

Psychic Development Level I. / \$ 67 / 6 hrs

Awaken your spiritual senses through Psychic Development for Beginners. Strengthen your intuition and receive messages through your senses to bring through divine wisdom and guidance for others and for personal enlightenment and growth.

Course **AHW 207.**

| | | | |
|-------|----------------------|--------------------|----------------------|
| 18853 | Mon and Wed 6 to 8pm | Oct 6 to 13 | Admin Svcs Ctr B-321 |
|-------|----------------------|--------------------|----------------------|

Psychic Development Level II. / \$ 67 / 6 hrs

A continuation of Psychic Development. Fine tune and develop psychic senses using tools and practices that assist in connection and channeling. Students will learn how to differentiate between their own thoughts and psychic information.

Course **AHW 208.**

| | | | |
|-------|----------------------|---------------------|----------------------|
| 18854 | Mon and Wed 6 to 8pm | Oct 20 to 27 | Admin Svcs Ctr B-321 |
|-------|----------------------|---------------------|----------------------|

Setting Boundaries and Assertive Communication. / \$ 36 / 2 hrs

A practical workshop designed to help participants express their needs clearly and confidently, without guilt, handle difficult conversations while respecting others, and maintain healthy relationships.

Course **AHW 211.**

| | | | |
|-------|--------------|---------------|----------------------|
| 19094 | Tue 6 to 8pm | Oct 7 | Admin Svcs Ctr B-321 |
| 19095 | Tue 6 to 8pm | Nov 18 | Rio Grande A-228 |

Stretch and Rest - Yin Yoga. / \$ 100 / 12 hrs

Yin Yoga involves holding passive poses for a long duration of time, which allows it to work deeply into our bodies. This type of yoga targets connective tissues such as ligaments, joints, and bones, as well as the deep fascia networks of the body and the meridians. Yin yoga is in contrast to Yang yoga, which targets the muscles. Instructor is Tracy Searight. **No class Nov 11.**

Course **AHW 112.**

| | | | |
|-------|----------------------|-------------------------|-------------------|
| 18814 | Tue Thu 530 to 630pm | Sep 2 to Oct 9 | Valle Verde G-102 |
| 18815 | Tue Thu 530 to 630pm | Oct 14 to Nov 25 | Valle Verde G-102 |

Summer Bodies. / \$ 100 / 12 hrs

Comprehensive course aimed at achieving fitness and wellness objective ahead of the summer season. Course adopts a holistic framework, integrating physiology, nutrition, and psychological wellbeing to promote lifestyle modification. Students will focus on enhancing body composition with specific emphasis on muscle toning and sculpting. Instructor is Luis Vazquez.

Course AHW 120.

| | | | |
|-------|-------------------------|-------------------------|------------------------|
| 18816 | Sat 8 to 10am | Sep 27 to Nov 1 | Mission Del Paso R-101 |
| 18818 | Mon to Thu 530 to 629pm | Sep 8 to 25 | Transmountain 1403 |
| 18819 | Mon to Thu 530 to 629pm | Sep 29 to Oct 16 | Transmountain 1403 |
| 18820 | Mon to Thu 530 to 629pm | Oct 20 to Nov 6 | Transmountain 1403 |
| 18822 | Mon to Thu 530 to 629pm | Nov 17 to Dec 8 | Transmountain 1403 |

Weightlifting Techniques. / \$ 100 / 12 hrs

A comprehensive course designed for individuals new to weightlifting, providing a solid foundation in proper techniques, safety practices, and effective training strategies. Students will learn foundation concepts, master advanced techniques, develop customized training protocols, and understand safety and injury protection. Instructor is Luis Vazquez.

Course AHW 119.

| | | | |
|-------|-------------------------|-------------------------|--------------------|
| 18823 | Mon to Thu 630 to 730pm | Sep 8 to 25 | Transmountain 1403 |
| 18825 | Mon to Thu 630 to 730pm | Sep 29 to Oct 16 | Transmountain 1403 |
| 18830 | Mon to Thu 630 to 730pm | Oct 20 to Nov 6 | Transmountain 1403 |
| 18831 | Mon to Thu 630 to 730pm | Nov 17 to Dec 8 | Transmountain 1403 |

Belly Dance Fitness. / \$ 100 / 12 hrs

Introduces the fundamentals of belly dancing, providing a new type of fitness routine. Covers belly dance moves emphasizing proper posture and coordination, connecting with the pelvic floor while rooting the body. Instructor is Sonia Flores. **No class Nov 11.**

Course AHW 111.

| | | | |
|-------|--------------------|-------------------------|------------------|
| 18833 | Tue Thu 530 to 7pm | Aug 26 to Sep 18 | Rio Grande J-703 |
| 18833 | Tue Thu 530 to 7pm | Sep 23 to Oct 16 | Rio Grande J-703 |
| 18834 | Tue Thu 530 to 7pm | Oct 21 to Dec 2 | Rio Grande J-703 |

Hatha Yoga. / \$ 100 / 12 hrs

Hatha Yoga releases tension and creates energy. Through yoga, cultivate the natural beauty of your body by attaining a high level of health. Learn the fundamental postures and breathing techniques used in yoga philosophy. Positive side effects include increased vitality, mental stimulation and rejuvenation, body tissue elasticity, and stress and trauma relief. Develop a treatment awareness of the individual as a whole. Find the potential for a lifetime of stress relief, and the emergence of hidden beauty and a more positive attitude. Instructor is Maria Castillo. **No class Nov 11.**

Course AHW 101.

| | | | |
|-------|----------------------|-------------------------|----------------------|
| 18835 | Tue Thu 530 to 630pm | Sep 2 to Oct 9 | Admin Svcs Ctr B-323 |
| 18836 | Tue Thu 530 to 630pm | Oct 14 to Nov 15 | Admin Svcs Ctr B-323 |

Chair Pilates. / \$ 100 / 12 hrs

Pilates is a complete fitness for a higher quality of life. This chair-based, low-impact, safe and comfortable class improves muscles, flexibility, posture, and overall health, and targets key muscle groups to promote alignment and mobility. Enjoy improved balance, reduced joint pain, and an energy boost. Instructor is Maria Castillo.

Course AHW 100.

| | | | |
|-------|----------------------|-------------------------|----------------------|
| 18837 | Mon Wed 530 to 630pm | Sep 3 to Oct 13 | Admin Svcs Ctr B-323 |
| 18838 | Mon Wed 530 to 630pm | Oct 15 to Nov 24 | Admin Svcs Ctr B-323 |



Zumba. / \$ 100 / 12 hrs

Cardio dance workout with a Latin flair -- ditch the workout and join the party! The hottest and most exciting workout sizzling its way across America! Inspired by cumbia, salsa, and merengue music, people are falling in love with the music, easy-to-follow steps and body-benefiting results.

Instructor is Mari Lu Urrieta. **No class Sep 1 and Nov 11.**

Course AHW 103.

| | | | |
|-------|---------------------|-------------------------|----------------------|
| 36099 | Mon to Thu 5 to 6pm | Aug 25 to Sep 15 | Admin Svcs Ctr A-437 |
| 36100 | Mon to Thu 6 to 7pm | Aug 25 to Sep 15 | Online |
| 18839 | Mon to Thu 5 to 6pm | Sep 17 to Oct 27 | Admin Svcs Ctr A-437 |
| 18840 | Mon to Thu 6 to 7pm | Sep 17 to Oct 27 | Online |
| 18841 | Mon to Thu 5 to 6pm | Nov 3 to 24 | Admin Svcs Ctr A-437 |
| 18842 | Mon to Thu 6 to 7pm | Nov 3 to 24 | Online |
| 28210 | Mon to Thu 5 to 6pm | Dec 1 to 19 | Admin Svcs Ctr A-437 |
| 28211 | Mon to Thu 6 to 7pm | Dec 1 to 19 | Online |

Abdominal and Weight Toning. / \$ 100 / 12 hrs

Would you like to lose inches around your waist and see some toning and muscle definition in your arms and abdomen? We will work on the abdomen for the first 30 minutes and weight toning for the second 30 minutes. You will see results within weeks. Wear shorts or comfortable workout clothes. Bring a yoga mat and a pair of 7-pound dumb bell weights to class. Instructor is Sergio Uranga. **No class Sep 1.**

Course AHW 104.

| | | | |
|-------|--------------------|-------------------------|-------------------|
| 18843 | Mon Wed 6 to 655pm | Aug 25 to Oct 6 | Valle Verde G-102 |
| 18844 | Mon Wed 6 to 655pm | Oct 13 to Nov 19 | Valle Verde G-102 |

■ ■ Fitness Kickboxing. / \$ 100 / 12 hrs

Kickboxing develops skills necessary to improve cardiovascular fitness and safety awareness. Traditional kickboxing techniques will be introduced. Wear shorts or workout clothes, and bring a small towel and a water bottle to class. Instructor is Sergio Uranga. **No class Sep 1.**

Course AHW 105.

| | | | |
|-------|------------------|-------------------------|-------------------|
| 18845 | Mon Wed 7 to 8pm | Aug 25 to Oct 6 | Valle Verde G-102 |
| 18846 | Mon Wed 7 to 8pm | Oct 13 to Nov 19 | Valle Verde G-102 |

Martial Art / Kenpo Karate. / \$ 100 / 12 hrs

Develop self-discipline and self-confidence. Covers conditioning, basics, and self defense techniques. By the end of the class students will be leaner, stronger, able to defend in any situation. **Students must wear a black or white karate uniform.** Bring a small towel and a water bottle to class. Instructor is Sergio Uranga.

Course **AHW 106.**

18847 Sat 7 to 830am **Sep 6 to Oct 25** Valle Verde G-102

Golf. / \$ 99 / 6 hrs

Learn the fundamentals of golf and swing like a pro. Designed for all skill levels to improve the swing and lower the score. Class is held at Ascarate Park. **You must pay all park fees and buy your own range balls.** Instructor is PGA Golf professional Mike Smith.

Course **AHW 110.**

18848 Thu 6 to 730pm **Oct 2 to 23** Ascarate Golf Course, 6900 Delta

Weight Training. / \$ 138 / 48 hrs

Presents weight lifting skills and techniques, such as proper sitting, exercise, breathing, spotting, and safety procedures. Reviews the history, terminology, and principles of weight training.

Course **AHW 107.**

Conc 36101 Mon Wed Fri 8 to 850am **Aug 25 to Dec 12** Transmountain 1403

Conc 36102 Mon Wed Fri 9 to 950am **Aug 25 to Dec 12** Valle Verde G-103

Conc 18850 Tue Thu 830 to 950am **Aug 26 to Dec 12** Valle Verde G-103

Conc 18851 Mon Wed 530 to 650pm **Aug 25 to Dec 12** Valle Verde G-103

Conditioning. / \$ 138 / 48 hrs

Helps develop physical fitness such as flexibility, strength, and endurance through participation in calisthenics, aerobics, and jogging.

Course **AHW 108.**

Conc 36103 Mon Wed Fri 10 to 1050am **Aug 25 to Dec 12** Valle Verde G-104

Conc 18852 Tue Thu 1130am to 1250pm **Aug 26 to Dec 12** Valle Verde G-104

Massage Therapy

The 525-hour Massage Therapy Certificate Program prepares students for state licensure through the Texas Department of Licensing and Regulation, emphasizing professionalism and safe practice. Administrative Service Center classes at 9050 Viscount are held in a state-of-the-art massage suite with classrooms, an internship room, and spa facilities. Students learn advanced techniques such as sports, prenatal, and spa massage.

The program admission requirements are

- : High school diploma or GED
- : 10th grade reading level or above
- : Current American Heart Association BLS certification
- : Current First Aid certification
- : Vaccination for meningitis if under 22 years old, and
- : Attendance at an orientation session

Note: BLS Provider and First Aid courses will be scheduled specifically for massage students two weeks before the start of the first massage course.

Financial assistance may be available for individuals who qualify. Complete your Fafsa form, the Free Application for Federal Student Aid, at studentaid.gov/h/apply-for-aid/fafsa (this website was previously known as fafsa.ed.gov) at least 8 weeks before registration.

Weekday Classes : July 2025 to January 2026.

Massage Therapy Fundamentals. / \$ 758 /

125 hrs / 12.5 CEUs

Course **MSSG 1011.**

18263 Mon to Thu 830am to 130pm **Sep 2 to Oct 14** Admin Svcs Ctr B-128

Massage Therapy Fundamentals II. / \$ 532 /

75 hrs / 7.5 CEUs

Course **MSSG 2011.**

18264 Mon Wed 830am to 130pm **Oct 15 to Nov 19** Admin Svc Ctr B-128

Mon to Thu 830am to 130pm **Nov 20 to Nov 26**

Kinesiology. / \$ 328 / 50 hrs / 5.0 CEUs

Course **MSSG 2013.**

35655 Tue Thu 230 to 538pm **Jul 8 to Aug 28** Admin Svcs Ctr B-128

Anatomy and Physiology for Massage. / \$ 532 /

75 hrs / 7.5 CEUs

Course **MSSG 1013.**

18266 Tue Thu 230 to 538pm **Sep 2 to Nov 25** Admin Svcs Ctr B-128

Health and Hygiene. / \$ 125 / 20 hrs / 2.0 CEUs

Course **MSSG 1009.**

35656 Mon to Thu 830am to 130pm **Jul 28 to Jul 31** Admin Svcs Ctr B-128

Hydrotherapy / Therapeutic Modalities. / \$ 125 /

20 hrs / 2.0 CEUs

Course **MSSG 1005.**

35657 Mon Wed 830am to 130pm **Aug 4 to Aug 13** Admin Svcs Ctr B-128

Pathology for Massage. / \$ 276 / 40 hrs / 4.0 CEUs

Course **MSSG 2014.**

35658 Tue Thu 830am to 130pm **Aug 5 to Aug 14** Admin Svcs Ctr B-128

Mon to Thu 830am to 130pm **Aug 18 to Aug 21**

Business Practices and Professional Ethics. / \$ 300 /

45 hrs / 4.5 CEUs

Course **MSSG 1007.**

18267 Tue Thu 830am to 130pm **Oct 16 to Nov 18** Admin Svcs Ctr B-128

Internship Massage Therapy / Therapeutic Massage.

/ \$ 374 / 75 hrs / 7.5 CEUs

Course **MSSG 2086.**

28213 Mon to Thu, Sat times tba **Dec 1 to Jan 15** Admin Svcs Ctr B-141

Weekend Classes : May 2025 to February 2026.

Massage Therapy Fundamentals. / \$ 758 / 125 hrs / 12.5 CEUs

Course **MSSG 1011.**

26967 Sat 830am to 1230pm **May 10 to Sep 21** Admin Svcs Ctr B-128
Sun 9am to 1pm

Health and Hygiene. / \$ 125 / 20 hrs / 2.0 CEUs

Course **MSSG 1009.**

26968 Sat 130 to 530pm **May 10 to Jun 14** Admin Svcs Ctr B-128

Kinesiology. / \$ 328 / 50 hrs / 5.0 CEUs

Course **MSSG 2013.**

26969 Wed 530 to 930pm **May 7 to Jul 30** Admin Svcs Ctr B-128

Massage Therapy Fundamentals II. / \$ 532 / 75 hrs / 7.5 CEUs

Course **MSSG 2011.**

18268 Sat 830am to 1230pm **Sep 21 to Dec 6** Admin Svcs Ctr B-128
Sun 9am to 1pm

Anatomy and Physiology for Massage. / \$ 532 / 75 hrs / 7.5 CEUs

Course **MSSG 1013.**

35927 Wed 530 to 930pm **Aug 6 to Dec 10** Admin Svcs Ctr B-128

Hydrotherapy/Therapeutic Modalities. / \$ 125 / 20 hrs / 2.0 CEUs

Course **MSSG 1005.**

35928 Sat 130 to 530pm **Jun 21 to Jul 26** Admin Svcs Ctr B-128

Pathology for Massage. / \$ 276 / 40 hrs / 4.0 CEUs

Course **MSSG 2014.**

35659 Sat 130 to 530pm **Aug 2 to Oct 11** Admin Svcs Ctr B-128

Business Practices and Professional Ethics. / \$ 300 / 45 hrs / 4.5 CEUs

Course **MSSG 1007.**

18270 Sat 130 to 530pm **Oct 18 to Dec 6** Admin Svcs Ctr B-128
Sat 830am to 1230pm **Dec 13** (and) 130 to 530pm **Dec 20**

Internship Massage Therapy / Therapeutic Massage. / \$ 374 / 75 hrs / 7.5 CEUs

Course **MSSG 2086.**

28214 Mon to Sun, times tba **Jan 6 to Feb 8** Admin Svcs Ctr B-141

Nail Technician

This 624-hour program prepares individuals to join one of the fastest areas of growth in the cosmetology industry -- nail care. This growth has created the need for properly trained and licensed nail technicians. Our program emphasizes specialized training in safety, sanitation, state laws, rules and regulations, nail diseases and disorders, skin and nail care, and work ethics. The curriculum meets the Texas Department of Licensing and Regulations cosmetology guidelines.

The program requires

- : A high school diploma or GED
- : Attendance at an orientation session
- : Vaccination for meningitis if under 22 years old, and
- : A valid US identification card

Call 915 **831-6547** or email cehealthprograms@epcc.edu for more.

Weekday Classes

Orientation to Nail Technology. / \$ 1,435 / 160 hrs / 16.0 CEUs

Course **CSME 1030.**

36183 Mon to Fri 830am to 5pm **Aug 27 to Sep 23** Admin Svcs Ctr B-120

Manicuring and Related Theory. / \$ 1,426.50 / 160 hrs / 16.0 CEUs

Course **CSME 1043.**

19486 Mon to Fri 830am to 5pm **Sep 24 to Oct 21** Admin Svcs Ctr B-120

Nail Enhancements. / \$ 1,015 / 140 hrs / 14.0 CEUs

Course **CSME 2030.**

19487 Mon to Fri 830am to 5pm **Oct 22 to Nov 17** Admin Svcs Ctr B-120
Sat Sun 9am to 3pm

Principles of Nail Technology I. / \$ 812 / 112 hrs / 11.2 CEUs

Course **CSME 1031.**

19488 Mon to Fri 830am to 5pm **Nov 18 to Dec 9** Admin Svcs Ctr B-120
Sat Sun 9am to 3 pm

Preparation for the State Licensing Written Exam. / \$ 377 / 52 hrs / 5.2 CEUs

Course **CSME 2051.**

28198 Mon to Fri 830am to 5pm **Dec 10 to 18** Admin Svcs Ctr B-120
Sat Sun 9am to 3pm

Evening and Weekend Classes

Orientation to Nail Technology. / \$ 1,025 /

160 hrs / 16.0 CEUs

Course **CSME 1030.**35660 Mon Tue Wed 5 to 9pm **Jun 9 to Jul 28** Admin Svcs Ctr B-120
Sat Sun 9am to 3pm**Manicuring and Related Theory.** / \$ 1,025

/ 160 hrs / 16.0 CEUs

Course **CSME 1043.**35661 Mon Tue Wed 5 to 9pm **Jul 29 to Sep 14** Admin Svcs Ctr B-120
Sat Sun 9am to 3pm**Nail Enhancements.** / \$ 897 / 140 hrs / 14.0 CEUsCourse **CSME 2030.**18271 Mon Tue Wed 5 to 9pm **Sep 15 to Oct 26** Admin Svcs Ctr B-120
Sat Sun 9am to 3pm**Principles of Nail Technology I.** / \$ 718 /

112 hrs / 11.2 CEUs

Course **CSME 1031.**18272 Mon Tue Wed 5 to 9pm **Oct 26 to Dec 1** Admin Svcs Ctr B-120
Sat Sun 9am to 3 pm**Preparation for the State Licensing Written Exam.**

/ \$ 333 / 52 hrs / 5.2 CEUs

Course **CSME 2051.**28215 Mon Tue Wed 5 to 9pm **Dec 2 to Dec 16** Admin Svcs Ctr B-120
Sat Sun 9am to 3pm

Law Enforcement

Barry Bogle, Director. Call 915 **831-7118** for more information.

The Law Enforcement Training Academy is an approved training provider for Texas Commission on Law Enforcement and Texas Private Security Bureau. **You must register in person** at the Mission Del Paso Training Academy -- **Day** Academy 8am to 5pm, **Evening** 6 to 10pm.

Texas Peace Officer I. / \$ 800 / 176 hrs / 17.6 CEUs

Basic preparation for new peace officers. Must be taken in conjunction with Texas Peace Officer II, III, IV, and V to satisfy the TCOLE Texas Commission on Law Enforcement approved Texas Peace Officer Training Academy. Course includes fitness and wellness, history of policing, professionalism and ethics, constitutional law, the criminal justice system, Texas criminal laws, civil process, and stress management. **Prerequisites:** Must be at least 20 years of age upon entering the Academy, and must pass a state background check. Other restrictions apply. (This course may be offered only by institutions licensed by TCOLE as a police academy.) You must call the Training Academy at 915 831-7118 for application and pretesting.

Course **CJLE 1006.**18622 Mon to Fri 6 to 10pm **Sep 15 to Nov 14** MDP Academy**Texas Peace Officer II.** / \$ 800 / 176 hrs / 17.6 CEUs

Basic preparation for new peace officers. Must be taken in conjunction with Texas Peace Officer II, III, IV, and V to satisfy the TCOLE Texas Commission on Law Enforcement approved Texas Peace Officer Training Academy. Course includes oral and written communications, use-of-force law and concepts, problem solving, multiculturalism, professionalism in policing approaches, patrol procedures, victims of crime, family violence, MHMR, crowdmanagement, hazmat, racial profiling, asset forfeiture, and TABC controlled substances and dangerous drugs. **Prerequisite:** Successful completion of Texas Peace Officer I. (This course may be offered only by institutions licensed by TCOLE as a police academy.)

Course **CJLE 1012.**18623 Mon to Fri 6 to 10pm **Nov 17 to Dec 6** MDP Academy

Texas Peace Officer III. / \$ 800 / 176 hrs / 17.6 CEUs

Basic preparation for new peace officers. Must be taken in conjunction with Texas Peace Officer II, III, IV, and V to satisfy the TCOLE Texas Commission on Law Enforcement approved Texas Peace Officer Training Academy. Course includes laws involving traffic laws and collision investigations, criminal investigation, ID theft, and SFST. **Prerequisite:** Successful completion of Texas Peace Officer II. (This course may be offered only by institutions licensed by TCOLE as a police academy.)

Course CJLE 1018.

| | | | |
|-------|-----------------------|-----------------|-------------|
| 18624 | Mon to Fri 8am to 5pm | Sep 12 to Oct 3 | MDP Academy |
|-------|-----------------------|-----------------|-------------|

Texas Peace Officer IV. / \$ 1,200 / 176 hrs / 17.6 CEUs

Basic preparation for new peace officers. Must be taken in conjunction with Texas Peace Officer II, III, IV, and V to satisfy the TCOLE Texas Commission on Law Enforcement approved Texas Peace Officer Training Academy. Course includes application of laws directly related to police field work. Requires the development of skills needed of a police officer to include patrolling, police driving, traffic stops, use of force, mechanics of arrest, firearms training, and emergency medical care. Applies the techniques and procedures used by officers to field situations. **Prerequisite:** Successful completion of Texas Peace Officer III. (This course may be offered only by institutions licensed by TCOLE as a police academy.)

Course CJLE 1024.

| | | | |
|-------|-----------------------|----------------|-------------|
| 18625 | Mon to Fri 8am to 5pm | Oct 6 to Nov 7 | MDP Academy |
|-------|-----------------------|----------------|-------------|

Texas Peace Officer V. / \$ 800 / 176 hrs / 17.6 CEUs

This introductory course provides basic preparation for a new peace officer. This course should be taken in conjunction with Texas Peace Officer I, II, III and IV to satisfy the Texas Commission on Law Enforcement (TCOLE) approved Basic Peace Officer Training Academy requirements and to satisfy local needs as determined by the local law enforcement community. The training course includes Police M-4 Patrol Rifle, Police Radar Certification, OC Certification, and Taser Certification. **Prerequisite:** Successful completion of Texas Peace Officer IV. (This course may be offered only by institutions licensed by TCOLE as a police academy.)

Course CJLE 1029.

| | | | |
|-------|-----------------------|------------------|--|
| 18626 | Mon to Fri 8am to 5pm | Nov 10 to Dec 19 | |
|-------|-----------------------|------------------|--|

Security Officer Basic Training II. / \$ 50 /

8 hrs / 0.8 CEUs

For people seeking employment as a non-commissioned, unarmed Texas security officer, in a curriculum established by the Texas DPS Private Security Bureau covering Level II training requirements. **Prerequisite:** Must be at least 18 years of age.

Course SDE 803.

| | | | |
|-------|----------------|--------|-------------|
| 18627 | Mon 8am to 5pm | Sep 8 | MDP Academy |
| 18628 | Mon 8am to 5pm | Sep 22 | MDP Academy |
| 18629 | Mon 8am to 5pm | Oct 13 | MDP Academy |
| 18630 | Mon 8am to 5pm | Nov 17 | MDP Academy |

Security Officer Basic Training III. / \$ 140 /

32 hrs / 3.2 CEUs

For people seeking employment as a commissioned, armed Texas security officer, in a curriculum established by the Texas DPS Private Security Bureau covering Level III training requirements, defensive tactics, and firearms training and qualifications. **Prerequisite:** Level II Certification.

Course SDE 805.

| | | | |
|-------|-----------------------|--------------|-------------|
| 18631 | Tue to Fri 8am to 5pm | Sep 9 to 12 | MDP Academy |
| 18632 | Tue to Fri 8am to 5pm | Sep 23 to 26 | MDP Academy |
| 18633 | Tue to Fri 8am to 5pm | Oct 14 to 17 | MDP Academy |
| 18634 | Tue to Fri 8am to 5pm | Nov 18 to 21 | MDP Academy |

In-Service Firearms Training for Security and Special Officers. / \$ 40 / 8 hrs / 0.8 CEUs

Satisfies the biennial requalifications requirements, plus required updates established by the Texas DPS Private Security Bureau for Level III certification. **Students must present certification card.**

Course SDE 204.

| | | | |
|-------|----------------|--------|-------------|
| 18635 | Wed 8am to 5pm | Sep 24 | MDP Academy |
| 18636 | Wed 8am to 5pm | Oct 29 | MDP Academy |
| 18637 | Wed 8am to 5pm | Nov 26 | MDP Academy |

Civilian Firearms Courses

Barry Bogle, Director. Call 915 831-7122 for more information.

Introduction to Firearms Safety. / \$ 15 / 7 hrs / 0.7 CEUs

Designed to provide the basic knowledge and skills necessary for a gun owner to safely handle firearms. Exposes students to safety at home and on the firing range, teaching laws pertaining to use of force, and developing proficiency with handguns on the firing range. **Prerequisites:** Must be at least 18 years of age. Taught at Mission Del Paso Law Enforcement Academy. Minimum of 14 years of age with parent or guardian enrolled in class.

Course SDE 902.

| | | | |
|-------|----------------|-------|-------------|
| 18638 | Sat 9am to 4pm | Sep 6 | MDP Academy |
| 18639 | Sat 9am to 4pm | Oct 4 | MDP Academy |
| 18640 | Sat 9am to 4pm | Nov 1 | MDP Academy |

Firearms / Range Use. Open entry. / \$ 40 / 8 hrs / 0.8 CEUs

Range times for the general public. **Prerequisite:** weapon and ammunition must be provided by student. Mission Del Paso Law Enforcement Academy. Call 915 831-7118 for extra prerequisite information.

Course SDE 206. Equivalent to WECM course CJLE 1023.

Firearms / Range Use. Open entry. / \$ 60 / 40 hrs / 4.0 CEUs

Range time for the general public. **Prerequisite:** weapon and ammunition must be provided by student. Mission Del Paso Law Enforcement Academy. Call 915 831-7118 for extra prerequisite information.

Course SDE 211.

Civilian Practical Pistol. / \$ 40 / 8 hrs / 0.8 CEUs

The next step up in training from basic firearms proficiency, and not a fundamental class. Student should shoot proficiently. Must already understand the seven fundamentals of shooting and the four safety rules. Includes working on shooting skill, weapon presentation, and getting the gun on target in a practical situation. Should have taken SDE 902, Introduction to Firearms Safety.

Covered topics include

- : Weapons carrying options pros and cons.
- : Practical reloads under crisis conditions
- : Weapons malfunction drills under crisis conditions : fail to feed, fail to fire, stovepipe, double feed
- : Shooting controlled pairs
- : Shooting failure drills and
- : Shooting from cover

Course SDE 310.

| | | | |
|-------|----------------|--------|------------------|
| 18641 | Sat 8am to 5pm | Oct 11 | Mission Del Paso |
|-------|----------------|--------|------------------|



Women's Only Self Defense Course. / \$ 40 / 8 hrs / 0.8 CEUs

Women of all ages can sharpen their situational awareness, attack recognition, attacker discouragement, and avoidance of dangerous encounters. Builds an understanding of the dynamics of an attack and how to respond -- and how and when to deploy OC spray and resist, avoid, and defend themselves.

Covered topics include

- * Understanding situational awareness and pre-encounter cues
- * Using verbal commands and other tools
- * Simple self-defense techniques and escapes
- * Deployment of Sabre pepper spray, and
- * Firearms safety and familiarization

Course SDE 416.

| | | | |
|-------|----------------|--------|------------------|
| 18642 | Sat 9am to 5pm | Nov 15 | Mission Del Paso |
|-------|----------------|--------|------------------|

LTC : License to Carry a Handgun. / \$ 80 / 8 hrs / 0.8 CEUs

Meets or exceeds all instructions and training requirements necessary for students to apply for a License to Carry in Texas. **Prerequisites :**

- 1 **Must be a legal Texas resident** for the six months before you apply
- 2 **Must be at least 21** years of age, or 18 if active military
- 3 **Must be qualified to purchase a handgun** under federal and state law
- 4 **Must not be a fugitive** from justice
- 5 **Must not have been convicted of a felony**, or under deferred adjudication, in the ten years before the date of application
- 6 **Must not be currently charged** with the commission of a Class A or B misdemeanor or equivalent offense
- 7 **Must not have been convicted** in the last five years of a Class A or Class B misdemeanor or equivalent offense
- 8 **Must not be chemically dependent**
- 9 **Must be able to exercise sound judgment** with respect to firearms safety and proper storage
- 10 **Must not be determined to be delinquent in making child support** payments administered or collected by the attorney general
- 11 **Must not be determined to be delinquent in the payment of state or federal taxes**
- 12 **Must not be currently restricted under a protective order**, or subject to a restraining order, affecting the spousal relationship, other than a restricting order affecting property interests
- 13 **Must not make any material misrepresentation**, or fail to disclose any material fact, in application for a state-issued License to Carry Handgun
- 14 **Must have current Texas driver's license** or state identification card
- 15 **Must have Social Security card**
- 16 **Must have a handgun**, whether semi-automatic or revolver, and
- 17 **Must provide a minimum 50 rounds** of standard-only sporting arms ammunition; SAAMI may be used.

Please note :

- 1 **This is not a handgun training and development course.** You need to be sufficiently proficient with your handgun to pass the required qualification course of fire.
- 2 **If you need handgun training**, refer to the monthly course SDE 902, Introduction to Firearms Safety.
- 3 **There are 9mm firearms available** for use at the academy, for a small fee for cleaning and maintenance.
- 4 **You must provide a government-issued ID** (a driver's license, for instance) to check out a firearm for use on the Academy range.

Course SDE 200.

| | | | |
|-------|-------------------|--------------|-------------|
| 18643 | Tue Wed 6 to 10pm | Sep 9 to 10 | MDP Academy |
| 18644 | Tue Wed 6 to 10pm | Oct 14 to 15 | MDP Academy |
| 18645 | Tue Wed 6 to 10pm | Nov 11 to 12 | MDP Academy |
| 18646 | Sat 8am to 5pm | Sep 27 | MDP Academy |
| 18647 | Sat 8am to 5pm | Oct 25 | MDP Academy |
| 18648 | Sat 8am to 5pm | Nov 22 | MDP Academy |

Motorcycle Rider Courses

Director Barry Bogle. For more information, call 915 **831-7005**.

You cannot register for these classes online.



Motorcycle Rider Course. / \$ 300 / 15 hrs

Learn the basic motorcycle skills to safely enjoy this sport. The Texas Department of Licensing and Registration, or TDLR, approved this 15-hour course, which includes classroom instruction and training on the motorcycle. Motorcycles are furnished free of charge. When you finish the course and show your certificate to TDLR, you'll get a class M license, which may entitle you to insurance company discounts. Students aged 15 to 17 must have 32 hours of proven driver education to take this course, and written permission from their parents and instructor. Call 915 831-7005 for dates and times.

Prerequisites

- 1 You must have **the ability to ride a bicycle**.
- 2 You must **complete a 3-hour eCourse and print the certificate** completion before the first class day. An incomplete or failed eCourse is a failure for the entire course. Pick up your packet at LETA.
- 3 The rider must wear a **long sleeve shirt or jacket, long pants** with no holes, **over-ankle boots** (no athletic shoes), **eye protection** and **full-fingered gloves**. Bring a **sack lunch** and **2 bottles of water**.
- 4 Per TDPS rules, **if you arrive late you can't be admitted** to class.
- 5 If you are late to class or fail your eCourse, **you get no refund**.
- 6 You must provide your own Txdot-approved helmet so that all safety protocols are met.

Course **PLE 733**.

| | | | |
|-------|--------------------|---------------------|------------------|
| 18649 | Sat Sun 7am to 5pm | Sep 6 to 7 | MDP Riding Range |
| 18650 | Sat Sun 7am to 5pm | Sep 13 to 14 | MDP Riding Range |
| 18651 | Sat Sun 7am to 5pm | Sep 20 to 21 | MDP Riding Range |
| 18652 | Sat Sun 7am to 5pm | Sep 27 to 28 | MDP Riding Range |
| 18653 | Sat Sun 7am to 5pm | Oct 4 to 5 | MDP Riding Range |
| 18654 | Sat Sun 7am to 5pm | Oct 11 to 12 | MDP Riding Range |
| 18655 | Sat Sun 7am to 5pm | Oct 25 to 26 | MDP Riding Range |
| 18656 | Sat Sun 7am to 5pm | Nov 1 to 2 | MDP Riding Range |
| 18657 | Sat Sun 7am to 5pm | Nov 8 to 9 | MDP Riding Range |
| 18658 | Sat Sun 7am to 5pm | Nov 15 to 16 | MDP Riding Range |
| 18659 | Sat Sun 7am to 5pm | Nov 22 to 23 | MDP Riding Range |
| 18660 | Sat Sun 7am to 5pm | Nov 29 to 30 | MDP Riding Range |

Classes in Spanish

| | | | |
|-------|--------------------|---------------------|------------------|
| 18661 | Sat Sun 7am to 5pm | Oct 18 to 19 | MDP Riding Range |
|-------|--------------------|---------------------|------------------|

Experienced Motorcycle Rider Course. / \$ 125 / 6 hrs

This course provides experienced motorcyclists with additional skills and knowledge which are often lacking in motorcycle accidents, and consists of six hours of hands-on training on the riding range. **Class limited to 8 students.**

Prerequisites

- 1 You must **use your own motorcycle** or a motorcycle borrowed with written permission from the actual owner.
- 2 You must **wear a Txdot-approved helmet** with eye protection, a long sleeve shirt or jacket, long pants, over-the-ankle boots, **NO** athletic shoes, and full-fingered leather gloves.
- 3 You must **show a valid driver's license**, proof of insurance, and vehicle registration, and
- 4 You must **have had six months of active riding**.

Note. Contact the Training Academy at 915 **831-7005** for additional information.

Course **PLE 743**.

| | | | |
|-------|----------------|--------------|-------------------------------|
| 18662 | Sat 7am to 3pm | Sep 7 | Mission Del Paso Riding Range |
| 18663 | Sat 7am to 3pm | Oct 4 | MDP Riding Range |
| 18664 | Sat 7am to 3pm | Nov 1 | MDP Riding Range |

Three-Wheel Motorcycle Rider Course. / \$ 235 / 16 hrs

Learn the basic motorcycle skills necessary to safely enjoy the 3-wheel motorcycle. TDLR, the Texas Department of Licensing and Registration, approved this 16-hour course, which includes classroom instruction and driving training. Three wheel motorcycles are furnished without additional charge. Successful completion qualifies the student to obtain a 3-Wheel bike endorsement from TDLR and may also entitle you to insurance discounts. Students age 15 to 17 must show proof of 32 hours prior driver education training before admission. Parent and instructor written permission is required to take the course, in partnership with Can-Am. Additional classes will be offered as needed. Call 915 **831-7005** for dates and times.

Prerequisites

- 1 You must wear a Txdot-approved helmet, a long-sleeve shirt or jacket, long pants with no holes, over-the-ankle boots, **NO** athletic shoes, eye protection, and full-fingered leather gloves. Bring a sack lunch and two bottles of water.
- 2 Per TDPS rules, if you arrive late you can't be admitted to class.
- 3 If you are late to class or fail your eCourse, you get no refund.

Course **PLE 720**.

| | | | |
|-------|--------------------|--------------|-------------------------------|
| 18665 | Sat Sun 7am to 5pm | Sep 6 | Mission Del Paso Riding Range |
| 18666 | Sat Sun 7am to 5pm | Oct 4 | MDP Riding Range |
| 18667 | Sat Sun 7am to 5pm | Nov 1 | MDP Riding Range |

Personal Enrichment

Leticia Guerra, Director.

Call 915 **831-6689** or **6687** or email irhyanes@epcc.edu or bleyva8@epcc.edu for more information, or go to epcc.edu/academics/continuingeducation to learn more about new course offerings.

You must be **17 years old** to register in Personal Enrichment classes.

Home and Garden

Beginning Sewing. / \$ 130 / 18 hrs

Introduces the basic techniques of clothing construction and fitting. Learning this skill is for people who want to beat the high cost of quality clothing. Students make at least one garment in class, learn basic and commercial pattern fitting and adjustment. No previous knowledge of sewing is necessary.

Students buy their own supplies.

Course **PIA 545.**

18956 Wed 6 to 9pm **Sep 10 to Oct 15** Valle Verde B-152

Intermediate Sewing. / \$ 130 / 18 hrs

Designed to further the sewing skills for those who know how to use the sewing machine and have had some sewing experience. There is some emphasis on time-saving techniques. First class meets for one hour. Bring sewing pattern, fabric, and tools to first class. **Prerequisite:** PIA 545, Beginning Sewing. **No clas Nov 26.**

Course **PIA 558.**

18957 Wed 6 to 9pm **Oct 29 to Dec 10** Valle Verde B-152

Basic American Quilting. / \$ 130 / 18 hrs

This course will teach students to create a simple item. Previous quilting experience is unnecessary, but you should know how to operate a sewing machine and to hand sew. First class meets for one hour. **Students buy their own supplies.**

Course **PIA 786.**

18959 Sat 10am to 1pm **Sep 6 to Oct 11** Valle Verde B-152

Crochet. / \$ 85 / 12 hrs

This course is designed to introduce the student with the skills and techniques involved in the art of crochet. **Students buy their own supplies.**

Course **PIA 902.**

18960 Thu 6 to 8pm **Sep 4 to Oct 9** Valle Verde B-152

Intermediate Crochet. / \$ 125 / 16 hrs

This course is designed to further develop the crochet skills and techniques learned in beginning crochet and give students the confidence to create more complex crochet items. **Students buy their own supplies. No class Nov 27.**

Course **PIA 933.**

18961 Thu 6 to 8pm **Oct 16 to Dec 11** Valle Verde B-152

Home Gardening in El Paso. / \$ 100 / 16 hrs

Student will acquire information and learn techniques that will enable them to become successful gardeners under the challenging conditions posed by the El Paso climate. The course is taught by master gardeners.

Course **PIA 477.**

18962 Sat 1030am to 1230pm **Sep 6 to Oct 25** Valle Verde B-150



Dog Behavior Class. / \$ 103 / 16 hrs

Build a better working relationship with your dog through the use of verbal commands and signals. All dogs should be 6 months and 4 years of age. Requirement: Do not bring dog to the first class, and **do not purchase any equipment before the class starts.** Instructor will explain what equipment is needed at first class. Dog owner must be 17 years of age or older. Certified American Kennel Club Instructor. All dogs must be vaccinated. Provide a contact phone number or email at time of registration. **No class July 5.**

Course **PIA 514.**

18963 Sat 830 to 1030am **Sep 13 to Nov 1** Valle Verde Patio

Embracing Self-Love and Acceptance : A Journey to Personal Empowerment. / \$ 100 / 12 hrs

Explore the foundational concepts of self-love and acceptance with the expertise of a seasoned coach in self-love and relationships. Equip yourself with tools and strategies to cultivate a deep sense of self-acceptance, overcome limiting beliefs, and foster a stronger connection with yourself.

Course **PIA 934.**

18966 Thu 6 to 8pm **Sep 11 to Oct 16** Valle Verde A-2324

Empowering Connections : Relationship Enrichment Course for Couples. / \$ 100 / 12 hrs

Strengthen your relationship with our comprehensive course for couples. Gain practical tools to improve communication, resolve conflicts, and deepen intimacy at any stage of your relationship. Learn from an experienced coach in interactive exercises that foster collaboration and understanding. **No class Nov 27.**

Course **PIA 935.**

18967 Thu 6 to 8pm **Oct 23 to Dec 4** Valle Verde A-2324

Mastering Fashion E-Commerce : Affiliate Programs and Dropshipping Secrets. / \$ 100 / 12 hrs

Discover the secrets to fashion e-commerce in a course on affiliate programs and dropshipping. See advantages and challenges to both models and learn to leverage them for online store success. This course is your key to navigating the intricacies of the ever-evolving world of e-commerce.

Course **PIA 936.**

18968 Wed 6 to 8pm **Sep 10 to Oct 15** Valle Verde A-2324

Creative Arts

Drawing and Sketching for Beginners. / \$ 125 / 15 hrs

Discover the joy of drawing. Teaches drawing basics through studies and still life, quick sketches, and exercise. **Students buy their own supplies.**

Course **PIA 499.**

18969 Mon Wed 530 to 830pm **Sep 8 to 22** Valle Verde B-151

Watercolor Painting Techniques Part I. / \$ 125 / 15 hrs

Introduces watercolor techniques, basic art problem solving, and drawing to new as well as experienced artists. **Prerequisite** : PIA 499, Drawing and Sketching for Beginners. **Students buy their own supplies.**

Course **PIA 498.**

18970 Sat 9am to 12 noon **Sep 27 to Oct 25** Valle Verde B-151

Watercolor Painting Techniques Part II. / \$ 125 / 15 hrs

Introduces watercolor techniques, basic art problem solving, and drawing to new as well as experienced artists. **Prerequisite** : PIA 499, Drawing and Sketching for Beginners. **Students buy their own supplies. No class Nov 29.**

Course **PIA 791.**

18971 Sat 9am to noon **Nov 1 to Dec 6** Valle Verde B-151

Portrait Painting in Oil. / \$ 145 / 15 hrs

Learn the basics of drawing the human face, mixing the colors needed to create a portrait, and how to choose a photo that helps you create mood and portray personality in the portrait. **Students buy their own supplies.**

Course **PIA 506.**

18972 Thu 6 to 9pm **Sep 25 to Oct 23** Admin Svcs Ctr A-2724

Oil Painting Principles and Techniques. / \$ 145 / 15 hrs

This class is designed to help students have a better understanding of how oil color works in order to create a greater visual impact. **Students buy their own supplies. No class Nov 27.**

Course **PIA 493.**

18987 Thu 6 to 9pm **Nov 6 to Dec 11** Admin Svcs Ctr A-2724

Painting with Acrylics I. / \$ 120 / 12 hrs

Follow the instruction into the world of color. Learn the techniques of mixing different hues, applying paint onto the canvas, and achieving aerial perspective. **Students buy their own supplies.**

Course **PIA 724.**

18988 Mon 6 to 8pm **Sep 8 to Oct 13** Valle Verde B-152

Painting with Acrylics II. / \$ 120 / 12 hrs

A continuation of PIA 724, Painting with Acrylics I, that further develops your personal style, improves your color, composition and design skills, and fosters more advanced painting principles and techniques. **Prerequisite** : PIA 724, Painting with Acrylics I. **Students buy their own supplies.**

Course **PIA 928.**

18989 Wed 6 to 8pm **Oct 22 to Nov 26** Admin Svcs Ctr A-2724

Fundamentals of Digital Photography. / \$ 130

/ 16 hrs / 1.6 ceus

Welcome to the basics of digital photography! In this class, you will learn how cameras work, natural and artificial lighting, and composition of photographs, and the ability to unleash your creativity. Anyone from beginners to experienced professionals can participate and learn a variety of photography techniques through practice, and finding your own style. Share the joy of capturing beautiful moments! **Materials needed : Digital camera or mirrorless camera.**

Course **PIA 484.** Equivalent to WECM course PHTC 1004.

18990 Tue Thu 6 to 8pm **Sep 9 to Oct 2** Valle Verde B-180



Intermediate Professional Photography.

/ \$ 130 / 16 hrs

Do you want to gain confidence in your photography ? This class takes your photography to the next level. You can develop your style and professional skills by choosing a photography course that will master the basics of photography required to use a camera. The course will present classes on topics across the spectrum of photography that provide hands-on instruction in the elements, composition, and framing most useful at the advanced photography level. **Materials needed : Digital camera or mirrorless camera.**

Course **PIA 511.**

18992 Tue Thu 6 to 8pm **Oct 7 to 30** Valle Verde B-180

Mastering Photoshop and Lightroom for Photography. / \$ 135 / 20 hrs

This course is for those who want to learn the fundamentals of photo editing and retouching. By learning the basic functions and usage methods of Photoshop and Lightroom, you will learn the techniques to make your photos more attractive. Take your photos to the next level with Photoshop and Lightroom's powerful post-processing technology. The entire course is completed in a computer lab upgraded with the latest equipment.

Materials needed : 4-gigabyte USB flash drive or higher. **No class Nov 11 or Nov 27.**

Course **PIA 487.**

18994 Tue Thu 6 to 8pm **Nov 4 to Dec 11** Valle Verde B-163

How to Build or Upgrade Your PC and Save Money.

/ \$ 70 / 8 hrs

Have you ever thought of building or upgrading your own personal computer? Yes, then this course is made for you. In this course you will learn how to build a new computer or upgrade your existing computer step by step.

Course **PIA 505.**

18996 Wed 6 to 8pm **Oct 1 to 22** Valle Verde AST-120

Exploring the World of 3D Printing. / \$ 120 / 12 hrs

You'll be guided through the 3D printing process, exploring its potential as well as the limitations of this transformative technology. For hobbyist enthusiasts and those wanting to personalize objects, this offers a practical intro to 3D printing, requiring only basic computer skills and minimal prerequisites.

Course **PIA 517.**

18998 Tue Thu 6 to 8pm **Oct 7 to 23** Admin Svcs Ctr B-485

Dance and Music

Latin Dance Made Easier. / \$ 70 / 10 hrs

Learn to dance any Latin dance easier and faster by practicing the five most important principles all good dancers share. You'll learn Timing, Connection, Redirection, Leading and Following, and Turn Preparation with easy-to-learn dance patterns from Salsa, Bachata, Cha-Cha-Cha, and Merengue. **No partner or dance experience required. Please wear tennis shoes.**

Course **PID 428.**

18999 Sat 10am to 12 noon **Sep 6 to Oct 4** Rio Grande J-703

Social Dancing for Everyone. / \$ 70 / 10 hrs

Have fun, music, and dancing in this class! Social dancing is a non-competitive kind of ballroom and Latin dancing. This class is for everyone that wants to dance. Learn practical steps and combinations use in practical settings like weddings, nightclubs, business functions, and informal dance events. **No partner required. Please wear tennis shoes.**

Course **PID 429.**

19001 Sat 1 to 3pm **Sep 6 to Oct 4** Rio Grande J-703

Salsa / Bachata I. / \$ 70 / 10 hrs

Quick and high energy Latin dance, like Salsa, can burn a substantial number of calories and increase blood circulation which is very beneficial to all of us. Bachata is a social dance that will help you with your posture, muscle toning, and coordination. A combination of both will provide you with the best overall health benefits. In this introductory class you will learn to dance Salsa and Bachata with the most popular Latin music in the comfort of your own home. **No partner required. Please wear tennis shoes.**

Course **PID 403.**

19002 Thu 630 to 830pm **Sep 11 to Oct 9** Valle Verde A-1215

Salsa / Bachata II. / \$ 70 / 10 hrs

Continuation of our very popular Salsa / Bachata class. This dance class is designed for anyone who wants to increase their Salsa, Bachata, Cha-Cha-Cha, and Merengue dance skills from beginner to intermediate. In this class you will learn intermediate Salsa, Bachata, Cha-Cha-Cha and Merengue dance patterns, movement redirection, dance synchronization, leading and following techniques, and dance etiquette with the most popular Latin music in a fun-filled environment. **No partner required. Please wear tennis shoes.**

Course **PID 427.**

19003 Sat 1 to 3pm **Oct 18 to Nov 15** Valle Verde A-1215

Two Step and More. / \$ 70 / 10 hrs

Two step dance is a relatively simple dance form to learn. You will be introduced to the Two Step, East Coast Swing, El Paso, Four Corners, Boot Scootin Boogie, Charleston Bump, and related dance steps. Get your dancing shoes on! **No partner required. Please wear tennis shoes.**

Course **PID 410.**

19004 Thu 630 to 830pm **Oct 16 to Nov 13** Valle Verde A-1215

Party Line Dancing. / \$ 70 / 10 hrs

The simplicity of line dancing steps makes them so adaptable that they can be reworked and reused in a variety of different dances and styles. The steps are very basic and are often repeated numerous times in the line dance. Alpine, Cowboy, Arizona Shuffle, Bare Foot, Candida, and Country Cha-Cha are just a few dance steps that will be introduced. **Please wear tennis shoes. No class Nov 11.**

Course **PID 426.**

19005 Tue 630 to 830pm **Oct 14 to Nov 18** Transmountain 1405

■ ■ New / Flamenco for Adults I. / \$ 130 / 16 hrs

This course introduces the fundamentals of flamenco, and emphasizes flexibility, footwork, body alignment, and more. A folk dance that originated in Andalusia in Southern Spain, it is known for its passionate, elegant movements and percussive footwork; the name flamenco comes from fuego, the Spanish word for fire. One of the fiercest and most passionate dances in the world, flamenco is often accompanied by guitar music and singing. Dancers wear brightly colored dresses or frilly underskirts, and often use castanets -- hand-held percussion instruments -- to add to the rhythm of the music.

Course **PID 416.**

19659 Wed 630 to 830pm **Oct 15 to Dec 3** Valle Verde A-1215

New / Folklorico for Adults I. / \$ 70 / 8 hrs

Folklorico is an enchanting and vibrant form of dance that holds great significance in Mexican culture. With its colorful costumes, lively music, and spirited movements, folklorico tells stories of the rich history, traditions, and heritage of Mexico. Since folklorico instruction is often lacking in schools, the course seeks to remedy this by introducing new students to the tradition.

Course **PID 415.**

19660 Sat 10 to 11am **Oct 11 to Dec 6** Rio Grande J-703

Jazz Dance. / \$ 70 / 10 hrs

Learn some basics of the Bob Fosse swing jazz style, along with original choreography from the instructor. **Please wear tennis shoes.**

Course **PID 404.**

19006 Wed 630 to 830pm **Sep 10 to Oct 8** Valle Verde A-1215

Pop Dance. / \$ 70 / 10 hrs

Come together and dance along some of the latest hit songs that get you moving and grooving! **Please wear tennis shoes.**

Course **PID 407.**

19007 Tue 630 to 830pm **Sep 9 to Oct 7** Transmountain 1405



Contemporary Dance. / \$ 80 / 10 hrs

We'll move thru Bartenieff patterns to explore our kinespheres, and learn to express ourselves with tools and techniques from artists such as Jose Limon, Isadora Duncan, Shen Wei, and Paul Taylor! **Please wear tennis shoes.**

Course **PID 412.**

19008 Wed 630 to 830pm **Oct 15 to Nov 12** Transmountain 1405

Argentine Tango for Beginners. / \$ 70 / 10 hrs

Escape into the world of Argentine Tango in this 5-week course designed especially for beginners. You will learn the fundamentals of tango including basic steps to help navigate the dance floor. Students will learn exercises to help improve their dance technique, the basic tango steps, giros (turns), and how to connect with others on the dance floor.

Course **PID 431.**

19019 Wed 6 to 8pm **Sep 3 to Oct 1** Rio Grande J-703

Argentine Tango for Beginners II. / \$ 70 /

Escape into the world of Argentine Tango in this 5-week course designed to help you continue your tango adventure. You will learn to reinforce your tango dancing skills and learn more classic combinations including musicality, tango orchestras, and tango codes as well as a little milonga and vals. At the same time, you will learn exercises to help improve your dance technique and how to connect with others on the dance floor.

Course **PID 432.**

19020 Wed 6 to 8pm **Oct 8 to Nov 5** Rio Grande J-703

Voice Class. / \$ 105 / 16 hrs

Beginning voice study provides experience in using your singing voice. It emphasizes establishing good vocal tone production, breathing exercises, and fundamentals of music theory. Students perform a repertoire of varied styles.

Course **PIM 563.**

19010 Tue 6 to 8pm **Sep 9 to Oct 28** Valle Verde AST-161

Guitar I. / \$ 75 / 13.5 hrs

Have you ever dreamed of sitting by the fire and picking up an old guitar? Take this opportunity to learn the basic chord forms, simple melody lines, and musical notation. Soon you will play songs in folk and rock style.

Guitar required.

Course **PIM 401.**

19013 Sat 9 to 1030am **Sep 20 to Nov 15** Valle Verde A-1126

Guitar II. / \$ 75 / 13.5 hrs

A continuation of Guitar I emphasizing technique, theory, chords, scales and repertory. Offers initial experience in playing the guitar, and establishing good music reading ability and rhythmic orientation. Introduces fundamentals of music theory and key technique. **Guitar required.**

Course **PIM 417.**

19017 Sat 1035am to 1205pm **Sep 20 to Nov 15** Valle Verde A-1126

Piano for Adults I. / \$ 120 / 18 hrs

Beginning piano provides an initial experience in playing the piano. Emphasis is placed on establishing good music-reading ability and rhythmic orientation. Introduces the fundamentals of music, theory, and keyboards.

Course **PIM 400.**

19018 Sat 11am to 2pm **Sep 6 to Oct 11** Valle Verde A-1333

Piano for Adults II. / \$ 120 / 18 hrs

Each student will receive some individual attention and group instruction. Emphasis is placed on forming and maintaining good habits, reinforcement, basic musical theory and rhythmic orientation. **Prerequisite :** PIM 400, Piano for Adults I.

Course **PIM 405.**

19022 Sat 11am to 2pm **Oct 18 to Nov 22** Valle Verde A-1333

Chorus I. / \$ 110 /

Course **PIM 421.**

19032 Tue Thu 1130am to 1250pm **Aug 26 to Dec 13** Valle Verde AST 161

Guitar Ensemble I. / \$ 110 /

Course **PIM 423.**

19033 Tue Thu 10 to 1120am **Aug 26 to Dec 13** Valle Verde AST 161

Orchestra I. / \$ 110 /

Course **PIM 418.**

19034 Mon Wed 1 to 220pm **Aug 26 to Dec 13** Valle Verde AST 161

Concert Band I. / \$ 110 /

Course **PIM 422.**

19042 Tue Thu 10 to 1120am **Aug 26 to Dec 13** Valle Verde AST 161

Culinary Arts

You must be 17 years old to take culinary arts courses at EPCC.

Mediterranean Cuisine. / \$ 158 / 21 hrs

Discover how to prepare Mediterranean dishes that will stimulate your palate. You will explore different ingredients that are used in Mediterranean cuisine. During a seven-week period, you will be able to identify the different flavors and the ingredients that you can use to create a dish. **Students buy their own supplies. No class Nov 11.**

Course **PIE 970.**

| | | | |
|-------|--------------|------------------------|-------------------|
| 19024 | Tue 6 to 9pm | Oct 21 to Dec 9 | Valle Verde B-153 |
|-------|--------------|------------------------|-------------------|

Mexican Cuisine. / \$ 125 / 21 hrs

Authentic Mexican meals that are easily prepared, attractive and tasty. Discover the strategies for saving time, shopping efficiently, and blancing nutrition. **Students buy their own supplies.**

Course **PIE 215.**

| | | | |
|-------|--------------|------------------------|-------------------|
| 19025 | Thu 6 to 9pm | Sep 4 to Oct 16 | Valle Verde B-153 |
|-------|--------------|------------------------|-------------------|

Taste of the Caribbean. / \$ 158 / 21 hrs

Take a trip to the Caribbean through food. Come and learn how to cook authentic foods from different parts of the Caribbean such as Puerto Rico, Cuba, Trinidad, Jamaica, and other places. **Students buy their own supplies.**

Course **PIE 010.**

| | | | |
|-------|--------------|------------------------|-------------------|
| 19075 | Tue 6 to 9pm | Sep 2 to Oct 14 | Valle Verde B-153 |
|-------|--------------|------------------------|-------------------|

Baking from Scratch. / \$ 125 / 21 hrs / 2.1 CEUs

There's nothing like warm, fresh-baked goodies. Learn how to make healthy and delicious cakes, cookies, and breads. **Students buy their own supplies.**

Course **PIE 965.** Equivalent to WECM course PSTR 2000.

| | | | |
|-------|--------------|-------------------------|-------------------|
| 19027 | Wed 6 to 9pm | Sep 10 to Oct 22 | Valle Verde B-153 |
|-------|--------------|-------------------------|-------------------|

Holiday Creative Cooking Cuisine. / \$ 125 /

Discover how to create and prepare delicious dishes to wow your friends and family for the holidays that will not break the bank. From savory entrees, side dishes and desserts, learn how to take the stress from cooking for the holidays and make it fun. Take your classic Thanksgiving and Christmas favorites and learn how to give them an out-of-the-box makeover that will have your guests come back for more. **Students buy their own supplies.**

Course **PIE 0006.**

| | | | |
|-------|--------------|------------------------|-------------------|
| 19661 | Mon 6 to 9pm | Sep 8 to Oct 20 | Valle Verde B-153 |
|-------|--------------|------------------------|-------------------|

Fresh Pasta. / \$ 80 / 12 hrs

This class will study and make several types of fresh pasta using classic and modern techniques. These will include hand-made as well as a machine mixed dough. In addition, the student will be exposed to several types of noodles, including flat (spaghetti and fettuccini) and filled (raviolis). Finally, the class will make sauces and plate presentations with their pastas.

Course **PIE 826.**

| | | | |
|-------|--------------|-------------------------|----------------------|
| 19041 | Mon 6 to 9pm | Oct 27 to Nov 17 | Admin Svcs Ctr B-238 |
|-------|--------------|-------------------------|----------------------|

Beginner's Cake Decorating. / \$ 145 / 20 hrs / 2.0 CEUs

You'll soon be proud of the cakes you decorate! Learn tip designs and how to make royal icing flowers. **Students buy their own supplies.**

Course **PIE 967.** Equivalent to WECM course FCTR 1015.

| | | | |
|-------|--------------------|------------------------|-------------------|
| 19035 | Sat 9am to 12 noon | Sep 6 to Oct 18 | Valle Verde B-153 |
|-------|--------------------|------------------------|-------------------|

Advanced Cake Decorating. / \$ 145 / 20 hrs / 2.0 CEUs

In this course you'll improve the techniques from Level 1. You'll be introduced to fondant cakes and tier cakes, and you'll be learning new ways of how to work with chocolate on your cakes as well. **Students buy their own supplies. Prerequisite:** PIE 967, Beginner's Cake Decorating.

Course **PIE 937.**

| | | | |
|-------|--------------------|------------------------|-------------------|
| 19036 | Sat 9am to 12 noon | Oct 25 to Dec 6 | Valle Verde B-153 |
|-------|--------------------|------------------------|-------------------|

Healthy Meals on a Budget : Culinary Survival Skills.

/ \$ 150 / 21 hrs

This course equips students with practical cooking skills and strategies to maximize the use of pantry staples and other readily available food items. Includes food safety, basic meal prep, creative ways to use underutilized ingredients, and preparing diverse, budget-friendly meals. Participants will also learn about gardening options to supplement nutrition, and strategies for storing meals efficiently and preparing meals for the week ahead. **No class Sep 17.**

Course **PIE 897.**

| | | | |
|-------|--------------|-------------------------|--------------------|
| 19037 | Wed 6 to 9pm | Sep 10 to Oct 29 | Admin Svcs Ctr TBD |
|-------|--------------|-------------------------|--------------------|

New Age Coffee. / \$ 78 / 10 hrs

From classic morning drip to iced lattes, learn the many faces of coffee. Hot or iced, milk substitutes, homemade sweeteners, creamers, caffeine alternatives -- any way you want it at no extra cost. **Students buy their own supplies.**

Course **PIE 005.**

| | | | |
|-------|--------------|-------------------------|-------------------|
| 19038 | Thu 6 to 8pm | Oct 23 to Nov 20 | Valle Verde B-153 |
|-------|--------------|-------------------------|-------------------|

Mixology -- Basic Bartending. / \$ 80 / 12 hrs

Intro to the basics of bartending. You'll gain knowledge of the operations of a bar, the principal distilled beverages, and the major cordials. Emphasis on the proper methodology of mixing and serving cocktails and beverages. Flavored and colored water will substitute for alcohol. **Must be 21 years of age.**

Course **PIE 971.** Equivalent to WECM course RSTO 1010.

| | | | |
|-------|--------------|-------------------------|-------------------|
| 19039 | Wed 6 to 8pm | Oct 29 to Dec 10 | Valle Verde B-153 |
|-------|--------------|-------------------------|-------------------|

Wine Appreciation. / \$ 100 / 12 hrs

Experience wine culture in its natural habitat -- restaurants. Expand your wine knowledge in this exciting informative course. Learn to pair food with wine, try new wines, and explore the culture of wine while dining at some of the finer restaurants in El Paso. First class meets at Wine Attitude. You must cover your own food costs. Class may meet at different locations. Intent of class is to meet at different restaurants. **Must be 21 years of age.**

Course **PIE 402.**

| | | | |
|-------|--------------|-------------------------|--|
| 19040 | Wed 6 to 8pm | Oct 29 to Dec 10 | Wine Attitude, Sunland Park Mall, 2nd floor ste G-06 |
|-------|--------------|-------------------------|--|

EPCC Partnered with ed2go

EPCC in Partnership with ed2go are offering these 6-week, online courses that will teach you professional skills, help you continue your education credit, or allow you to learn new hobbies.

The following are some examples of what is offered:

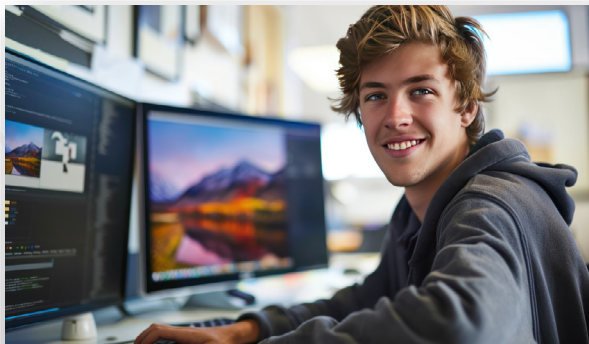
Fundamental Courses 24 Hrs.

Personal Development

- Beginning Writer's Workshop
- Conversational Japanese
- Discover Sign Language
- Introduction to Interior Design
- Leadership
- Speed Spanish
- Personal Finance
- Stocks, Bonds, and Investing: Oh, My!

Young Adult Courses (Ages 17+)

- Blogging & Podcasting for Beginners
- Creating Web Pages
- Drawing for the Absolute Beginner
- GED Preparation
- Grammar Refresher
- Instant Italian
- Mastering Public Speaking
- Mastering Your Digital SLR or Mirrorless Camera



**For many more courses and other pertinent information and details,
please visit the Ed2go Online Catalog at www.ed2go.com/epcc/
or ed2go.support@cengage.com.*

EPCC Employees: Staff Scholarship is available to pay for ED2GO online courses.
Need to reach out to m1erma14@epcc.edu at extension 6682.



Children's College

Melissa Sanchez, Manager. Email msanc201@epcc.edu or call 915 **831-6692** or **6678**.

Children's College is an opportunity for children to take classes in a college environment, and increases their awareness and understanding of a college education. **Note** : Children's courses have an age requirement. Go to epcc.edu/academics/continuingeducation to learn of our newest course offerings.

Academic Enrichment

Spanish for Kids. Grades 3 to 5. / \$ 95 / 12 hrs

Learn to communicate with your Spanish speaking neighbors! Kids learn basic Spanish phrases and words used in daily conversation. An excellent foundation for future language study.

Course **PLD 823**.

18855 Sat 930 to 1130am **Oct 18 to Nov 22** Valle Verde B-100

CSI : Crime Scene Investigation for Children. Ages 8 to 12. / \$ 115 / 16 hrs

Children solve mysteries from clues left at imaginary crime scenes, in the role of investigator interpreting evidence as a team. You'll use the skills of a real CSI: photography, diagrams, fingerprints, shoe impressions, DNA. Includes final mock investigation and tour of EPPD Headquarters.

Course **PLD 849**.

18856 Sat 11am to 1pm **Sep 27 to Nov 15** Valle Verde B-180

Junior Dog Obedience. Ages 8 to 12. / \$ 70 / 8 hrs

A certified American Kennel Club instructor shows kids how to build better relationships with their dogs by use and acceptance of verbal commands and signals. Don't bring your dog to the first class.

Course **PLD 785**.

18912 Sat 1030 to 1130am **Sep 13 to Nov 1** Valle Verde Patio

Math and Cooking. Grades 3 to 5. / \$ 95 / 12 hrs

The kitchen has wonderful opportunities to help children learn math concepts like fractions, estimation and measuring quantities. Discover healthy foods and reinforce your math skills. **Students buy their own supplies. No class Nov 29.**

Course **PLD 618**.

18915 Sat 1 to 230pm **Oct 18 to Dec 13** Valle Verde B-153

Make Your First Video Game. Ages 8 to 12. / \$ 90 / 10 hrs

Have you ever thought of an idea for a video game which does not exist? Now's your chance to join a class where you'll create an actual game. You'll use an easy-to-learn software to discover the basics of video game design.

Course **PLD 674**.

18911 Sat 9 to 11am **Sep 6 to Oct 4** Valle Verde B-163

Black Rocket

These courses will offer the latest in cutting-edge technology and STEM courses that will enhance the learner's technology experience.

Python Programmers. Ages 11 to 14. / \$ 150 / 12.5 hrs

Want to learn the world's fastest-growing programming language used by Google, Nasa, YouTube, and the CIA? Learn to code in Python to create engaging apps and games. Fun lessons take you step-by-step into programming that lets you challenge friends with content you built from start to finish! Returning students create more advanced projects that build on prior years. Compatible with **Mac, Windows, and Chrome**.

Course **PLD 619**.

18857 Sat 830 to 11am **Sep 6 to Oct 4** Valle Verde B-123

Minecraft Modders. Ages 8 to 14. / \$ 150 / 12.5 hrs /

Customize your own Minecraft world and mod the classic game in this one-of-a-kind class. Learn scripting and logic statements as you create your first mods. You will create a wide variety of new elements, gameplay mechanics, and world-generating mods to change the way you play Minecraft. You must own a Java version of Minecraft to take this class. Tablet, phone, and game console versions of Minecraft are not compatible. Returning students can create more advanced projects that build on previous years. Compatible with **Mac and Windows OS only**.

Course **PLD 611**.

18858 Sat 830 to 11am **Oct 11 to Nov 8** Valle Verde B-123

AI Adventures -- Intro to Machine Learning. Ages 8 to 11. / \$ 150 / 12.5 hrs

Explore the world of AI, or artificial intelligence, to design fully interactive games and experiences using cutting-edge technology. This program combines artificial intelligence with coding to create an unforgettable learning adventure. Students will construct machine learning models that use image and text recognition within block-based coding software to build a portfolio of projects. Student-created projects will be available on a password-protected Black Rocket website to share with friends and family. Students work in pairs or teams for most of the program. **Compatible with Mac, Windows, Chrome OS**.

Course **PLD 676**.

18860 Sat 11am to 130pm **Oct 11 to Nov 8** Valle Verde B-123

Roblox Makers. Ages 8 to 14. / \$ 150 / 12.5 hrs /

Unlock the power of Roblox Studio, the world-creation tool used by real-world Roblox developers! Learn how to build 3D models and create an adventure in your Roblox world. Bring characters to life with unique animations you design. Compatible with **Mac and Windows OS only**.

Course **PLD 640**.

18862 Sat 11am to 130pm **Sep 6 to Oct 4** Valle Verde B-186

Snapology

These courses offer the use of technology, and take an active role in inspiring the next generation of scientists, engineers, and mathematicians through excitement in these concepts at an early age.

Kinder Bots. Grades kindergarten to 2. / \$ 110 / 6 hrs /

Children will begin to explore the world of robotics as they build simple models that teach the fundamentals of robotic design. Whether learning about sensors, building drills and magic wands, or discovering ways that gears and pulleys create movement by building helicopters and robotic dogs, every child is sure to have a great time.

Course **PLD 662.**

18867 Sat 10 to 11am **Oct 4 to Nov 8** Valle Verde B-186

Junior Engineers. Ages 5 to 6. / \$ 110 / 6 hrs /

Young students build fun and simple models using Duplo bricks. By playing with and manipulating the models, they experience pulleys, levers, gears, wheels and axles, while exploring energy, forces, and balance.

Course **PLD 664.**

18868 Sat 9 to 10am **Oct 4 to Nov 8** Valle Verde B-186

Arts

Young Artist Workshop. Ages 6 to 9. / \$ 95 / 12 hrs

Introduces basic drawing using a variety of materials. Learn about contrasting light and shadow, positive space, line and design. **Students buy their own supplies.**

Course **PLD 776.**

18869 Sat 930 to 11am **Sep 27 to Nov 15** Valle Verde A-2724



Watercolor Painting for Kids. Ages 8 to 10.

/ \$ 115 / 12 hrs

Basic techniques in painting with watercolor. Includes demonstration of creating landscape, seascape, and still life. **Students buy their own supplies.**

Course **PLD 587.**

18870 Sat 1130am to 1pm **Sep 27 to Nov 15** Valle Verde A-2724

Young Rembrandts

Cartoon Drawing. Ages 6 to 12. / \$ 99 / 8 hrs /

For kids who need to stay engaged and laughing, our cartooning classes are surely the most fun you can have while learning! This entertaining program combines Young Rembrandts' innovative, hands-on teaching method with light-hearted subject matter that engages children, their sense of humor and their vivid imaginations. Drawings that tell a story also help kids to stay on task, find new solutions to a problem and communicate ideas and concepts through pictures.

Course **PLD 979.**

18871 Sat 1130am to 1230pm **Sep 20 to Nov 8** Valle Verde A-2727

Sports and Fitness

Golf for Children. Ages 8 to 13. / \$ 70 / 6 hrs

Introduces the beginning golfer to the fundamentals of the golf swing and the various aspects of the game. The rules and courtesies of the game are also included. Golf clubs are not required. **Students buy their own range balls.**

Course **PLD 758.**

18894 Sat 1 to 230pm **Oct 4 to 25** Ascarate Golf Course , 6900 Delta

Martial Arts for Young People. Ages 7 to 14. / \$ 70 / 8 hrs

An ancient Chinese martial art, Shaolin Kung Fu, builds self-esteem, providing you with a chance to improve fitness and self-defense awareness.

Course **PLD 880.**

18895 Sat 9 to 10am **Sep 27 to Nov 15** Valle Verde G-102

Advanced Martial Arts for Young People. Ages 7 to 14. / \$ 95 / 12 hrs

This advanced class continues teaching you basic Shaolin Kung Fu. Designed to build positive self-esteem and provide students with an opportunity to develop the skills necessary to improve fitness and self-defense awareness.

Prerequisite : PLD 880, Martial Arts for Young People.

Course **PLD 921.**

18896 Sat 10 to 1130am **Sep 27 to Nov 15** Valle Verde G-102

American Boxing for Kids. Ages 8 to 12.

/ \$ 115 / 12 hrs

American boxing is an international sport referred to as the Sweet Science. Applying this art is as deep as the ocean, chess, and music. This class introduces the real version of the art as you develop not only authentic skills, but confidence, self esteem, and solid physical fitness.

Course **PLD 863.**

18897 Sat 12 noon to 130pm **Sep 20 to Nov 15** Valle Verde G-104

Performing Arts

Pre-Ballet. Ages 5 to 6. / \$ 70 / 8 hrs

'Look, Mommy -- see me dance!' Children who want to dance, but aren't yet ready for Ballet I, will glow with glee as they are introduced to balance and dance skills. **No class Nov 29.**

Course **PLD 746.**

18898 Sat 8 to 9am **Oct 11 to Dec 6** Rio Grande J-703

Ballet I for Children. Ages 7 to 10. / \$ 70 / 8 hrs

Introduces beginning ballet and barre, and emphasizes proper body alignment and flexibility. **No class Nov 29.**

Course **PLD 734.**

18899 Sat 9 to 10am **Oct 11 to Dec 6** Rio Grande J-703

Folklorico for Children. Ages 7 to 10. / \$ 95 / 12 hrs

This introductory course in folklorico dance introduces young dancers to the vibrant world of Mexican folk dances. Students will learn basic steps, movements, and choreography while also exploring the cultural and historical significance of these dances. The course also covers basic folklorico footwork techniques and skirt work.

Course **PLD 848.**

19500 Sat 11am to 1pm **Oct 11 to Nov 15** RG J703

Vocal Studies for Children. Ages 8 to 12. / \$ 115 / 12 hrs /

This introductory voice class for children provides professional and strategic instruction on the proper way to pursue the study of singing as a fine arts craft.

Course **PLD 807.**

18900 Sat 2 to 330pm **Sep 20 to Nov 8** Valle Verde A-1201

Students registered in a piano class **must buy a textbook and headphones.** See course outline.

Piano I for Children. Ages 8 to 12. / \$ 110 / 9 hrs

Provides a positive, enjoyable group experience in the initial approach to playing the piano. Emphasizes establishing good music-reading ability and rhythmic orientation. Introduces the fundamentals of music theory and the keyboard.

Course **PLD 724.**

18901 Sat 9 to 10am **Sep 13 to Nov 8** Valle Verde A-1333

Piano II for Children. Ages 8 to 12. / \$ 110 / 9 hrs

Continue piano studies with individual attention and group instruction, focusing on forming and maintaining good habits, basic musical theory, and rhythmic orientation. **Prerequisite:** PLD 724 , Piano I.

Course **PLD 759.**

18902 Sat 10 to 11am **Sep 13 to Nov 8** Valle Verde A-1333

Guitar for Children. Ages 8 to 12. / \$ 70 / 8 hrs

Learn to play chord forms, simple melody lines and musical notation. For the beginner yearning to strum beyond a few chords. Provides you the basic technical competence for recreational use of the guitar. **Student must have own guitar** -- a classical guitar with nylon strings.

Course **PLD 721.**

18903 Sat 10 to 11am **Sep 13 to Nov 1** Valle Verde A-2117

Guitar for Teens. Ages 13 to 16. / \$ 99 / 12 hrs

Take this opportunity to learn the basic chord forms, simple melody lines and musical notation. Soon you will play songs in folk and rock style. **Student must have own guitar** -- a classical guitar with nylon strings.

Course **PLD 891.**

18904 Sat 11am to 1230pm **Sep 13 to Nov 1** Valle Verde A-2117

Children's / Teen ESL Program

These English as a Second Language courses are for nonnative speakers, and include the vocabulary and reading skills needed for speaking English as a second language.

Los cursos de inglés como segundo idioma son para los estudiantes que no dominan el inglés. La instrucción incluíra vocabulario y habilidades de lectura necesarias para el éxito en la introducción a continuación en los cursos.

ESL I for Children. Inglés como segundo idioma para niños I. Ages/edades 7 to 12. / \$ 93 / 12 hrs

Course / Curso **PLD 977.**

18905 Sat / Sab 9 to 11am **Sep 6 to Oct 11** Valle Verde B-110

ESL I for Teens. Inglés como segundo idioma para adolescentes I. Ages/edades 12 to 16. / \$ 99 / 12 hrs

Course / Curso **PLD 984.**

18906 Sat / Sab 11am to 1pm **Sep 6 to Oct 11** Valle Verde B-101

ESL II for Children. Inglés como segundo idioma para niños II. Ages/edades 7 to 12. / \$ 93 / 12 hrs

Prerequisite / Prerequisito: PLD 977, ESL I for Children / Inglés como segundo idioma para adolescentes.

Course / Curso **PLD 983.**

18907 Sat / Sab 9 to 11am **Oct 18 to Nov 22** Valle Verde B-108

ESL II for Teens. Inglés como segundo idioma para adolescentes II. Ages/edades 12 to 16. / \$ 99 / 12 hrs

Prerequisite / Prerequisito : PLD 984, ESL I for Teens / Inglés como segundo idioma para adolescentes.

Course / Curso **PLD 985.**

18908 Sat / Sab 11am to 1pm **Oct 18 to Nov 22** Valle Verde B-108

ESL III for Children. Inglés como segundo idioma para niños III. Ages/edades 7 to 12. / \$ 105 / 12 hrs

Prerequisite / Prerequisito : PLD 983, ESL II for Children / Inglés como segundo idioma para niños.

Course / Curso **PLD 600.**

18909 Sat / Sab 1 to 3pm **Oct 18 to Nov 22** Valle Verde B-108

Fall Intersession

■ **Coding for Kids.** Entering Grades 4 to 8. / \$ 90 / 10 hrs

Technology has a language. It's called code and we believe coding is an essential skill. Exploring fundamental coding concepts and practice thinking like coders using visual-based apps. Discovering how to code will help you solve problems and work together in creative ways. It will also help you build apps that bring your ideas to life.

Course **PLD 673.**

18910 Mon to Fri 9 to 11am **Oct 6 to 10** Valle Verde B-163

Senior Adult Program

Blayne Primozych, AVP.

Email ngonza55@epcc.edu or call 915 **831-7804** for more information.

El Paso Community College provides a wide variety of free classes for people 55 years of age and over. **Seniors must register to attend classes.** When registering, show proof of age with driver's license, birth certificate, or other documents. Classes are held at community locations such as city-county senior, nutrition, adult day care, and recreation centers; elderly housing complexes and retirement apartments; and all five EPCC campuses.

Online registration is available for returning students. Standard registration procedures apply for courses outside the Senior Adult Program.

Go to epcc.edu for a step-by-step online Registration Guide, or find the information in the back of this Continuing Education schedule.

Arts

Watercolors for Seniors. / free / 24 hrs

Introduces students to basic techniques in painting with watercolor. This is a beginners level class taught online; students will learn from the comfort of their homes. Instructions will include a step-by-step demonstration for creating landscape in different seasons, seascape, and still life. **Students buy their own supplies.**

Course **SAP 314.**

18668 Tue Fri 10am to 12 noon **Sep 9 to Oct 17** Online



Acrylic Painting for Seniors. / free / 24 hrs

This course exposes students to necessary tools and materials to set up a layout for painting, apply techniques to different parts of a painting, mix colors, apply paint, and visualize perspectives. **Students buy their own supplies.**

Course **SAP 446.**

18669 Mon Wed 1 to 3pm **Sep 8 to Oct 15** Online

18670 Thu 12 noon to 3pm **Sep 11 to Oct 30** Eastside Sr Ctr

China Painting. / free / 24 hrs

Introduces students to the basic techniques of china painting. Students apply paint on porcelain materials and use firing techniques to fix the colors desired. **Students buy their own supplies.**

Course **SAP 445.**

18671 Wed 9am to 12 noon **Sep 10 to Oct 29** David Ortiz Sr Ctr

Junior Engineers. Ages 5 to 6. / \$ 110 / 6 hrs /

Young students build fun and simple models using Duplo bricks. By playing with and manipulating the models, they experience pulleys, levers, gears, wheels and axles while exploring energy, forces, and balance.

Course **PLD 664.**

18916 Mon to Thu 9 to 1030am **Oct 6 to 9** Mission Del Paso B-107

RoboPets. Entering grades kindergarten to 2. / \$ 110 / 6 hrs

Children will begin to explore the world of robotics as they build moving animals that teach the fundamentals of robotic design. Whether learning about animal habitats, discovering ways that gears and pulleys create movement, and building dancing birds and robotic dogs, your child is sure to have a great time.

Course **PLD 661.**

18917 Mon to Thu 1030am to 12noon **Oct 6 to 9** Mission Del Paso B-107

Acrylic Painting for Kids. Ages 9 to 11. / \$ 75 / 8 hrs

The students will learn simple techniques in basic sketching to paint animals, flowers, still life, and a landscape, and will use art brushes and acrylic paint on a stretched canvas. We will finish a work of art in each class and recognize the different kinds of art. **Students buy their own supplies.**

Course **PLD 691.**

18913 Tue Fri 3 to 5pm **Sep 30 to Oct 10** Valle Verde B-151

■ ■ Chefs in the Kitchen. Ages 10 to 12. / \$ 125 / 20 hrs

Students learn basic cooking skills, preparing new recipes and several favorites from past years. These recipes are great for kids and can be safely made with little help from adults. All recipes are EASY and FUN for kids to make at home too! **Students buy their own supplies.**

Note : Children with food allergies should not take this course.

Course **PLD 665.**

18914 Mon to Fri 1 to 5pm **Oct 6 to 10** Valle Verde B-153

Cooking

Christmas Treats Family Fun! Ages 6 to 8. / \$ 30 / 4 hrs

Light up this Christmas season with these merry making cookies and treat recipes. Come and spread more holiday cheer with your family and friends. **Students buy their own supplies.**

Course **PLD 945.**

28216 Sat 9am to 1pm One day only, **Dec 13** Valle Verde B-153

Drawing II. / free / 24 hrs

Student will develop individual artworks and experiment with a variety of supports, papers, surfaces, and materials. Students will use pencil, charcoal, and Micron pen; mixed media is encouraged. This course is for students with an interest in expanding their experience in drawing. **Students buy their own supplies. No class Oct 3.**

Course **SAP 117.**

| | | | |
|-------|--------------------|------------------------|----------------------|
| 18672 | Fri 9am to 12 noon | Sep 12 to Nov 7 | Admin Svcs Ctr B-321 |
|-------|--------------------|------------------------|----------------------|

Crochet for Beginners. / free / 24 hrs

This class is designed to teach seniors the art of crochet from home. Students will learn a variety of hand techniques, pattern reading and hands-on practice. Students buy their own supplies. **No class Nov 29.**

Course **SAP 501.**

| | | | |
|-------|---------------|------------------------|----------------------|
| 18673 | Sat 9 to 11am | Sep 13 to Dec 6 | Admin Svcs Ctr B-321 |
|-------|---------------|------------------------|----------------------|

■ ■ Amigurumi Crochet, Intermediate to Advanced.

/ free / 24 hrs

Discover the whimsical world of Amigurumi, the Japanese art of crocheting three-dimensional stuffed plushies. Students will learn how to construct charming 3D plushies using foundational crochet stitches, and build on those skills to design and assemble detailed, expressive characters. From shaping forms to joining pieces and adding finishing touches, you'll gain the tools needed to confidently complete your own Amigurumi projects.

Course **SAP 125.**

| | | | |
|-------|---------------------|------------------------|------------------------|
| 19541 | Sat 1115am to 115pm | Sep 13 to Dec 6 | Mission Del Paso B-109 |
|-------|---------------------|------------------------|------------------------|

Portrait Painting. / free / 24 hrs

Draw a face in proportion, comprehending color mixing and working with the medium of your choice. Select photographs as reference material and work with oils, acrylics, watercolors, or colored pencils. The instructor works with you individually and collectively with handouts, class discussions, and demonstrations. **Students buy their own supplies. No class Oct 6.**

Course **SAP 493.**

| | | | |
|-------|--------------------|-----------------------|----------------------|
| 18674 | Mon 9am to 12 noon | Sep 8 to Nov 3 | Admin Svcs Ctr B-321 |
|-------|--------------------|-----------------------|----------------------|

Seniors Artistic Welding. / free / 24 hrs

Discover artistic welding techniques and produce a design through guided instruction using layout tools, demonstration, and guided practice. Learn plasma cutting and mig welding for a desired artistic product. **Students buy their own supplies and protective gear. No class Nov 29.**

Course **SAP 305.**

| | | | |
|-------|---------------|------------------------|-----------------|
| 18675 | Sat 8 to 11am | Sep 13 to Nov 1 | Valle Verde ATC |
|-------|---------------|------------------------|-----------------|

Computers

Digital Devices for Smart Seniors. / free / 24 hrs

In this intro course, seniors explore the various digital devices on the market. You'll bring your smart phones, iPads, and electronic notebook devices to class to learn their various uses and functions. **No class Sep 18.**

Course **SAP 615.**

| | | | |
|-------|-------------------------|------------------------|-------------------|
| 19951 | Tue Thu 1130am to 130pm | Sep 9 to Oct 21 | Valle Verde B-123 |
| | Tue Thu 9 to 11am | Sep 9 to Oct 21 | Valle Verde B-123 |

Intro to Computers and Windows. / free / 24 hrs

Teaches the basic instruction to operate a personal computer. Learn how to use Windows, the mouse, screens, menus, and graphics. You'll be introduced to the terminology associated with Windows usage. **No class Nov 28.**

Course **SAP 600.**

| | | | |
|-------|--------------|------------------------|------------------|
| 18677 | Fri 1 to 3pm | Sep 12 to Dec 5 | Rio Grande B-509 |
|-------|--------------|------------------------|------------------|

Keyboarding on the Computer. / free / 24 hrs

Prepares you to use the computer keyboard, emphasizing techniques and training. You'll apply what you learn to complement your ability, as you master the mouse and personal computer.

Course **SAP 903.**

| | | | |
|-------|------------------|------------------------|------------------|
| 18678 | Mon Wed 1 to 3pm | Sep 8 to Oct 15 | Rio Grande B-509 |
|-------|------------------|------------------------|------------------|

Intro to MS Word. / free / 24 hrs

This introduces you to Microsoft Word, which makes professional documents like announcements, letters, resumes, and reports. You must have basic knowledge in using computers, and know how to type. **No class Nov 11 and 29.**

Course **SAP 670.**

| | | | |
|-------|---------------|------------------------|----------------------|
| 18679 | Tue 2 to 4pm | Sep 9 to Dec 2 | Valle Verde B-123 |
| 18680 | Sat 9 to 11am | Sep 13 to Dec 6 | Admin Svcs Ctr B-324 |

MS Excel. / free / 24 hrs

Introduces Microsoft Excel, which creates and manipulates spreadsheets. You'll learn to organize and balance data in an understandable format. **Note :** We suggest you take SAP 600, Intro to Computers and Windows, before taking this class. **No class on Nov 29.**

Course **SAP 630.**

| | | | |
|-------|---------------|------------------------|----------------------|
| 18681 | Sat 9 to 11am | Sep 13 to Dec 6 | Admin Svcs Ctr B-320 |
|-------|---------------|------------------------|----------------------|

Intro to EPCC Technology Services. / 24 hrs

This course provides students with the basic instruction necessary to successfully utilize EPCC Technology Services. **No class Nov 29.**

Course **SAP 901.**

| | | | |
|-------|---------------------|------------------------|----------------------|
| 18682 | Sat 1115am to 115pm | Sep 13 to Dec 6 | Admin Svcs Ctr B-320 |
|-------|---------------------|------------------------|----------------------|

MS PowerPoint. / free / 24 hrs

Introduces you to the program PowerPoint, which creates professional presentations using the Microsoft Office interface. Learn its various tools to create your own slide show. **Note :** We suggest you take SAP 600, Intro to Computers and Windows, before taking this class. **No class Sep 18 and Nov 27.**

Course **SAP 307.**

| | | | |
|-------|--------------|-------------------------|-------------------|
| 18683 | Thu 2 to 4pm | Sep 11 to Dec 11 | Valle Verde B-123 |
|-------|--------------|-------------------------|-------------------|

Seniors Exploring the Internet. / free / 24 hrs

Learn to access the World Wide Web network and become familiar with its many uses and applications. The instructor will help you communicate with people around the world. You must have some computer experience before taking this class. **No class Nov 29.**

Course **SAP 904.**

| | | | |
|-------|-------------------|------------------------|----------------------|
| 18684 | Sat 1105am to 1pm | Sep 13 to Dec 6 | Admin Svcs Ctr B-324 |
|-------|-------------------|------------------------|----------------------|

■ ■ Social Media. / free / 24 hrs

Introduces you to downloading, registering, and using social media platforms like Facebook, Instagram, Twitter, and Snapchat. **No class Nov 29.**

Course **SAP 476.**

| | | | |
|-------|---------------|------------------------|----------------------|
| 18686 | Sat 9 to 11am | Sep 13 to Dec 6 | Admin Svcs Ctr B-580 |
|-------|---------------|------------------------|----------------------|

Dance and Exercise

Ballroom Dance for Seniors. / free / 24 hrs

Teaches ballroom dance techniques and essential steps in dancing the Waltz, Fox Trot, Rhumba, and Jitterbug, to maintain an active, healthy body. Dances learned in class may be used in performance.

Course **SAP 470.**

| | | | |
|-------|--------------------|------------------------|------------------|
| 18687 | Mon Wed 10 to 11am | Sep 8 to Nov 26 | Eastside Rec Ctr |
|-------|--------------------|------------------------|------------------|

Chair Fitness +. / free / 24 hrs

Boosting mental health, and improving heart health, strength, flexibility, and balance, are the objectives of this energy filled, fun and safe chair fitness class. A variety of specific exercises will target the upper and lower body to strengthen and stretch all major muscles. The class goal is to help you achieve your own personal best. **Bring your own home or low-cost equipment:** scarves, face or kitchen towels, a cane, a 1-inch wood dowel, and light-to-moderate handheld weights or stretch bands. **No class Sep 18.**

Course **SAP 123.**

| | | | |
|-------|---------------------|-----------------------|----------------------|
| 18688 | Tue Thu 930 to 11am | Sep 9 to Nov 4 | Admin Svcs Ctr B-322 |
|-------|---------------------|-----------------------|----------------------|

Exercise to Music. / free / 24 hrs

This maintains a regular low-impact program of exercise to music, to help you stay healthy and increase mobility. Positive group interaction and awareness of body movement improve your fitness level.

No class Nov 11 and 27.

Course **SAP 403.**

| | | | |
|-------|-------------------|-----------------------|-----------------------|
| 18689 | Tue Thu 9 to 10am | Sep 9 to Dec 4 | Hilos de Plata Sr Ctr |
|-------|-------------------|-----------------------|-----------------------|

Zumba Gold. / free / 24 hrs

Zumba Gold is perfect for active older adults who are looking for a modified Zumba class that recreates the original moves at a lower intensity. The routine is made up of simple, easy-to-follow movements, led by an instructor who creates a party-like fun atmosphere. Come join the party and have a blast at oldies, salsa, cha-cha, and more.

Course **SAP 301.**

| | | | |
|-------|----------------------|------------------------|--------------------|
| 18690 | Mon Wed 11am to 12pm | Sep 8 to Nov 26 | Transmountain 1405 |
|-------|----------------------|------------------------|--------------------|

Folklorico at 55. / free / 24 hrs

Offers seniors a low-impact dance program, familiarizing you with unique dances from various regions of Mexico. You'll learn about the customs, history of fandango dances, costumes, steps, techniques, and choreography that are traditional to each region of Mexico. **No class Nov 11.**

Course **SAP 430.**

| | | | |
|-------|----------------------|-----------------------|-----------------------|
| 18691 | Tue 1015am to 1215pm | Sep 9 to Dec 2 | Hilos de Plata Sr Ctr |
|-------|----------------------|-----------------------|-----------------------|

Gentle Way Yoga. / free / 24 hrs

Yoga improves heart health through the mind, body and spirit, as well as flexibility, strength and concentration. Learn deep breathing, meditation, and relaxation techniques using chairs and assistive props. **No class Nov 29.**

Course **SAP 109.**

| | | | |
|-------|------------------|------------------------|--------|
| 18692 | Sat 10am to 12pm | Sep 13 to Dec 6 | Online |
|-------|------------------|------------------------|--------|

Latin Dance. / free / 24 hrs

Seniors learn dance floor techniques using popular Latin rhythms, adding smooth body movements, steps, and choreographed performance displays. Partners are recommended but not required. **No class Nov 28.**

Course **SAP 303.**

| | | | |
|-------|------------------|------------------------|------------------|
| 18693 | Fri 10am to 12pm | Sep 12 to Dec 5 | Happiness Sr Ctr |
|-------|------------------|------------------------|------------------|

Line Dance. / free / 24 hrs

Introduces older adults to popular and traditional individual line dancing, including country, Latin, and other rhythms offering both fun and exercise.

Course **SAP 455. / Beginners.** No class Nov 11 and 27.

| | | | |
|-------|-------------------|-----------------------|--------------------|
| 18694 | Tue 930 to 1130am | Sep 9 to Dec 2 | Transmountain 1405 |
|-------|-------------------|-----------------------|--------------------|

| | | | |
|-------|--------------|-----------------------|---------------------|
| 18695 | Tue 2 to 4pm | Sep 9 to Dec 2 | David Ortiz Rec Ctr |
|-------|--------------|-----------------------|---------------------|

| | | | |
|-------|------------------|------------------------|------------------|
| 18696 | Mon 545 to 745pm | Sep 9 to Nov 24 | Galatzan Rec Ctr |
|-------|------------------|------------------------|------------------|

| | | | |
|-------|--------------------|------------------------|-----------------|
| 18697 | Tue 1030 to 1130am | Sep 11 to Dec 4 | Eastside Sr Ctr |
|-------|--------------------|------------------------|-----------------|

Course **SAP 455. / Intermediate.** No class Nov 11 and 27.

| | | | |
|-------|----------------------|-----------------------|-----------------|
| 18698 | Tue 1030am to 1230pm | Sep 9 to Dec 2 | Eastside Sr Ctr |
|-------|----------------------|-----------------------|-----------------|

| | | | |
|-------|------------------|------------------------|------------------|
| 18699 | Mon Wed 1 to 2pm | Sep 8 to Nov 26 | Eastside Rec Ctr |
|-------|------------------|------------------------|------------------|

| | | | |
|-------|-----------------------|-----------------------|-----------------|
| 18700 | Tue Thu 1230 to 130pm | Sep 9 to Dec 4 | San Juan Sr Ctr |
|-------|-----------------------|-----------------------|-----------------|

| | | | |
|-------|------------------|-----------------------|---------------------|
| 18701 | Tue Thu 2 to 3pm | Sep 9 to Dec 4 | Polly Harris Sr Ctr |
|-------|------------------|-----------------------|---------------------|

Course **SAP 455. / Advanced.** No class Nov 11 and 27.

| | | | |
|-------|-------------------|-----------------------|--------------------|
| 18702 | Tue Thu 12 to 1pm | Sep 9 to Dec 4 | Sylvia Carreon Ctr |
|-------|-------------------|-----------------------|--------------------|

Call 915 **831-7801** or **831-7804** for class information.

Mexican Folk Dance. / free / 24 hrs

Course is designed to introduce students to the music, dance steps, choreography and complete dances from the States of Jalisco and Chiapas. Students will also learn about the background of traditional costumes common to each region and stage projection to highlight the cultural meaning.

Course **SAP 431.**

| | | | |
|-------|--------------------|------------------------|---------------------|
| 18703 | Tue Thu 6 to 730pm | Sep 9 to Oct 30 | Valle Bajo Comm Ctr |
|-------|--------------------|------------------------|---------------------|

Qi Gong. / free / 24 hrs

You'll be introduced to the 12 stretching forms of Qi Gong, a mind-body-spirit practice that improves your mental and physical health, integrating posture movements, breathing techniques, self massage, sound, and focused intent. **No class Nov 29 and 30.**

Course **SAP 302.**

| | | | |
|-------|----------------------|------------------------|--------|
| 18704 | Sat Sun 715 to 815pm | Sep 13 to Dec 7 | Online |
|-------|----------------------|------------------------|--------|

■ Tai Chi for Seniors. / free / 24 hrs

Tai Chi -- slow, controlled movement and breathing techniques -- improves health, fitness level, ability to focus, balance, flexibility, coordination, stamina, strength, body posture, power, and endurance. Exercises emphasize a calm and peaceful mind. **No class Nov 29 and 30.**

Course **SAP 300.**

18705 Sat Sun 6 to 7pm **Sep 13 to Dec 7** Online

Languages

■ Conversational Spanish for Beginners. / free / 24 hrs

Designed for senior adults who have minimal command of the Spanish language. This self-paced program focuses on learning the language with other students.

Course **SAP 415.**

18706 Wed 10am to 12pm **Sep 10 to Nov 26** Northwest C-212

ESL English as a Second Language. / free / 24 hrs

(Este curso de inglés está diseñado para adultos mayores con un dominio mínimo del idioma inglés. El curso básico tiene un tono motivacional y desarrolla su confianza en sí mismo para hablar el idioma inglés.)

This course is designed for older adults with minimal command of English. The basic course has a motivational tone and develops your self-confidence in speaking English. **No class Nov 28.**

Course **SAP 425.**

18707 Fri 10am to 12pm **Sep 8 to Oct 15** Admin Svcs Ctr B-322

18708 Tue and Thu 10am to 12 noon **Sep 9 to Oct 16** Sylvia Carreon Ctr

Music

Chorus. / free / 24 hrs

Offers group singing of songs in Spanish, creating a harmony of voices. Learn basic knowledge of the notes that highlight your musical abilities. **No class Nov 11.**

Course **SAP 435.**

18709 Tue 11am to 1pm **Sep 9 to Dec 2** G Del Palacio Rec Ctr

Guitar for Beginners. / free / 24 hrs

Learn the fundamentals of guitar playing, and new techniques of hand coordination in playing popular Mexican and American songs, basic rhythms, melodies, and chords. **Bring your own guitar. No class Nov 28.**

Course **SAP 420.**

18710 Fri 10am to 12pm **Sep 12 to Dec 5** G Del Palacio Rec Ctr

Intermediate Guitar Rondalla. / free / 24 hrs

Lets you play guitar in a Rondalla-style playing and singing group, performing popular Mexican and American songs, and applying rhythm, guitar chords, and chorus techniques. **Must know how to play guitar.**

Course **SAP 486.**

18711 Mon 10am to 1pm **Sep 8 to Oct 27** San Juan Sr Ctr

Mariachi Course for Seniors. / free / 24 hrs

This course introduces advanced music students to techniques used in interpreting mariachi music from the regions in Mexico. Previous musical experience and proficiency with instrument required. Includes performances for special community events. **Must know how to play guitar, trumpet, or violin. No class Nov 29.**

Course **SAP 421.**

35540 Sat 11 to 1pm **Sep 13 to Dec 6** G Del Palacio Rec Ctr

Personal Enrichment

Expressions of Life. / free / 24 hrs

Expressions of Life is a course that engages adults 55 years and older in a process of documenting their lives using storytelling, visual arts, music, and creative writing. Covers themes such as country of origin, language, work ethic, food, traditions, and community celebration to focus group discussions and artistic projects. **No class Nov 11.**

Course **SAP 399.**

18713 Tue 3 to 5pm **Sep 9 to Dec 2** Admin Svcs Ctr B-321

Beautifying Lives Through Makeup. / free / 24 hrs

This course helps students master important techniques in how to do their own makeup professionally. The student will learn to create contemporary looks for their everyday glamour. After completing this course, the student will be able to enhance their own or other women's beautiful features, disguise minor faults in one's appearance, and express themselves creatively.

Course **SAP 313.**

18714 Wed 10am to 12 noon **Sep 10 to Nov 26** Admin Svcs Ctr B-321

Fashion Hair and Makeup. / free / 24 hrs

This course introduces students to basic hair care, nail care, accessories, wigs, and extension applications. The latest fashion trends and styles are discussed, to help students attend to their care and feel their best. Students will explore fashion styles, accessories, and hair options that complement their personalities while learning in a judgment-free environment. Join this amazing class and feel more confident and beautiful. **Students buy their own supplies. No class on Nov 11.**

Course **SAP 119.**

18715 Tue 10am to 12 noon **Sep 9 to Dec 2** Admin Svcs Ctr B-321

Getting Older Does Not Have to be Hard. / 24 hrs

This class provides information and insight on topics to assist older adults and caregivers in preparing for services for their safety and wellbeing. Life in general can throw us a curve ball but with preparation and knowledge, any of life's obstacles can be managed with ease. General topics presented are caregiving, getting your life organized, six domains of well-being, having a positive attitude, legal matters and so much more. **No class Nov 29.**

Course **SAP 116.**

18716 Sat 9 to 11am **Sep 13 to Dec 6** Admin Svcs Ctr B-322

Wellness

Complementary and Alternative Therapies.

/ free / 24 hrs

This course will explain the concepts of complementary, alternative, and integrative medicine, including aromatherapy, ayurveda, traditional Chinese medicine, homeopathy, curanderismo herbal medicine, integrative and functional medicine, preventive nutrition, and natural supplements against oxidative stress as we age.

Course **SAP 310.**

18717 Mon Wed 530 to 730pm **Sep 8 to Oct 15** Transmountain 1124

Gardening for Healthy Living. / free / 24 hrs

This course is designed to teach seniors containerized gardening for the home. Students will cultivate a variety of interior plants from preparing the soil to planting the seed, watering, and growing healthy plants. **Students buy their own supplies. No class Nov 11.**

Course **SAP 106.**

18718 Tue 230 to 430pm **Sep 9 to Dec 2** Sylvia Carreon Ctr

Intro to Mind-Body Medicine. / free / 24 hrs

This course introduces participants to know the different modalities with the broad range of Mind-Body medicine. Participants learn different mind-body modalities for stress reduction, their benefit for improving overall health, and healing from and/or preventing diseases. **No class Sep 18 and 27.**

Course **SAP 426.**

18719 Thu 2 to 4pm **Sep 11 to Dec 11** Admin Svcs Ctr B-322

Herbal Medicine. / free / 24 hrs

This course will answer questions about a variety of herbs, their differences, and their healing properties, and cover a plethora of herbs and supplements, including medicinal herbs used in our border area.

Course **SAP 311.**

18720 Tue Thu 530 to 730pm **Sep 9 to Oct 16** Transmountain 1125

Healthy Nutrition for Seniors. / free / 24 hrs

This course introduces older adults to the process of healthy meal planning menus and food preparation, which reduces health risks and fosters healthy nutrition. You'll work with the instructor as a team to prep, cook, and taste the menu assignments in class. Class lectures include traditional food preparation and optional tasty substitutes. **Students buy their own supplies.**

Course **SAP 251.**

18721 Mon Wed 8 to 10am **Sep 8 to Oct 15** Valle Verde B-153

Meditation for Tranquility. / free / 24 hrs

Meditation is a mind - body practice with a long history of increasing calmness and physical relaxation, improving psychological balance, coping with illness, and enhancing overall health and well being. These practices focus on the interactions among the brain, mind, body, and behavior, to learn to meditate and explore the different forms and techniques used in various traditions. **No class Nov 11 and 27.**

Course **SAP 428.**

18722 Tue Thu 6 to 7pm **Sep 9 to Dec 4** Online

Senior Centers

Eastside Regional Recreation Center, the Beast

915 **212-0580** / 13501 Jason Crandall Dr, El Paso 79938

Eastside Senior Center

915 **212-2070** / 3200 Fierro Dr, El Paso 79935

Galatzan Recreation Center

915 **212-0734** / 650 Wallenberg Dr, El Paso 79912

Gary Del Palacio Recreation Center

915 **212-0560** / 3001 Parkwood St, El Paso 79925

Happiness Senior Center

915 **212-0435** / 563 N Carolina Dr, El Paso 79915

Hilos De Plata Senior Center

915 **212-0410** / 4451 Delta Dr, El Paso 79905

Multipurpose Recreation Center

915 **212-2295** / 9031 Viscount Blvd, El Paso 79925

Officer David Ortiz Recreation Center

915 **212-0430** / 563 N Carolina Dr, El Paso 79915

Polly Harris Senior Center

915 **212-0733** / 650 Wallenberg Dr, El Paso 79912

San Juan Senior Center

915 **212-0486** / 5701 Tamburo Ct, El Paso 79905

Sylvia A Carreon Community Center

915 **212-0788** / 709 Lomita Dr, El Paso 79907

Valle Vajo Community Center

915 **212-0784** / 7380 Alameda, El Paso 79915

South El Paso Senior Center

915 **212-0574** / 600 Ochoa St, El Paso 79901

EPCC campus locations

Administrative Services Center ASC, EPCC

915 **831-3722** / 9050 Viscount Blvd, El Paso 79925

Fort Bliss FT campus of EPCC

915 **831-5511** / 641 Taylor Rd, RM10, Fort Bliss 79916

Mission Del Paso MDP campus of EPCC

915 **831-3722** / 10700 Gateway East, El Paso 79927

Northwest NW campus of EPCC

915 **831-3722** / 6701 South Desert Rd, El Paso 79932

Rio Grande RG campus of EPCC

915 **831-3722** / 100 W Rio Grande Ave, El Paso 79902

Transmountain TM campus of EPCC

915 **831-3722** / 9570 Gateway Blvd N, El Paso 79924

Valle Verde VV campus of EPCC

915 **831-3722** / 919 Hunter Dr, El Paso 79915



Fall 2025 Series starts:
Tuesday, October 21
Wednesday, October 22
Thursday, October 23
12:00pm – 2:00pm
LIVE WEBINAR

INTRODUCTION to QUICKBOOKS ONLINE

Tuesday, October 21, 2025

Introduction and Setup

Wednesday, October 22, 2025

Transactions and Bank Feed Introduction

Thursday, October 23, 2025

Advanced Features, Reports and Reconciliation

- **Registration Fee: \$175** – includes QuickBooks Online workbooks; 1-hour 1 on 1 session during series; and 1) 1-hour consultation any time after the series. Payment by American Express, Visa, MasterCard, and Discover is accepted. Check or money order payment payable to El Paso Community College. Register on-line at elpasosbdc.net.
Schedule is subject to change.
- **Refunds:** A 100% refund will be processed if notification of drop is received 24 hours before the first-class meeting.
- **Location:** Classes are held online via MicroSoft Teams



Proud Members of the Texas South-West SBDC Network



EL PASO
COMMUNITY
COLLEGE

INTRODUCTION to QUICKBOOKS ONLINE PAYROLL

2-Day Online Series

Wednesday, November 18

Thursday, November 19

12:00pm – 2:00pm

information and registration at
elpasosbdc.net

\$100 Registration Fee
includes: QBO Payroll workbooks,
1-hour consultation during and after series

Limited to 20 Students
Classes will be held on-line
via MicroSoft Teams

El Paso Community College
Small Business Development Center
9050 Viscount Blvd. Bldg. B. - #B520
El Paso, TX 79925



Mastering payroll in **QuickBooks Online Payroll** is essential for businesses to ensure accuracy, compliance, and efficiency in **managing employee wages and taxes.**

Whether you're new to payroll or looking to enhance your skills, this hands-on learning experience will help streamline payroll operations and **ensure accuracy** to keep your business on track.



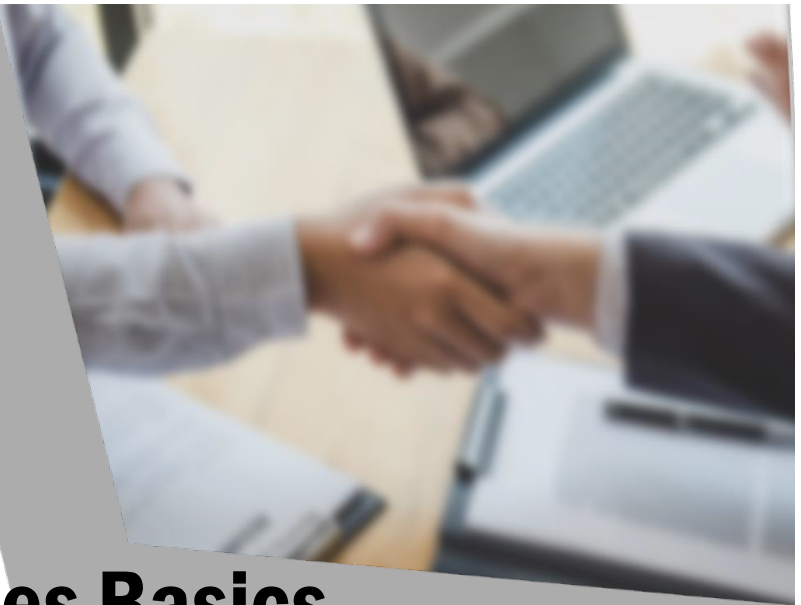
Proud Members of the Texas South-West SBDC Network



Funded in part through the State of Texas and a Cooperative Agreement with the U.S. Small Business Administration. Reasonable accommodations for persons with disabilities or limited English proficiency will be made if requested at least two weeks in advance. Contact the SBDC at (915) 831-7742.



EL PASO
COMMUNITY
COLLEGE



Human Resources Basics and Workforce Development Series for Small Business Owners and Managers

Day 1 - Tuesday, September 16
Recruiting, Hiring, and Onboarding

Day 2 - Thursday, September 18
Documentation Essentials

Day 3 - Tuesday, September 23
Employee (W2) vs. Independent Contractor
(1099)

Day 4 - Thursday, September 25
Navigating I-9 Compliance

Day 5 - Tuesday, September 30
Understanding Unemployment Tax Obligations

Day 6 - Thursday, October 2
Preventing Sexual Harassment in the
Workplace

Registration Fee: \$40 Each Session or \$200 for Entire Series
Limited to 24 Students | Classes will be held IN-PERSON at the SBDC

Funded in part through the State of Texas and a Cooperative Agreement with the U.S. Small Business Administration. Reasonable accommodations for persons with disabilities or limited English proficiency will be made if requested at least two weeks in advance. Contact the SBDC at (915) 831-7742.

INFORMATION | REGISTRATION
ELPASOSBDC.NET

915.831.7742
9050 Viscount Blvd
Bldg. B #B520
El Paso, TX
79925



EPCC is a Proud Member of the Texas South-West SBDC Network

EPCC Language Institute

Lucy Flores, Manager. Email lflore60@epcc.edu or call 915 **831-2154** or 831-2748.

The mission of IEP, the Intensive English Program within the Language Institute, is to prepare students and professionals to acquire English proficiency to meet their personal, academic, and career goals. We are committed to offering classes delivered by highly qualified and competent faculty members in a dynamic and effective environment with the most innovative and supportive of resources.

The intermediate levels of IEP use terminology applicable to technical and business writing, to develop proofreading and editing skills relevant to job-related contexts required for advancement in the labor force. The emphasis is on enhancing effective written and oral communication skills for business applications in the workforce.

Intensive English Program : Fast Track

The program has six levels that can be completed within a year. Each level includes three courses: Reading / Writing, Listening / Speaking, and Grammar. Each has 200 hours of instruction per level.

Intensive English Programs : IEP AM & IEP SAT

The program has 12 levels offered on weekdays or Saturdays. Each level includes three courses: Reading / Writing, Listening / Speaking, and Grammar. Each has 100 hours of instruction per level.

■ ■ Advanced Grammar and Advanced Writing and Conversation. / Online in sync.

Intended for ESL students who already have a solid foundation in the fundamentals of English. The courses are fast-paced for independent-learning, self-motivated and disciplined students who take charge of their learning with many independent-study activities outside class time. **Students must have completed IEP 262 or 162.**

Students must attend class at the assigned time, with their web camera and microphone turned on during class. Basic computer skills and knowledge are required, including the ability to use Microsoft Word, email applications, the Internet, and so forth.

Important information / Información importante

An IEP placement exam is needed to register. Call us to make an appointment for the exam. / **Examen de IEP** es necesario antes de inscribirse en cursos de inglés intensivo. Llama para hacer una cita para el examen.

Fast Track requires registration in two concurrent courses.

You must pay in full when you register, before the first class day; no full refunds for either course on or after the first day of the first class in each Fast Track level. / **Inscripción y pago de Fast Track es requerido en dos cursos simultáneos.** El pago completo es requerido para los dos cursos de cada nivel de Fast Track antes del primer día de clase, no hay reembolso completo para cualquier de los dos cursos en el primer o después del primer día de clases del primer curso.

You must pay in full when you register. Registration for fall begins August 4, 2025. The last day to register is the Friday before the first day of classes, if space is available. / **El pago completo es requerido** al momento de la inscripción. Inscripción para clases del ciclo de otoño inicia el 4 de agosto del 2025. Último día de inscripción es el viernes previo al primer día de clases; si hay cupo.

EPCC's refund policy details appear under General Information in this schedule of classes. / **Requisitos de reembolso :** Información en la Sección General de este horario de clases.

The IEP is full immersion. Only the target language is spoken in class. / **El programa de inglés intensivo es de inmersión total.** Solo se habla el idioma inglés en las clases.

IEP Fast Track. Classes in person. / 200 hrs / 20 CEUs

Cycle I is August 25 to October 10, 2025 Cycle II is October 20 to December 5, 2025

Full payment is required at time of registration.
(**El pago completo** es requerido al momento de la inscripción. Se requiere forma de inscripción del Language Institute para inscribirse.)

A registration referral form from the Language Institute is required to enroll in classes.
(**Se requiere forma de inscripción** del Language Institute para inscribirse.)

No classes Sep 01, Sep 18, Nov 11, Nov 27 and Nov 28, 2025.

Fast Track English I, A and B. / \$ 554

Courses **IEP 211** and **212**.

36061,36062 Mon to Fri 8am to 230pm **Aug 25** to **Oct 10** Valle Verde MV-14
18578,18579 Mon to Fri 8am to 230pm **Oct 20** to **Dec 05** Valle Verde MV-14

Fast Track English II, A and B. / \$ 554

Courses **IEP 221** and **222**.

36063,36064 Mon to Fri 8am to 230pm **Aug 25** to **Oct 10** Valle Verde MV-16
18580,18581 Mon to Fri 8am to 230pm **Oct 20** to **Dec 05** Valle Verde MV-16

Fast Track English III, A and B. / \$ 554

Courses **IEP 231** and **232**. Equivalent to WECM courses COMG 1000, 1001.

36065,36066 Mon to Fri 8am to 230pm **Aug 25** to **Oct 10** Valle Verde MV-17
18582,18583 Mon to Fri 8am to 230pm **Oct 20** to **Dec 05** Valle Verde MV-17

Fast Track English IV, A and B. / \$ 554

Courses **IEP 241** and **242**. Equivalent to WECM courses COMG 1004, 1004.

36067,36068 Mon to Fri 8am to 230pm **Aug 25** to **Oct 10** Valle Verde MV-18
18584,18585 Mon to Fri 8am to 230pm **Oct 20** to **Dec 05** Valle Verde MV-18

Fast Track English V, A and B. / \$ 554

Course **IEP 251** and **252**.

36069,36070 Mon to Fri 8am to 230pm **Aug 25** to **Oct 10** Valle Verde MV-19
18586,18587 Mon to Fri 8am to 230pm **Oct 20** to **Dec 05** Valle Verde MV-19

Fast Track English VI, A & B. / \$ 554

Course **IEP 261** and **262**.

36071,36072 Mon to Fri 8am to 230pm **Aug 25** to **Oct 10** Valle Verde MV-20
18588,18589 Mon to Fri 8am to 230pm **Oct 20** to **Dec 05** Valle Verde MV-20

IEP AM. Classes in person. / 100 hrs / 10 CEUs / Cycle I

Full payment is required at time of registration. / **El pago completo** es requerido al momento de la inscripción. Se requiere forma de inscripción del Language Institute para inscribirse.

A registration referral form from the Language Institute is required to enroll in classes. / **Se requiere forma de inscripción** del Language Institute para inscribirse.



Cycle I. August 25 to October 10, 2025

No classes September 01 and 18, 2025.

Intensive English I-A. / \$ 277

Course **IEP 111**.

36073 Mon to Fri 9 to 1150am **Aug 25** to **Oct 10** Valle Verde MV 15-B

Intensive English II-A. / \$ 277

Course **IEP 121**.

36074 Mon to Fri 9 to 1150am **Aug 25** to **Oct 10** Valle Verde MV 22

Intensive English III-A. / \$ 277

Course **IEP 131**. Equivalent to WECM course COMG 1000.

36075 Mon to Fri 9 to 1150am **Aug 25** to **Oct 10** Valle Verde MV 24

Intensive English III-B. / \$ 277

Course **IEP 132**. Equivalent to WECM course COMG 1001.

36076 Mon to Fri 9 to 1150am **Aug 25** to **Oct 10** Valle Verde MV 29

Intensive English IV-A. / \$ 277

Course **IEP 141**. Equivalent to WECM course COMG 1004.

36077 Mon to Fri 9 to 1150am **Aug 25** to **Oct 10** Valle Verde MV 30-A

Intensive English V-A. / \$ 277

Course **IEP 151**.

36078 Mon to Fri 9 to 1150am **Aug 25** to **Oct 10** Valle Verde MV 31-A

Intensive English VI-A. / \$ 277

Course **IEP 161**.

36079 Mon to Fri 9 to 1150am **Aug 25** to **Oct 10** Valle Verde MV 31-B

Cycle II. October 20 to December 5, 2025

No classes November 11, 27 and 28, 2025.

Intensive English I-A. / \$ 277

Course **IEP 111**.

18590 Mon to Fri 9 to 1150am **Oct 20** to **Dec 05** Valle Verde MV 31-B

Intensive English I-B. / \$ 277

Course **IEP 112**.

19412 Mon to Fri 9 to 1150am **Oct 20** to **Dec 05** Valle Verde MV 15-B

Intensive English II-B. / \$ 277

Course **IEP 122**.

36080 Mon to Fri 9 to 1150am **Oct 20** to **Dec 05** Valle Verde MV 22

Intensive English III-B. / \$ 277

Course **IEP 132.** Equivalent to WECM course COMG 1001.

18592 Mon to Fri 9 to 1150am **Oct 20 to Dec 05** Valle Verde MV 24

Intensive English IV-A. / \$ 277

Course **IEP 141.** Equivalent to WECM course COMG 1004.

18593 Mon to Fri 9 to 1150am **Oct 20 to Dec 05** Valle Verde MV 29

Intensive English IV-B. / \$ 277

Course **IEP 142.** Equivalent to WECM course COMG 1004.

18594 Mon to Fri 9 to 1150am **Oct 20 to Dec 05** Valle Verde MV 30-A

Intensive English V-B. / \$ 277

Course **IEP 152.**

18595 Mon to Fri 9 to 1150am **Oct 20 to Dec 05** Valle Verde MV 30-B

Intensive English VI-B. / \$ 277

Course **IEP 162.**

18596 Mon to Fri 9 to 1150am **Oct 20 to Dec 05** Valle Verde MV 31-A

IEP Saturday. Classes in person.
/ 100 hrs / 10 CEUs / Cycle I

Full payment is required at time of registration. / **El pago completo** es requerido al momento de la inscripción. Se requiere forma de inscripción del Language Institute para inscribirse.

A registration referral form from the Language Institute is required to enroll in classes. / **Se requiere forma de inscripción** del Language Institute para inscribirse.

Cycle I. August 23 to December 6, 2025

No classes November 11, 27 and 28, 2025.

Intensive English I-A. / \$ 277

Course **IEP 111.**

18597 Sat 8am to 305pm **Aug 23 to Dec 6** Valle Verde MV 24

18598 Sat 8am to 305pm **Aug 23 to Dec 6** Valle Verde MV 31-B

Intensive English I-B. / \$ 277

Course **IEP 112.**

18599 Sat 8am to 305pm **Aug 23 to Dec 6** Valle Verde MV 14

18600 Sat 8am to 305pm **Aug 23 to Dec 6** Valle Verde MV 30-A

Intensive English II-A. / \$ 277

Course **IEP 121.**

18601 Sat 8am to 305pm **Aug 23 to Dec 6** Valle Verde MV 16

18602 Sat 8am to 305pm **Aug 23 to Dec 6** Valle Verde MV 30-B

Intensive English II-B. / \$ 277

Course **IEP 122.**

18603 Sat 8am to 305pm **Aug 23 to Dec 6** Valle Verde MV 17

Intensive English III-A. / \$ 277

Course **IEP 131.** Equivalent to WECM course COMG 1000.

18604 Sat 8am to 305pm **Aug 23 to Dec 6** Valle Verde MV 18

Intensive English III-B. / \$ 277

Course **IEP 132.** Equivalent to WECM course COMG 1001.

18605 Sat 8am to 305pm **Aug 23 to Dec 6** Valle Verde MV 19

Intensive English IV-A. / \$ 277

Course **IEP 141.** Equivalent to WECM course COMG 1004.

18606 Sat 8am to 305pm **Aug 23 to Dec 6** Valle Verde MV 25-A

Intensive English IV-B. / \$ 277

Course **IEP 142.** Equivalent to WECM course COMG 1004.

18607 Sat 8am to 305pm **Aug 23 to Dec 6** Valle Verde MV 20

Intensive English V-A. / \$ 277

Course **IEP 151.**

18608 Sat 8am to 305pm **Aug 23 to Dec 6** Valle Verde MV 21

Intensive English VI-B. / \$ 277

Course **IEP 162.**

18609 Sat 8am to 305pm **Aug 23 to Dec 6** Valle Verde MV 22

Conversation ESL Program.

Classes in person. / \$ 150 / 50 hrs / 5 CEUs / Cycle I

The 50-hour Conversation ESL course of study is designed to advance the oral English skills of students in the workplace. These classes aim to improve pronunciation and the use of idiomatic expressions, and emphasize communication and formal presentations.

Full payment is required at time of registration. / **El pago completo** es requerido al momento de la inscripción. Se requiere forma de inscripción del Language Institute para inscribirse.

A registration referral form from the Language Institute is required to enroll in classes. / **Se requiere forma de inscripción** del Language Institute para inscribirse.

Cycle I. August 30 to November 22, 2025

Conversational ESL I. / \$ 150

Course **IEP 501.**

18610 Sat 9 to 1250pm **Aug 30 to Nov 22** Valle Verde MV 29

Conversational ESL II. / \$ 150

Course **IEP 502.**

18611 Sat 9 to 1250pm **Aug 30 to Nov 22** Valle Verde A-2118

Conversational ESL III. / \$ 150

Course **IEP 503.**

18612 Sat 9 to 1250pm **Aug 30 to Nov 22** Valle Verde A-2119

Conversational ESL IV. / \$ 150

Course **IEP 504.**

18613 Sat 9 to 1250pm **Aug 30 to Nov 22** Valle Verde A-2120

Conversational ESL V. / \$ 150

Course **IEP 505.**

18614 Sat 9 to 1250pm **Aug 30 to Nov 22** Valle Verde A-2116

Conversational ESL VI. / \$ 150

Course **IEP 506.**

18615 Sat 9 to 1250pm **Aug 30 to Nov 22** Valle Verde A-2125

Advanced Conversational ESL.

Online in synch. / \$ 150 / 36 hrs / 3.6 ceus

Note : Students must have completed level IEP 262 / 162.

Course **ALP 507.**

Mon Wed 6 to 730pm

Online

CE Language Programs. Online. / \$ 150 / 48 hrs / 4.8 ceus

Learn another language at the EPCC Language Institute. These affordable, non-credit Spanish, German, and French classes are offered under Continuing Education, and are concurrent with credit courses.

Conversational German I. / \$ 150

Course **ALP 056.**

18616 Sat 9 to 1150pm **Aug 30 to Dec 14** Online in synch.

Conversational French I. / \$ 150

Course **ALP 057.**

18619 Sat 9 to 1150pm **Aug 30 to Dec 14** Online in synch.

Conversational French II. / \$ 150

Course **ALP 058.**

18620 **Aug 30 to Dec 14** Online.

Conversational Spanish I.

Beginning Verbal Skills in Career Spanish. / \$ 150

Course **ALP 051.** Equivalent to WECM course FRNL 1001.

18621 Sat 9 to 1150pm **Aug 30 to Dec 14** Online in synch.

Center for Corporate and Workforce Training

Jose CassoLopez, Director. Email ccwt@epcc.edu or call 915 **831-7825** or **7840** for more information on these courses.

Corporate and Workforce Trainings

CCWT develops and delivers up-to-date and convenient innovative and accessible programs to meet the vocational and professional needs of individuals and businesses in the El Paso region. CCWT can customize curriculum that can be delivered on- or off-site to your employees, with flexible schedules.

■ ■ Customs Brokerage. / \$ 75 / 8 hrs / 0.8 CEUs

This course will provide logistics associates with an understanding of how to complete and ensure that import / export documentation for US and Mexico customs is accurate. Provides a foundation of knowledge including protocol, customs, etiquette, verbal and nonverbal communications.

Course **CWT 603.** Equivalent to WECM course IBUS 2001.

18723 Sat 8am to 12pm **Sep 6 to 13** Admin Svcs Ctr B-480

18724 Sat 8am to 12pm **Oct 18 to 25** Admin Svcs Ctr B-480

Corporate Communications. / \$ 200 / 24 hrs / 2.4 CEUs

This course will focus on three aspects of corporate communication: grammar, professional writing, and presentations. **No class Nov 29.**

Course **CWT 402.** Equivalent to WECM course POFT 1012.

18725 Mon Wed 530 to 830pm **Oct 6 to 29** Admin Svcs Ctr B-555

18726 Sat 9am to 1pm **Nov 1 to Dec 13** Admin Svcs Ctr B-555

Note. If not enough students register for a class, it will be canceled. You will be reimbursed within a two week period.

Institute for Customer Service Excellence Southwest Region

The Institute will provide participants the opportunity to test for the Retail Industry Fundamentals Specialist, Customer Service and Sales Certified Specialist, and Business of Retail Certified Specialist through the National Retail Federation Foundation RiseUP.

The Institute can also customize customer service workshops tailored to meet business and industry needs. The following courses are provided by the Institute :

Introduction to Customer Service.

/ \$ 200 / 24 hrs / 2.4 CEUs

This course is designed to provide an introduction to the process of providing excellent customer service. The course will prepare the students to provide excellent customer service in the areas of employment they enter including but not limited to the retail industry. It includes the recognition of the customer base and identification and fulfillment of customer needs.

No class July 5.

Course **CWT 400.** Equivalent to WECM course BUSG 1005.

18727 Tue Thu 530 to 830pm **Oct 14 to Nov 06** Admin Svcs Ctr B-556

18728 Sat 9am to 1pm **Sep 06 to Oct 11** Admin Svcs Ctr B-556

Enhancing Your Customer Service Skills.

/ \$ 75 / 8 hrs / 0.8 CEUs

This course presents the foundation required for developing skills and knowledge to work effectively with internal and external customers. It is designed to help customer service staff to be the best they possibly can be for their organization. At the conclusion, participants will have an understanding of what makes an excellent customer service experience, how to deliver excellent customer service over the telephone, and how to deal with a difficult customer. This course can be customized to business and industry needs.

Course **CWT 401**. Equivalent to WECM course BUSG 1005.

18729 Mon Wed 530 to 730pm **Dec 1 to 10** Admin Svcs Ctr B-556

18729 Sat 9am to 1pm **Oct 18 to 25** Admin Svcs Ctr B-556

Automotive Technology

Auto Mechanics / Non-Mechanics.

/ \$ 170 / 20 hrs / 2.0 CEUs

Learn basic automotive technical skills. These skills will assist you in identifying mechanical problems, making minor repairs, and doing preventive maintenance such as changing oil and transmission filters.

Course **CWT 101**. Equivalent to WECM course AUMT 1091.

18730 Sat 1 to 5pm **Aug 30 to Sep 27** Valle Verde TTC-159

Fundamentals of Brake Systems.

/ \$ 170 / 20 hrs / 2.0 CEUs

This course introduces the basics of brake systems including topics on the diagnosis, anti-lock brake systems, and parking brakes. These concepts are taught through a series of class discussions and hands-on applications.

Course **CWT 102**. Equivalent to WECM course DEMR 1015.

18731 Sat 1 to 5pm **Oct 4 to Nov 1** Valle Verde TTC-159

Motorcycle Repair. / \$ 135 / 20 hrs / 2.0 CEUs

Participants will learn how to properly service, repair and maintain motorcycles. This study of the components will include shocks, tires, wheels, drive chains, cables, clutches, valve adjustments, timing chain service, fuel systems service, and ignition system testing. Emphasis will be placed on individual projects. Students are responsible for purchasing any required parts for their motorcycle. If you have any questions, please call 915 831-7756.

No class Nov 29.

Course **CWT 100**. Equivalent to WECM course MRTC 1091.

18732 Sat 1 to 5pm **Nov 8 to Dec 13** Valle Verde TTC-159

Note. If not enough students register for a class, it will be canceled. You will be reimbursed within a two week period.

Auto Collision and Repair

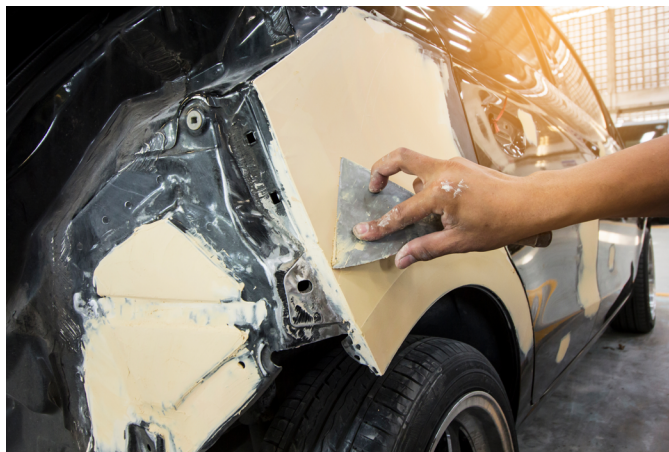
The Auto Collision and Repair Program will prepare you with the basic technical knowledge and skills for the auto collision and repair industry. You will receive hands-on training from instructors credentialed by I-CAR.

Shop Safety and Procedures. / \$ 175 / 20 hrs / 2.0 CEUs

Participants will learn the basic knowledge of shop safety, shop tools, test equipment, and service tools. Instruction will occur in both a classroom and a field-laboratory setting.

Course **CWT 112**. Equivalent to WECM course DEMR 1000.

18733 Mon to Thu 530 to 930pm **Sep 8 to 15** Valle Verde TTC



Basic Metal Repair.

/ \$ 263 / 30 hrs / 3.0 CEUs

This course is an introduction to basic current metal work techniques, product application, and skill development utilizing various auto body features including metal principles. The student will perform basic metal straightening procedures, utilize basic body-shop hand tools, and utilize appropriate plastic filler application techniques.

Course **CWT 113**. Equivalent to WECM course ABDR 1091.

18734 Mon to Thu 530 to 930pm **Sep 16 to 29** Valle Verde TTC-159

18735 Sat 8am to noon **Aug 30 to Oct 18** Valle Verde TTC-159

Basic Refinishing.

/ \$ 263 / 30 hrs / 3.0 CEUs

This course is an introduction to current refinishing products, shop safety, and equipment used in the automotive refinishing industry. Emphasis on surface preparation, masking techniques, and refinishing of replacement parts.

Course **CWT 114**. Equivalent to WECM course ABDR 1091.

18736 Mon to Thu 530 to 930pm **Aug 30 to Oct 13** Valle Verde TTC

18737 Sat 1 to 5pm **Oct 25 to Dec 20** Valle Verde TTC

■ ■ Vehicle Trim and Hardware.

/ \$ 175 / 20 hrs / 2.0 CEUs

This course will instruct the student in the proper use and selection of tools, removing and installing interior door trim panels, and removing and installing door locks and handles. How to properly remove and install deck lid lock cylinders, install pinstripes and decals, and remove and install exterior trim.

Course **CWT 115**.

18738 Mon to Thu 530 to 930pm **Oct 14 to 21** Valle Verde TTC

■ Auto Body Repair and Repainting.

/ \$ 175 / 20 hrs / 2.0 CEUs

This course introduces the use of hand and power tools, metalworking techniques, body preparation, plastic fillers, fiberglass, SMC repair, sanding, and application of primers, emphasizing shop safety practices.

Course **CWT 116**.

18739 Mon to Thu 530 to 930pm **Oct 22 to 29** Valle Verde TTC-159

Vehicle Design and Structural Analysis.

/ \$ 175 / 20 hrs / 2.0 CEUs

This course is an introduction to the collision repair industry, and emphasizes safety, professionalism, and vehicle structural design. It explains the methods to determine collision damages to an automotive chassis and suspension components for conventional framed and unitized vehicles.

Course **CWT 117.**

18740 Mon to Thu 530 to 930pm **Oct 30 to Nov 6** Valle Verde TTC

Automotive Plastic and Sheet Molding Compound Repair.

/ \$ 175 / 20 hrs / 2.0 CEUs

This is a comprehensive course in the repair of interior and exterior plastics, including various types of plastic welding and adhesives. Instruction will occur in a classroom and field-laboratory setting. **No class on Nov 11.**

Course **CWT 118.**

18741 Mon to Thu 530 to 930pm **Nov 10 to 18** Valle Verde TTC

Note. If not enough students register for a class, it will be canceled. You will be reimbursed within a two week period.

Electrical Technology

Conc indicates a concurrent course open to both degree-plan and CE students. It is limited to age 17 or older. See page 53.

Facility Operations and Maintenance I.

/ \$ 459 / 96 hrs / 9.6 CEUs

Provides the management of the interaction among facility, people, equipment, air conditioning, furniture, grounds, and waste management.

Course **CCW 308.** Equivalent to WECM course ENTC 2414.

Conc 19641 Mon Wed Fri 8 to 950am **Oct 20 to Dec 12** ATC
Lab Mon Wed Fri 10 to 1150am

Conc 19642 Mon Wed Fri 6 to 750pm **Oct 20 to Dec 12** ATC
Lab Mon Wed Fri 8 to 950pm

Construction Technology

■ Blueprint Reading for Construction.

/ \$ 263 / 30 hrs / 3.0 CEUs

Provides you with the tools and methodology for interpretation of blueprints in the building-construction industry. Course covers reading, interpretation, and application of symbols, graphic language, and terminology used in the construction industry by building trades.

Course **CWT 501.**

18742 Mon Wed 6 to 9pm **Sep 8 to Oct 8** Admin Svcs Ctr B-585

Construction Cost Estimating.

/ \$ 263 / 20 hrs / 2.0 CEUs

This introductory course presents an overview of cost estimating for building construction, and reviews pre-bid procedures, material surveys, pricing, and bid closeout.

Course **CWT 502.**

18743 Mon Wed 6 to 9pm **Oct 13 to Nov 12** Admin Svcs Ctr B-480

Introduction to Home Electrical.

/ \$ 155 / 10 hrs / 1.0 CEUs

This course provides a foundational understanding of residential electrical systems. It covers essential topics such as safety, basic electrical theory, common home wiring, troubleshooting, and repairs. The course is designed for homeowners and aspiring electricians who wish to gain practical knowledge and skills.

Course **CWT 313.** Equivalent to WECM course ELPT 1002.

18744 Sat 10am to 12pm **Sep 20 to Nov 22** Valle Verde ATC 313

Welding Technology

Welding Art. / \$ 282 / 28 hrs / 2.8 CEUs

Learn the fundamentals of producing utilitarian and ornamental items using various metals. Use welding techniques to create metal pieces with sheet or stock materials, employing various welding and cutting processes. **Students pay for their own art materials.**

Course **CWT 200.**

18745 Sat 1 to 5pm **Oct 4 to Nov 15** Valle Verde ATC-121

Logistics

New / CLT : Certified Logistics Technician.

/ \$ 1,161 / 80 hrs / 8.0 CEUs / Hybrid

The purpose of the CLT® Certified Logistics Technician certification program is to recognize, through certification, individuals who demonstrate mastery of the core competencies of material handling at the front-line (entry-level to front-line supervisor) through successful completion of the certification assessments. The goal of the CLT certification program is to raise the level of performance of logistics technicians both to assist individuals in finding higher-wage jobs and to help employers ensure their workforce increases the company's productivity and competitiveness.

Course **CWT 710.**

19043 Mon to Thu 530 to 830pm **Sep 8 to Oct 22** Online

EPCC is designated as a military-friendly MSSC-Authorized Assessment Center and may administer the following MSSC assessments: CPT® Certified Production Technician assessment consisting of five modules:

- 1 Safety;
- 2 Quality Practices and Measurement;
- 3 Manufacturing Processes and Production;
- 4 Maintenance Awareness; and
- 5 Green Production -- a voluntary module.

In addition, MSSC maintains the Foundational-level CLA® Certification Logistics Associate, the Mid-level CLT® Certified Logistics Technician, and the CFT® Certified Forklift Technician assessments.

Contact Jose CassoLopez at 915 **831-7756** or jcassolo@epcc.edu for more information.



For information about any program, please call (915)831-7840



The Texas Workforce Commission has funding available for businesses and employers with apprenticeship programs. The funds help pay for training. Partner with El Paso Community College for a great opportunity to access those funds.

Call us or visit <https://www.twc.texas.gov/programs/apprenticeship>

.....

Customized training through state-funded SDF grants ensures your workforce receives training to upskill and gain proficiency in industry skill standards. The Skills Development Fund awards a grant up to \$500,000 per business. The target average cost per full-time employees is \$2,000.



Call us or visit <https://www.twc.texas.gov/partners/skills-development fund>

.....



Businesses with fewer than 100 employees can register full-time employees at El Paso Community College. Skills for Small Business Program pays tuition and fees up to \$1,000 for each existing employee and up to \$2,000 for each new employee per 12-month period.

Call us or visit <https://www.twc.texas.gov/programs/skills-small-business>

RISK MANAGEMENT INSTITUTE

Get Trained in Safety Today!



The Institute makes the training not only effective but also highly convenient by designing customized training based on the employer's specific needs for locations, schedules, languages, and topics.



These courses range from courses, such as **OSHA 10 or 30 Hour for Construction or General Industry**, to specific topics such as:

- OSHA Record-keeping
 - Accident Investigation Procedures
 - Back Injury Prevention
 - Blood-borne Pathogens Training
 - Confined Spaces
 - Electrocution Hazard Recognition
 - Fall Prevention
 - Forklift Safety Training
 - Hazardous Materials
 - LOTO (Lockout Tagout Procedures)
 - Machine Guarding
 - Personal Protective Equipment (PPE)
 - Trenching and Excavation
 - Struck by or Caught in Between
- And many more!

**Workplace Safety Training
Courses
on the Topics You Need.**

For more information, please visit our website at:

[epcc.edu/Academics/ContinuingEducation/
RiskManagementInstitute](http://epcc.edu/Academics/ContinuingEducation/RiskManagementInstitute)



or contact Cecy Maurer at (915) 831-7130

**REGISTER TODAY!
SEATS ARE LIMITED.**

Courses are one to 30 hours in duration and are offered in English or Spanish. Continuing Education Units (CEUs) and certificates will be awarded upon successful completion of each course.

JER Online

Workforce Certificates & Courses

CENTER FOR CORPORATE AND WORKFORCE TRAINING

The Center for Corporate and Workforce Training (CCWT) is happy to announce our new partnership with JER Online which provides 100% online and instructor-led certificate courses. Some are certificate courses. Please see list below:

- Industrial Foundation Training Series
- Distribution and Warehousing Training Series
- Certificate in Logistics, Supply Chain, and Purchasing Management
- Lean Manufacturing Personal Training Library
- Manufacturing Statistics Personal Training Library
- Lean Six Sigma Black Belt Course Library
- Lean Six Sigma Green Belt Course Library, Manufacturing Version
- Lean Six Sigma Green Belt Course Library, Transactional Version
- Lean Six Sigma Yellow Belt Course Library, Manufacturing Version
- Electrical Foundations Training Series
- Industrial Electricity and Electronics Training Series
- Customer Service Learning Bundle
- Principles of Home Inspection: System & Standards, 100 Professional
- Introduction Coronaviruses, COVID-19, and Emerging Respiratory Viruses (**Free Course**)

For more information, please click the following link coursecatalog.com/epcc to provide you with a more

extensive list of offerings.



In addition to the courses above, JER Online provides the *TechWriter-Certifications*. Technical Communication is a demand occupation that has tremendous potential in any area. As a "**Demand Occupation**" this means more training opportunities are needed to meet business and industry customer requirements. Technical Communicators are everywhere looking for high quality, Certificate-Based Training, and jobs. Some of the available courses are listed below:

- Basic Certificate in Technical Writing
- Certificate in Technical Writing for Current Technical Writers
- Technical Writing & Communication Industry Certificate - Mastery Level
- Advanced Certificate Course in Structured Writing for Technical Documentation
- Certificate in Professional Technical Communication (Portfolio)
- Writers at Work Technical Certificate Program
- Certificate Course in Writing for a Global Market
- Technical Communication Techniques & Principles for Project Managers
- Workplace Experience Certificate (Not a course: Prior Learning Assessment Service)
- Comprehensive Career Builder Certificate in Technical Writing
- Certificate Course in Technical Business Writing for Engineers

For more information, please click the link below techwriter.coursecatalog.com/epcc

General Information

Call 915 **831-7721** for general information or questions.

Registration and payment

Current EPCC students can

- 1 **register online** for most courses. Go to epcc.edu/admissions/ registration to plan, register, and pay for your classes, or meet online with an admissions counselor at epcc.edu/admissions. Click on Get Connected.
- 2 **email the registration form** on page 53 to admissions@epcc.edu, or
- 3 **register in person** at any campus Admissions Office. (It's best to keep your records current by filling out a form for each class.)

New students, or those without a username or id, should

- 1 **fill out the form** on page 53, or
- 2 **email the registration form** on page 53 to admissions@epcc.edu

You must pay in full when you register. (It's best to register and pay two weeks before classes start.) You can pay with cash, check, money order, debit card, or the credit cards Visa, Mastercard, American Express, and Discover. **Do not send cash** through the mail. Make checks or money orders payable to EPCC.

Go to epcc.edu/academics/continuingeducation for more general information about registration, or call 915 **831-7721**.

Refunds

Under EPCC's refund policy, you'll get

- 1 **a 100 percent refund** if your class is canceled.
- 2 **a 100 percent refund** if you formally drop before the **first** class
- 3 **an 80 percent refund** if you formally drop before the **third** class
- 4 **No refund** if you formally drop **after the third class**

We mail refund checks to the address we have on file.

Make sure it's your current address.

Dropping a course

To drop, fill out the student add-drop form on page 54. Before classes start, take it to any campus admissions-registrars office, or the appropriate CE director's office. (See a list of directors on page 52). No refunds will be given after the third day of classes.

Parking on campus

If you're enrolled in Workforce and Continuing Education courses for less than 60 hours, you can get a free temporary parking pass. (Take your Registration Statement to any EPCC vehicle registration office.)

If you're enrolled in 61 hours of courses or more, you must register your vehicle and buy a parking decal. Go to epcc.edu/services/police/vehicle-registration for more information about parking on campus -- or call 915 **831-2867** or **2212**.

Senior Adult Program

El Paso Community College offers seniors 55 years and older a variety of free classes in its Senior Adult Program. Check the Senior Adult Program area of this catalog for dates and locations of our free classes.

Prove you're old enough to take classes by showing your driver's license, birth certificate, or any legal document bearing your age.

Note. EPCC parking policies apply to all students on every campus.

Note. You must purchase any needed books or supplies.

Note. Seniors who register for courses outside the Senior Adult Program must pay all tuition and fees that apply to the course.

Bacterial meningitis vaccine requirement

If you're under 22 and in a non-credit course or program with more than 360 contact hours, you must have a vaccination for meningitis 10 days before classes begin. Proof of immunization must be presented when registering for the course or program.

Financial assistance

Tuition assistance may be available for students enrolled in continuing education career training certificate programs through the Texas Public Education Grant (TPEG). To apply, you must complete the Free Application for Federal Student Aid (Fafsa) at epcc.edu/admissions/financialaid and contact the Director for the program to complete a TPEG application. It is recommended that you submit the Fafsa and TPEG applications eight weeks before registering for classes. Call 915 **831-7721** for assistance.

Records, directory information, and Ferpa, the Family Educational Rights and Privacy Act of 1974

To comply with the Family Educational Rights and Privacy Act, El Paso County Community College District gives notice that the following types of directory information will be released to the general public without the written consent of the student :

- 1 Student's name
- 2 Student's address
- 3 Telephone listing
- 4 Dates of attendance
- 5 Major field of study, and awards and degrees received
- 6 Most recent previous institution attended
- 7 Date of birth

Currently-enrolled students may request that all or part of their directory information be withheld from the public by filing a written request at the Admissions and Registration Office. Such a request will remain in effect until the student authorizes its removal in writing. Release of any additional information pertaining to student records must be authorized, in writing, by the student, except as authorized under the law. Students have a right to inspect, review, request copies of, and challenge the contents of their educational records. A fee will be charged for copies provided.

Frequently asked questions

How and where do I register for a course ?

Registrations are processed on a first-come, first-served basis. You can register in person at any campus, or online with an admissions assistant at epcc.edu/admissions. Click on the Get Connected button.

You'll need a filled-out Continuing Education registration form. Find one on the web at epcc.edu/academics/continuingeducation -- or at the back of this catalog.

You may also email the form to admissions@epcc.edu. Online registration is available for returning students for some courses. For more information, call 915 **831-7721**, or call Admissions at 915 **831-2150**.

Are there any entrance requirements ?

The minimum age for adult continuing education courses is 17 years of age unless otherwise noted. Further information about ages and other prerequisites can be found in the individual course listing, or with the Continuing Education Director. It is your responsibility to ensure that all course requirements and prerequisites are met. You won't be allowed to remain in a course if its prerequisites and requirements are not satisfied.

What if my class is canceled ?

In the event of a cancellation or change in schedule, we'll contact each student at their phone numbers on file. Whenever possible, the decision to cancel a course will take place 48 hours before it starts. Students get a full 100 percent refund for canceled classes. Students can also ask for a transfer to another section, if available.

What is a concurrent course ?

Concurrent courses are credit courses open to both degree-seeking and CE students. Degree-plan students earn college credit, while CE students earn continuing-education units. These units can later be turned into college credit under certain conditions. (In class listings, **Conc** before a section number means that section is concurrent.) For more information, call 915 **831-7721**.

Continuing Education Transcripts and Certificates of Completion

Transcripts may be requested at any EPCC campus admissions office or by US mail. For more information, call 915 **831-2282**. Certificates of Completion should be requested through the director's office from which they were issued. There may be a fee for issuing duplicate certificates.

EPCC In-Person Registration Locations

Go to epcc.edu/contact/maps for **maps of these campuses**.

Valle Verde campus / Monday to Friday 8am to 5pm
915 **831-2150** / 919 Hunter Dr, Enrollment Services Center, Bldg **E**

Rio Grande campus / Monday to Friday 8am to 5pm
915 **831-4035** / 100 West Rio Grande Ave, Student Services Ctr, Room **D-101**

Transmountain campus / Monday to Friday 8am to 5pm
915 **831-5030** / 9570 Gateway North, Room **1051**

Mission Del Paso campus / Monday to Friday 8am to 5pm
915 **831-7017** / 10700 Gateway East, Room **A-123**

Northwest campus / Monday to Friday 8am to 5pm
915 **831-8830** / 6701 South Desert Blvd, Main Bldg, Room **M-73**

Fort Bliss campus / Monday to Friday 730am to 430pm
Closes for lunch from 1 to 2pm
915 **831-5511** / 641 Taylor Rd, **RM-10**



EPCC Central Offices

Administrative Services Center ASC
915 **831-3722** / 9050 Viscount Blvd 79925

CONTRACT OPPORTUNITIES CENTER APEX ACCELERATOR

In 1986, the US Department of Defense, through the Defense Logistics Agency (DLA), awarded a Cooperative Agreement to El Paso Community College to operate the Contract Opportunities Center Apex Accelerator (COC).

In October 2022, the program transferred from DLA to the Office of Small Business Programs (OSBP) with the new mission to serve as the axis for existing and new businesses to strengthen the defense industrial base by accelerating innovation, fostering ingenuity, and establishing resilient and diverse supply chains.

Small businesses have been an integral part of America's economic growth and development. Thus, to ensure continued growth, we must focus on this uniquely American phenomenon and maintain a productive and educated workforce that contributes to the overall success of all businesses in the El Paso and Hudspeth area.

The COC provides specialized and professional assistance to businesses in the El Paso and Hudspeth area who seek to learn how to compete for contracting and subcontracting opportunities with DOD, other federal agencies, state and local governments, educational institutions, and prime contractors to promote business development.

The COC is committed to assisting and motivating businesses - with emphasis on small, disadvantaged, minority, women-owned, veteran-owned, and HUBZone certified - toward market expansion and job creation through active pursuit of government contracting.

Services Provided Include:

Technical Support: Includes bid preparation assistance, pre-award technical assistance and post-award assistance.

Counseling Support: Includes client needs assessment, new client program orientation, guidance and assistance with SAM and DSBS registration, bid analysis, proposal preparation and submission, use of electronic data information.

Outreach Support: Includes conferences, networking, seminars/workshops, on-site visits and technical training.

Bid Matching Support: Customized bid matching services. Annual fee **\$50**.

Marketing Support: Includes research, strategies in accessing federal, state and municipal markets and various electronic registrations.

Reference Support: Includes Federal Acquisition Regulations, Texas State Procurement Information, Municipal purchasing Systems, Procurement Automated Source Systems, Reference Library and Government and Military Specifications.

Training & Resources: Information and training seminars and workshops are offered throughout the year which assist businesses to increase their knowledge and enhance their skills in business management, operations, and specialized areas related to purchasing, procurement and contracting. Counseling and technical assistance is provided free of charge. Seminars and workshops will occasionally require a registration fee.



9050 Viscount Blvd. Bldg. B. Room B545
El Paso, Texas 79925
(915) 831-7745
www.elpasococ-events.org





HIGH SCHOOL EQUIVALENCY TESTING CENTER

9050 Viscount Blvd. ~ Bldg. B, Rm. 156 ~ El Paso, Texas 79925

Ph. 915-831-7818 ~ Fax 915-831-7819

www.epcc.edu/testing-services

Monday—Friday 8:00 am-5:00pm

Assistance with registration | Flexible testing dates and times | Safe and secure testing environment | Certificate printed on parchment paper | College and career information



GED.COM

877-392-6433

FOUR CONTENT AREAS

- Reasoning Through Language Arts
- Mathematical Reasoning
- Science
- Social Studies

TESTING FEES

\$145 Battery

\$36.25 Individual Test

\$16.25 Retests*

* After the first 3 attempts, 60 day wait period required between retakes

PASSING SCORE: 145-200 on each test. Scores are available within 3 hours of testing.

GED® College: Applicants who score **165-174** can qualify for waivers from applicable placement testing.

GED® College + Credit: Applicants who score **175-200** have demonstrated skills that could qualify them for college credit.

TEA will email your State of Texas Certificate Of High School Equivalency to the email address used to register for the exams three business days after the final test.

Computer-based tests are offered in English and Spanish

ELIGIBILITY REQUIREMENTS

Applicants must **provide valid proof of identity and Texas residency** before being permitted to take any of the tests. Identification must be issued by a government entity and contain the following: applicant's name, date of birth, a recent photograph, signature and Texas address.

Examples of Acceptable Identification: Texas Driver's License, Texas Department of Public Safety ID, US Military ID, Mexican Consulate ID, Passports* (national or foreign), Out-of-State Driver's License*

***Texas Residency:** Texas voter registration card, lease agreement, utility bill, property tax receipt, or federal income tax return. Documents must be current and show the applicant's name and Texas address.

AGE REQUIREMENTS

Testing is available for Texas residents 18 and older; 16 and 17 year olds must submit additional documentation to the Testing Center or the Texas Education Agency (TEA) electronically. Upon verification of all required forms, TEA will notify testing applicant when they can continue with the registration process and schedule their exams.

TEST ACCOMMODATIONS

Special test accommodations are available for applicants with disabilities. Applicants must submit necessary forms, and be approved before they can test with accommodations.



ESL BRIDGE

We are the **bridge to ESOL**
for ESL learners transitioning into academic courses.



English GED – Preparation courses

In person classes or Online. Tuition under \$40. Call to Register!!

Benefits:

- Small class size (18 students/class)
- Online and in-person classes
- Simple Registration process
- College-level experience
- Low cost tuition

We assist with:

- College Readiness
- Reading
- Grammar
- Writing
- Math

Center for College Access and Development
Valle Verde Campus • 919 Hunter Dr., Bldg. B, B264 • El Paso, TX 79915
915.831.3319 • ccad@epcc.edu



El Paso Community College
Continuing Education Registration Form
Admissions@epcc.edu
FAX: (915) 831-2161

STUDENT REGISTRATION FORM (Please print clearly/ Por favor imprima claramente)

Keeping your information current with EPCC is important. This will help us contact you in case of cancelled classes, schedule changes, or any other reason. Student refunds will be sent to the address on file./Es importante mantener su información actualizada con EPCC. Esto nos ayuda a informarle si sus clases se han cancelado, si hay cambios en su horario de clases o por cualquier otro motivo. Re-embolsos se enviarán en dos semanas a la dirección proporcionada.

SSN or EPCC ID: _____ Date of Birth(Mo/Day/Year)/Fecha de Nacimiento(mes/día/año): ____/____/____

Legal Name/Nombre Legal: _____
Last Name/Apellido First Name/Primer Nombre Middle Initial/Inicial De Segundo Nombre

Mailing Address/Domicilio: _____
Street/Domicilio City/Ciudad State/Estado Zip Code/Código Postal

Phone/Telefono: _____
Cell/Celular Work/De Trabajo Home/En Casa

Email/Correo Electrónico: _____ Gender/Sexo: ☐ (F) ☐ (M)

Emergency Contact Person/Persona Para Avisar En Caso De Emergencia: _____
Name/Nombre Phone/Teléfono

For disability accommodations, please contact Center for Students with Disabilities at/Para asistencia por cuestión de discapacidad, por favor llame al Centro Para Estudiantes con Discapacidades **(915) 831-2426**.

Request EPCC to release your directory information?/Desea que EPCC comparta su información? Yes/Si ☐ No ☐

Ethnicity/Etnicidad(optional) ☐ White(Non Hispanic)/Blanco(No Hispano) ☐ Hispanic/Hispano
☐ Asian/Pacific Islander/Asiático/Isas del Pacifico ☐ Black(Non Hispanic)/Afro-Americano (No Hispano)
☐ American Indian/Alaskan Native/Indio Americano/Nativo De Alaska ☐ Other/Otra Nacionalidad

Are you a U.S. citizen? (Yes/Si) ☐ (No) ☐
Es usted ciudadano americano?

Are you Permanent Resident? (Y/Si) ☐ (No) ☐
Es usted residente permanente?

Student Signature/Firma del Estudiante: _____ Date/Fecha: _____

Example/Ejemplo:

27870 MGT 811 Introduction to Business Basics VV 1/22/13-3/12/13 Tues 6pm-9pm

| CRN | Course Number/Clase Número | Course Title/Título Del Curso | Campus | Dates/Fechas | Days/Días | Time/Horario |
|-------|----------------------------|---------------------------------|--------|-----------------|-----------|--------------|
| 27870 | MGT 811 | Introduction to Business Basics | VV | 1/22/13-3/12/13 | T | 6 – 9 pm |

| CRN | Course Number/Clase Número | Course Title/Título Del Curso | Campus | Dates/Fechas | Days/Días | Time/Horario |
|-----|----------------------------|-------------------------------|--------|--------------|-----------|--------------|
| | | | | | | |
| | | | | | | |
| | | | | | | |
| | | | | | | |

Registration must be received at least one week prior to the start of the class. Completed forms should be either emailed to: **Admissions@epcc.edu** or faxed to: **(915) 831-2161**. Please remember to sign the form.

La inscripción debe recibirse al menos una semana antes del comienzo de la clase. Los formularios completos deben enviarse por correo electrónico a: **Admissions@epcc.edu** o por fax a: **(915) 831-2161**. Recuerde firmar el formulario.

Once you have been registered for your classes you will receive an email with your student ID number and PIN, and confirming that you have been registered for continuing education classes. At that time you must pay for your classes online at the link included below. Classes will be dropped if payment has not been made within two business days of registration. If you have any questions regarding payment please call Tuitions/Cashiering Services at (915) 831-2107 or (915) 831-2569

Cuando se haya registrado para sus clases, recibirá un correo electrónico con su número de identificación de estudiante y PIN, y confirmará que se ha registrado para las clases de educación continua. En ese momento, debe pagar sus clases en línea en el enlace que se incluye a continuación. Las clases se cancelarán si el pago no se ha realizado dos días después de su inscripción. Si tiene alguna pregunta sobre el pago, llame a los servicios de matrícula/cajero al (915) 831-2107 o al (915) 831-2569.

https://secure.touchnet.com/C20715_tsa/web/login.jsp

Processed by: _____ Date: _____



EL PASO COMMUNITY COLLEGE
Admissions and Registrar's Office
Admissions@epcc.edu
Fax (915)831-2161
CONTINUING EDUCATION
STUDENT ADD/DROP FORM

Keeping your information **CURRENT** with EPCC is important. It helps us inform you if classes have been cancelled, if there are changes to your schedule, or if we need to contact you for any reason. Your information is kept confidential. If student is due any refunds, EPCC will send to the address on file.

EPCC ID: _____ DATE OF BIRTH (Mo/Day/Year): ____/____/____

LAST NAME: _____ (FIRST NAME): _____ (Middle Initial): _____

STUDENT SIGNATURE: _____ DATE: _____

| ADD | CRN (SECCION) | COURSE & NUMBER (CURSO Y NUMERO) | COURSE TITLE (TITULO DEL CURSO) | START/END DATE (COMIENZO/FINAL DEL CURSO) |
|-----|------------------|-------------------------------------|------------------------------------|--|
| | | | | |
| | | | | |

| DROP | CRN (SECCION) | COURSE & NUMBER (CURSO Y NUMERO) | COURSE TITLE (TITULO DEL CURSO) | START/END DATE (COMIENZO/FINAL DEL CURSO) |
|------|------------------|-------------------------------------|------------------------------------|--|
| | | | | |
| | | | | |

Processed by: _____

Date: _____

Revised 02/07/2022



Communication Improvement in the Workplace



Are you a second language learner seeking to improve your English for better workplace communication?

This course is for you!

- ✓ 8-week courses
- ✓ Evening hours: 5:30 pm to 7:30 pm
- ✓ TUESDAYS – WEDNESDAYS – THURSDAYS (IN PERSON CLASSES)
- ✓ Tuition \$50

Questions? Contact us!

Center for College Access and Development

Monday - Friday 8:00 am to 5:00 pm

(915) 831-3319 – (915)831-3321

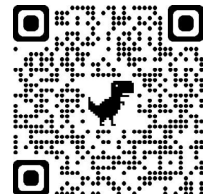




**El Paso Community College is an official
Pearson Vue Testing Center
Information Technology (IT) and
Professional Licensure Certification Exams**

- *America College of Sports Medicine (ACSM)**
- *Board of Certified Safety Professionals (BCSP)**
- *C+ Institute**
- *Cisco systems**
- *Commission on Dietetic Registration (CDR)**
- *CompTia**
- *Microsoft**
- *National Strength and Conditioning Association (NSCA)**
- *Pharmacy Technician Certification Board Texas Texas (PTCB)**
- *Texas Educator Certification**
- *Texas Real Estate**
- *Texas Insurance**
- *U.S. Secret Service**
- *And Many More...**

**Register at
www.pearsonvue.com**





GALLERY OF FINE ARTS

**OPEN THIS FALL
9AM-4PM
MON-FRI**

EXHIBITIONS CURATED TO CELEBRATE
OUR STUDENTS, FACULTY, AND LOCAL
ARTISTS. COME IN AND EXPERIENCE
ART IN OUR COMMUNITY.

FOLLOW US ON INSTAGRAM TO KEEP UP
TO DATE WITH OUR LATEST EXHIBITS:

@epcc_art



LVN CERTIFICATE CHOOSE THE TRACK THAT FITS YOU

Daytime, Evening, and Weekend Classes

Begin the journey of a lifetime with our LVN Certificate of Completion. Classes are available in the evening, on weekends, and in a traditional daytime setting. As a Licensed Vocational Nurse, you join a career field that has unlimited growth potential. Work in schools, hospitals, clinics, and in-home healthcare. Continue your path with our LVN to RN associate's degree!



Traditional Daytime Track:
12 Months

Evening/Weekend Track:
18 Months

Pre-requisites and Placement
Testing Required

Contact A Counselor:
Vee Leavitt,
vleavitt@epcc.edu
(915)831-7067

**Kickstart Your
Career in
Healthcare!**

**Complete Your
Certificate within
5 Semesters**

Flexible Scheduling

**Stay at EPCC &
Transition to an RN!**

NURSING DIVISION - MDP

10700 Gateway East,
79927
(915)831-7094 ext.7142

EPCC.EDU/Nursing

M-F 8 AM – 5 PM

The EPCCCD does not discriminate on the basis of race, color, national origin, religion, sex, age, disability or veteran status.

YOUR HEALTH CAREER STARTS HERE



epcc.edu/Academics/Health





PREP

PREP offers support and useful resources to help students be ready for college-level courses. PREP services provide reviews in math and English skills to prepare you to take or retake the TSIA2.



What is the TSIA2?

The TSIA2 is a state-mandated placement test for students entering Texas public college and universities. It determines a student's readiness for college-level coursework in reading, writing and math. Your TSIA2 test results will show what subjects you've mastered and what areas need improvement. PREP is here to help, resources are FREE!

The TSIA2 is not a pass/fail test, but the results are used to guide academic advising and course selection.

Need help with the TSIA2? PREP offers resources to help you succeed.



DIAGNOSTIC ASSESSMENTS

Our diagnostic assessments are designed to pinpoint the specific content areas where you may need additional review. Once identified, our online courseware can be tailored with customized modules.



TSIA2 AND TEAS BOOT CAMPS

PREP offers Boot Camps for students who have previously taken the TSI and want to improve their scores. Led by EPCC faculty, these sessions are free, interactive, and engaging.



ONLINE COURSEWARE

PREP uses computer-based modules. These modules are online, self-paced and customizable to meet your learning needs.



PREP LAB

The PREP Lab is available to all EPCC students, faculty, and staff. The lab offers access to computers and printing services to support your academic needs, including course registration.

**Visit one of our
PREP offices, or call
us, we can help.**

Mission del Paso Campus

E-108 / (915) 831-7132

Rio Grande Campus

A-250 / (915) 831-4147

Northwest Campus

M-68D / (915) 831-8893

Transmountain Campus

LRC 1606 / (915) 831-5101

Valle Verde Campus

S-147 / (915) 831-2325



Connect with us online at:
www.epcc.edu/Services/PREP

The EPCCCD does not discriminate on the basis of race, color, national origin, religion, sex, age, disability or veteran status.

Why Wait 16 Weeks? Get It Done in 8!

OPEN NOW!

**Ditch the wait and double the progress!
Our 8-week hybrid classes are designed for busy students who want:**

- **Faster Graduation**
- **Flexible Learning (in-person + online)**
- **Better Focus with Higher Success**
- **More Chances to Retake if Needed (without losing momentum)**

**8-WEEK HYBRID
CLASSES
MISSION DEL PASO
CAMPUS**

SCAN HERE



AVP Workforce & Continuing Education



Office

| | |
|--|--|
| Blayne Primozich, Associate Vice-President <i>Workforce and Continuing Education</i> <ul style="list-style-type: none"> ▪ Jessica Diaz, Senior Administrative Associate <i>Senior Adult Program</i> <ul style="list-style-type: none"> ▪ Nicole Gonzales, Administrative Associate | 831-7724 831-7795 831-7721 831-7801 |
| Daniel Guerra, Dean VV <i>Language Institute</i> <ul style="list-style-type: none"> ▪ Lucina (Lucy) Flores, Manager Language Institute | 831-2857 831-2154 |
| Susana Rodarte, Dean VV <i>Center for College Access and Development</i> <ul style="list-style-type: none"> ▪ Maria del Carmen Casavantes, Director Workplace Literacy | 831-2868 831-3310 |
| Pablo Armendariz, Director - ASC B <i>Contract Opportunities Center</i> <ul style="list-style-type: none"> ▪ Alicia Salcedo, Administrative Associate | 831-7747 831-7751 |
| Barry Bogle, Director - MDP <i>Law Enforcement Training Academy</i> <ul style="list-style-type: none"> ▪ Maria Jimenez, Administrative Associate | 831-7116 831-7117 |
| Jose CassoLopez, Director - ASC B <i>Center for Corporate & Workforce Training</i> <ul style="list-style-type: none"> ▪ Nancy Reyes, Administrative Associate <i>Risk Management Institute – ASC B</i> <ul style="list-style-type: none"> ▪ Gloria C. (Cecy) Maurer, Coordinator | 831-7756 831-7824 831-7130 |
| Audrey A. Marrufo, Director - ASC B <i>Small Business Development Center</i> <ul style="list-style-type: none"> ▪ Norma Curiel, Administrative Assistant | 831-7733 831-7742 |
| Leticia Guerra, Director - ASC B <i>CE, Business & Tech. Education, Personal Enrichment and Children's College</i> <ul style="list-style-type: none"> ▪ Marisela Lerma, Administrative Office Assistant | 831-6695 831-6682 |
| Cheryl Stiles, Director - ASC B <i>CE Health -</i> <ul style="list-style-type: none"> ▪ Elva Santacruz, Administrative Associate | 831-7808 831-7831 |



P.O. Box 20500
El Paso, Texas 79998-0500

***** ECRWSS *****
Residential Customer, El Paso, Texas

Non-Profit
Organization
US Postage
PAID
El Paso, TX
Permit No. 2121



Parent Resource Centers at all 5 campuses

Lactation
Rooms and
Pods

Engaging
Playtime and
Storytelling

Infant and
Toddler Play
Areas



Our Mission

Creating a family-friendly environment where student parents can study, learn, grow and reach their goals while creating a two generational approach by setting a positive example for their children

Our Services

We offer a safe and convenient space for parents and their children. Visit our website to find locations at all five campuses and hours of operation



CONTACT US

epcc.edu/Services/family-friendly-campus-services

Parent Resource Centers Locations

| EPCC Locations | Room # | Telephone |
|-------------------|--------|----------------|
| •Mission del Paso | C123 | (915) 831-7168 |
| •Northwest | L100 | (915) 831-8883 |
| •Rio Grande | E116 | (915) 831-4424 |
| •Transmountain | 1700 | (915) 831-5044 |
| •Valle Verde | A2415 | (915) 831-3246 |



Smart Access technology, the primary way to unlock a pod is with the free Mamava app or code on they keypad.

Lactation Pod Locations!!

Administrative Services Center (ASC):

Building B, Bottom floor, next to sitting area, in front of elevators, next to the stairs.

Mission del Paso Campus:

Immediately to the left of the entrance to Building D.

Northwest Campus:

NW Campus Library, right outside of the NW Student Parent Resource Center Room NW L117

Rio Grande Campus:

The southeast corner of the cafeteria. There is an accessibility ramp to the right of the staircase. The Pod will be close to the Tejano Mercado.

Valle Verde Campus:

Arts, Science, Technology (AST) Building near the Flexitorium- AST 150, far right against the window (outlet on wall).