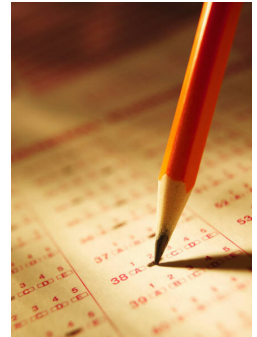




Did you know that you can see your college placement test scores on the EPCC web?

Once you have completed the admissions process and taken your college placement test (the ACCUPLACER or CELSA), you can view your placement test scores and your EPCC course placements.



It's easy!

1. Go to [www.epcc.edu](http://www.epcc.edu) Click on "Online Registration" in the Quick Log In box (top left side of page).
2. At the "Online Registration" page, enter your User Identification Number (this is your EPCC student ID number) and your Personal Identification Number (PIN) and login. (First time users enter your Birth date in MMDDYY format as your PIN. Once logged in you can follow the prompts to change your login password for the future.)
3. After you have logged in, click on "Student and Financial Aid".
4. At the "Student and Financial Aid" page, click on "Student Records".
5. At the "Student Records" page, click on "Student Test Scores".

Your college placement test scores and your recommended courses will show. Your test scores are valid for course placement purposes for two years from test date (unless course placement rules change).

If you took your college placement test at your high school, your scores will not be posted until your school district test administrator has officially transmitted your test scores to EPCC and your EPCC admissions application has been processed.

Please Note: New students are required to attend a New Student Orientation prior to registering for classes. All students should consult with their counselor/advisor when in doubt about what courses are best for them to support their selected degree plan.

For more information about placement testing, visit:

[www.epcc.edu/testingservices](http://www.epcc.edu/testingservices) and click on "Placement Testing"

Thanks for choosing



The Best Place to Start  
to Achieve Your Dreams!

